

The logo for Vivala, featuring the word "VIVALA" in a bold, white, sans-serif font. The letters are stylized with rounded, blocky shapes. The background is black with two large, diagonal, overlapping bands of color: a bright pink band on the left and a teal band on the right, meeting at a point in the lower right corner.

WE FINANCE COMPANIES  
THAT CHANGE THE WORLD.

Impact Debt Fund  
**Mexico, Colombia and Central America**

SOCIAL

ENVIRONMENT

INCLUSION

# WHO WE ARE.

---

We are an impact debt fund providing financial solutions to drive the growth of companies that generate positive social and environmental impact, aligned with the

The logo for VIVWALA, consisting of the word "VIVWALA" in a white, bold, sans-serif font. The letters are slightly stylized, with the 'V' and 'A's having a unique shape. The logo is overlaid on a background image of a man in a blue shirt speaking to a group of people sitting on wooden benches outdoors.

VIVWALA

# VIWALA

FOUNDED

2019

30+

YEARS OF TEAM EXPERIENCE

PRESENCE

LATAM

## INVESTORS

We have built strategic partnerships with key institutions, including direct investors and co-investors across various portfolios.

AIMX  
ALIANZA POR LA INICIATIVA DE IMPACTO MEXICO

Member of  
GSGA  
Driving real impact

BAYER

DF IMPACT CAPITAL

DREILINDEN



FONDO MEXICANO  
PARA LA CONSERVACIÓN  
DE LA NATURALEZA, A.C.  
INSTITUCIÓN PRIVADA



GLOBAL FUND FOR  
CORAL REEFS



Healthy Reefs  
for healthy people

CONRAD N.

Hilton

FOUNDATION

INTEGRATED  
CAPITAL  
INVESTING

Social entrepreneurship  
together with

IKEA

MAR  
FUND

NEW  
VENTURES



Nacional Monte de Piedad

kiva



Schweizerische Eidgenossenschaft  
Confédération suisse  
Confederazione Svizzera  
Confederaziun svizra

# INVESTMENT THESIS

## THE GAP IS STRUCTURAL

72%

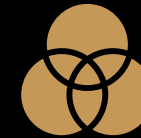
of impact SMEs in LATAM cannot access formal credit.

## THE MISSING MIDDLE IN LATAM



Mid-sized companies are too large for microfinance and too risky for corporate banking.

## BLENDED FINANCE AS AN ADVANTAGE



We combine impact capital with private funding to structure **debt with rates and conditions tailored for mid-sized companies.**

## IMPACT AS A FINANCIAL LEVER



Companies that integrate impact into their operations access better conditions. **Impact is not a cost — it's a discount on your rate.**

## 7-YEAR TRACK RECORD

135  
TRANS-ACTIONS

More than a thesis — proven execution across **Mexico, Colombia, and Central America.**

## THE MOMENT IS NOW

The impact debt market in LATAM is expanding. **Companies that position themselves today with conscious capital will have a competitive advantage tomorrow.**



# OUR PORTFOLIOS

Flexible capital for companies  
driving real-world impact.

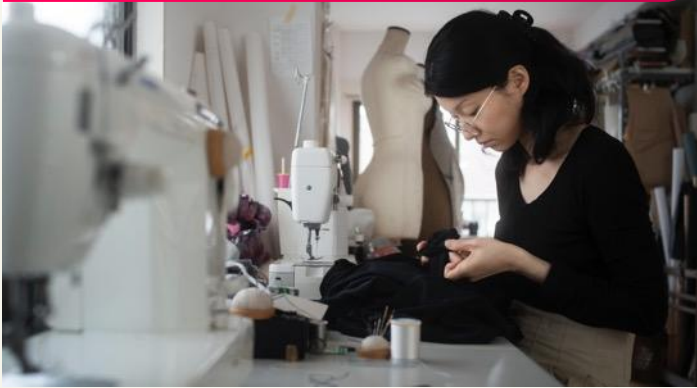
SOCIAL

ENVIRONMENT

INCLUSION

# PORTFOLIOS

## IMPACT DRIVEN COMPANIES



### CAPITAL FOR COMPANIES THAT CHANGE THE WORLD

Back the boldest ideas. For high-growth companies generating measurable social or environmental impact — we provide the fuel to scale.

TICKET SIZE	<b>\$200K – \$5M MXN</b>
TERM	<b>12 – 36 months</b>
RATE	<b>18.8% annual MXN</b>
CURRENCY	<b>MXN and USD</b>

## MESOAMERICAN REEF



### PROTECT THE REEF, GROW YOUR BUSINESS

Exclusive impact financing for companies operating in Belize, Guatemala, Honduras and Mexico — where ocean health and business success go hand in hand.

TICKET SIZE	<b>\$500K – \$20M MXN</b>
TERM	<b>12 – 48 months</b>
RATE	<b>Preferential impact rate</b>
CURRENCY	<b>MXN and USD</b>

## TRANSITION TO IMPACT



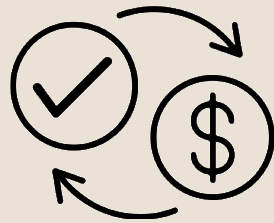
### THE BRIDGE FROM TRADITIONAL TO TRANSFORMATIVE

Ready to embed diversity, inclusion and belonging into your business? We finance the transition — gender equity, LGBTQ+ inclusion, disability integration and youth employability.

TICKET SIZE	<b>\$4M – \$30M MXN</b>
TERM	<b>18 – 48 months</b>
RATE	<b>14% annual MXN</b>
CURRENCY	<b>MXN and USD</b>

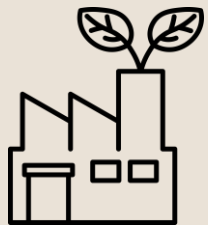
# PANORAMA DEL PORTAFOLIO

## PORTAFOLIO TOTAL



**135** completed transactions

## ALCANCE SECTORIAL



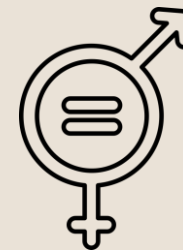
**+17**  
industries  
financed

## IMPACTO AMBIENTAL



**60%**  
loans in green  
industries

## ENFOQUE DE GÉNERO

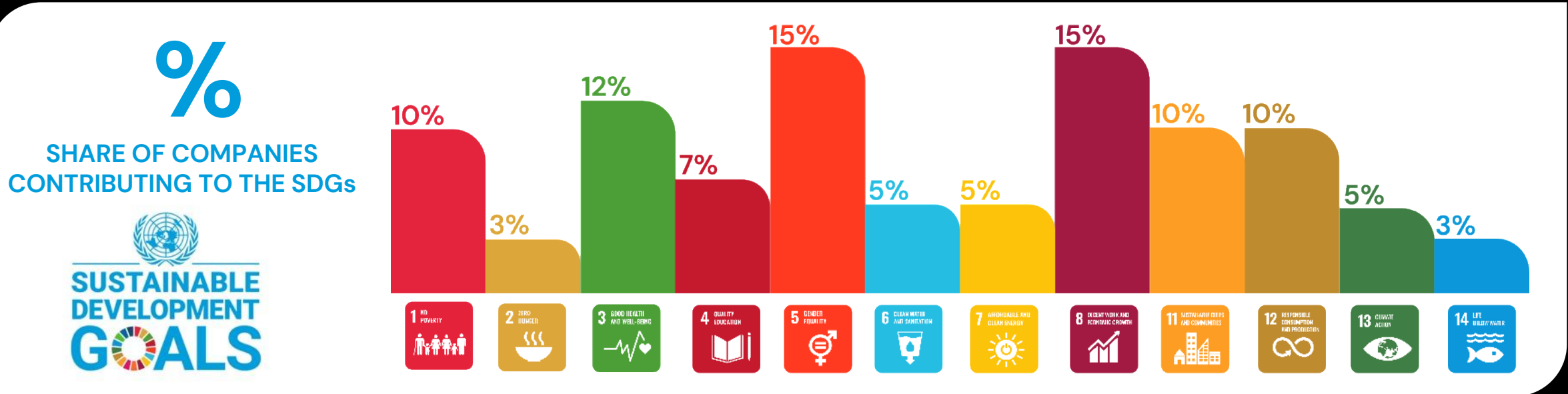
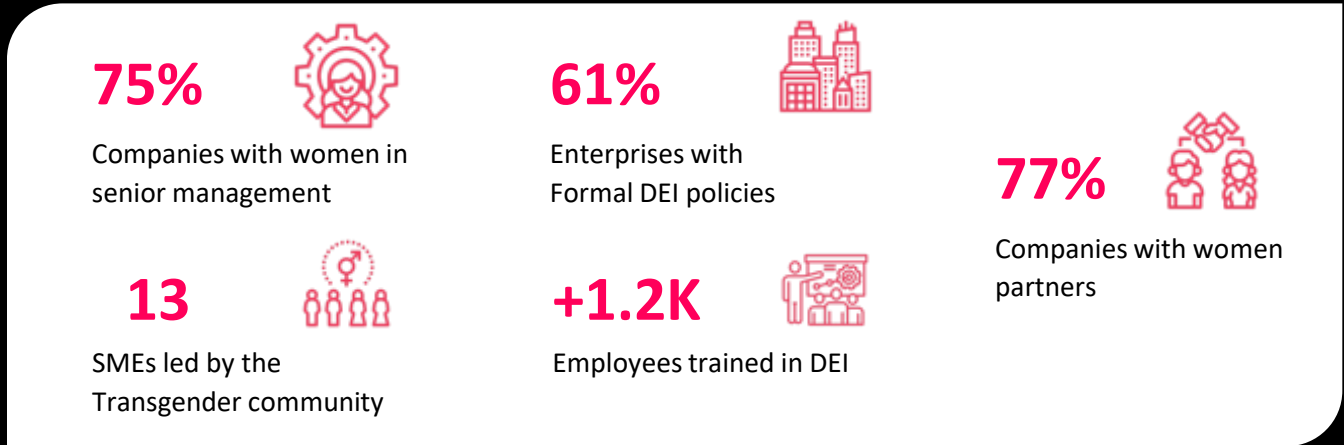
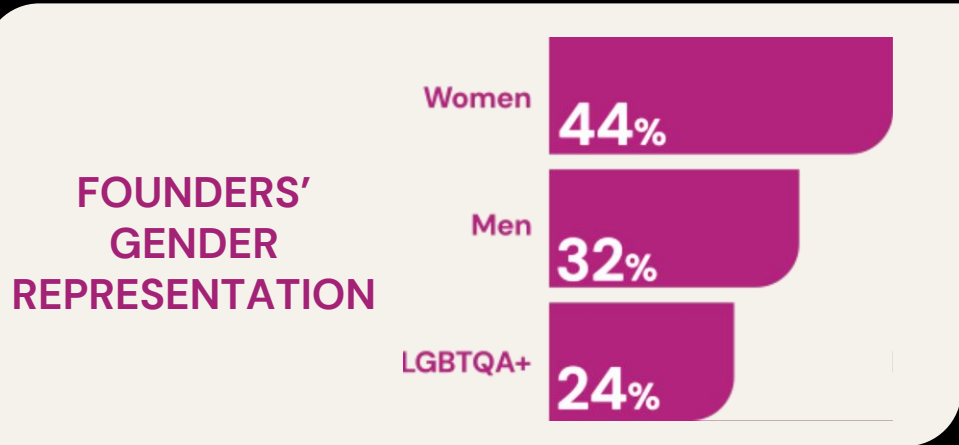


**+65%**  
investments with female  
/ LGBT+ leadership

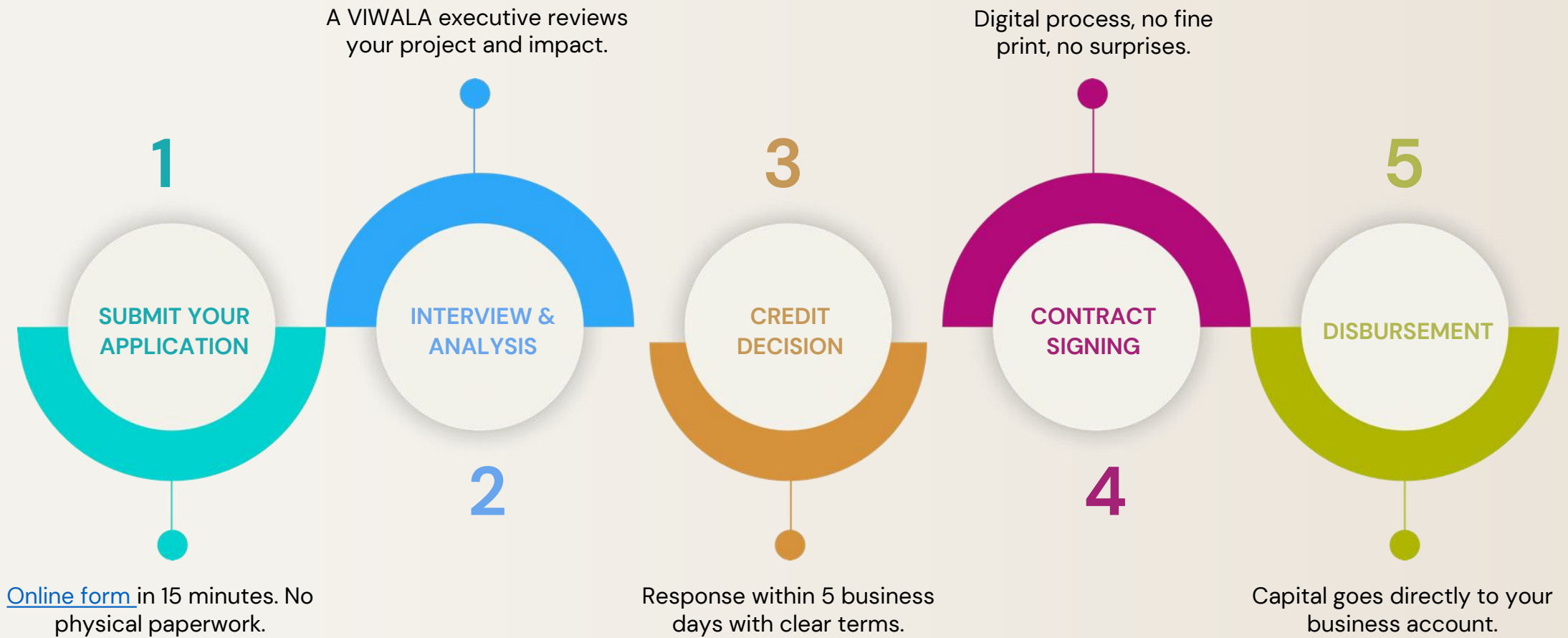
# OUR IMPACT



# OUR IMPACT



# HOW DOES IT WORK?



Questions?, We're here.



MILISSA BARRENA, DIR. COMMERCIAL & ALLIANCES

[milissa@viwala.com](mailto:milissa@viwala.com) • +52 55 9197 1826



**VIWALA**  
CAPITAL DE IMPULSO

WE FINANCE COMPANIES THAT  
CHANGE THE WORLD.

[viwala.com](http://viwala.com)