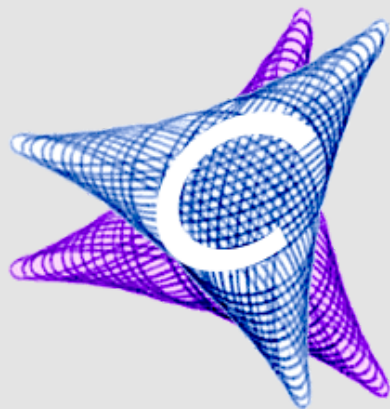
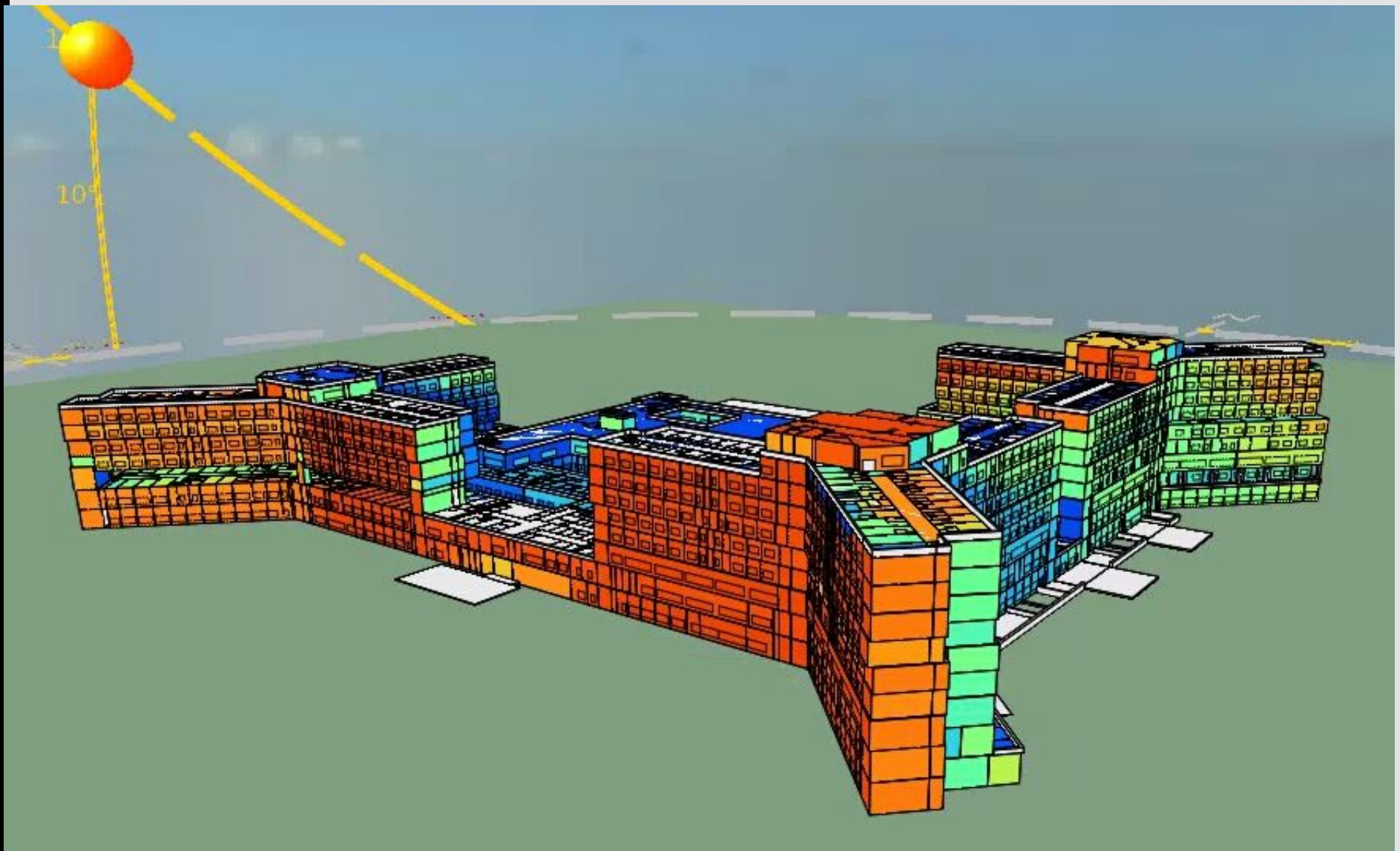


ADVANCED SIMULATION AND LEED CERTIFICATIONS

SUCCESS STORIES OF 2017-2020

CHAAC SIMULACIONES INC



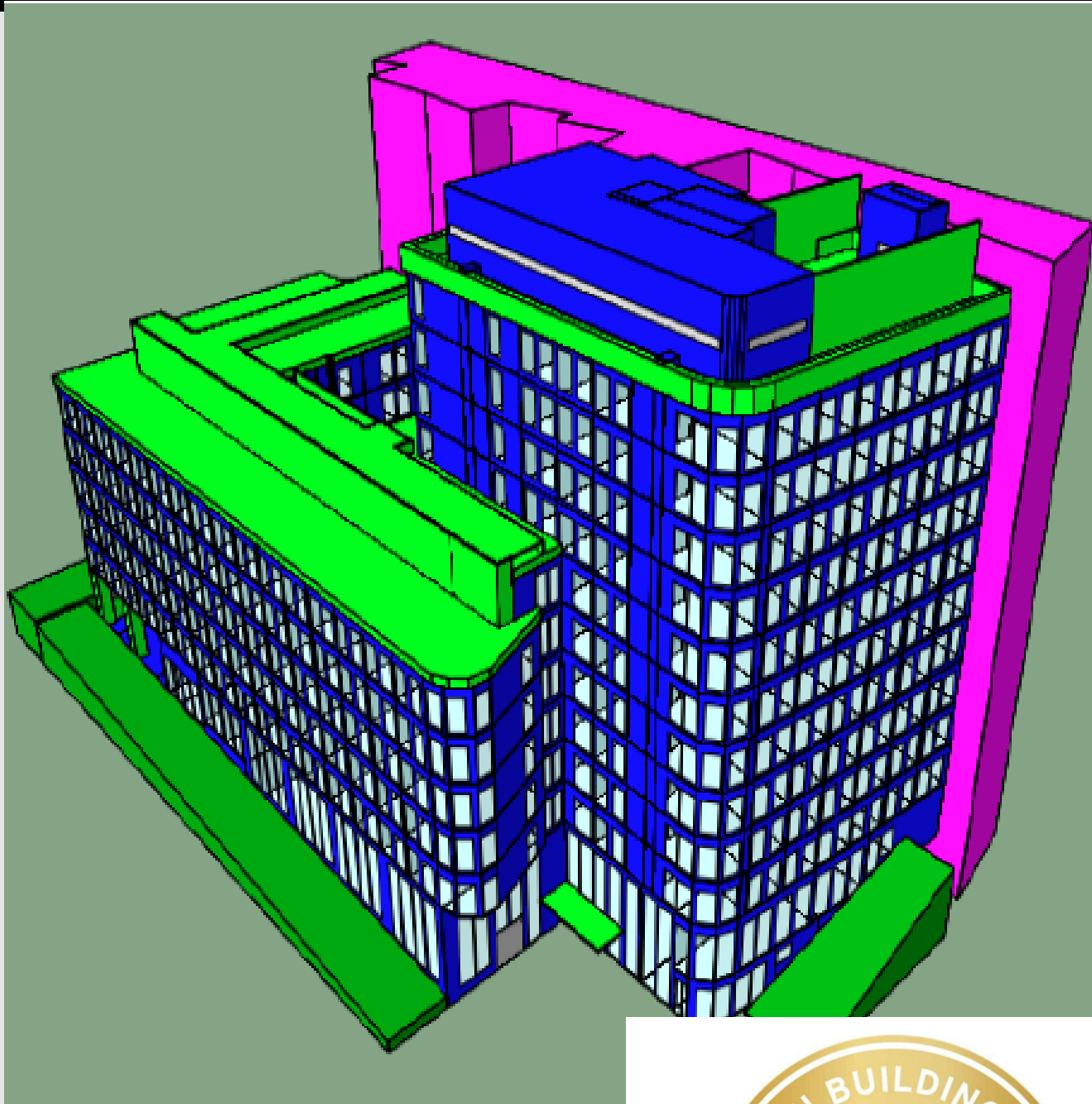


LEED v2009 - +2,600,000 sq.ft



REGIONAL HOSPITAL

Complying with LEED prerequisites and credits of minimum ventilation, energy efficiency, views, and daylight. In cooperation with EN4E.

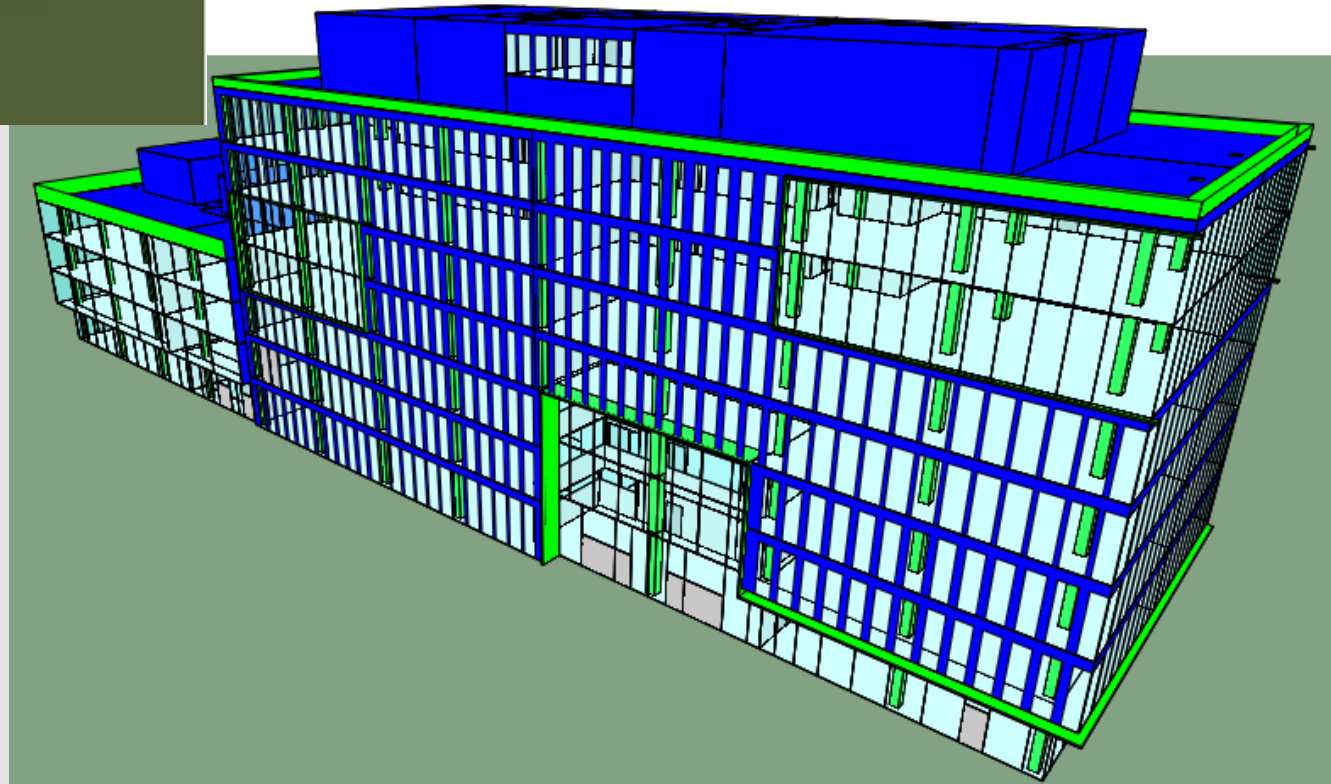


LEED v2009 - +105,000 sq.ft and 14 floors

HOTEL



Complying with LEED prerequisites and credits of energy efficiency and views.

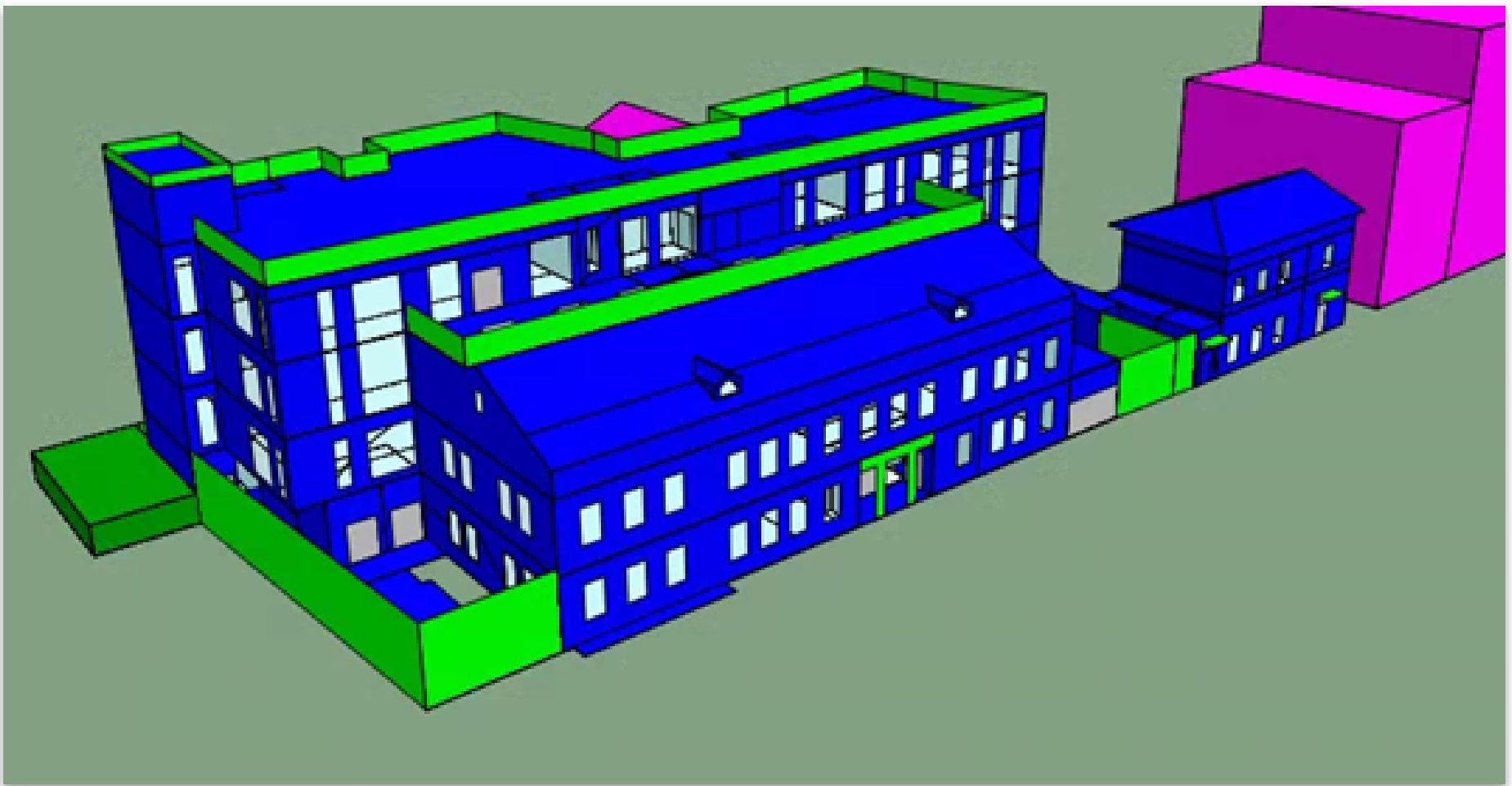


LEED v4 - 2 buildings of an innovation park

MIXED USE AND OFFICES

Paused project by customer

Complying with LEED prerequisites and credit of energy efficiency.

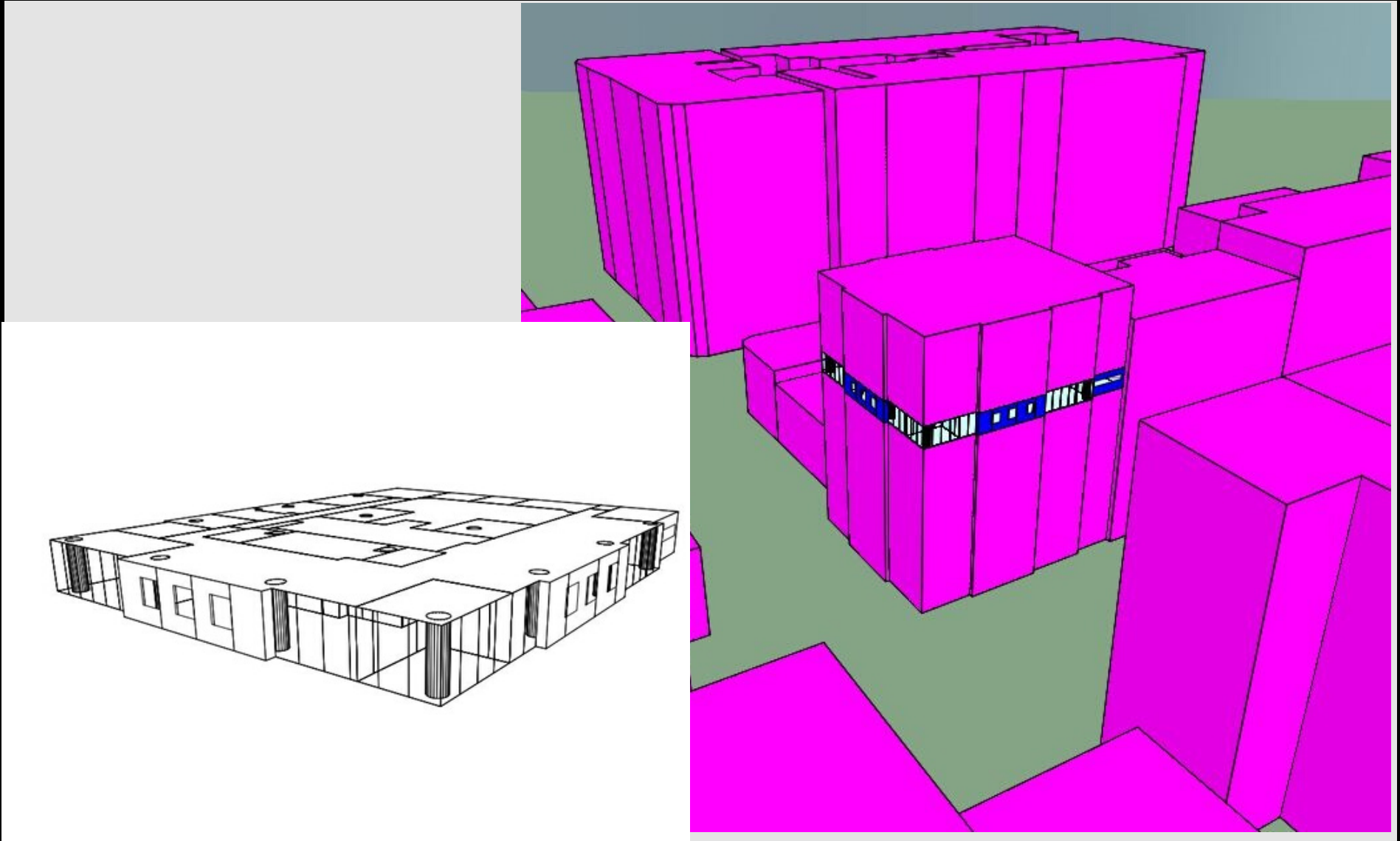


LEED v4 - +43,000 sq.ft



BUSINESS CENTER

Complying with LEED prerequisites and credits of minimum ventilation, energy efficiency, views, daylight, and location & transportation. In cooperation with EN4E.



LEED v4 - ID+C: CI - 5,630 sq.ft



OFFICE FLOOR

Complying with LEED prerequisites and credit of energy efficiency and daylight.

Building B
As adjacent

Adjacent
buildings

Building A
As simulated

Building B
As adjacent

Building A
As adjacent

Adjacent
buildings

MULTIPLE BUILDINGS APPLICATION

LEED v4 - School : +60,000 sq.ft.



Complying with LEED prerequisites and credit of energy efficiency. In cooperation with EN4E.

ENERGY MODELING FOR LEED CERTIFICATION

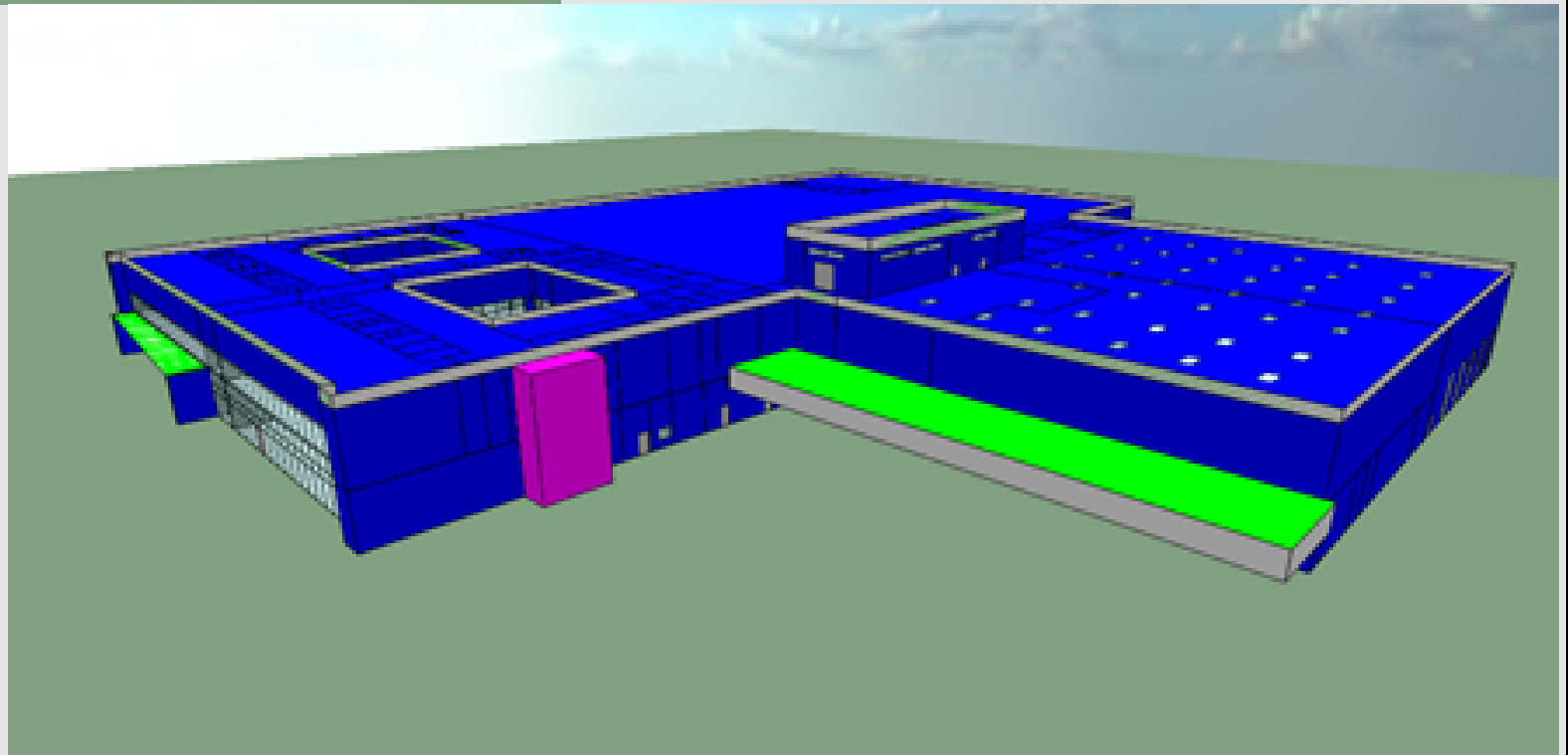
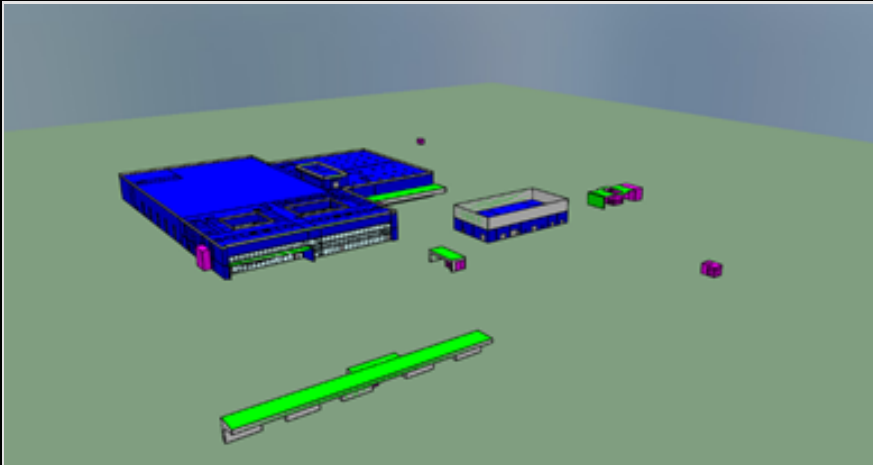
IN COLLABORATION WITH EOSIS

NATIONAL HYDROCARBON
RESEARCH INSTITUTE -
PACHUCA BRANCH

OPTIMIZE ENERGY
PERFORMANCE POINTS

16
of
18





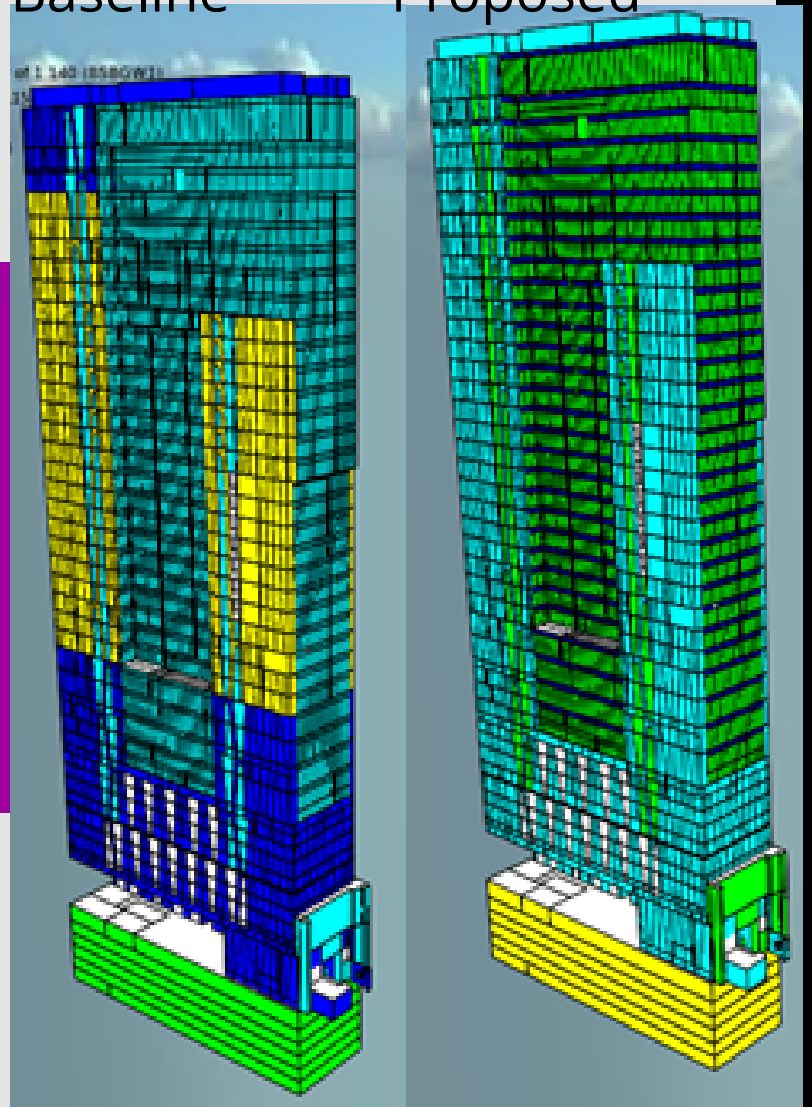
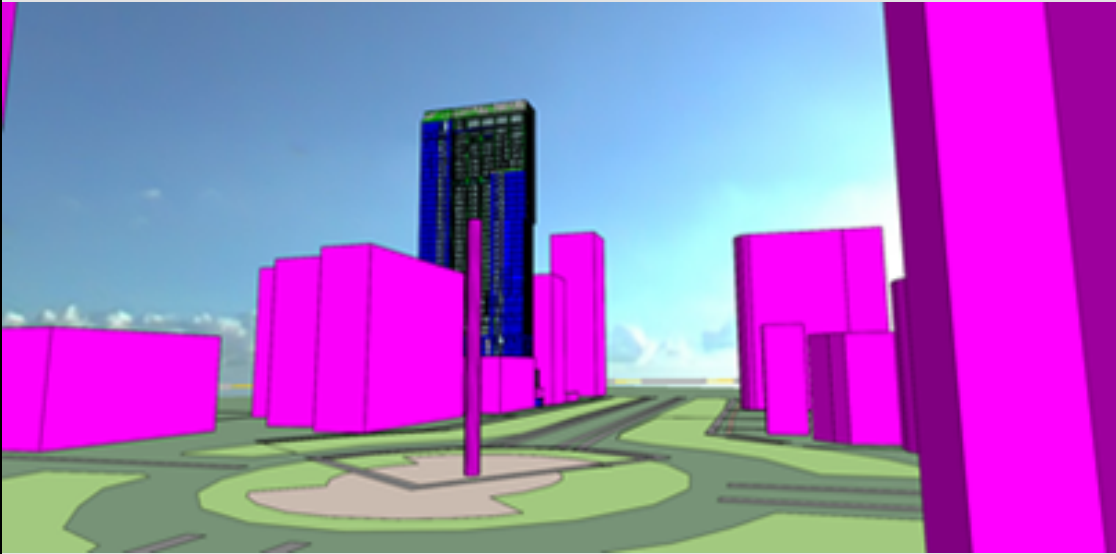
LEED v4 - +220,000 sq.ft.

MANUFACTURING PLANT

Under review by USGBC

Complying with LEED prerequisites and credit of energy efficiency. In cooperation with EOSIS.

Materials Distribution Baseline Proposed

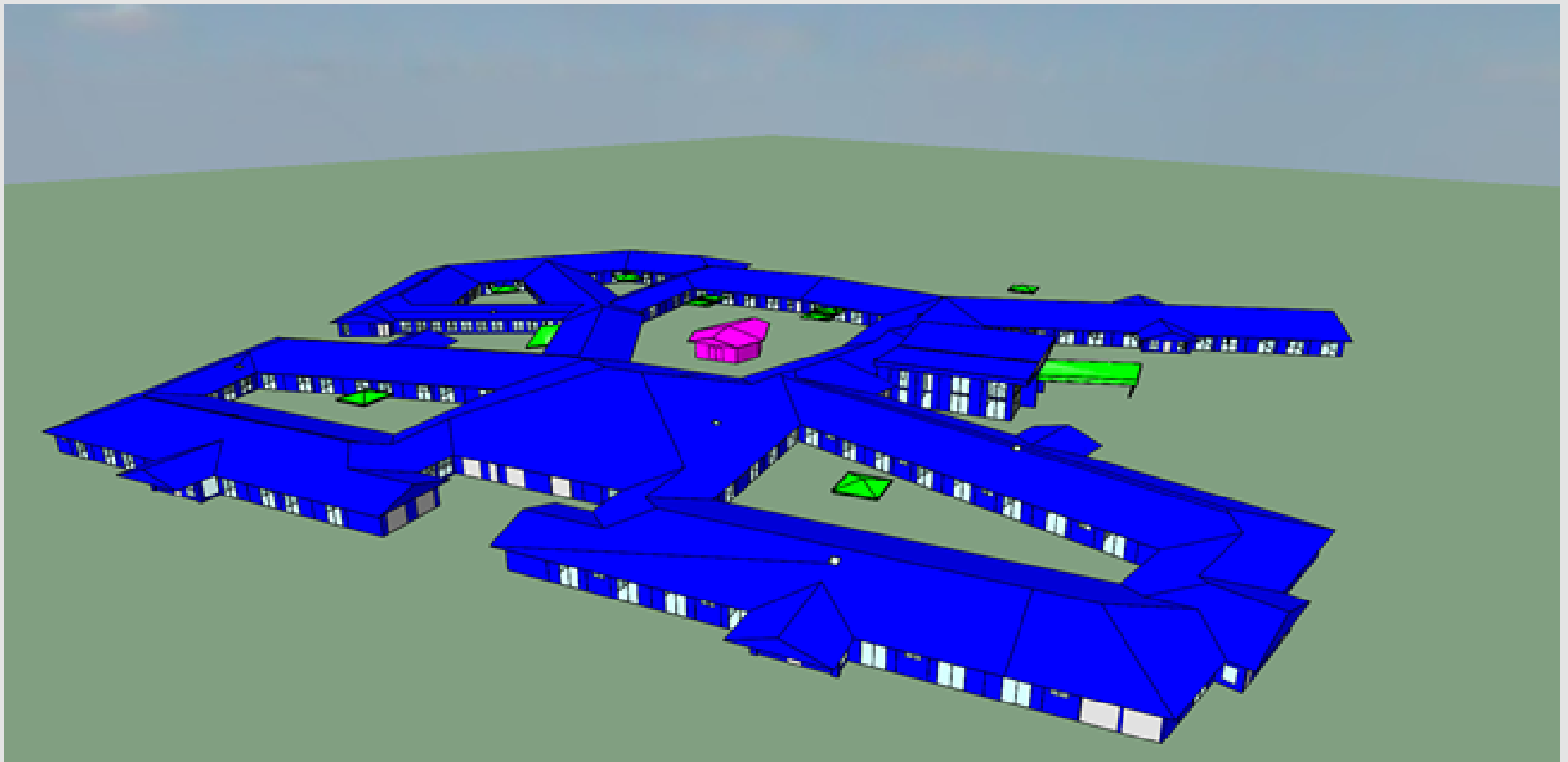


LEED v4 - +540,000 sq.ft.

HOTEL SOFITEL REFORMA

Under review by customer

Complying with LEED prerequisites and credits of energy efficiency and daylight. In cooperation with EOSIS.



Construction Permit - + 96,000 sq.ft

AGED CARE CENTER

Under review by authorities

Complying with local regulations to obtain construction permits. Envelope recommendation for the design to comply with required performance.