

COMPANY REPORT

# GRANDCANYON INFRACON PRIVATE LIMITED

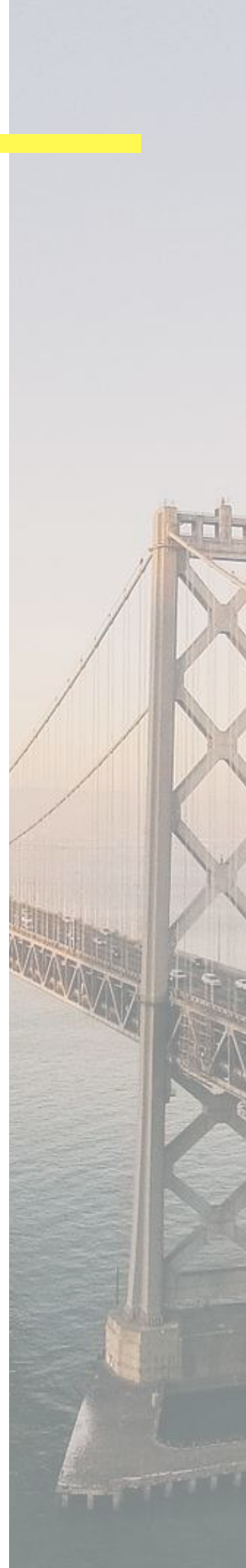


PREPARED BY  
THE MARKETING AND ADVERTISING DEPARTMENT

# DISCLAIMER

This presentation and the accompanying slides (the "Presentation"), which have been prepared by GrandCanyon InfraCon Private Limited (GCI INFRA) (the "Company"), have been prepared solely for information purposes and do not constitute any offer, recommendation or invitation to purchase or subscribe for any securities, and shall not form the basis or be relied on in connection with any contract or binding commitment whatsoever. No offering of securities of the Company will be made except by means of a statutory offering document containing detailed information about the Company. This Presentation has been prepared by the Company based on information and data which the Company considers reliable, but the Company makes no representation or warranty, express or implied, whatsoever, and no reliance shall be placed on, the truth, accuracy, completeness, fairness and reasonableness of the contents of this Presentation. This Presentation may not be all inclusive and may not contain all of the information that you may consider material. Any liability in respect of the contents of, or any omission from, this Presentation is expressly excluded.

Certain matters discussed in this Presentation may contain statements regarding the Company's market opportunity and business prospects that are individually and collectively forward-looking statements. Such forward-looking statements are not guarantees of future performance and are subject to known and unknown risks, uncertainties and assumptions that are difficult to predict. These risks and uncertainties include, but are not limited to, the performance of the Indian & global economy, the performance of the infrastructure industry in India and world-wide, competition, the company's ability to successfully implement its strategy, the Company's future level of growth and expansion, technological implementation, changes and advancements, changes in revenue, income or cash flows, the Company's market preferences and its exposure to market risks, as well as other risks. The Company's factual results, level of activity, performance or achievements could differ materially and adversely from results expressed in or implied by this Presentation.



GCI INFRA

# COMPANY OVERVIEW

Established in Financial Year 2016-17, GCI INFRA is today proudly an Asian Trade house and Infrastructure Company with meaningful and complementary interests in a range of sound business entities, focused primarily in the Landscaping & Urbanization, Highway / Road development, Real Estate & Commercial Construction, Manufacturing Units, Renewable Energy production, Mineral exploration & Mining, Oil Exploration, Petroleum Products and Commodity Trading and with a high set of values to every aspect of our business dealings and decisions. Our aim is to develop a cultural and economic evolution on a continent that requires responsible and developmental business practices. The “Business Way” is a principle that we apply to our business relationships as well as our internal practices, finding the balance between economic growth and social upliftment.

GCI INFRA is a composite general contractor firm based headquarters in the State of Rajasthan, India. Established in 2016-17 as part of upcoming future Group - a major conglomerate with over 3 companies- GCI INFRA has progressively targeting numerous ongoing large-scale turnkey infrastructure projects in different sectors including:

- **Highways, Roads and Infrastructure**
- **Engineering, Procurement, Installation & Commissioning (EPIC)**
- **Oil, Gas, Petrochemical and Industrial**
- **Pipeline Construction**
- **Maintenance of Oil & Gas and Petrochemical Installations**
- **Power Generation, Renewable Energy Plants**
- **Landscaping & Urbanization**
- **Value Added Turnkey Manufacturing**
- **Mineral Exploration & Mining**
- **Real Estate & Commercial Construction**
- **Smart Cities & Industrial Hub Development**

Our commitment to execute projects with the best precisions, on schedule and affordable budgets while adhering to excellent standards of technology, health, safety and Go Green environmental issues for GCI INFRA to be recognized as an icon in the construction community in India & Asia.

# THE MANAGEMENT

## DIRECTORS



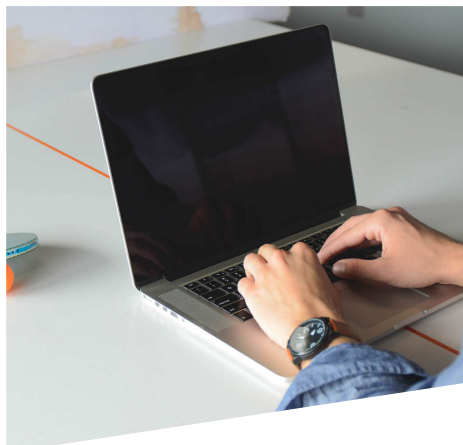
**Mr. TARUN MATHUR**  
**B.Sc. (Geology), MBA (Finance)**

— Managing Director



**Mr. MOHIT BHATNAGAR**  
**B.Sc. (Maths)**

— Director - Strategy



"VACANT"

— Director - Finance



WELCOME

# PARTNERS & CLIENTS



**LUKA**



Our projects involve overseeing a lot of moving stages and sections, often times from different people. To have a successful rollout, project managers rely on a well-crafted project plan to ensure objectives are met on time and on budget. A project plan is a formal approved document which is used to define project goals, outline the project scope, monitor deliverables, and mitigate risks.

# BANKER DETAILS



## BANKING, ACCOUNTING & TAXATION

Bankers:

Indian Overseas Bank, 11, Rituraj Building, Mirza Ismail Road, Jaipur City, Rajasthan, India - 302001

— Lead Bankers:



S. Singhal & Co., C-Scheme, Jaipur.

— Chartered Accountants:

S. Singhal & Co., C-Scheme, Jaipur.

— Sales Tax Lawyers:

## REVIEW STATS

Daily Views - 200

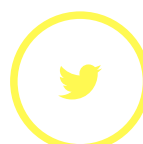
Monthly Views - 9K

Unique Views - 3K

## STATISTICS



5.5k+



3.2k+



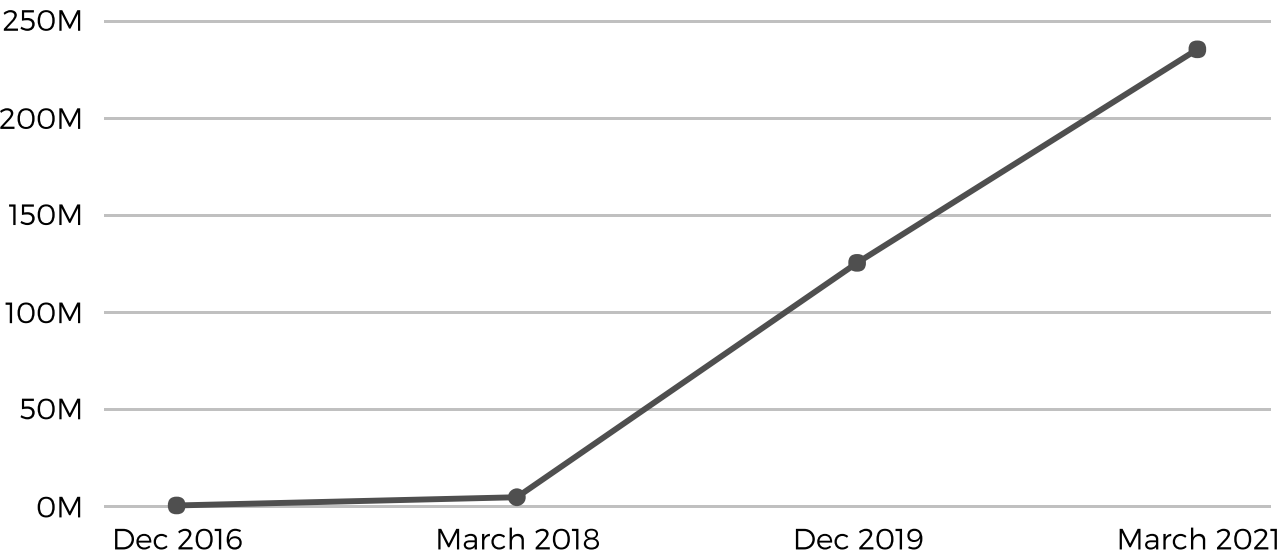
10.5k+



1.5k+

LEGAL & FINANCIAL SUMMARY

# PROJECTIONS



## 2018-21 FINANCIAL PROJECTION HIGHLIGHTS

**300%**

INCREASE IN GROSS  
REVENUE

**20%**

IN NET INCOME

**60%**

INCREASE IN GROSS  
EXPENSES AND STAFFING

Certificates

INCORPORATION U45500RJ2016PTC055861

TIN / VAT 08934063177(Central)

GST NUMBER 08AAGCG5137M1Z9

## AN OVERVIEW

# ESCALATING THE CASH FLOWS

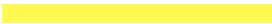
### "Financial Initiatives to Strengthen the Balance Sheet"

- The Fund raising programs through FDI & ECB for ongoing & proposed projects for better investments and revenue generation.

### "Focus on consolidation of balance sheet via deleveraging "

- Continuous reduction of Corporate Debt ROI
- Capital raising through Private Lending / Equity for Mining & Infrastructure Assets
- Induction of strategic / financial partner in Energy Generation holding company
- Flexible Investments for new proposed Energy / Highway projects
- Recovery of receivables from Energy Distribution companies, Mineral trading & Expressways Toll gates, etc

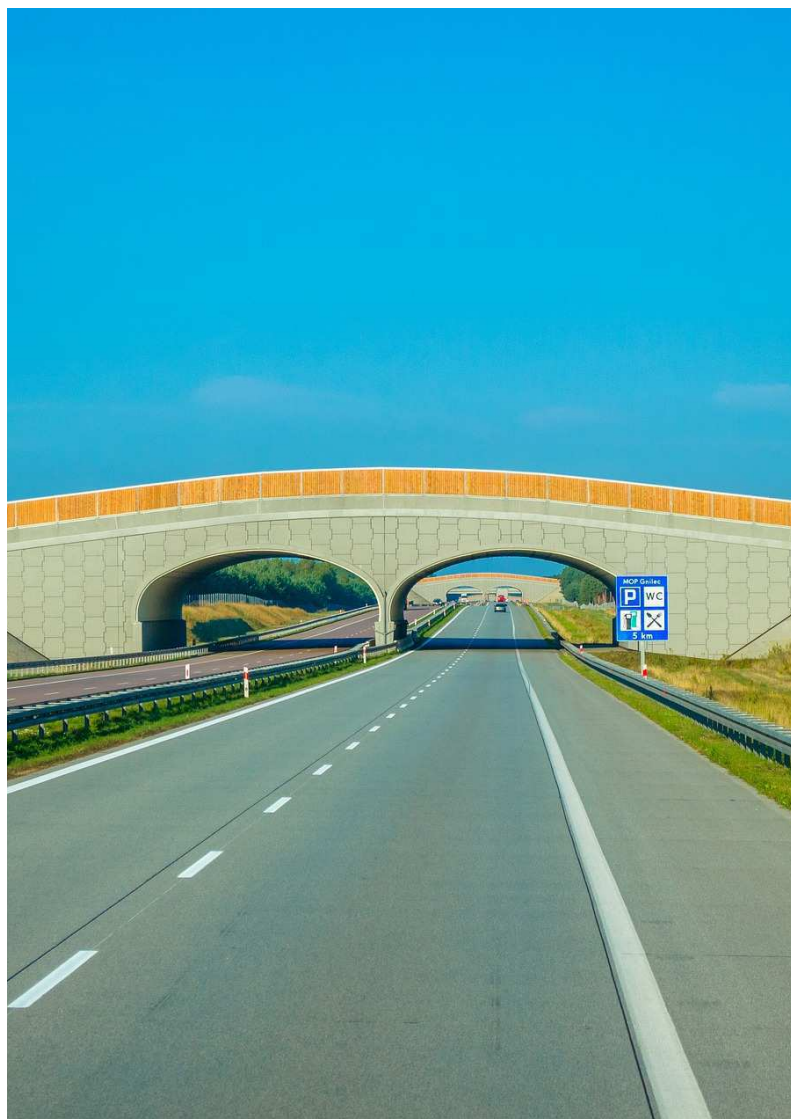
### "The Refinancing of projects debts through bank refinancing routes "

- Reduced interest rates;
  - Projects get longer moratorium periods;
  - Extends the maturity of debt funds, primarily to align the repayment schedule with the Cash Flows of the projects;
  - Note: - Please contact us on email for Investors / Investing Proposals.
- 



# OUR CAPABILITIES

25 Milestone Bridges



## ROAD DEVELOPMENT

# EXPRESSWAYS

The company is capable of executing Road work of National Highways and expressway of any length including works of 2/4/6 Lanes New Alignments, conversion to 4/6 Lanes of existing highways, Construction of High tech Expressways, bypasses, Service roads, Hill roads etc.

### Highway Project Elaboration & detailing

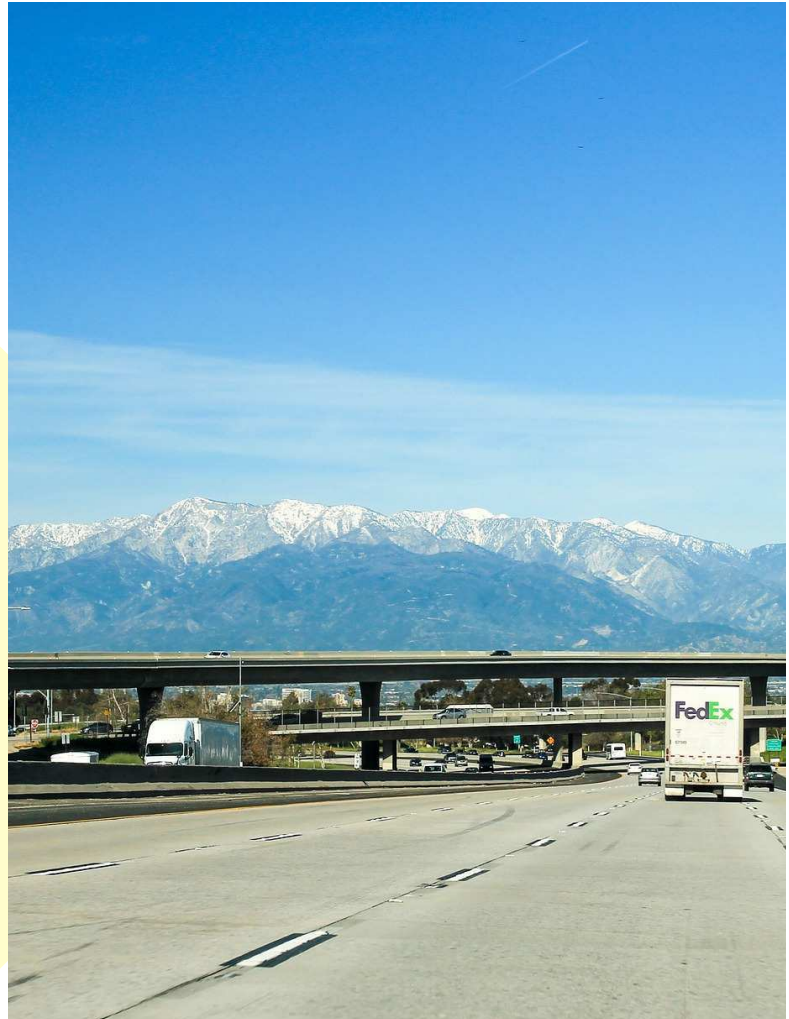
- Survey, drawing, design with site investigation, sub-soil exploration and testing of the geo-material.
- Preparation of detailed project report with the estimations
- Prior Approvals from NHAI & Other Authorities
- Set out.

### Construction work

- Formation work includes Earthwork in excavation, leveling and embankment
- Sub-grade with Murrum blanketing
- Proper Drainage System enfolded with Highways

Apart from the above mentioned work, the company executes specialized Highway Roads through their Specialists Panel in the Highway sector like:

- Soil stabilization using Geo-synthetics
- Mechanical Stabilization
- Lime Stabilization
- Bitumen Stabilization
- Cement treated Granular Sub-base,
- Bituminous concrete using Lime,
- Crumbed rubber mix bituminous concrete,
- Modified bitumen concrete.



## OUR EXPERTISE

- Highways and roads
- Underpasses, bridges and interchanges
- Major earth and reclamation works
- Turnkey Infrastructure Projects



# OPERATIONS OF TOLL ROADS

The company has the capability to execute the operation and maintenance of Toll Roads. The detailed response to the technical requirement of the project is as under;

**Road Maintenance** - this includes emergency; routine; disaster maintenance and inspection;

**Traffic Management** – incident management; enforcement of regulations together with the relevant authorities; hazard response; information gathering and dissemination; road patrols and surveillance;

**Safety** – accident prevention; after care; user behavior; education; enforcement; data collection and analysis;

**Facility management** – including periodic inspection, routine maintenance, rehabilitation and expansion planning;

**Road property management** – management of access, encroachment and ribbon development

**Toll fee collection** – provision of the appropriate equipment and system; revenue collection, administration and auditing

**General responsibilities** – including budgeting, compliance with legal and accounting requirements, and public relations

**Planning of Operations and Maintenance Centre** – including the basic planning, comment on the details design, and design co-ordination.

Training of appointed official in various aspects of O&M management, administration and technical proficiency.







# OUR MINING CAPABILITIES



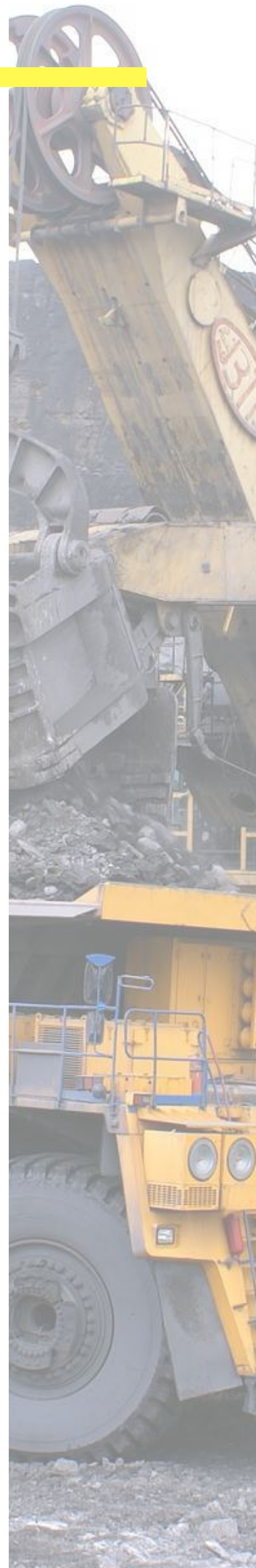


# MINING SECTORS

- Underground & Open Cast mining work for Zinc, Copper, Manganese, Bauxite, Iron Ore, Gold, Uranium & other Base metals at global mining locations
- Open Cast mining work for Limestone, Shale, Dolomite, Quartz, Chrome, Coal, Manganese, Bauxite, Iron Ore, etc.
- Turnkey construction of Long Drifts, Ports and Transportation facilitations
- Construction & Sinking of Deep Shafts Erection, Fabrication & Installation of Head Gears
- Equipping of Miners & Material Handling Shafts on Turnkey Basis
- Open cutting of Inclines & over Burden Removal of Open Cast Mines
- Logistics - Transportation & Shipments

## OUR EXPERTISE

- Develop roads and Ports
- Open Cast Excavations
- Major earth and reclamation works
- Turnkey Mining Projects







# ENERGY SECTORS

- The company has been executing various works for Captive Solar Plants, Thermal Power Plants, Hydro, Oil & Gas Turbines based Power Plants.

The company is also actively advancing its presence in transmission and Distribution sector.

The company is also in the business of identification of areas where hydro power plants can be set up.

- GCI INFRA is a Reputed EPC and O&M contractor for utility-scale solar power projects. Building on its extensive experience of medium – large scale solar projects, the company is well positioned to meet the challenges of the rapidly growing global solar market. With a strong in-house engineering capability, global scope and unmatched responsiveness, GCI INFRA get the best designs and avails high quality performing solar projects for its production purposes.

## OUR PROCEDURE

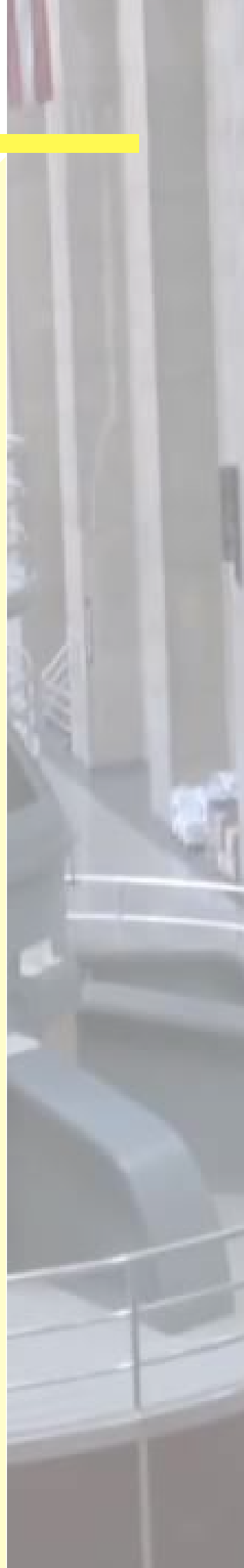
- Load Assessment
- Vendor Management
- Prefeasibility Study
- Project Planning
- Equipment Installation  
Commissioning



# POWER SECTORS

## Thermal Power Plant

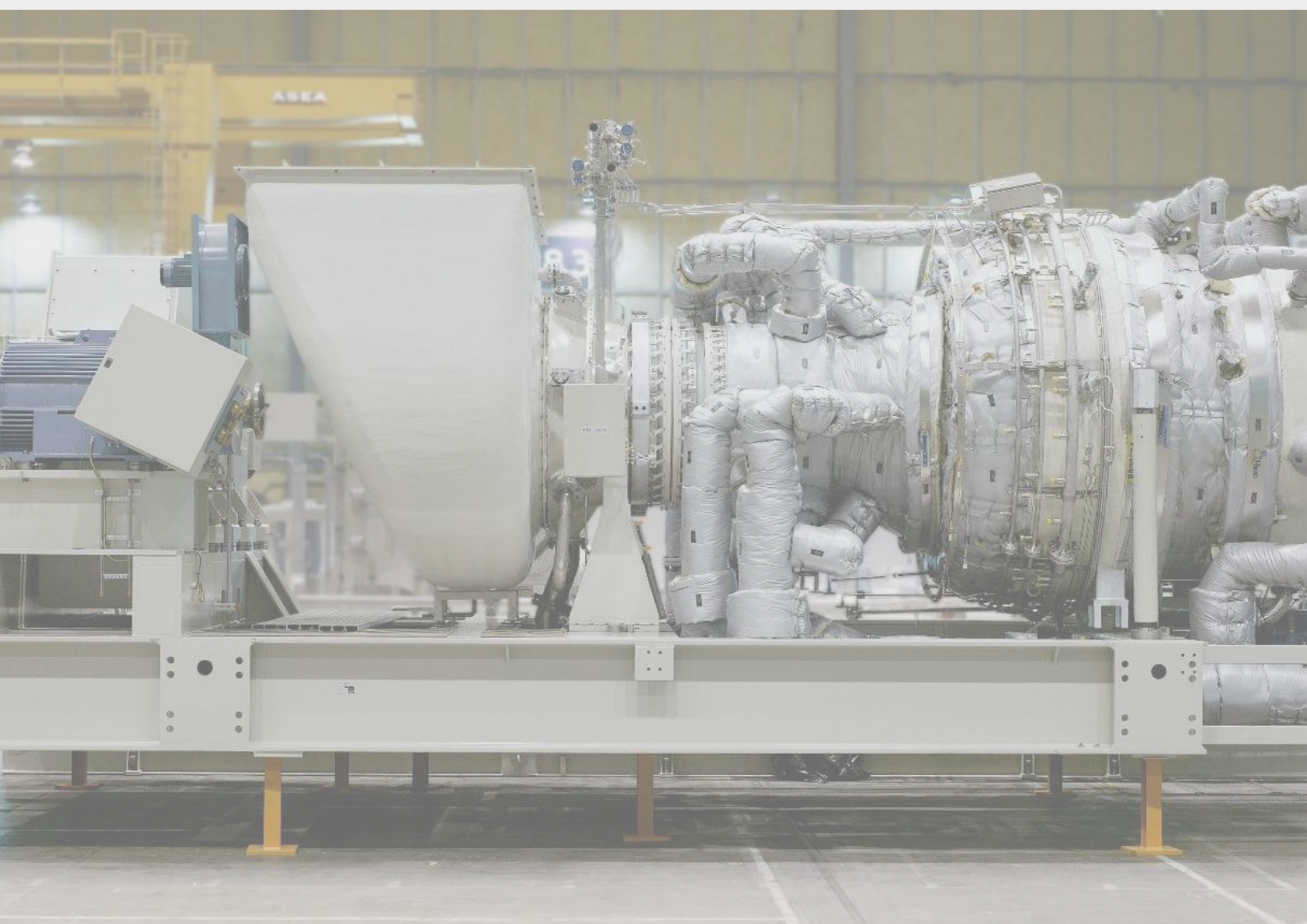
- Survey, Identification, Layout & Land Development of entire power plant
- Civil works facilitating the erection & commissioning of Heavy Machinery, Coal Handling plant, Wagon Tripler, Track Hopper & Conveyor foundation
- Civil work for Boiler, Turbine, Bunker foundations, Chimney etc.
- Civil works for R.W. & C.W. Pump Houses
- Construction & Raising of Ash pond/Ash Bund/Ash Dyke
- Civil & Mechanical work for Ash Disposal, Water Supply, etc. including Pipeline, Structures etc.
- Construction of ETP, WTP and recycling system, Ozonisation etc.
- Construction of staff quarters & other amenities.







# CONVENTIONAL GAS TURBINES



# ONGOING JV / COLLABORATION

GCI INFRA has signed MOUs, Entered into Joint Venture / Technical Collaboration in different sectors with following National and International Corporates:

## POWER

### 1. ASRDEEP GROUP

GCI INFRA has entered into Joint Venture Agreement / MOU with ASRDEEP GROUP, Varanasi for all prequalification and EPC Work for 50 MW of Solar Captive Plant at Surender Nagar, Gujarat.

2. Establish & Construct the proposed Waste treatment Plant with the capacity recycle 500 tonnes of raw garbage per day at Jaipur City. The Municipal Boards have to collect minimum 500 tonnes of garbage and recycling at plant produces clean power for community usage - supply to Jaipur Electricity DISCOM.

Note: - Our Company welcomes partners for Joint Ventures / EPC Partnership globally for Renewable Energy Plants.



## HIGHWAYS

Our Company is looking for Joint Venture Agreement with experienced INDIAN / GLOBAL COMPANY/IES LTD. for preparing & bidding the tender offers of NHAI at Nagpur-Mumbai Expressway, Delhi & nearby Expressways and more on global tenders. The Partner Company must have good track records, experience and good exposure to EPC, Bidding Process, and Project Completion Certificates & not blacklisted anywhere.



## MINING & EXPLORATION

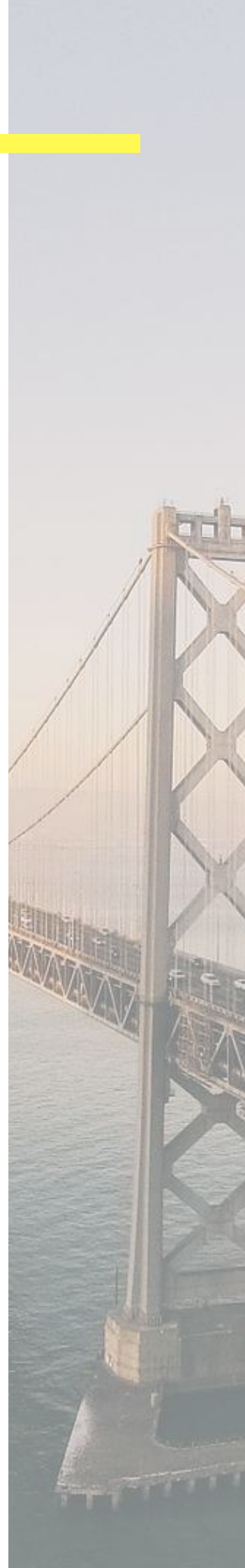
Our Company is looking for Joint Venture Agreement with GLOBAL COMPANY LTD. for preparing & bidding the mine offers of Asian, European, South American, North American, Australian and African countries and more on. The JV Partner Company must have good track records, experience and good exposure to Mines & Mining Techniques, Infrastructure & Instrumentation, Procurement Processes, and Project Exploration & not blacklisted anywhere.



# PLANT & MACHINERY

Concrete pump 01  
Concrete Mixers 01  
Concrete Batching Plant 02  
Needle Vibrators 05  
Advance Vibrator/ multi 02  
Generator's 05  
Welding Sets 02  
Pumps 05  
Winch-5 storey 05  
Scaffolding 400 tonnes  
Plates 5000  
Jeep 01  
Dumpy level / Theodolite 01  
Derrick Crane 02  
Drilling/ grinding Machines 10  
Cube testing M/c100t 01  
Steel cutting machine 05  
Steel Bending machine 02  
Hanging Platform 01

Lifting Equipment 07  
Mobile Crane 01  
Tower Crane 00  
Tower Lights 00  
Man Lift 00  
Concrete Mixer 01  
Forklift & Tele Handler 02  
Power Floats 00  
Self-Loader 00  
High Water Pressure Pump 01  
Earth Works 01  
Asphalt Cutters 01  
Trencher / Surface Miner 00  
Vibrators 00  
Bulldozer 01  
Hydro Testing Pump 01  
Back Hoe (JCB) 00  
Air Compressor 02  
Excavator 00  
Dewatering Pump (6" & 3") 01  
Wheel Loader 00  
Uni-Loader 00  
Power Screen & Vibratory Screen 00  
Water Tank Truck 00  
Mobile Jaw Crusher & Impact  
Crushers 00  
Roller 01  
Sand Plant 00  
Compactor 00  
Kerb Casting Machine 00  
Grader 00  
Interlock Laying Machine 00  
Tipper Truck & Trailer 01  
Articulated Dump Truck 00  
Buses 00  
Pickups 00  
Trailer with Low Bed & Flat Bed) 00  
Cars 00  
Recovery Truck & Pickup 00  
Others 00 and Tot



# CONTACT US



## WHAT WE DO

We are Infrastructure and Construction Company that inspire people to live and work at their best. Our work reaches across various industries including the following:

- Corporate/Commercial Offices
- Mining & Exploration
- Health Institutions
- Power Generation
- Education
- Government PPP
- Industrial Hubs
- Residential Hubs

### CONTACT

+91-779-300-8425

[www.gcicpl.in](http://www.gcicpl.in)

[info@gcicpl.in](mailto:info@gcicpl.in)

[grandcanyoninfracon@gmail.com](mailto:grandcanyoninfracon@gmail.com)

G 685, Gandhi Nagar  
Tonk Road, Jaipur City,  
Rajasthan, India