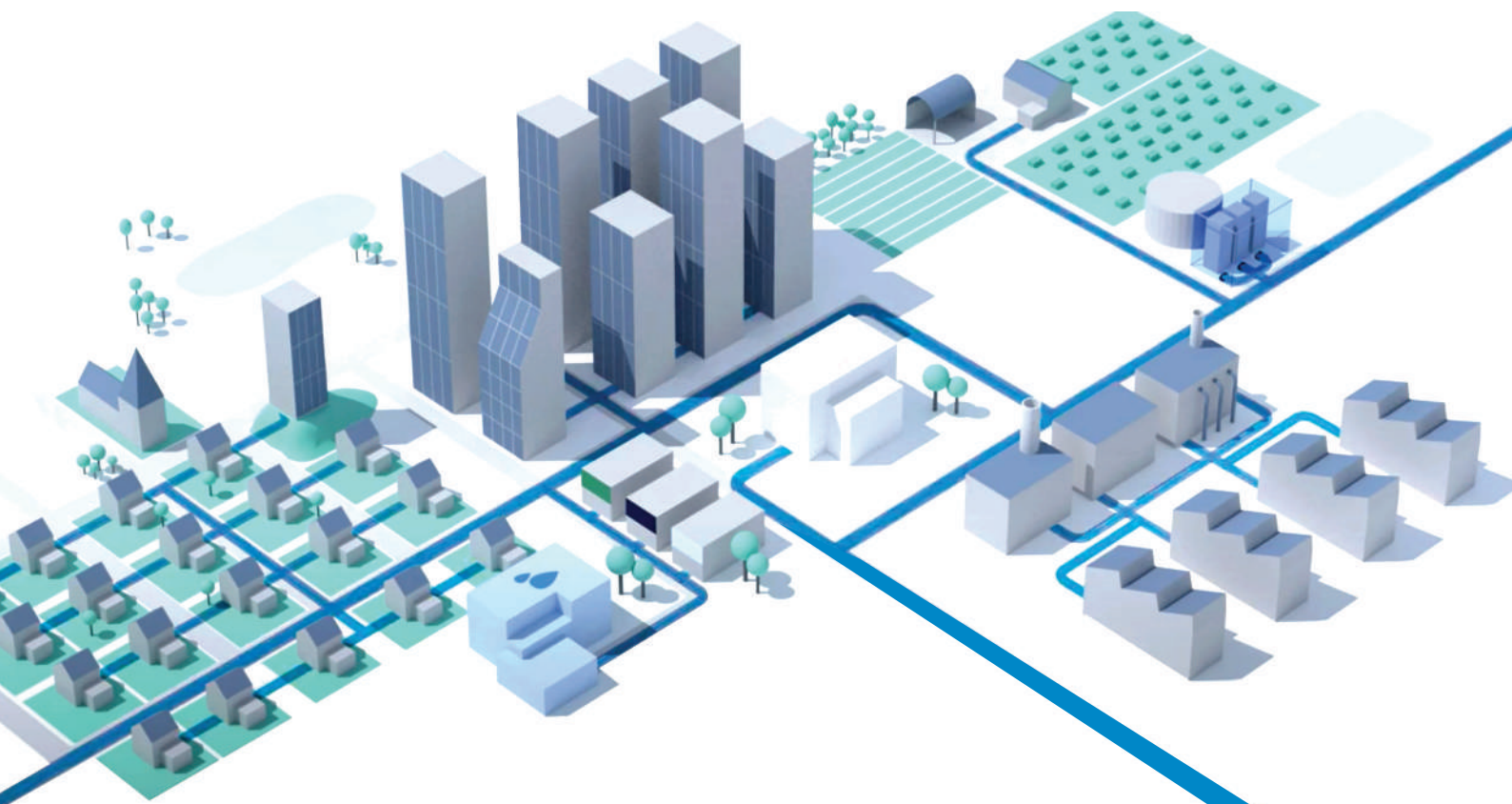


Water Wise System[®]

www.wakaru.eu
www.smartforutilities.com

Integrated solution for intelligent management of operations in water networks.

Focused on the integral management of the water cycle, it transforms data into knowledge, using predictive and analytical models supported in Machine Learning and Deep Learning and identifies anomalies in real time. Offers a holistic view of water networks: for human consumption and waste - domestic, industrial and rainwater, responds to and avoids interruptions, water losses and fraud in services, condition and failures of assets and communications failures. Promotes the balance between supply and demand in water flow and water pressure management while it can continuously monitor water quality.

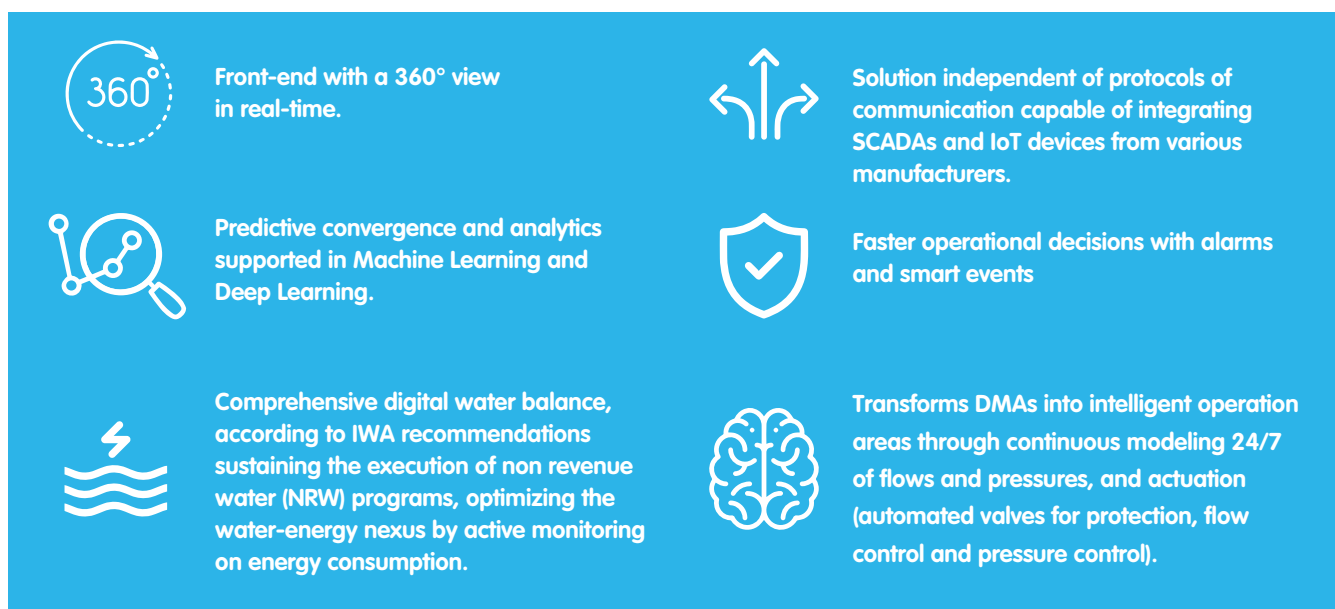


wakaru[®]



know to change.

WaterWiseSystem® is an intelligent solution specifically designed for management and massive processing of complex and heterogeneous events. Links the different realities that surrounds all networks in the context of the urban water cycle, being able to analyze parameters of water management, energy consumption, meteorology, consumption behavior of the DMAs and determines their sustainability. **WaterWiseSystem®** is the first and only solution that supports water management entities in addition to reducing non-revenue water in order to be better prepared for climate change and carbon neutrality.



Analytical technology based solution prepared for Big Data, promotes convergence and correlates water data and energy consumption data from smart meters (instrumentation and sensors) installed in the networks, with external data that may be relevant as meteorology or smart city management platforms;

Predictive analysis algorithms, developed specifically for the water and sanitation sector. If the wastewater network is sensorized it allows to integrate information with the WWTPs and to coordinate the response to extreme weather events;

Anomalous event detection mechanisms, uses analytical data, based on historical behavior patterns and references and does predictive analysis by classifying the type of event;

Event life cycle management and typification, from the detection, classification and measurement of their characteristics in the different aspects, supporting information, with actions and the registration of the participation of users, and verification of the resolution;

Operational activities hierarchization, based on events or other concepts - facilitates the visualization of information, allows a correct forecast, maintenance, planning and operational management in the short and medium term;

Management platform, which assists the decision-making process in planning, asset management, key indicators, operational performance parameters, in investment and other long-term decisions;

Open platform, to any external data source or data exchange, for future integrations and interoperability with systems like GIS – Geographical Information System, SCADA-Supervisory Control and Data Acquisition, field services/teams management and ERP-Enterprise Resource Planning.



Business delivery models . On Premises and SaaS - Software as a Service

Co-financed

