





## WHO WE ARE

CONSULAR Consultores Argentinos Asociados S.A. is a Civil Engineering Consulting firm, with a track record of over 50 years providing engineering services for large-scale projects in transportation, mining, water resources, sanitation, and works of civil infrastructure.

In the past 15 years, we have specialized in conducting photogrammetric and topographic surveys using laser technology, for which we have LiDAR technology systems, both mobile terrestrial and airborne. We have our own equipment and aircraft, ensuring the provision of these services at any time as needed.

CONSULAR's proficiency is based on it's know-how after years of extensive technical and practical experience. The entrepreneurial spirit, adaptability, permanent investment in advanced technological equipment, and the team members professionalism have allowed us to become a top ranked company.

Dedication and pursuit of perfection in every job reflect the passion with which we develop engineering solutions. Our ambition is to reciprocate the trust of our clients, with whom we aim to establish close, long-term working relationships.



*Minig Access Road*



*Project. Garupá Bridge - Misiones*



Our experience allows us to successfully handle studies and projects of high demand and complexity through the following services

# 2 SERVICES

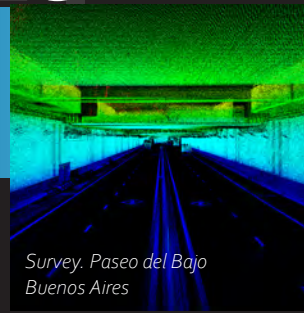
## WE OFFER

### ENGINEERING SOLUTIONS

- Feasibility studies, preliminary designs, executive and detailed projects related to:
  - Road and railway design
  - Hidrology and hydraulic works
  - Sanitary engineering
  - Bridge and structures
  - Architectural works
  - Urban infrastructure
- Construction site inspections
- Office assistance for construction projects
- Topographic surveys with LiDAR technology:
  - Mobile terrestrial LiDAR
  - Manned and unmanned airborne LiDAR
- Cartography - GIS
- LiDAR data processing

### WORK AREAS

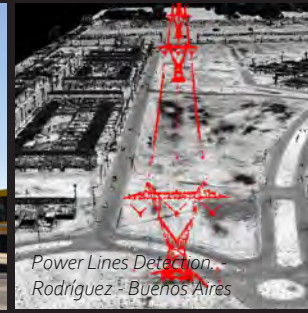
- Transportation
- Mining
- Oil & Gas
- Water Resources
- Sanitation
- Structures
- Forestry



Survey. Paseo del Bajo  
Buenos Aires



Metrobus Construction  
Inspection. Rosario - Santa Fe



Power Lines Detection.  
Rodríguez - Buenos Aires



Construction Inspection of Caleta  
Paula Port Expansion



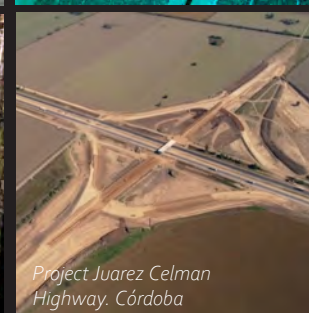
Ledesma Survey.  
Biomass Study



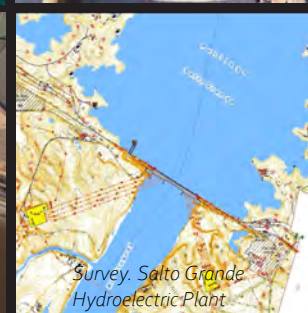
Project for General Belgrano  
Railway Branch C12



Survey. YPF Distillery



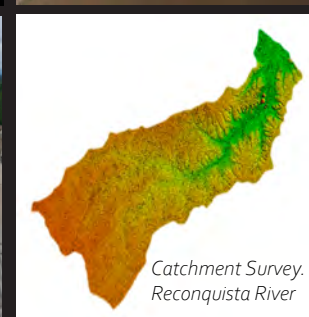
Project Juarez Celman  
Highway. Córdoba



Survey. Salto Grande  
Hydroelectric Plant



Project. National Route N°38  
Highway. Córdoba



Catchment Survey.  
Reconquista River



International Link Works  
Inspection. Yacaré

# 3 ENGINEERING SOLUTIONS

CONSULAR, FOR MORE THAN 50 YEARS, HAS BEEN PROVIDING ENGINEERING SERVICES FOR LARGE-SCALE PROJECTS IN TRANSPORTATION, MINING, WATER RESOURCES, SANITATION, AND CIVIL INFRASTRUCTURE. OUR TEAM IS COMMITTED TO DEVELOPING CUTTING-EDGE SOLUTIONS TAILORED TO MEET THE DEMANDS OF EACH PROJECT, ENSURING EFFICIENCY, SAFETY AND SUSTAINABILITY.






*We carry out all necessary studies from planning and feasibility to basic and detailed engineering stages. Additionally, we provide on-site technical assistance and conduct inspections during construction.*

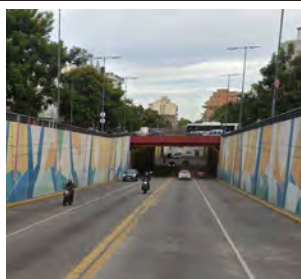


## ROAD PROJECTS



**More than 550 km of highways.**  
**More than 600 km of two-way roads.**  
**More than 200 km of urban streets.**  
**More than 150 free way interchanges.**

 Award-winning works recognized by 'Asociación Argentina de Carreteras'



*Av. Constituyentes Underpass and Mitre Railway*



*Improvement Project for Mining Access Road - 200 km*



*Project – National Route N°34, Highway - Rafaela, Santa Fé*



*Project International Bridge - Posadas, Encarnación*



*River side road of Posada - Misiones. Developed for the Binational Entity of Yacyreta*



*Project on the Third Lane to the Ring Road of Córdoba City*



## SANITATION WORKS



**More than 250 km of sewer networks.**  
**More than 20 km of pressure pipelines.**  
**More than 60 km of potable water networks.**



*Expansion of the Sewer Network of Río Gallegos – Santa Cruz*



*Interprovincial Aqueduct Auditing Coronda - San Francisco*



*Project of Sewer Network El Calafate, Santa Cruz*

*We develop services with the highest engineering standards. We apply the best technologies and the we have the expertise to carry out projects with high added value, providing competitive solutions in diferent fields.*



## RAILWAY PROJECTS



**More than 1800 km of projected railway lines.**  
**More than 350 level crossings.**  
**More than 1000 km of railway works inspected.**



*Works Inspection. Rail Structure Renewal Buenos Aires – Rosario, Sector III: Branch GM1B*



*Economic Analysis and Executve Project for the Railway Bypass. Santa Fe*



*Works Inspection. Rail Structure Renewal General Belgrano Railway - Branch C Santa Fe*



*Work Execution Inspection. New Track on the Buenos Aires-Mar Del Plata Branch of the Roca Railway*



*Work Inspection. Total Renewal of the Rail Structure. General Belgrano Railway Branch F1 - Santa Fe*



*Surveying and Project Development at the General San Martín Railway Stations for Subsequent Platform Elevation*

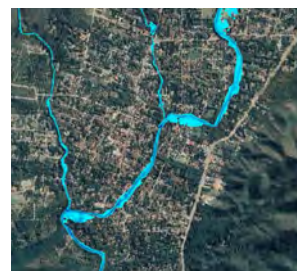
## HYDRAULIC PROJECTS



**More than 10 retention ponds designed.**  
**More than 15 km of riverbank lines.**  
**More than 1200 km of hydraulic works for roads.**  
**More than 50 hydraulic studies for road and railway bridges.**



*Channeling of the Vicario and Mitre Streams - Posadas, Misiones*



*Riverbank Line Definition - Villa General Belgrano, Córdoba*



*Project of Retention Ponds Juárez Celman Highway. Córdoba*



# 4 CLIENTS

THEY  
TRUSTED US



**JOSEMARIA**  
lundin mining



**JPL**  
Jet Propulsion Laboratory



**VN** Vialidad Nacional



**VISTA**  
OIL & GAS



ENTIDAD BINACIONAL  
**YACYRETA**



CONSEJO FEDERAL  
DE INVERSIONES



Pan American  
**ENERGY**



abertis



UNIVERSIDAD  
NACIONAL  
DE LA PLATA



Energía Argentina S.A.



ecología urbana



TECHINT



ARAUCO





AV. JULIO A. ROCA 610 - 6th Floor - CABA

ARGAÑARAZ Y MURGUIA 3849 - CÓRDOBA

[www.consularsa.com.ar](http://www.consularsa.com.ar)

