



# Brand presentation



**SPINAGRO SPINALCOOL**



**SÔZÉ**  
SUSTAINABLE  
CACHAÇA



# About us



We are a pre-sprouted sugarcane seedling company, born in 2017 from the desire of a young couple to start their own business. At the time, Rodrigo and I did a very thorough market study to get the ball rolling, and we saw that the planting of PSS was an inevitable trend.

We have been concerned about the environment from the very beginning, and in our first project, we already captured rainwater for our production. We had the region's heavy rainfall on our side, and we designed the roofs of the production area and greenhouses in such a way as to capture the greatest possible volume of rainwater. We started using biological products in our pest control in the sugarcane fields, since I had specialized in integrated pest management for my graduation. Thus, as a natural consequence, we reduced the use of chemical nutrition, using chicken farming residues from the neighboring property, owned by Rodrigo's parents, to fertilize our sugarcane field. Things fit so well together, made so much sense, and gave us such excellent results, that we thought: why not do this with everything? So, we planned and implemented the circular economy in the property, making use of all the waste produced here, of what could have been previously discarded, and increasing our income. On top of all that, we got an extra bonus for having a near-zero environmental impact.



# Traceability



The seedlings we produce are all tracked, from their planting field, up to their lot's final issuing. That provides us with data on our entire cachaça production process, as they originate from the same fields.

Thus, in addition to the PSSs inner characteristics, like variety, harvesting date, and maturation, we also evaluate and measure the amount of water and biological inputs used in the production. We make that information available to customers so they know about the entire seedlings and cachaça production cycle, from the sugar cane fields to the final product! Totally susTRACKable!

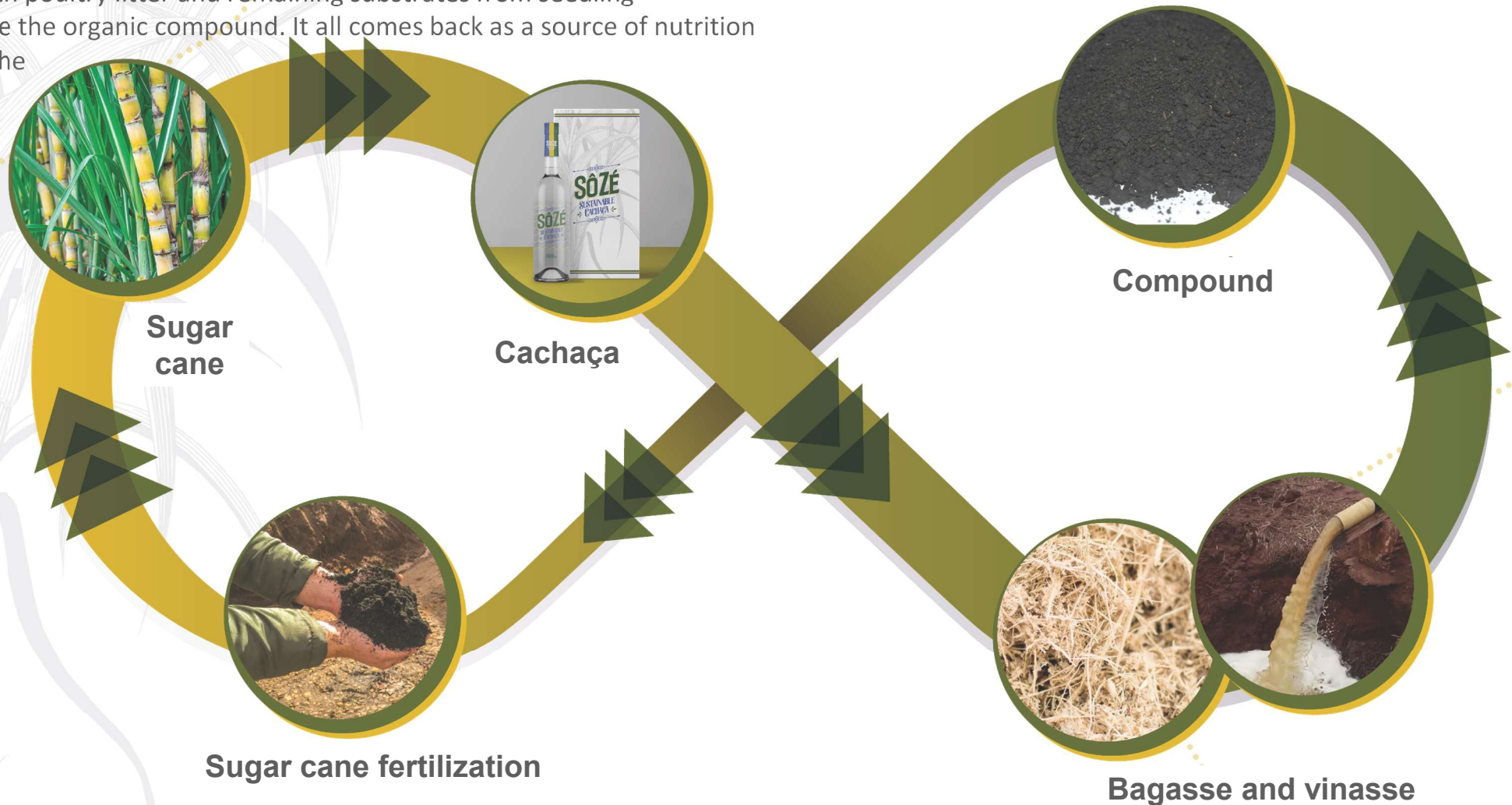
We meet all social and environmental requirements, validated by the certifications we obtained in 2021, and we are proud to say that our products are sustainable, socially responsible, and environmentally correct.





# Circular Economy

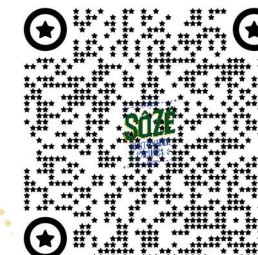
The cachaça manufacturing process generates other residues, bagasse and vinasse, which together with poultry litter and remaining substrates from seedling production become the organic compound. It all comes back as a source of nutrition (fertilization) for the cane fields, and so the cycle starts again.



Complet process  
tracking on the labels

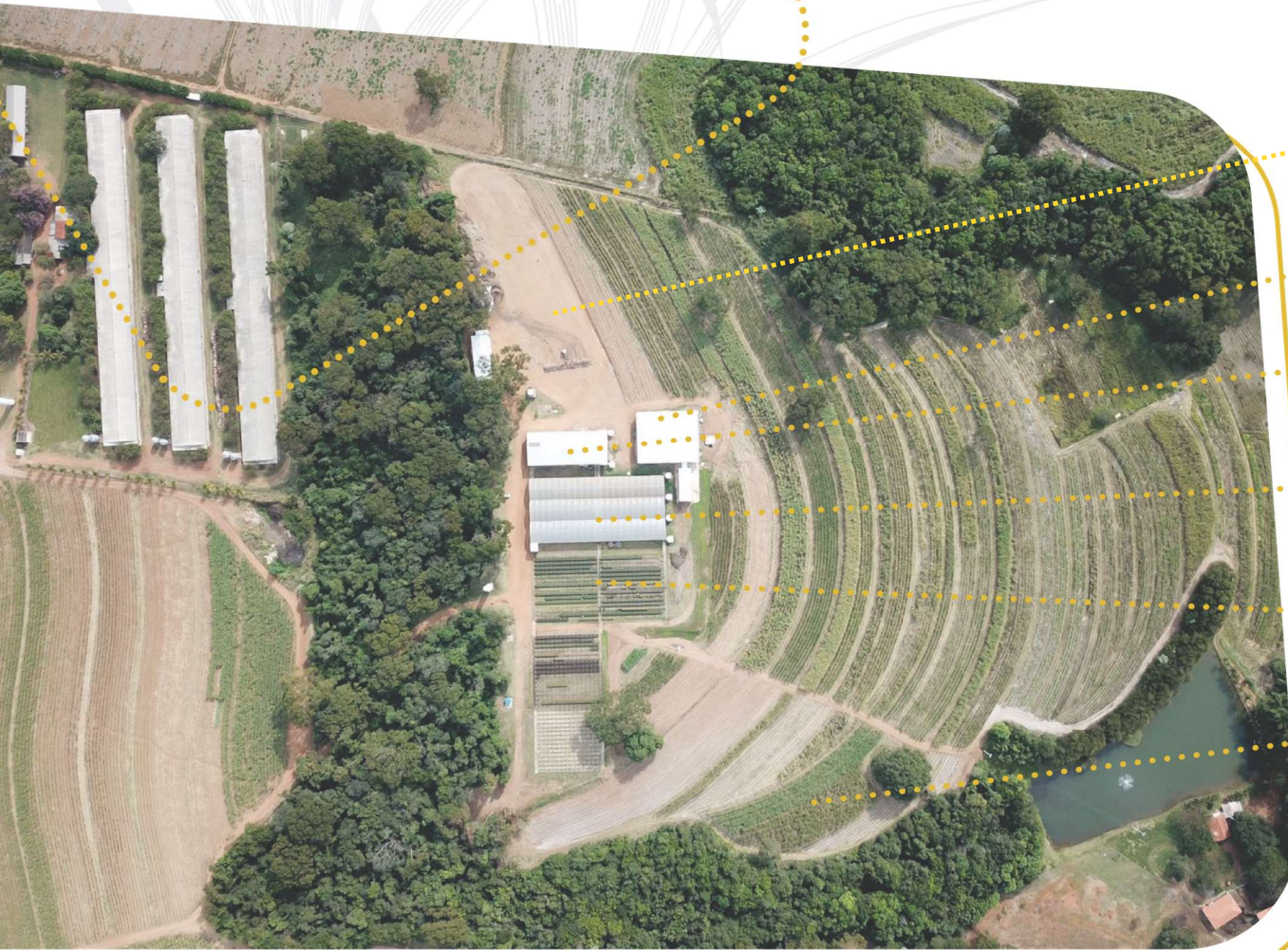


# Circular Economy





# How we are installed



Compost yard

Cachaça producing

PGB processing stall

PGB growth greenhouse

PGB hardening

Sugar cane fields



# Certifications



Certificate SGS BR21/10987

The management system of

**Rodrigo Spina ( Spinagro).**

Fazenda São Geraldo – S/N  
Rodovia Altino Arantes – KM 64 – CEP 14.319.899 -Zona Rural - Batatais -SP-BR  
has been assessed and certified as meeting the requirements of

**Bonsucro Production Standard  
For SMALLHOLDER FARMERS Version 1.0**

for the products detailed in the scope below

Product: MPB (Pre Sprouted Seedlings).  
Producer Rodrigo Spina (SPINAGRO), farm seedling nursery production of  
MPB.

Bonsucro Membership number BRA 0179

This certificate is valid from 7 June 2021 until 7 June 2024.  
Issue 1. Certified since 7 June 2021

The audit leading to this certificate commenced on 06/05/2021  
Previous issue certificate validity date was until



**Certified  
Bonsucro  
Member**





### Contact us

Laura Vicentini +55 16 99765.6059

Rodrigo Spina +55 16 99244.7072

E-mail: [spinagro@outlook.com](mailto:spinagro@outlook.com)

@spinagro

@sozecachaca

[www.spinagro.com.br](http://www.spinagro.com.br)