

Logística SDM





WELCOME TO SDM LOGISTICS!

Founded in 2015, our company's main goal is to go beyond the usual, delivering outstanding international logistics services. We do this by developing integrated and competitive transportation solutions, which are tailored according to the specific needs of each customer.

At SDM Logistics, our main commitment is to ensure that your shipment is carried out with priority and safety. Here are some of our differentials:



**QUALITY
ASSURANCE**



**AGILITY AND
EFFICIENCY**



**FLEXIBLE
SERVICES**



**COMPETITIVE
PRICES**



**TECHNOLOGY AND
INNOVATION**

WE OFFER THE PERFECT COMBINATION BETWEEN REGIONAL EXPERTISE AND GLOBAL REACH

Besides having extensive knowledge about the Brazilian export and import cultures, along with all the customs laws and regulations in force in our country, we are still present at a global level. By being part of the X2 Elite, one of the most respected international logistics networks, we are able to operate with all the modals in the main ports and airports worldwide, offering reduction of up to 20% of costs in comparison to other players in the market.



Member of:



OUR SERVICES

OCEAN FREIGHT

We offer flexible and high quality ocean freight solutions, which comprise both import and export operations. Through a line of containers that goes from standard models to special containers, such as: Flat Rack, Open Top, Platform, Flexitank and Isotank, we are equipped to transport any type of cargo safely and efficiently.



AIR FREIGHT

Our partnerships with freight forwarders and airlines at a global level enable us to offer complete air import and export solutions. We will take care of your shipment with priority, finding the best routes so that it arrives at your destination quickly through commercial or dedicated flights.

LAND TRANSPORTATION

Through our modern fleet of trucks equipped with GPS tracking system, we collect and deliver dangerous and conventional cargo (via DTA, DTC and LTL) across all the Brazilian territory. Our coverage also extends to all of South America, with import and export services between Brazil and countries such as Chile, Argentina, Uruguay and Paraguay.



WAREHOUSING

Our customers have access to a complete storage system, made up of general warehouse, bonded warehouse, REDEX and EADI. We also conduct stuffing, weighing and pre-stacking services, covering all the steps necessary for the proper functioning of their logistics chain.

SPECIALISTS IN PROJECT CARGO

With vast experience in this area, we carry out our customers' projects comprehensively. After identifying the challenges of each project, we are able to create the best alternatives to transport any kind of oversized and/or non-standard cargoes.

We operate in the following areas:

LARGE
VOLUMES

SOLID
GRANULES

LIQUID
GRANULES

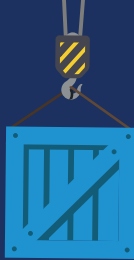
BREAK
BULK

HEAVY
LIFT

PROJECTS WITH
INTEGRATED
LOGISTICS

RO-RO
SHIPMENTS

CONTAINER DIMENSIONS AND MEASUREMENTS



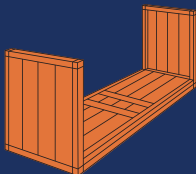
DRY

External measurements (mm)	20'	40'
Length	6.058	12.19
Width	2.438	2.438
Height	2.591	2.591
Maximum cargo weight (kg)	21.920	26.930



OPEN TOP

External measurements (mm)	20'	40'
Length	6.058	12.192
Width	2.438	2.438
Height	2.591	2.591
Maximum cargo weight (kg)	21.950	27.020



FLAT RACK

External measurements (mm)	20'	40'
Length	6.058	12.192
Width	2.438	2.438
Height	2.591	2.591
Maximum cargo weight (kg)	22.555	39.829



REEFER

External measurements (mm)	20'	40'
Length	6.058	12.191
Width	2.438	2.438
Height	2.591	2.591
Maximum cargo weight (kg)	27.490	29.480



**REGARDLESS OF
YOUR DEMAND,
COUNT ON SDM
LOGISTICS FOR
OUTSTANDING
SERVICES!**



Av. Monteiro Lobato, 9950
Sala 13 | Agenor de Campo
Mongaguá- SP | CEP: 11730-000



(13) 3446-2783



(13) 99773-1144



www.sdmlog.com.br



@sdmlog