

# PRODUCTS CATALOG

AGRIBUSINESS PRODUCTS AND RELATED

---



## FROM BRAZIL TO THE WORLD

---

**BTA - CONSULTORIA E INTERMEDIações DE  
NEGóCIOS NO COMéRCIO EXTERIOR EIRELI – EPP**

**2024**

**Website:** [www.braziltradeagents.com](http://www.braziltradeagents.com)

**E-mail<sub>1</sub>:** [rosemberg.bta@braziltradeagents.com](mailto:rosemberg.bta@braziltradeagents.com)

**E-mail<sub>2</sub>:** [braziltradeagents@gmail.com](mailto:braziltradeagents@gmail.com)

**Mobile Phone:** +55 81 9 8671-2215

**Telephone:** +55 81 3072-8122

.....

# PRODUCTS

## BRAZILIAN SUGARS

**01- SUGAR ICUMSA: IC-45, IC-150, VHP: 600 - 1200.**



## **SPECIFICATIONS:**

**Origin:** Brazil

**Icumsa:** White Crystal 45 RBU

**Polarization:** MIN. 99.8 % Degree Polarization (0Z)

**Moisture:** MAX. 0.04 % by weight

**Ash Content:** MAX. 0.04% by weight

**Invert Sugar:** MAX. 0.10 % by weight

**Average Size** 0.60 - 0.90 mm.

**Reducing Sugar** 0.03% Max by in Dry Mass

**Target M.A.:** 1.00 ñ 1.50 mm.

**Smell:** Free from smell

**Sediments:** MAX. 0.02% by weight

**Arsenic:** MAX. 1 PPM

**Pesticide:** MAX 2 PPM

**Copper:** MAX. 3 PPM

**Sulphur Dioxide:** 20 MG / kg max

**Pathogenic Bacteria:** NONE

**Coli-form Bacteria:** MAX. 10 CFU/10 gm

**E. Coli:** NONE

**Color Value:** Maximum 45

**Yeast & Mold:** MAX. 10 CFU/10 GM

# CEREALS & GRAINS

## 02- LONG GRAIN RICE: (0.5% BROKEN). (BRAZIL)



### SPECIFICATIONS:

**PRODUCT CHARACTERISTICS CERTIFICATION:** HUMAN CONSUMPTION

**LONG GRAIN:** (6.6 mm – 7.0 mm) 40%

**SHORT GRAIN:** (6.2 mm – 6.0 mm) 3%

**WHOLE GRAINS:** MINIMUM 60%

**SIZE OF THE BROKEN PARTS:** PIECES 5.0 - 8.0 mm MAXIMUM 1.5 %

**RICE HEAD SIZE:** PARTS 8.0 mm

**MAXIMUM RED / LOW GROUND NUCLEUS:** 0.0 %

**MAXIMUM YELLOW GRAINS:** 0,20 %

**KERNELS CHALKY:** MAXIMUM 6.0 %

**MAXIMUM DAMAGED GRAINS:** 2.5 %

**MAXIMUM WHITE GLUTINOUS RICE:** 1.5 %

**GRADE OF EXTRA WEEL GRINDED**

**PACKING:** BAGS 50 KG OR ACCORDING TO CLIENT CLAIM

**RICE QUALITY:** PURITY, UNMIXED.

**EXPIRE DATE:** 12 MONTHS FROM THE PRODUCTION DATE.



### 03 - WHEAT MILLING, WHEAT HARD RED, WHEAT SOFT. (ARGENTINA & USA)



#### **SPECIFICATIONS:**

**PRODUCT:** WHEAT MILLING GRAINS

**MOISTURE:** 13,5 % MAX

**PROTEIN CONTENT:** 11,5 % MIN

**DAMAGE GRAINS:** 2% MAX

**ORGANOLEPTIC:** BRIGHT, CLEAR APPEARANCE, NATURAL SMELL AND COLOR

**TEST WEIGHT:** 74 KG/HL MIN

**SHRUNKEN AND BROKEN KERNELS:** 5.0% MAX

**INSECT DAMAGED KERNELS:** 1.5% MAX

**ERGOT:** 0.05% MAX

**SPROUTED KERNELS:** 2.0% MAX

**TOTAL DAMAGED KERNELS:** 6.0% MAX

**EDIBLE GRAIN OTHER THAN WHEAT:** 2.0% MAX

**ORGANIC MATTER (OTHER THAN EDIBLE GRAINS OF CEREAL):** 1.5% MAX

**INORGANIC MATTER:** 0.05% MAX

**FILTH:** 0.1% MAX

**LIVE INSECT:** NIL

## 04 - SOYBEAN GRAINS GMO & NON-GMO. (BRAZIL, & USA)



### **SPECIFICATIONS:**

**GRADE:** GMO YELLOW SOYBEAN #2

**PROTEIN:** 32,5 MINIMUM

**OIL CONTENT BASIS:** 18,5% MINIMUM

**MOISTURE:** 13,0% MAXIMUM

**FOREIGN MATTER BASIS:** 2,0% MAXIMUM

**DAMAGED BEANS BASIS:** 8,5% MAXIMUM

**HEAT DAMAGED BEANS BASIS:** 3,0% MAXIMUM

**BURNED:** 1,0% MAXIMUM

**MOULDY:** 6,0% MAXIMUM

**BROKEN BEANS:** 30% MAXIMUM

**GREENISH BEANS:** 8,0% MAXIMUM

**GERMINATING GRAIN:** FREE

**CONTAMINANTS:** FREE

**LIVE INSECTS:** FREE



## 05 - SOYBEAN MEAL GMO & NON-GMO - (BRAZIL, & USA)



### **SPECIFICATIONS:**

**PRODUCT:** GMO SOYBEAN MEAL #2

**PROTEIN:** 46% MINIMUM

**FAT:** 2,0% MAXIMUM

**MOISTURE:** 13,0% MAXIMUM

**FIBER:** 7,0% MAXIMUM

**SAND AND SILICA:** 2,0% MAXIMUM

**ASH:** 7,0% MAXIMUM

**UREASE ACTIVITY:** 0,5

**AFLATOXIN TOTAL:** 20 PPB MAXIMUM

**ALL DISCOUNTS WITH ALLOWANCE:** 1:1 FRACTIONS IN PROPORTION

**CONTAMINANTS:** FREE

**LIVE INSECTS:** FREE

**TOLERANCE:** AS PER PERTINENT CLAUSE OF GAFTA'S CONTRACT 119

## 06 - YELLOW CORN GMO & NON-GMO. (BRAZIL, & USA)



### **SPECIFICATIONS:**

**MOISTURE:** 14 % UP +

**PROTEIN:** 8,0% MINIMUM

**BROKEN GRAINS:** 3,0% MAXIMUM

**ASH:** 1.5 % MAXIMUM

**FAT:** 3.5 % MINIMUM

**FOREIGN MATTER:** 1,5% MAXIMUM

**DAMAGED KERNEL:** 1,0% MAXIMUM

**GRAIN OTHER COLOURS:** 2,0% MAXIMUM

**AFLATOXIN:** TOTAL 20 PPB MAXIMUM

**GERMINATING GRAIN:** FREE

**CONTAMINANTS:** FREE

**LIVE INSECTS:** FREE

**ADMIXTURE:** 2.5 % BASIS

**STARCH CONTENT:** 60-68 % AVERAGE

**WEIGHT/BUSHEL:** 52 LBS/BU. AVERAGE

**RADIATION:** NONE



## 07 - 100% BRAZILIAN ARABIC & ROBUST COFFEE:



**PRODUCTION:** IN THE SOUTHERN MOUNTAINS OF THE STATE OF MINAS GERAIS

**ALTITUDE:** FROM 1,000 1200 METERS

**REGION:** BRAZILIAN VOLCANIC

**BLEND:** A COFFEE WITH SWEETNESS, BODY AND BALANCED ACIDITY ARABIC SPECIES

### **EXPRESS:**

ARABIC COFFEE WITH SITAINER 16/17/18 ABOVE, WITH A DRINK STANDARD, MEDIUM TOAST SPECIALLY USED IN MACHINE ESPRESSO, OUR COFFEE SURPRISES BY THE ACHOCOLATED FLAVOR AND SWEETNESS, BALANCED ACIDITY AND AN UNFORGETTABLE AROMA.

- 1KG PACKING
- TOASTED GRAINS
- 100% ARABICA

### **TRADITIONAL:**

A 100% ARABIC COFFEE WITH SELECTED BEANS, THE TASTE OF BRAZILIAN COFFEE TOASTED AND GROUND IN ANYWHERE IN THE WORLD.

- PACK OF 500 GR OR 250 GR
- TOASTED AND GROUND
- GREEN BEANS – BAGS 60 KG.

## 08 - MANDIOC STRACH: (BRAZIL)



### APPLICATION:

#### FOOD INDUSTRY:

TAPIOCAS - CAKES - COOKIES - PIES - PUDDINGS - CHEESE BREADS - COLD AND ITS DERIVATIVES - REFRIGERATED BEEF INDUSTRY ICE CREAM INDUSTRY - FROZEN FOODS- CONFECTIONERY CREAM - MILK PRODUCTS INDUSTRY.

#### CHEMICAL INDUSTRY:

**TEXTILE INDUSTRY:** BIODEGRADABLE PACKAGING- PAPER INDUSTRY

**GLUES INDUSTRY:** MALTO DEXTRINAS - INDUSTRIA SIDERÚRGICA

**PAINTS INDUSTRY:** COSMETICS INDUSTRY- GLUCOSE SYRUP

## 09 - FOOD BASKET – (BRAZIL)



**PRODUCT:** SUPERMARKET FOODS & INDUSTRIES

**ORIGIN:** ARGENTINA, CHILE E BRAZIL

**MIN. ORDER:** 25.000 - FOOD BASKETS

**MAX. ORDER:** 2.000.000 - FOOD BASKETS

**CERTIFICATIONS:**

**CREATE YOUR OWN FOOD BASKET!**



## 10 - FRUIT POLPS & CONCENTRATES: (BRAZIL)



**ORIGIN:** BRAZIL

**PACKING:** In 220 KGS.

**QUANTITY:** MIN 50 MT – MAX 1,000 MT PER MONTH.

**FRUIT CONCENTRATES:** APPLE JUICE CONCENTRATE, PINEAPPLE JUICE CONCENTRATE, PEACH PUREE JUICE CONCENTRATE, STRAWBERRY PURE JUICE CONCENTRATE, RED GRAPE JUICE CONCENTRATE, CLEAR POMEGRANATE JUICE CONCENTRATE, LEMON JUICE CONCENTRATED, ORANGE JUICE CONCENTRATED, MANDARIN JUICE CONCENTRATED.

## 11 - BARLEY MALT & FEED ANIMALS – (BRAZIL, USA & INDIA)



### SPECIFICATIONS:

**Plump Kernel:** 92,3 %

**Protein:** 12 %

**Germination Energy (4 ml):** 96%

**Germinative Index (4 ml):** 7,8 %

**Steep out Moisture:** 43,6 %

**Malt Extract:** 80,5 %

**Soluble Protein:** 4,56<sup>c</sup>

**B-Glucan (ppm):** 64

**Diastatic Power (°L):** 116<sup>b</sup>

**α-Amylase (D.U.):** 58,3<sup>b</sup>

**Wort Color (ASBC Units):** 2,05

**Friability:** 88,5 %



## **12 – OATS & WHITE OATS – ANIMAL FEED. (USA & INDIA)**



### **SPECIFICATIONS:**

**Moisture:** 10,5 %

**Oil fat:** 5,9 %

**Crude Protein:** 9,5 %

**Crude fiber:** 10,5 %

**Sand silica:** 2.00 % to 2.50% max

**Urease activity (by ph. difference):** 30 units on eec method

**Metabolizable Energy (MJ ME/KG DM):** 11,6 %

**Neutral Detergent Fiber:** 33 %



## 13 – SORGHUM: (BRAZIL & USA)



### SPECIFICATIONS:

Water [g]	12.4
Energy	329
Energy [kJ]	1377
Protein [g]	10.62
Total lipid (fat) [g]	3.46
Ash [g]	1.43
Carbohydrate, by difference [g]	72.09
Fiber, total dietary [g]	6.7
Sugars, total including NLEA [g]	2.53
Calcium, Ca [mg]	13
Iron, Fe [mg]	3.36
Magnesium, Mg [mg]	165
Phosphorus, P [mg]	289

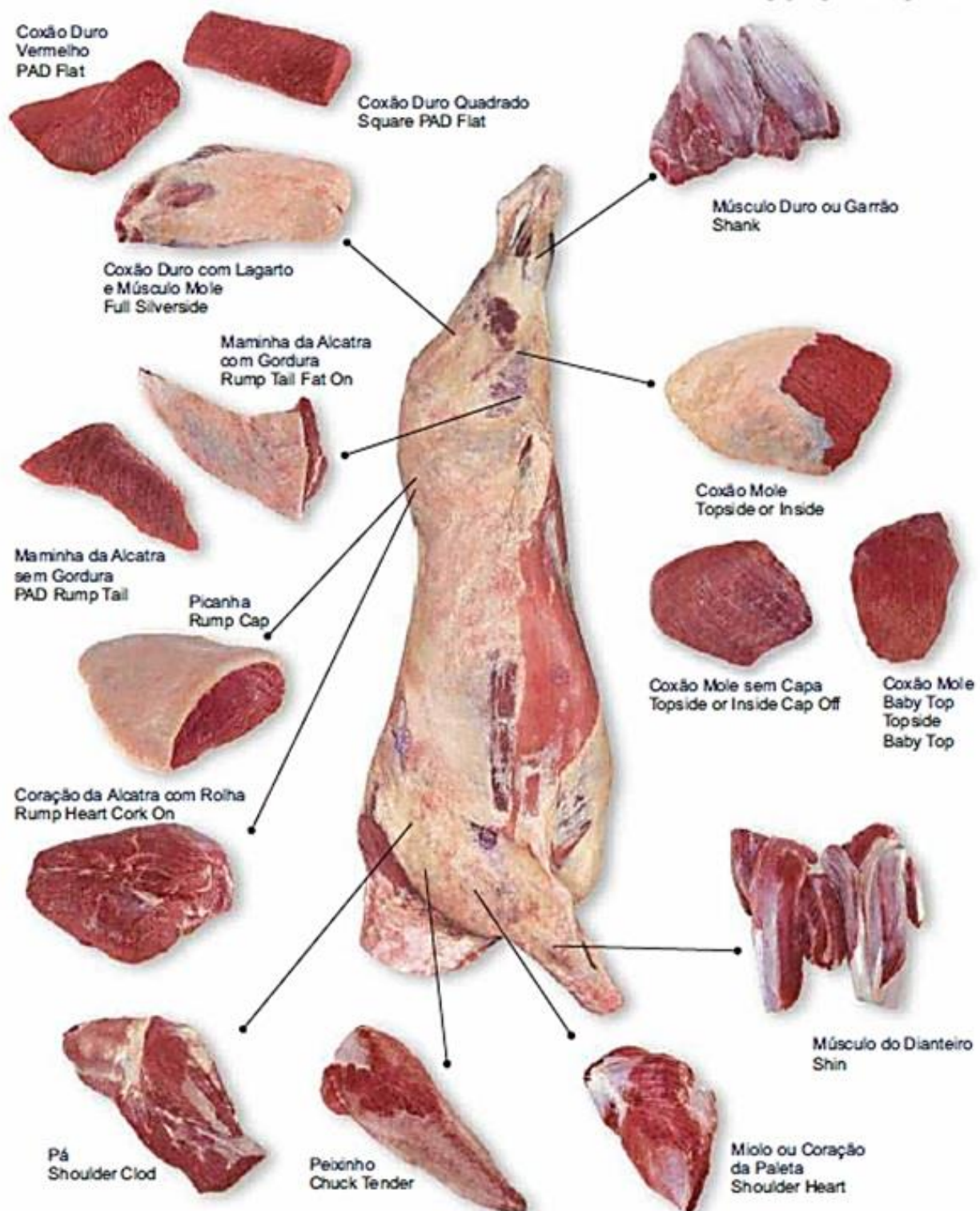
# ANIMAL MEATS

## 14 – FROZEN PORK MEAT: (BRAZIL)





## 15 – BEEF CUTS. (BRAZIL)





## 16 – JERKED BEEF & DRIED SALTED BEEF. (BRAZIL)



### NUTRITION INFORMATION

#### Hindquarter

NUTRITIONAL INFORMATION - Portion 30g		
Amount per Serving		DV(%) (*)
Energy/Calories	50 Kcal = 210kJ	2
Carbohydrates	0.0 g	0
Protein	6.6 g	9
Total Fat	2.6 g	5
Saturated Fat	1.1 g	5
Trans Fat	0.0 g	(**)
Dietary Fiber	0.0 g	0
Sodium	1566 mg	65

(\*) Daily values based on a diet of 2,000 kcal or 8400 kJ. Your daily values may be higher or lower depending on your energy needs.

(\*\*) Reference daily value not established

#### Forequarter

NUTRITIONAL INFORMATION - Portion 30g		
Amount per Serving		DV(%) (*)
Energy/Calories	37 Kcal = 155kJ	2
Carbohydrates	0.0 g	0
Protein	6.9 g	9
Total Fat	1.0 g	2
Saturated Fat	0.3 g	1
Trans Fat	0.0 g	(**)
Dietary Fiber	0.0 g	0
Sodium	1563 mg	65

(\*) Daily values based on a diet of 2,000 kcal or 8400 kJ. Your daily values may be higher or lower depending on your energy needs.

(\*\*) Reference daily value not established

#### Side cut

NUTRITIONAL INFORMATION - Portion 30g		
Amount per Serving		DV(%) (*)
Energy/Calories	67 Kcal = 281kJ	3
Carbohydrates	0.0 g	0
Protein	6.4 g	9
Total Fat	4.6 g	8
Saturated Fat	1.8 g	8
Trans Fat	0.3 g	(**)
Dietary Fiber	0.0 g	0
Sodium	2355 mg	98

(\*) Daily values based on a diet of 2,000 kcal or 8400 kJ. Your daily values may be higher or lower depending on your energy needs.

(\*\*) Reference daily value not established

## 17 - LIVE CATTLES: (BRAZIL)



**ORIGIN:** BRAZIL

**PRODUCT:** LIVE CATTLE

**THE QUANTITY AVAILABLE:** 15.000 ANIMALS EVERY 50 DAYS.

**ANGUS AND THEIR ANGUS MESTIZOS** WITH AVERAGE WEIGHT IN THE PORT OF 250 KG;

**ZEBU CROSSBRED** WITH AVERAGE WEIGHT IN THE PORT OF 300 KG;

**ZEBU CROSSBRED FATTENED OX** WITH MEAN WEIGHT OF 500 KG IN PORT;



# FISHES & SEA FOODS

## 18 - FISHES AND SEA FOODS (CHILE & ARGENTINA).





# LUMBERS & LOGS

## 19 - BRAZILIAN LUMBERS: (BRAZIL)



## 20 - PELLETS: (BRAZIL)



# PETROLEUM PRODUCTS

## 21 - PETROLEUM PRODUCTS: (RUSSIA & SAUDI ARABIA)



**NOTE: BTA** is the Seller's Representative of the above major commodities and we are ready to inform quotations for most of the listed products, except for some that, due to fluctuating dollar and crop conditions, we therefore depend on the release of quotas.

For this reason, we will need the purchasing company or its legal representative to register by means of our website:

**<http://www.braziltradeagents.com/fale-conosco.php>**, where they can send us the details of the purchase order and later receive a return of prices and procedures as soon as possible.