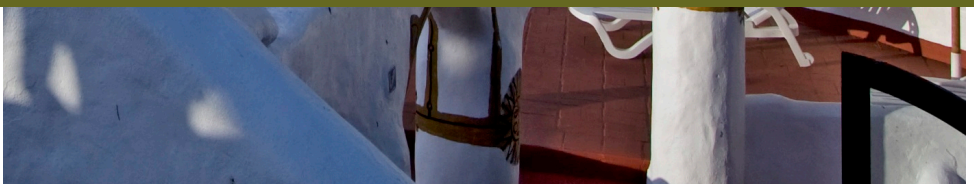




**plasters and special mortars**



## **WATER PLUG**

*rais plug*

## **PLASTERS**

*plastocal*

*emplascem*

*emplais interiores renovación*

*emplais exteriores*

*emplais interiores*

## **MICRO-CONCRETE WITHOUT SHRINKAGE**

*hormifluis*

*hormigrout*

*hormitix*

## **REFRACTORY MORTARS**

*refracmor*

## **LAYING MORTARS**

*hormipavi fast*

*duroasfalt*

## **REPAIRING MORTARS**

*moris*

*moris capa fina*

*teais alisador monocapas*

*moris inhibidor*

*teais baches*

## **GROUTING MORTARS**

*morpi base cal*

## **SELF-LEVELING MORTARS**

*morfluis*

## **REHABILITATION MORTARS**

*rocamol prefabricados*

*rocamol rústico*

## **QUICK SETTING MORTARS**

*teais recrecidos R35*

*cemrais*

## **INDOOR SELF-LEVELING SCREED**

*panis*

## **ANTI-CORROSIVE PASTE**

*protecor N*

## **SPECIAL MORTARS**

*capilais*

*morsis recrecidos*

*Learn more about our full range of products*

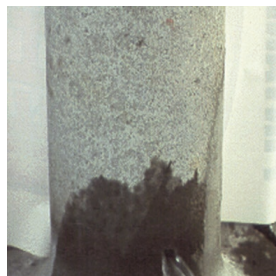
[www.teais.es](http://www.teais.es)

## **ultra fast cement for water leaks sealing**

### **rais plug**

**Rais Plug** is an ultra fast setting cement that can seal water leaks immediately.

This product is used to seal water leaks in basements concrete walls , elevator pits, masonry, rocks, etc, as a previous treatment to waterproofing, allowing to the entry of water and making the subsequent waterproofing works with suitable products as Cepis or Cepis Super.



Packaging: 5 kg, 20 kg  
Consumption: According to use

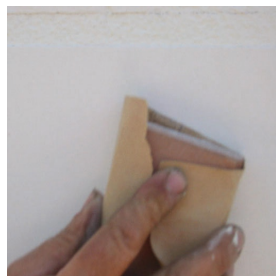
ultra fast cement

## **lime plaster, special for plastering**

### **plastocal**

**Plastocal** consists of a powder product. When mixed with water, it forms an ideal paste used for plastering, smoothing and eliminating cracks and paint that comes off, both in interiors and exteriors, both on horizontal and vertical supports.

It is used to eliminate all kinds of irregularities so as to prepare supports before painting them, both in interiors and exteriors. It is appropriate for levelling of renders, for eliminating cracks and fissures on walls and ceilings.



Packaging: 15 kg, 20 kg  
Consumption: 1,5 kg/sqm in 1 mm layer

plasters

# emplascem

## high adherence plaster for regularizing tile surfaces

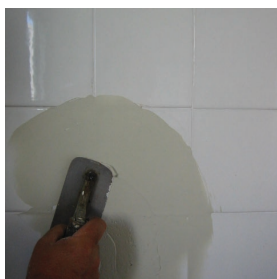


*Emplascem is a two-component product in powder and liquid shape which are made each other achieving a plaster with thixotropic consistency.*

*Is used for regularizing surfaces with bad adherence such as tile, brick, glazed, chipboard and several supports that want to be homogenized.*

### Surface preparation:

*The support must be firm, free of greases, oils or any substance that may pollute the surface and well dry. Concretes and mortars must be cured at least for 28 days.*



### Application:

*-Mix the liquid component manually or mechanically with the powder until obtaining a thixotropic paste with consistence.*

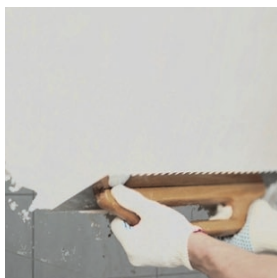
*- The mixture must be done manually or by a low-revolution electric mixer (300-500 rpm).*

*- Let the dough rest from 2 to 5 minutes before using.*

*-Apply with a stainless- steel trowel on the clean and dry support giving a thin first layer to cover all joints of the pieces.*

*- Let it dry and apply the finishing layer that can be sanded once it had hardened to remove smalls shapes made for the trowel.*

*- Let it dry before painting, wallpapering, etc.*



- \* High adherence
- \* High thixotropy
- \* Easy to apply
- \* High Strength
- \* Thin texture



*Packaging: 12 kg, 25 kg*

*Consumption: 1,5 to 2 kg/sqm*



## ***powder plaster for indoor supports***

**emplais  
int. renovación**

**Emplais interiores renovación** is a solid powder product that when it is blended with water becomes in plastic paste suitable for filling, specially for damaged paints or gotelé painting eliminating cracks and flakings on walls and ceilings. Only for interiors.

To eliminate unevenness in the surfaces to paint on. Only for interiors. For levelling in renders. In the elimination of cracks.

In all works that requires a fast finish.

Packaging: 4 kg, 18 kg

Consumption: 1 kg/sqm in 1 mm layer



plasters

## ***powder plaster for outdoor and swimming pools***

**emplais  
exteriores**

**Emplais exteriores** is a powder product based in cement to be mixed with water so as to form a plastic paste used for plastering, whitewash cracks and chippings on walls and ceilings, both indoor and outdoor.

Used so as to eliminate irregularities on surfaces to be painted afterwards (indoor and outdoor), to level rendered supports as well as to eliminate cracks and fissures.

Packaging: 1 kg, 4 kg, 20 kg

Consumption: 1,5 kg/sqm in 1 mm layer



plasters

## emplais interiores

### indoor plastering



*Emplais* is a powder product based in cement to be mixed with water so as to form a plastic paste used for plastering, whitewash cracks and chippings on walls and ceilings, for interior use.

It is used so as to eliminate irregularities on surfaces to be painted afterwards (in interiors), to level rendered supports as well as to eliminate cracks and fissures.



Packaging: 1 kg, 4 kg, 18 kg  
Consumption: 1 kg/sqm in 1 mm layer

## hormifluis

### fluid micro-concrete without shrinkage



*Hormifluis* is a micro-concrete based on cement, very fluid, with compensated retraction and slightly expansive, particle-size structures from 0 to 2 mm that offers high mechanical resistances once hardened.

It is used for filling by pouring under support plates, filling of machine supports, bridge bearings and cranes, anchoring of metallic elements such as metallic supports, bolts, poles. Anchorings of concrete poles, pillars on precast construction, filling of cracks, cavities, etc.

The application thickness must be from 10 to 30 cm.



Packaging: 25 kg  
Consumption: 20 kg/sqm in 1mm layer

## **fluid micro-concrete without shrinkage special for high strength work**

### **hormigrout**

**Hormigrout** is a micro-concrete of high resistance and great mechanical properties.

It is suitable for machines anchoring, levelling of machine platforms, support of bridges and cranes, filling by pouring under support plates, elements of metallic anchorages, filling of cracks and cavities into the concrete masses.

Allows application thicknesses up to 8 cm.



Packaging: 25 kg  
Consumption: 2 kg/sqm in 1 mm layer



micro-concrete without retraction

## **thixotropic micro-concrete without shrinkage**

### **hormitix**

**Hormitix** is a micro-concrete based on cement, thixotropic and without retraction. Particle size from 0 to 3 mm. Once it becomes hardened offers high mechanical resistances.

In the reinforcement and reparation of micro-concrete structures. Damage reparation caused by movement.

Reinforcement and reparation on pavements areas made of concrete mainly in areas in no horizontal situation such as ramps, areas near to waterings, etc.

Apply it with thickness between 20 and 50 mm.

Packaging: 25 kg  
Consumption: 2 kg/sqm in 1 mm layer



micro-concrete without retraction

## refracmor

### ***mortar directly resistant to high temperatures and fire***



*Refracmor is powder product which mixed with water and set, reduces heat transfer and resists direct fire, it's formulated based on refractory cement and specially selected arids.*

*In refractory bricklaying for lifting smokestacks, barbecues, ovens. For coating combustion chambers, boilers, smokestacks...etc.*

*Plasters in high temperature ambients.*



*Packaging: 5 kg, 25 kg  
Consumption: 2 kg/sqm in 1mm layer*

## duroasfalt

### ***micro-concrete for repair of agglomerate asphalt floors***



*Duroasfalt is a micro quick-drying concrete and adequate strength, consisting of cementitious binders, fibers, aggregates compensated grain, pigmented in black color.*

*It is used to make repairs on asphalt floors.*



*Packaging: 25 kg  
Consumption: 20 kg/m2 for each 1cm thickness*



## **fast hardening mortar for road maintenance works**

### **hormipavi fast**

**Hormipavi fast** is a mortar based on cement, one-component and pre-dosed for fixing and support. It is made in dark colour in order to merge the asphaltic surface.

It is used for fixing manhole, concrete reparations, urban furniture anchoring, reparation of joints in roads and for fixing lights in the airports runways.



Packaging: 25 kg  
Consumption: 2 kg/l



repair mortar

## **thixotropic mortar for reparation without shrinkage**

### **moris**

**Moris** is a thixotropic mortar without retraction, cement based, with selected arids, additives and fibers which, mixed with water becomes a restoration mortar suitable for many applications.

It's used on flakings, voids, cracks and blowholes repairs on concrete. Concrete surfaces regularization which requires good mechanical resistance and adhesion. Concrete repairs that have been broken by reinforcement corrosion. In wire anchorings, wood, profiled steel rails, etc. Protection of metal armors, concrete reparings, passive cracks sealing.



Packaging: 1 kg, 5 kg, 25 kg  
Consumption: 20 kg/m<sup>2</sup> per 1cm thickness



repair mortar

## **moris capa fina**

### ***repairing mortar on thin layer***



*Moris special mortar for rehabilitating and repairing of concrete structures, based on special cements and great resistance and adherence bonders.*

*It is used for repairing of structures on thin layers, repairing and leveling of concrete structures, low thickness repairs, edges repairs, reprofiling of joints edges, etc*



*Packaging: 25 kg  
Consumption: 1,8 kg/sqm in 1mm layer*

## **teis alisador monocapa**

### ***special mortar for smoothing scratched one-coat mortar***



*Teais alisador monocapa is a mortar specially designed for smoothing one-layer mortar and can be painted on subsequently.*

*The main application is the smoothing and levelling of scraped one-layer mortar.*



*Packaging: 25 kg  
Consumption: 1,8 kg/sqm in 1mm layer*

## ***repair mortar with incorporated corrosion inhibitor, no primer required***

### **moris inhibidor**

**Moris Inhibidor** is a mortar based on cement, selected aggregates, special additives and corrosion inhibitor.

Ready to mix only with water.

It is used to repair concrete affected by corrosion on armours, in all types of structures, pillars, beams, balconies, tiles, slabs, etc.



Packaging: 25 kg

Consumption: 20 kg/sqm in 1cm thickness

repair mortar

## ***pothole repairing over ground and screeds***

### **teais baches**

**Teais baches** is a pothole repairing system both concrete pavements and natural floorings made of a cement-based binder with quite fluid consistence that can reinforce a filling of aggregates with particle size from 20 to 40 mm.

is used to make quick, firm and affordable fillings, on parking concrete floorings, paths, industrial areas, etc...



Packaging: 25 kg

Consumption: Gravel 18 kg/lit, Mortar 14 kg/lit

repair mortar

## morpi base cal

### laying and grouting lime mortar



*Morpi base cal* consists of a specially designed mortar used for laying and grouting purposes in masonry in general such as blocks, brick slips and stone. It is based on special conglomerants, selected aggregates, mineral fillers, additives amongst others.

It is used in masonry made of concrete blocks and brick slips. Also for waterproofing walls made of brick slips. It is used for joints in walls and facades made of stone



Packaging: 25 kg  
Consumption: 10 to 15 kg per sqm of wall

## morfluis

### self-leveling screed



*Morfluis* is a powder product based on cement that contains several additives which provides to it special properties for making self-leveling screeds on pavements until 30mm.

The product is ideal for regularization screeds both indoors and outdoors.



Packaging: 25 kg  
Consumption: 1,8 kg/sqm per mm of thickness

## ***crushed rock with rustic finishing for natural stone refurbishment***

**rocamol  
rústico**

**Rocamol Rústico** is a product based on crushed rock, cement, lime, additives, colourings that is used to covering imitating natural stone with rustic texture and also to imitate stone in construction refurbishment.

It is used for imitating texture and colour in existing stone that require refurbishment or to render single coat, combined or complementary.



Packaging: 25 kg

Consumption: 18 to 20 kg/sqm in 10 mm layer



restoration mortars

## ***crushed rock for the realization of precast imitation of natural stone***

**rocamol  
prefabricados**

**Rocamol Prefabricados** is a product based on crushed rock, cement, lime, additives, colourings used to make prefab or molded pieces.

It is used to the realisation of ornamental pieces, moulds replacement and recovering, sculpture, etc... Both new building and refurbishment.



Packaging: 65 kg

Consumption: 1,8 à 2,0 kg/l of volume to be filled



restoration mortars



## teais recrecidos R35

### special cement for screeds



*Teais Recreidos R35 is used for made concrete floors and screeds which requires a fast commissioning.*

*Powdered and mixed with Arcuais in the following proportions: 1: 4 or 1: 5*

*The product has a high yield because it mixes with an agglomerate.*



*Packaging: 25 kg*

*Consumption: According to the mixtures*

## cemrais

### quick setting mortar



*Cemrais is a product presented as a fast setting cement which mixed with water is used as instant seal, plastering waterways from cracks, fissures or openings formed on concretes and other cement and rigid supports.*

*Clog concrete pipes instantly. Reassemble broken pipes (even under load), repair water pipes, galleries and basements, gas leaks, seal concrete slabs, water tanks, swimming pools, make small repairs in manholes or water pipes that have to be put into service quickly.*



*It is not suitable for clogging waterways. For this application we recommend Rais.*

*Packaging: 5 kg, 20 kg, 22 kg*

*Consumption: 2 kg/m<sup>2</sup> in 1 mm layer*

## ***self-leveling screed for indoor slabs to be coated***

**panis**

**Panis** is a powder product, which mixed with water, becomes a self-leveling screed, specially made to regulate the floor surface area, leaving them smooth, with an appropriated planimetry to receive multiple coatings.

It is used for pavement levelings, in thin and medium layer, onto open pore holders like non-polished mortar and concrete. Training support plane for the placement of floor coverings such as ceramic tiles, stoneware tiles, marbles, natural stones, carpets, parquet, synthetic floors, etc.

Packaging: 4 kg, 25 kg

Consumption: 1,5 kg/m<sup>2</sup> in 1 mm layer



self-leveling screeds

## ***protective coating and adhesion for concrete reinforcement rust***

**teais  
protector N**

**Teais Protector N** is a two component product based on special microtextured resins and additivated with corrosion inhibitors.

It is used as a protective layer for reinforcements in structure repair works, and provides an adequate adhesion layer over concrete and armor before applying repair mortars (Moris, Homifluis, Hormitix, etc..)

Packaging: 1.5 kg, 8 kg

Consumption: 0,3 to 0,4 l/sqm



anti-corrosion

## morsis recrecidos

### *special mortar for regularization layers on slabs*



*Morsis recrecidos* is a mortar based on cement and quartz aggregates with a compensated particle-size. High workability and thixotropy.

It is used for the realization of regularization layers both in horizontal planes and inclined. On concrete floors which requires a regularization, on waterproofing systems as a protection on terraces or decks. It can stand as a finish doing the necessary contraction joints or be cladded with slabs.

Can remain as a finish by making the necessary contraction joints, or be clad in tiles.



Packaging: 25 kg  
Consumption: 2 kg/sqm in 1 mm layer

## capilais N

### *mortar contributing to the cleaning of moisture by capillarity*



*Capilais* consists of a specially designed mortar used to clean facades and walls that are affected by rising dampness, both in interiors and exteriors.

By its characteristics it promotes the evaporation of the moisture of the facing and its transpirability.

Ideal for application in addition to our capillary injected capillary blocking system, Teais Capi C.



Packaging: 25 kg  
Consumption: 20 kg/sqm in 20 mm layer