

pb-studio



We are a Uruguayan architecture firm that provides services to various clients around the world, primarily from the US. We have successfully completed dozens of projects with many repeat clients by combining imaginative, innovative designs with advanced technical know-how.

MISSION

PB-Studio was born from the idea of providing high-quality architectural services efficiently, adapting to the specific needs of each project. With the client as the central pillar of our approach, we guide them through every stage of the design process to develop, capture, and materialize each proposal.

VISION

Our goal is to position ourselves as a leading international architecture studio, offering direct services to clients, property owners, builders, and developers without the need for intermediaries. We are committed to expanding our knowledge in sustainable architecture and energy codes, while establishing collaborations with structural and MEP engineers to cover specialized areas. We aim to strengthen our presence in the United States while expanding our brand across Latin America and Uruguay.

CONTENT

- 04 WHO WE ARE
- 06 WHAT WE DO
- 07 FROM URUGUAY TO THE WORLD
- 08 HOW WE WORK
- 09 BIM PROCESS – ARCHITECTURE PROJECT
- 10 BIM PROCESS – PROJECT COORDINATION
- 11 BENEFITS OF CHOSING US
- 12 WHO TRUSTS US
- 13 HOW TO REACH US
- 14 OUR WORK

WHO WE ARE



Diana Pérez Martino

ARCHITECT, INTL. ASSOC. AIA
FOUNDER & DIRECTOR de PB-Studio

Diana graduated from ORT University in Uruguay with a degree in architecture and studied one year of the Master's in Architecture at the Dessau Institute in Germany. She has approximately 15 years of experience in the field.

She founded PB-Studio eight years ago after recognizing the untapped architectural talent in her native Uruguay and the country's unique ability to serve international clients in an agile and cost-effective manner.

Her previous experience includes a three-year stint at Humphreys and Partners Architects, the largest multifamily design firm in the United States. In previous roles, she coordinated all aspects of design, including conceptual and schematic design, construction documentation, and project administration.

PB-Studio's growing portfolio of clients is a testament to her ability to communicate effectively, manage complex projects, and lead teams of design professionals and technicians. She remains the head of the design team, as design is her true passion. Although she is personally involved in all aspects of the company and responsible for its creative direction, she believes that empowering and supporting her team is key to achieving success and client satisfaction.

In addition to her native Spanish, she holds certificates of proficiency in English and Portuguese, earned from the University of Cambridge and the Universidade Luterana do Brasil, respectively.

She holds an Italian passport and is an Italian citizen through her family heritage.

WHO WE ARE



Nicolás Piusi
SENIOR ARCHITECT

BIM MANAGER & SENIOR PRODUCTION MANAGER

Nicolas, also a UDELAR graduate, holds a Master's Degree in BIM Management. He swiftly mastered the unique aspects of US architecture, including construction systems, building codes, and imperial units—areas that were new not only to him but to most of the team. His deep understanding of BIM methodology, coupled with his organizational and focused mindset, initially placed him in our Production Team. He has since advanced to become our BIM Manager, where he continues to excel.



Luis Aular
SENIOR ARCHITECT

PROJECT ARCHITECT & VISUALIZATION LEADER

A Venezuelan architect who joined us 18 months ago, Luis quickly adapted and moved from our Production Team to become the Visualization Leader in our Design Team, driven by his passion for design and visual representation. He also serves as our Code Expert, pursuing IRC and IBC certifications to deepen our knowledge of US building codes and minimize reliance on external resources. He shares his expertise through weekly workshops, benefiting the entire studio.



Matías Levy
SENIOR ARCHITECT

PROJECT MANAGER & DESIGNER

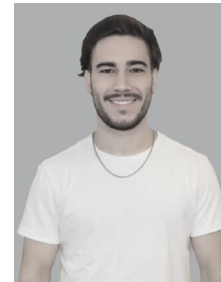
Matias, a licensed architect from Universidad ORT, the same institution where Diana graduated, has consistently risen to every challenge presented to him. His methodical and consistent approach has made him one of the cleanest BIM modelers in our Production Team, earning also the role of Project Manager.



Luis Rivera
ARQUITECTO SENIOR

PRODUCTION DESIGNER

Another talented architect from Venezuela, Luis joined our team 18 months ago. With a background as a Revit Professor, he is a flawless BIM modeler and our go-to expert for resolving any Revit-related challenges. His knowledge and experience make him an invaluable resource, inspiring the rest of the team to continually improve their skills.



Maximiliano Ren
ASISTENTE DE ARQUITECTO
DISEÑADOR

DESIGNER

An advanced architecture student at UDELAR, Maximiliano is a key member of our Design Team. He has developed expertise in 3D modeling using SketchUp, rendering with 3D Max, and creating visually appealing 2D designs in AutoCAD and Photoshop. His skills contribute significantly to the team's creative output.



Alexander Ellis
CTO
CEO DE PINEAPPLE-LAB

CTO

Alexander, Diana's husband and owner of Pineapple-Lab, naturally acts as the CTO for PB-Studio, aligning technology with the studio's objectives. He is responsible for hardware acquisition and maintenance, network management, and web platform development, ensuring the team's functionality, security, and efficiency. His strategic technological vision contributes to the studio's success and growth.

WHAT WE DO

**ARCHITECTURE SERVICES**DESIGN

2D & 3D DRAFTING
SCHEMATIC DESIGN
3D MODELING
PHOTOREAL RENDERINGS
ANIMATIONS & 360 VR TOURS

PRODUCTION

PRODUCTION TEAM
BIM MODELLING
DESIGN DEVELOPMENT
PERMIT SETS
CONSTRUCTION DOCUMENTS
TAKE-OFFS

**LANGUAGES**

SPANISH (NATIVE)
ENGLISH (ADVANCED)
PORTUGUESE (INTERMEDIATE)

PROJECTS

SINGLE-FAMILY RESIDENTIAL
MULTI-FAMILY RESIDENTIAL
COMMERCIAL
HOSPITALITY
EDUCATION
ADDITIONAL DWELLING UNITS
RENOVATIONS

**CLIENTS/PARTNERS**

OWNERS
ARCHITECTS
ARCHITECTURE FIRM
INTERIOR DESIGNERS
LANDSCAPE ARCHITECTS
ENGINEERS
DEVELOPERS
CONTRACTORS

TOOLS

AUTOCAD
REVIT
SKETCHUP
3D MAX
VRAY
TWINMOTION
ADOBE PHOTOSHO
ADOBE ILLUSTRATOR
ADOBE AFTER EFFECTS

**ACQUIRED KNOWLEDGE**

IMPERIAL UNITS
VARIOUS CONSTRUCTION SYSTEMS
(WOOD FRAME, STEEL FRAME, CONCRETE, MASONRY)
US BUILDING CODE (IBC & CBC)
LOCAL ZONING ORDINANCES



+8

YEARS

+15,360

HOURS WORKED

+162

CLIENTS

+18

COUNTRIES

+856

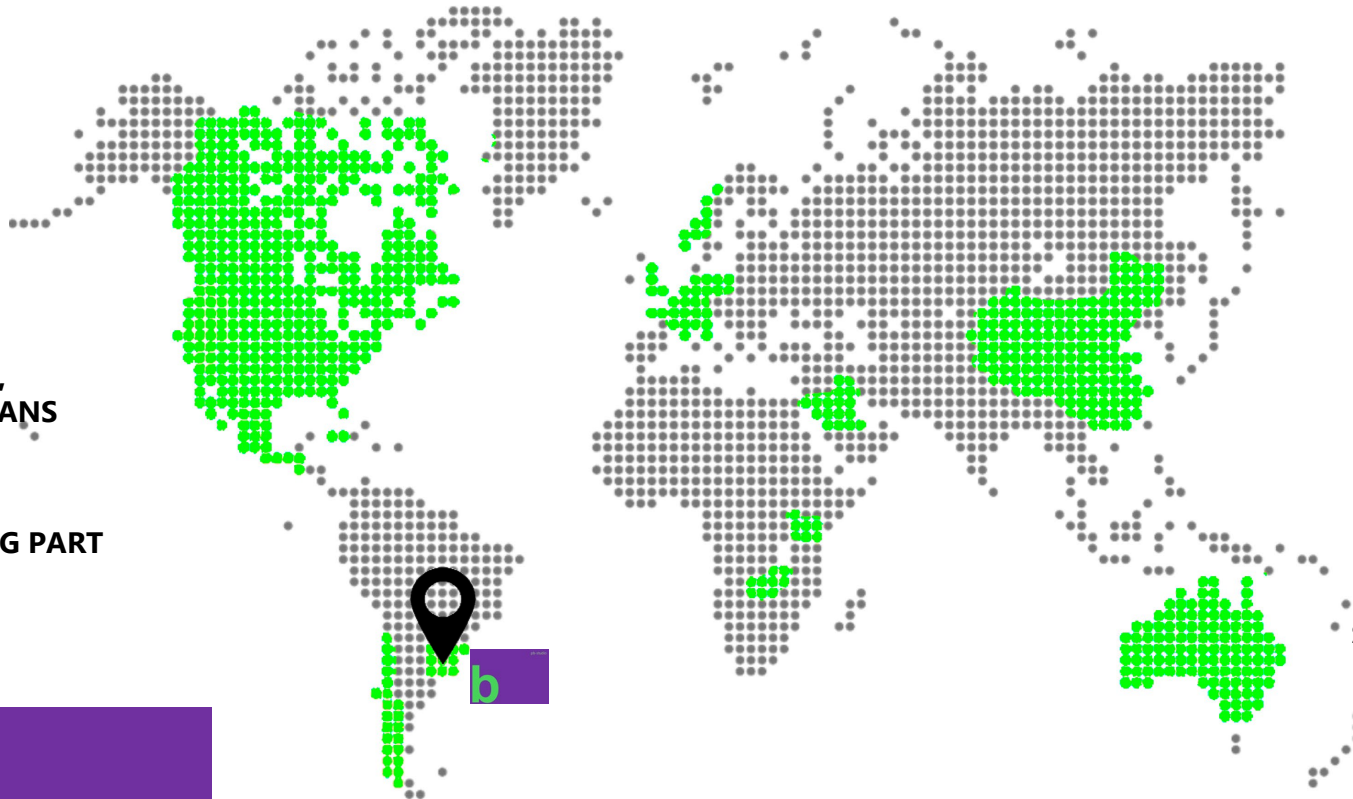
PROJECTS

WE ARE BOLD
PRAGMATISTS

WE EMPOWER
CLIENTS

WE ARE ARCHITECTS,
NOT MERE TECHNIANS

THE "WHERE" IS A BIG PART
OF OUR "HOW"



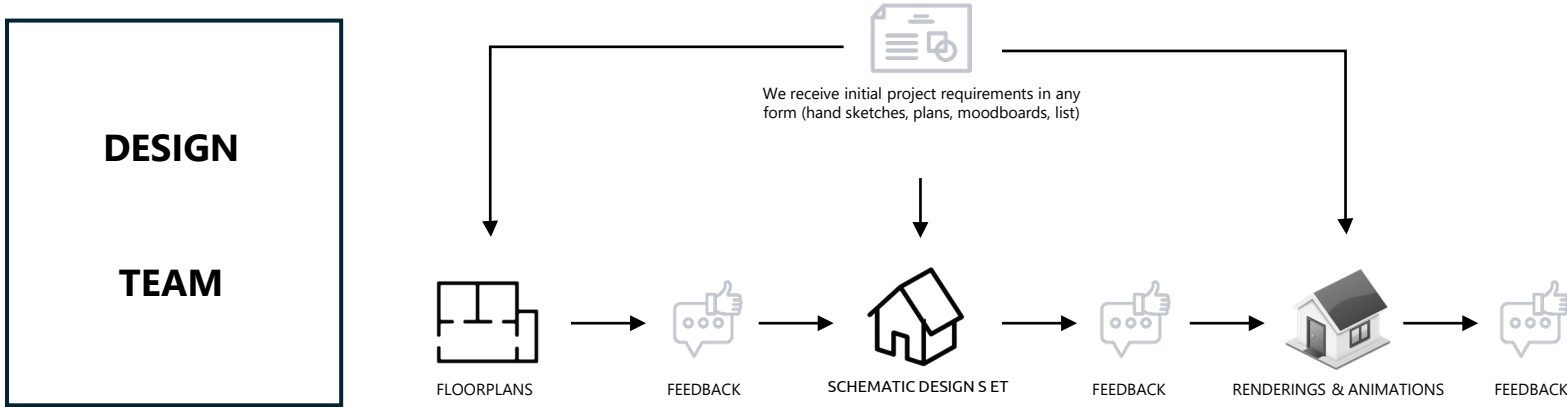
DISTANCE IS
ONLY
THEORETICAL.

WE PROVIDE
**CONSTANT
COMMUNICATION**
VIA CHAT, E-MAIL,
ONLINE MEETINGS,
PHONE CALLS,
CONFERENCE CALLS.

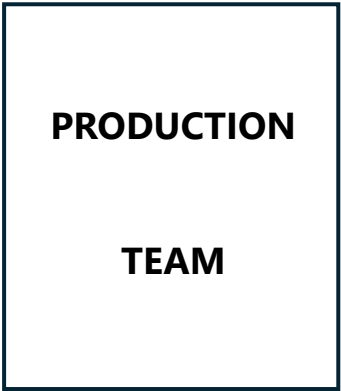
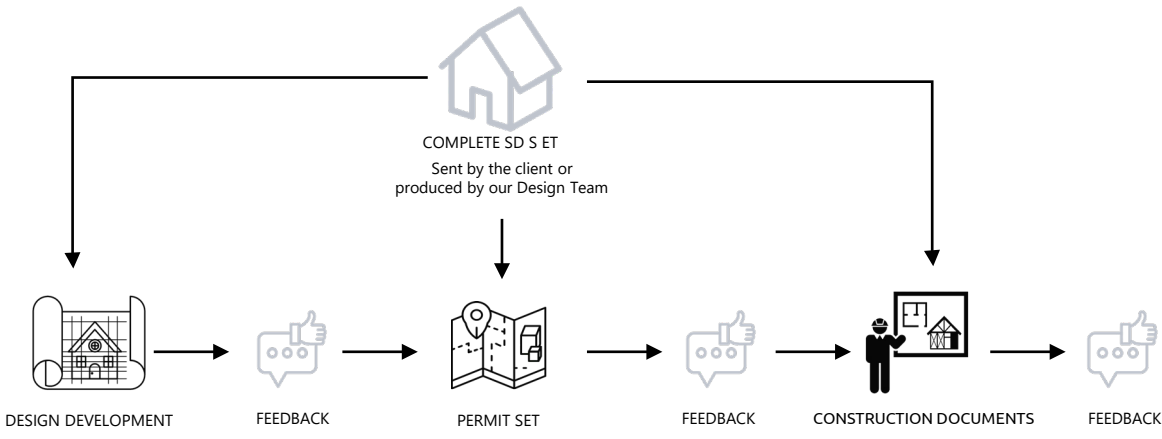
URUGUAY BOASTS AN
EXCEPTIONAL BUSINESS
CLIMATE, SOME OF THE
FASTEST INTERNET
SPEEDS IN THE AMERICAS,
AND OPERATES ON
98% RENEWABLE
ENERGY.

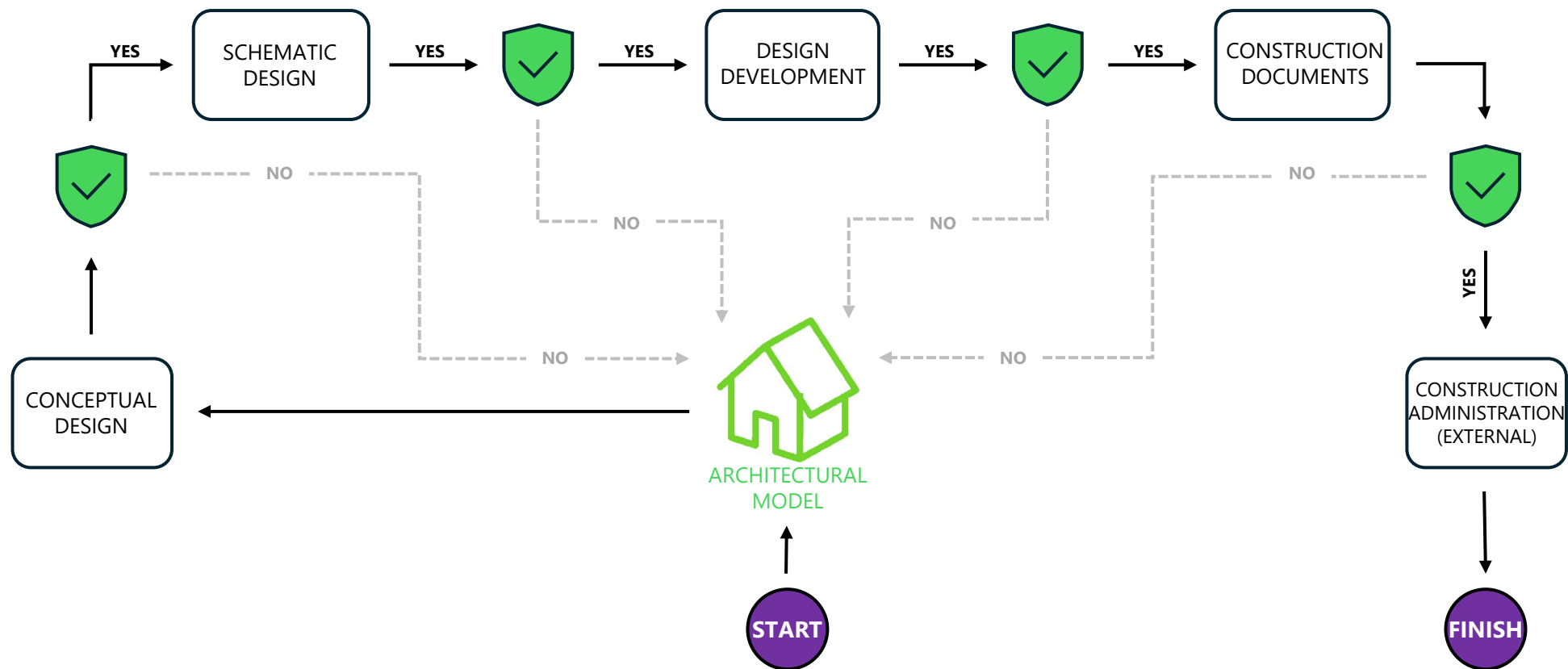
WE ARE **SLIGHTLY** AHEAD
OF NORTH AMERICA AND
SLIGHTLY BEHIND EUROPE.

FROM URUGUAY
TO THE WORLD



HOW WE WORK

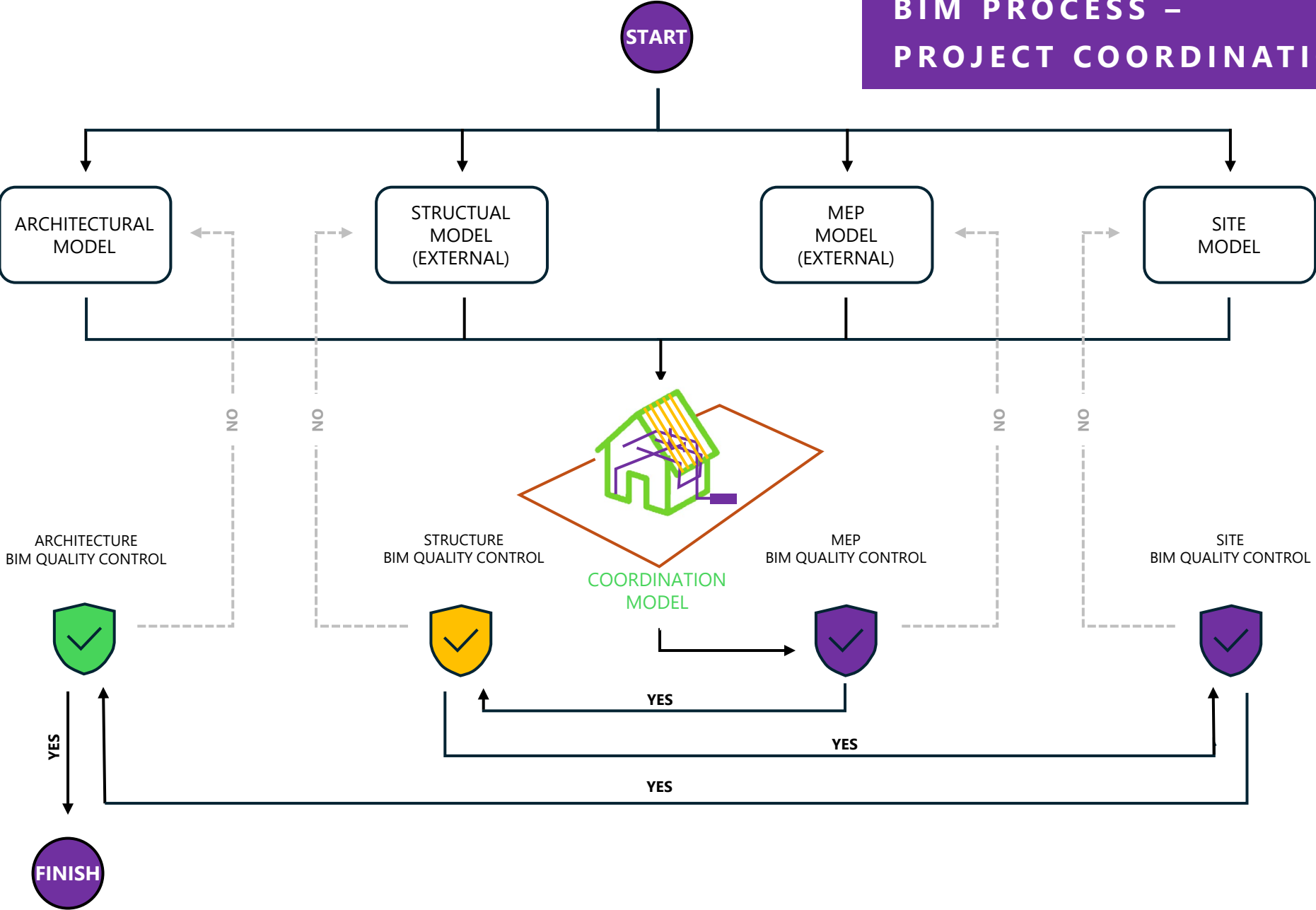




**BIM PROCESS –
ARCHITECTURE PROJECT**



BIM PROCESS –
PROJECT COORDINATION



**LOWER YOUR COSTS**

COMPETITIVE HOURLY RATES,
OR THE OPTION FOR A FIXED MONTHLY FEE OR PROJECT FEE.

**DETACHMENT**

NO LEGAL OBLIGATIONS OR EMPLOYEE BENEFITS.
WE ARE YOUR PARTNER.

**QUALITY CONTROL**

YOU HIRE A COMPLETE TEAM WHICH TAKES CARE OF QUALITY
ASSURANCE AND BACKUP COVERAGE.

**FLEXIBILITY**

HANDLING VARIABLE WORKLOADS WITHOUT THE NEED FOR
ADDITIONAL HIRES.

**STABILITY**

COMPREHENSIVE DESIGN SERVICES WITHIN ONE TEAM.

BENEFITS OF CHOSING US



WHO TRUSTS US



Open City
Architecture



MESA ARCHITECTURE STUDIO LLC

DiMarzio | Kato architecture

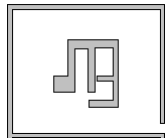


Ellen Fortin
Design + Architecture

EVELYN
PIERCE
DESIGN STUDIO



KRDB



Bardon Design Build



MMAA Studio
Architecture and Design



ASHLAND OAK



OGLE ARCHITECTURE & DESIGN



studio
bstyle®



Paul O'Neill Architects

BRIGHTON
Architecture + Design LLC



...READY TO JOIN THEM?

HOW TO REACH US

Diana Pérez Martino

Architect, Intl. Assoc. AIA

Founder & Director

M: diana@pb-studio.com

USA: (+1)(347) 559-1972

UY: (+598) 99 299 326

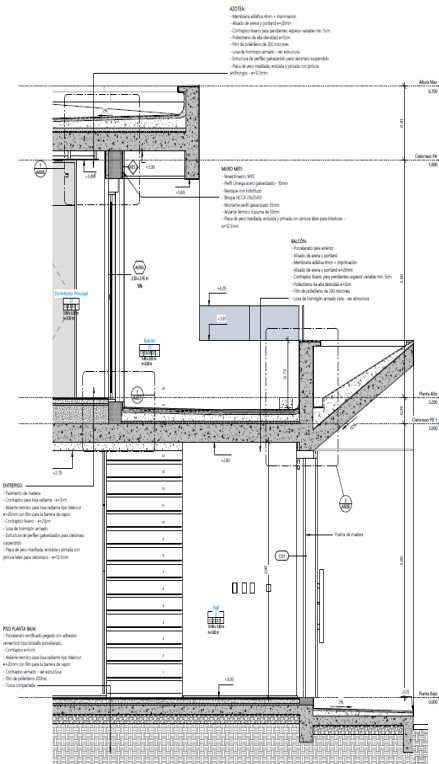
W: www.pb-studio.com

Linked In: [pb-studio-uy](#)

Instagram: [pb.studio.uy](#)

OUR WORK

This project stands out as a testament to our team's comprehensive expertise, as we were responsible for every aspect, from conceptualization through construction documentation and permit approval. Our scope encompassed architecture, interior design, and MEP services, while a structural engineer oversaw the concrete structure.



PROJECT TYPE: Single-family residence

LOCATION: Canelones, Uruguay

AREA: 5,400 S.F. / 500 m²

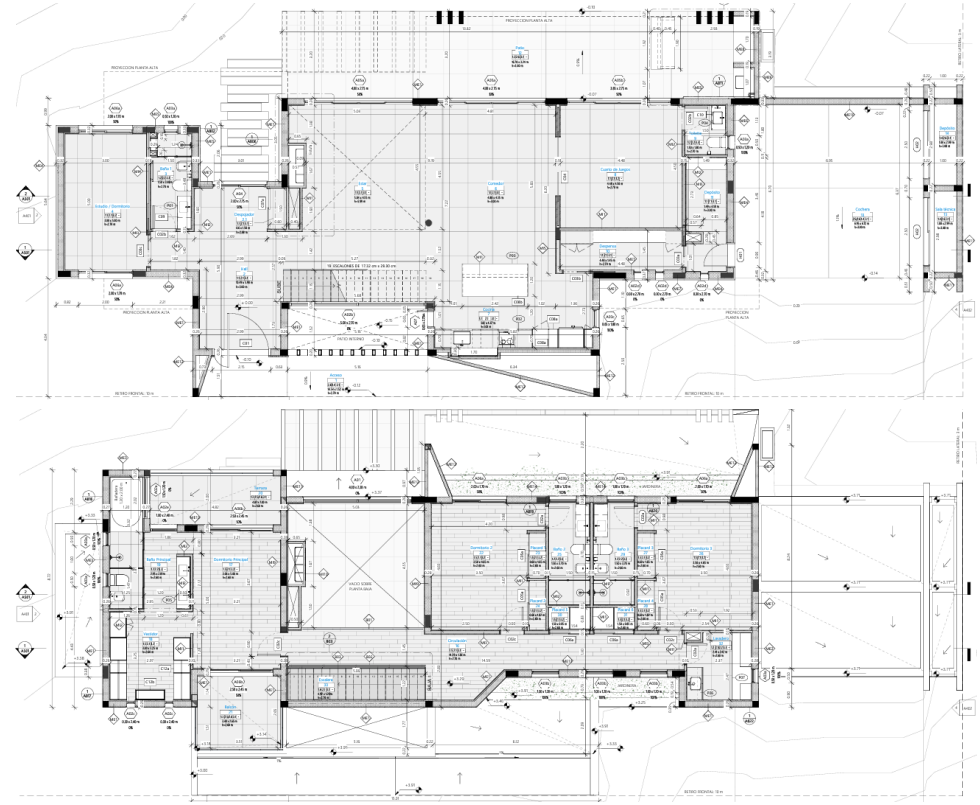
CONSTRUCTION SYSTEM: Reinforced concrete and Concrete blocks.

SOFTWARE: Revit, 3D Max+Vray, Photoshop

CUMBRES RESIDENCE

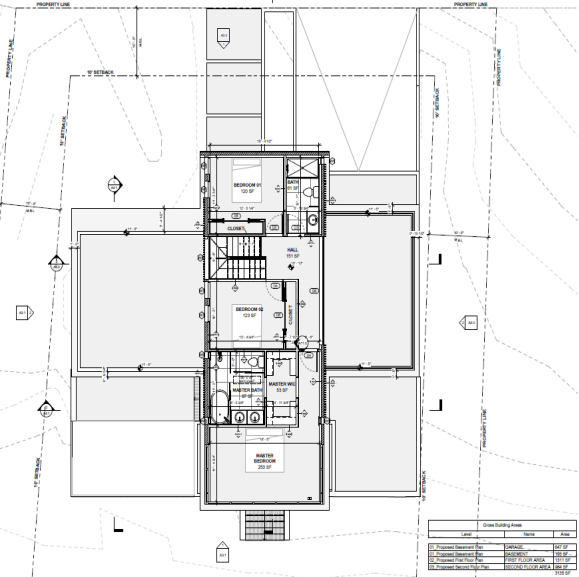


CUMBRES RESIDENCE

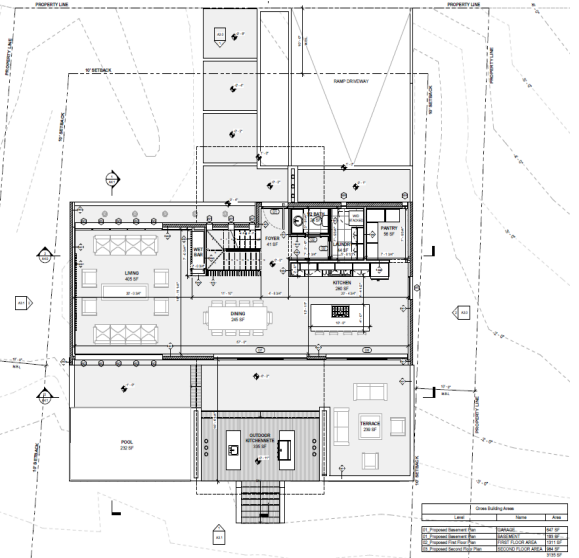


Moreover, we managed the whole project's visualization process, producing detailed photorealistic renderings and immersive 360-degree tours. This project eloquently showcases our design philosophy and the breadth of our technical skills, solidifying our reputation as a versatile and accomplished design firm





In Puerto Rico, we specialize in designing single-family homes, offering a full spectrum of architectural services from initial concepts to construction documents. Our process begins with collaborative design sessions to capture client preferences and local architectural influences, integrating these into detailed floor plans and elevations. We enhance project visualization through high-quality renderings and animations, providing stakeholders with a clear vision of the final design.



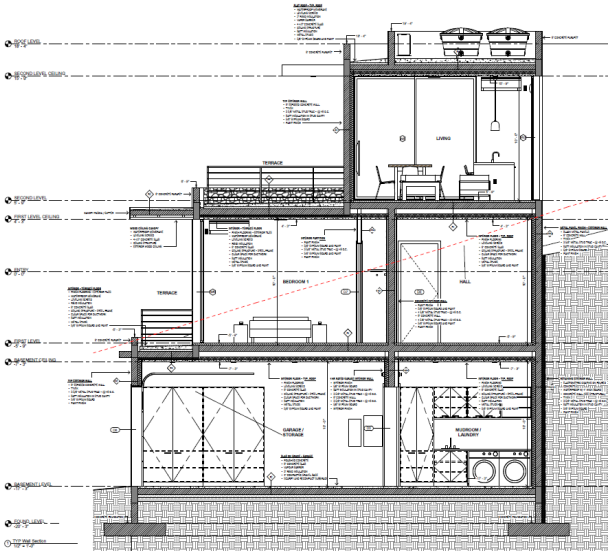
PROJECT TYPE: Single-family residence
LOCATION: Puerto Rico
AREA: 4,208 – 4,738 S.F. / 390 – 440 m²
CONSTRUCTION SYSTEM: Concrete, Steel frame and Wood frame.
SOFTWARE: Revit, SketchUp, 3D Max+Vray, Photoshop



PUERTO RICO HOMES



PUERTO RICO HOMES

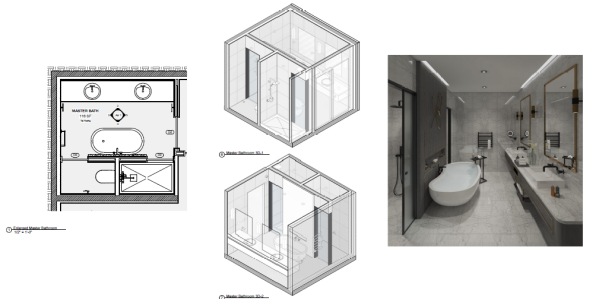
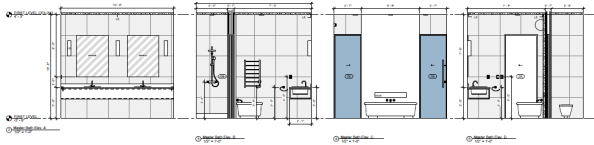


It was also important to come up with different project styles that adapted to each site's particularities; which was achieved successfully.

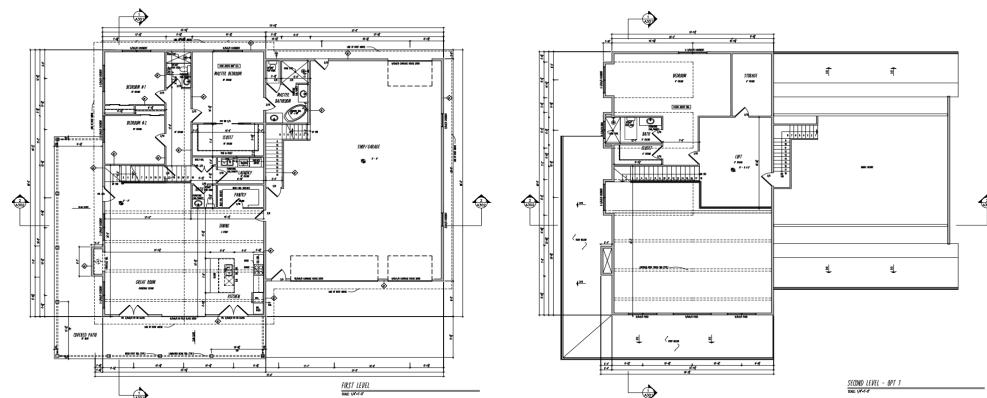
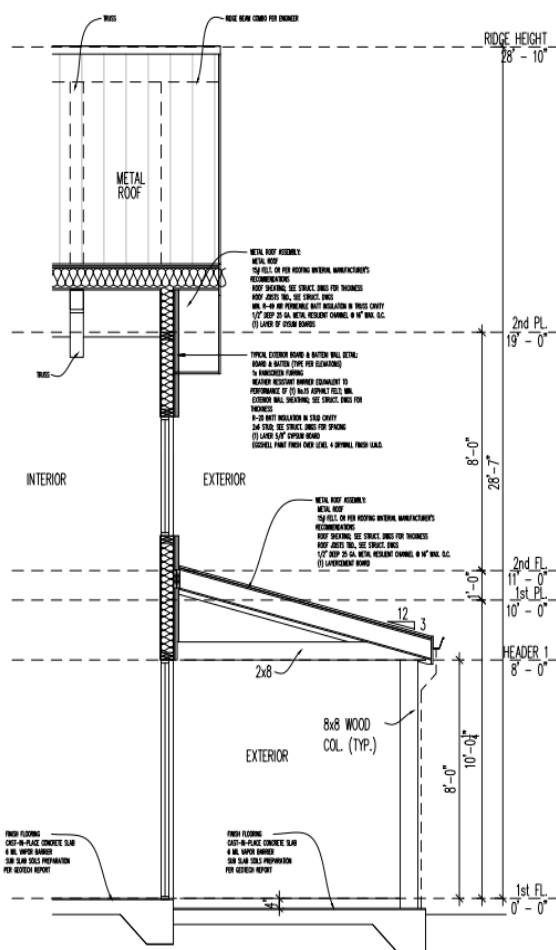
Simultaneously, we meticulously prepared permit sets that meet Puerto Rico's stringent building codes and zoning requirements, ensuring a smooth approval process. Our dedication to precision extends to crafting comprehensive construction documents, equipping contractors with the necessary details for accurate project execution.

Our approach emphasizes functional elegance and sustainability, tailored to exceed client expectations and embody the distinctive character of Puerto Rican architecture.

WE LOVED THE CREATIVE PROCESS



SOFTWARE: Revit, 3D Max+Vray, Photoshop



On this project, our task was to develop a Barndominium concept from initial floorplans to detailed renders and construction documents. While becoming acquainted with the traditional Barndominium concept, we aimed to infuse it with a contemporary flair rather than adhering strictly to its rural origins. The resulting design preserves key elements such as the floorplan layout, finishes, and roofing typical of traditional country houses. However, we also integrated unique spatial arrangements and modern exterior elements to enhance its overall appeal and functionality.

BARNDOMINIUM



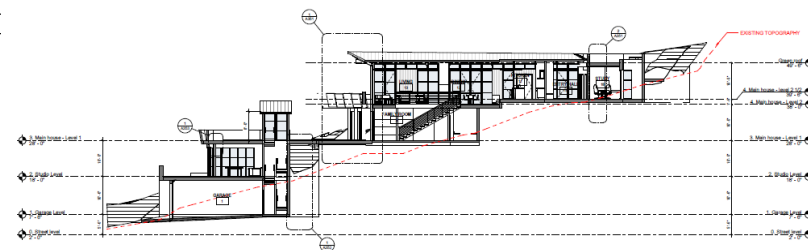
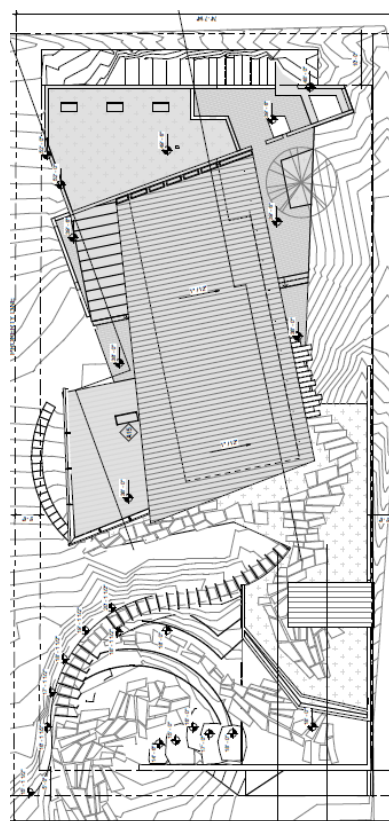
BLENDED RESIDENCES

We've had the privilege of working on projects in diverse locations, ranging from urban centers to rural, mountainous, and forested environments. One of the highlights of our journey was collaborating with an architect renowned for their expertise in site-specific designs, transforming concepts into reality.

Working in complex locations demanded meticulous attention to detail, ensuring that different construction types could work together effectively both technically and graphically.

From the very beginning, we relied on 3D modeling to visualize and fine-tune designs, ensuring a seamless integration of design intent with technical feasibility throughout the process, from Schematic Design to Construction Documents. Alongside this, we developed photorealistic renderings to iteratively validate design decisions and technical solutions.

Selecting images to represent these projects was a challenge, as each one held unique significance. However, we've curated a collection that captures the essence and achievements of these endeavors.



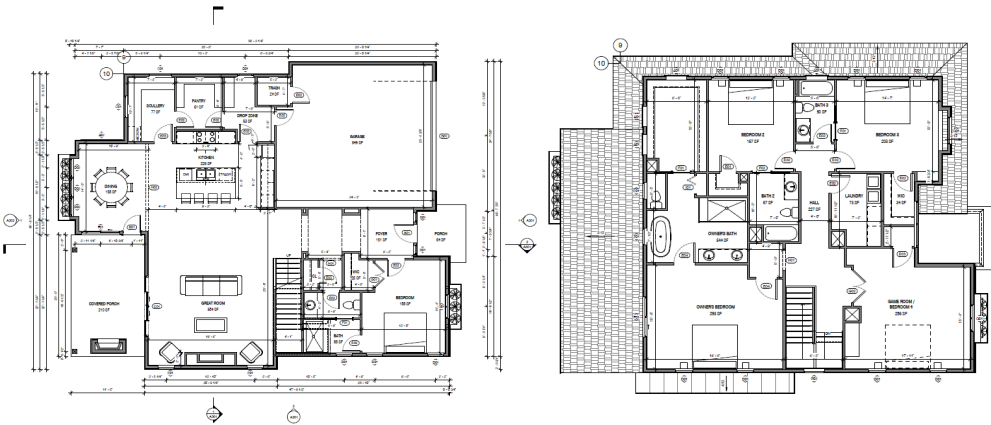
PROJECT TYPE: Single-family residence

LOCATION: Colorado, USA

AREA: 4,500 – 4,700 S.F. / 418 – 437 m²

CONSTRUCTION SYSTEM: Concrete, Steel frame and Wood frame.

SOFTWARE: Revit, SketchUp, 3D Max+Vray, Photoshop



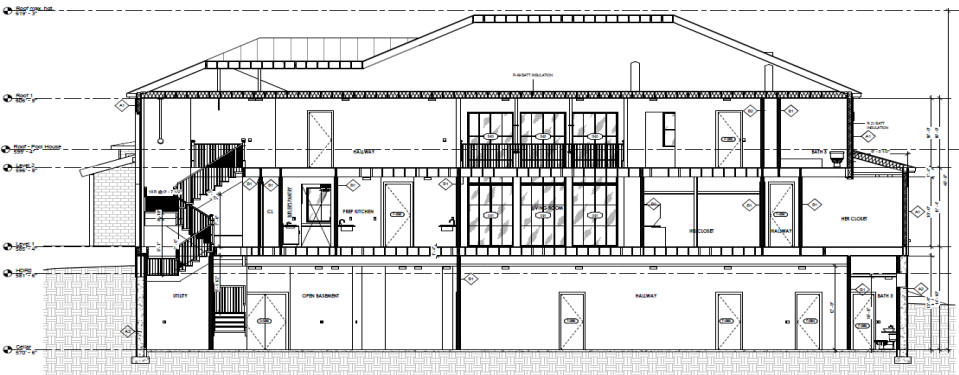
PROJECT TYPE: Single-family residence
LOCATION: USA
AREA: Variable
CONSTRUCTION SYSTEM: Wood frame.
SOFTWARE: Revit, 3D Max+Vray, Photoshop



AMERICAN HOMES

We have extensive experience with a variety of typical American homes across all scales and design styles, spanning from the West to the East coast. Our projects range from ground-up constructions to renovations, demolitions, and additions.

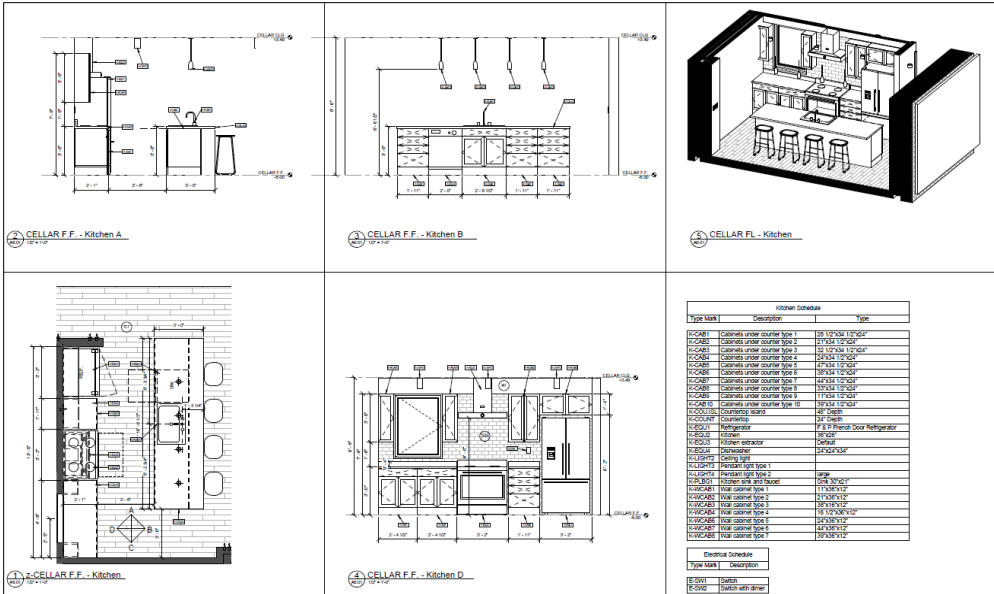
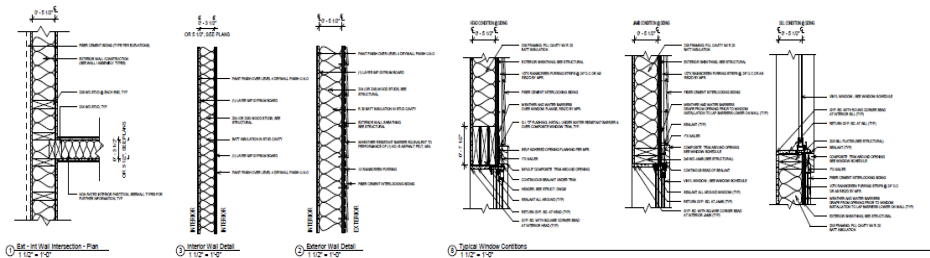
Throughout this journey, we gained valuable knowledge of U.S. residential culture, including common housing typologies, interior design, construction methods, and material choices. We also became proficient in navigating building codes and zoning ordinances, ensuring that our designs were both compliant and well-suited to each community's unique needs.

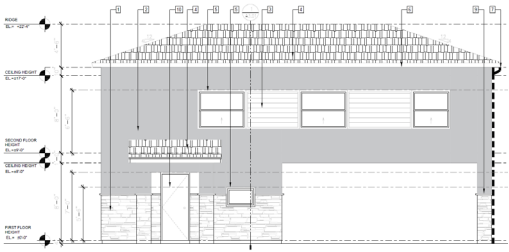


AMERICAN HOMES

Our role varied depending on the project, assisting on exterior and interior design drawings.

For some, we provided renderings of already designed projects, assisted with permit sets and construction documents for others, and developed others entirely from inception.

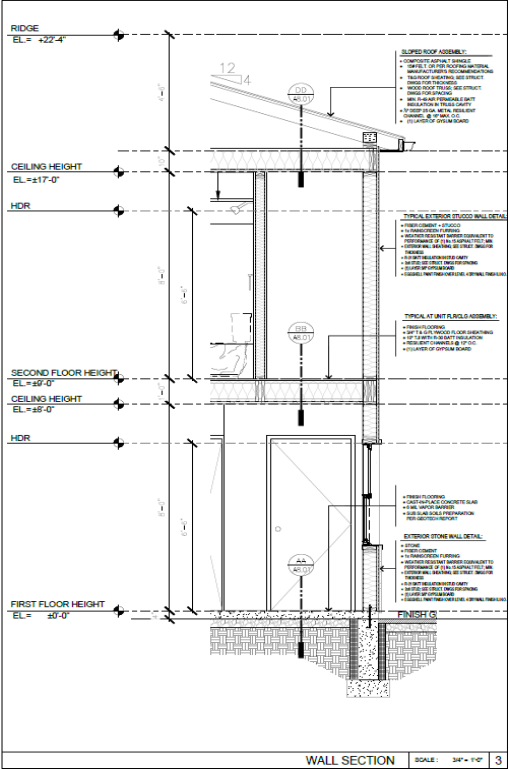




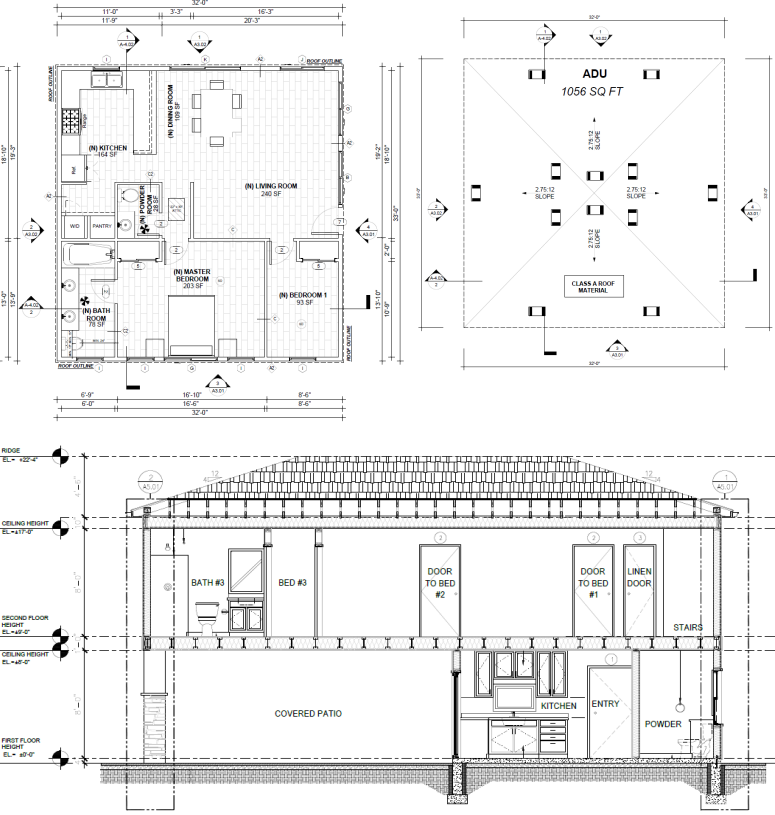
Many of the single-family projects also included ADUs in various forms: attached, detached, and garage conversions.

Our focus has predominantly been on producing comprehensive permit sets tailored to the unique requirements of various cities. Each set is meticulously crafted to meet the specific guidelines and standards mandated by local authorities.

These examples serve to illustrate our proficiency in navigating the complexities of ADU regulations and delivering tailored solutions that meet regulatory



ADUs



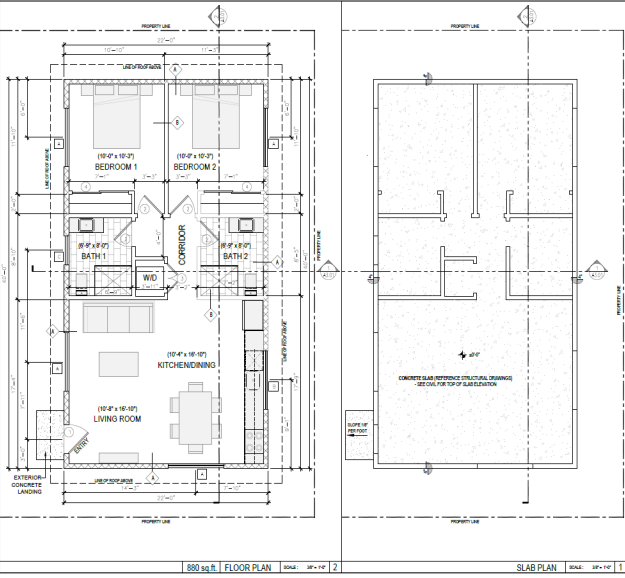
PROJECT TYPE: Accessory Dwelling Units

LOCATION: USA

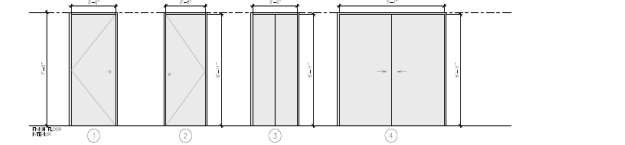
AREA: Variable

CONSTRUCTION SYSTEM: Wood frame.

SOFTWARE: AutoCAD, Revit



DOOR SCHEDULE											
DOOR NO.	LOCATION	SIZE	TKL	DESCRIPTION	DOOR	MATERIAL	FINISH	GLAZING	FRAME	FINISH	REMARKS
1	ENTRY DOOR	3'0" x 7'0"	1'30"	ALUMINUM FRAME GLASS DOOR WITH SIDE LIGHT	ALUMINUM GLASS DOOR	ALUMINUM	PAINT	-	WOOD	PAINT	DOOR AND FRAME TO BE FINISHED
2	POWDER ROOM DOOR	3'0" x 7'0"	1'30"	ALUMINUM FRAME GLASS DOOR	ALUMINUM GLASS DOOR	ALUMINUM	PAINT	-	WOOD	PAINT	DOOR AND FRAME TO BE FINISHED
3	BED DOOR	3'0" x 7'0"	1'30"	ALUMINUM FRAME GLASS DOOR	ALUMINUM GLASS DOOR	ALUMINUM	PAINT	-	WOOD	PAINT	DOOR AND FRAME TO BE FINISHED
4	SLIPPER DOOR	3'0" x 7'0"	1'30"	ALUMINUM FRAME GLASS DOOR	ALUMINUM GLASS DOOR	ALUMINUM	PAINT	-	WOOD	PAINT	DOOR AND FRAME TO BE FINISHED





US MULTI-FAMILY RESIDENTIAL - design

Throughout our career, we have had the opportunity to collaborate with prominent architecture firms in both the United States and Canada on numerous large scale multi-family projects. Indeed, our initial experiences were predominantly focused on multi-family developments design.

We gained valuable insights into various project types and their unique challenges, including attached homes, townhomes, wraps, podiums, corridor buildings, and mixed-use developments. Furthermore, we also dig into different architectural styles for the exterior design, from Spanish-Mission style (traditionally in the West Coast) to urban contemporary design.

PROJECT TYPE: Multi-family residence

LOCATION: USA / Canada

AREA: Variable

CONSTRUCTION SYSTEM: Wood frame and concrete.

SOFTWARE: AutoCAD, Revit, SketchUP, 3D Max+Vray, Photoshop

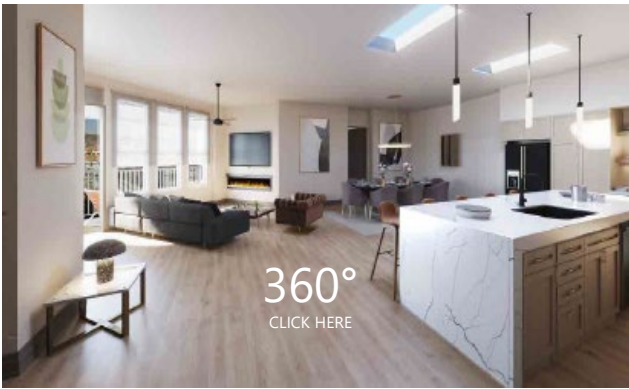


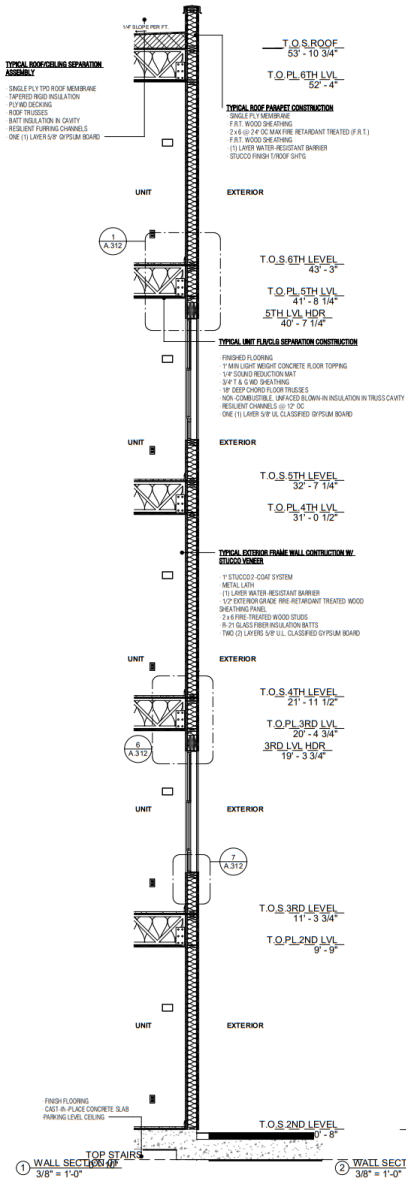
US MULTI-FAMILY RESIDENTIAL - design



Our roles encompassed designing floorplans, creating diverse elevation styles, planning amenities and courtyards, and designing parking structures. Additionally, we actively participated in early-stage land planning exercises for feasibility studies. Our work spanned across 2D and 3D design tasks, and we specialized in graphic visualization through renderings, animations, and immersive 360 VR tours.

These examples highlight the breadth of project diversity we have successfully contributed to over the past 8 years.





Later, we had the opportunity to work on technical drawings for multi-family projects. We already had gained a vast experience on single-family permit sets and construction documents, which gave us a solid base to start from, and also collaborated with other architecture firms developing their projects CD sets.

This is project we entirely developed from scratch and are very proud to share.



PROJECT TYPE: Multi-family residence

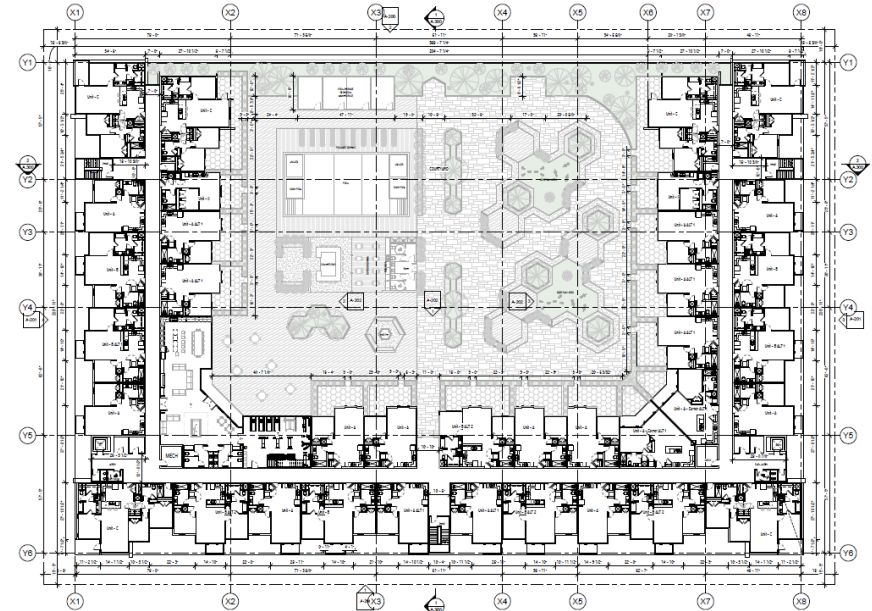
LOCATION: Florida, USA

AREA: 392,000 S.F. / 36,400 m²

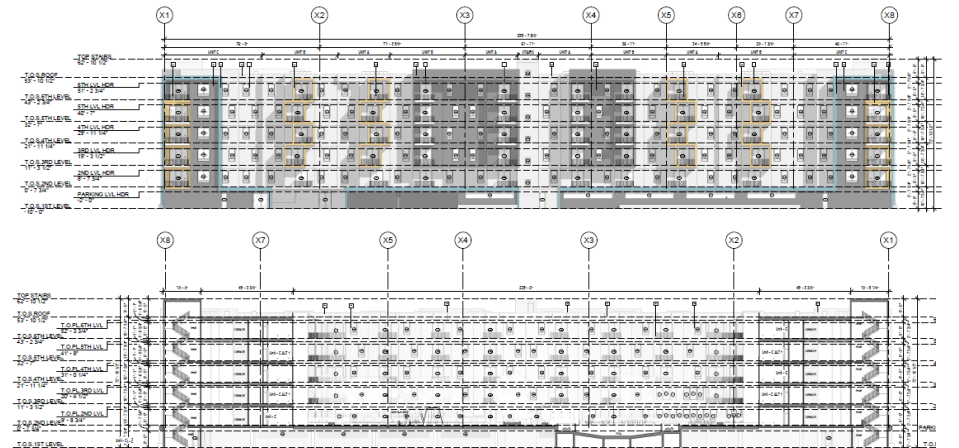
UNITS: 252

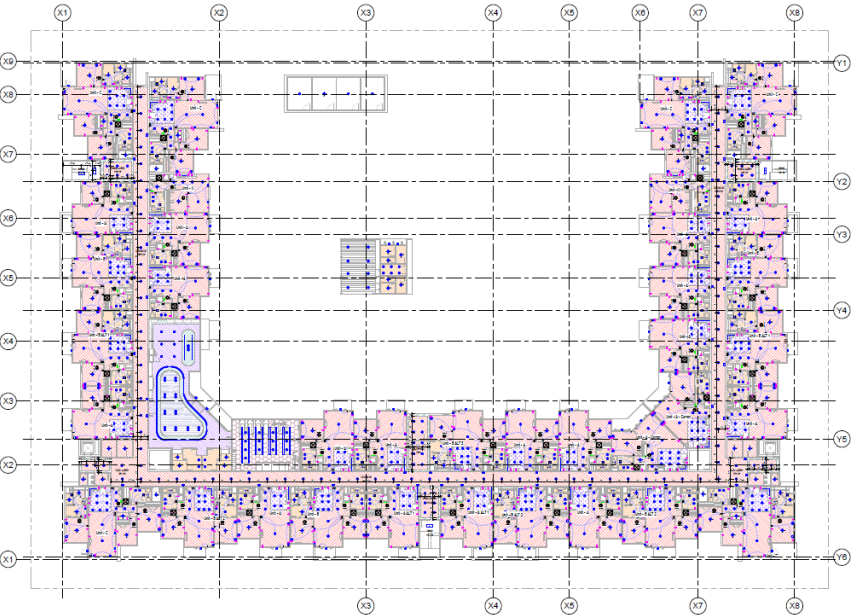
CONSTRUCTION SYSTEM: 5-level wood frame over concrete podium

SOFTWARE: Revit, 3D Max+Vray, Photoshop



US MULTI-FAMILY RESIDENTIAL - cd





This multi-family podium building project emphasizes modern living while addressing significant challenges related to ADA (Americans with Disabilities Act) and fire code compliance. The design process required a deep understanding of these regulations, ensuring that the building not only adhered to legal standards but also provided a safe, accessible, and comfortable environment for all residents.

The podium structure supports residential units above parking at ground level, optimizing space in an urban setting. Ensuring ADA compliance was a core focus, with careful attention to the layout of accessible units, common areas, and features like ramps, door widths, and elevators. The design ensures seamless access for residents with varying mobility needs.

US MULTI-FAMILY RESIDENTIAL - cd



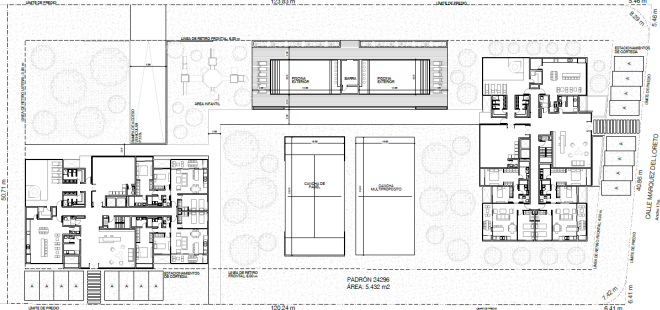
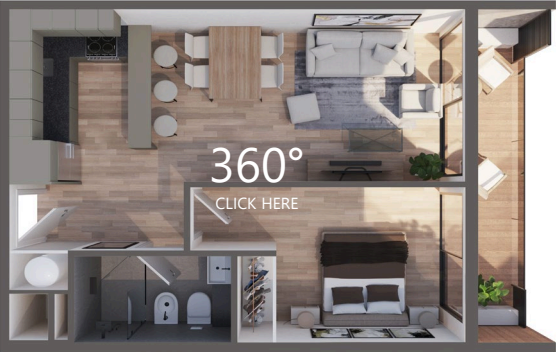
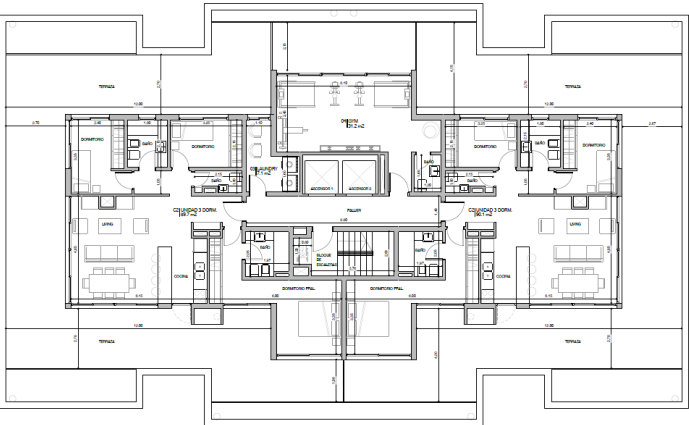
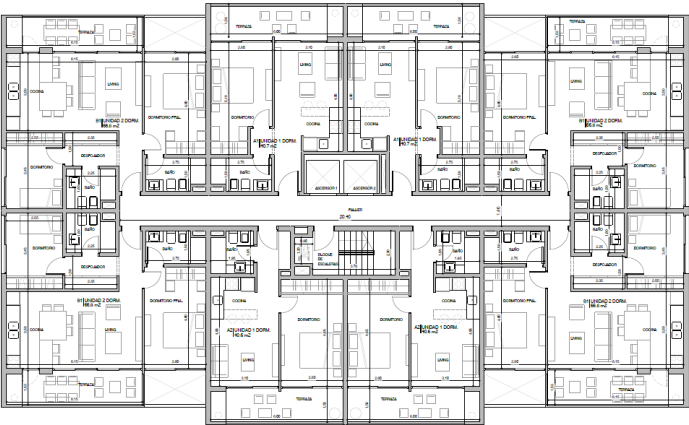
Fire safety was equally crucial, especially given the building's vertical design. Fire-rated materials, clear exit paths, and smoke evacuation systems were integrated to ensure safety. Despite these regulatory challenges, the project also prioritized sustainability, incorporating energy-efficient systems and green spaces, reflecting the firm's commitment to creating a safe and vibrant living environment.



PROJECT TYPE: Multi-family residence
LOCATION: Montevideo/Maldonado/Canelones, Uruguay
AREA: Variable
CONSTRUCTION SYSTEM: concrete, steel frame and masonry
SOFTWARE: AutoCAD, Revit, SketchUp, 3D Max+Vray, Photoshop

We have successfully undertaken a variety of projects for local developers, demonstrating our proficiency in adapting to a wide range of construction systems, project scales, cultural contexts, and design aesthetics unique to our region.

These projects serve as compelling examples that highlight our versatility, showcasing our ability to navigate and excel in diverse architectural challenges and requirements.



MULTI MADE IN URUGUAY

Continuing to demonstrate our versatility through showcasing different project types, we present our Nordish projects nestled in the picturesque fjords. In this instance, we collaborated closely with a local developer to design the project and create visualizations that effectively communicated the architectural vision.

Among these is a notable 4-plex and a pair of duplexes, each featuring a contemporary Nordic design ethos that is evident both in its exterior aesthetic and interior detailing.

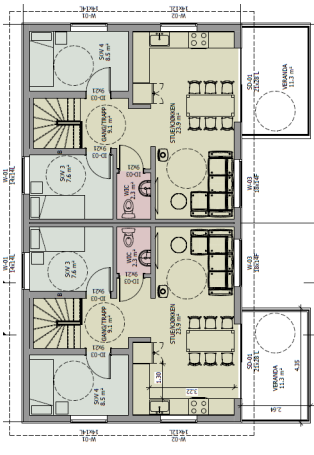
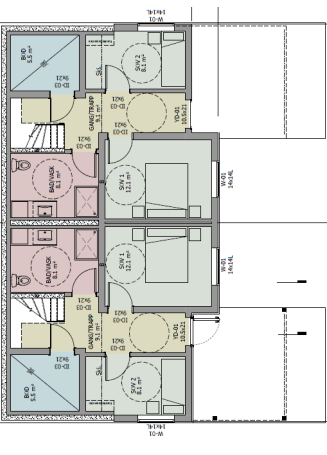
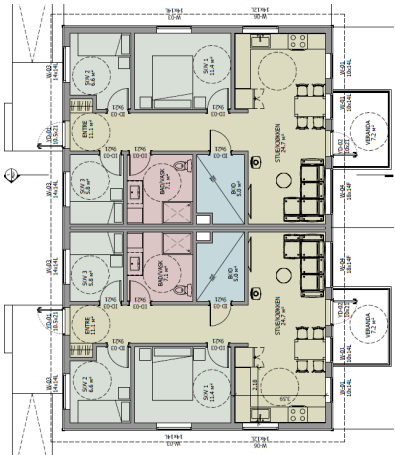
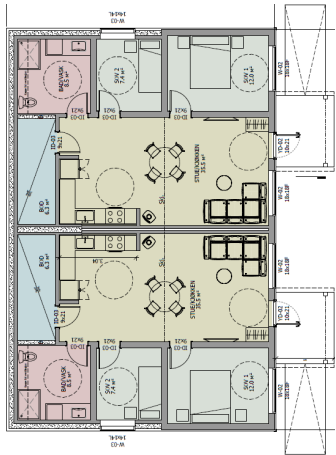
PROJECT TYPE: Multi-family residence

LOCATION: Norway

AREA: 3,660 S.F. / 340 m² each building

CONSTRUCTION SYSTEM: concrete and wood frame.

SOFTWARE: Revit, 3D Max+Vray, Photoshop



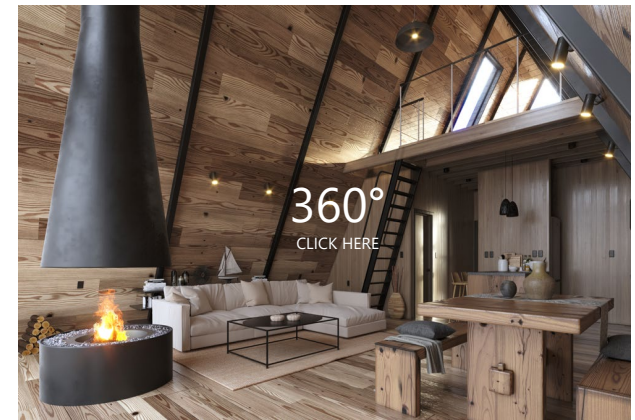
MULTI FJORD

TINY HOMES



This type of residence represents a widespread solution to housing crises worldwide.

They serve multiple purposes, including permanent residences, ADUs (Accessory Dwelling Units), and mobile homes. Their design ranges from traditional and vernacular styles to contemporary aesthetics, often constructed with steel or wood frames for rapid and straightforward assembly in various locations.



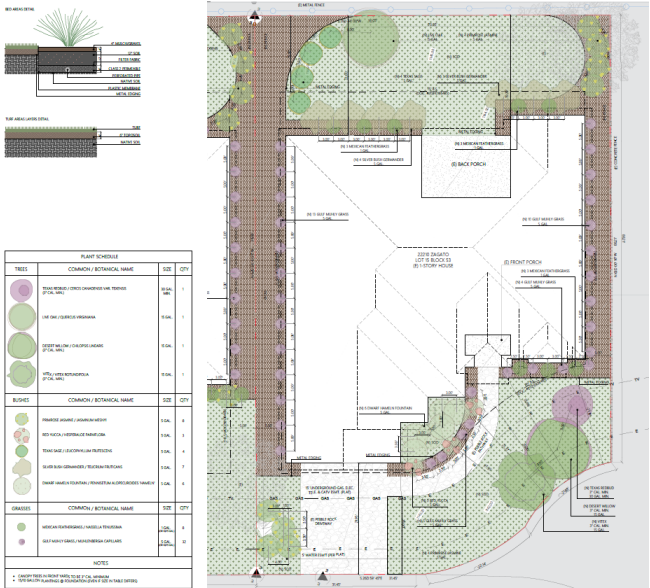
PROJECT TYPE: Tiny Home

LOCATION: USA

AREA: Variable

CONSTRUCTION SYSTEM: Wood frame, Steel frame.

SOFTWARE: AutoCAD, SketchUp, 3D Max+Vray, Photoshop



We have collaborated with several landscape architects on a variety of extensive landscape projects. Our work encompassed hardscaping, vegetation planning, and the integration of structures such as pools, barbecues, pergolas, and fire pits.

Our responsibilities included creating 2D colored site plans and elevations, preparing permit sets, generating renderings, and developing immersive 360 VR tours.

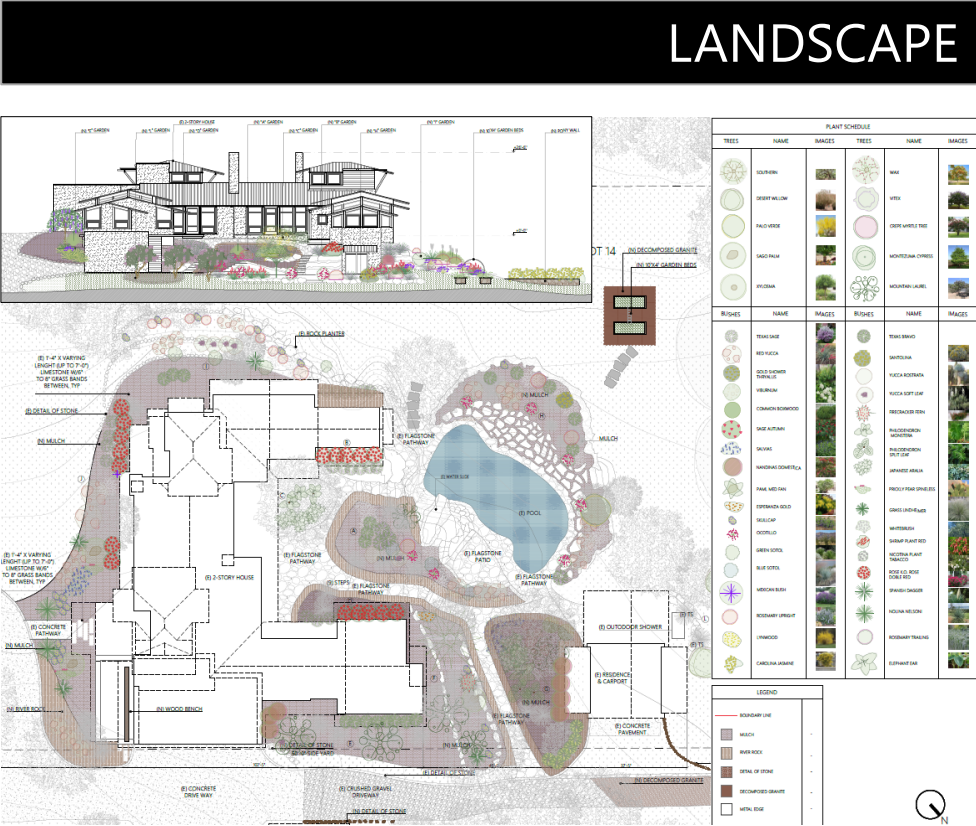
PROJECT TYPE: Landscape

LOCATION: USA & Canada

AREA: Variable

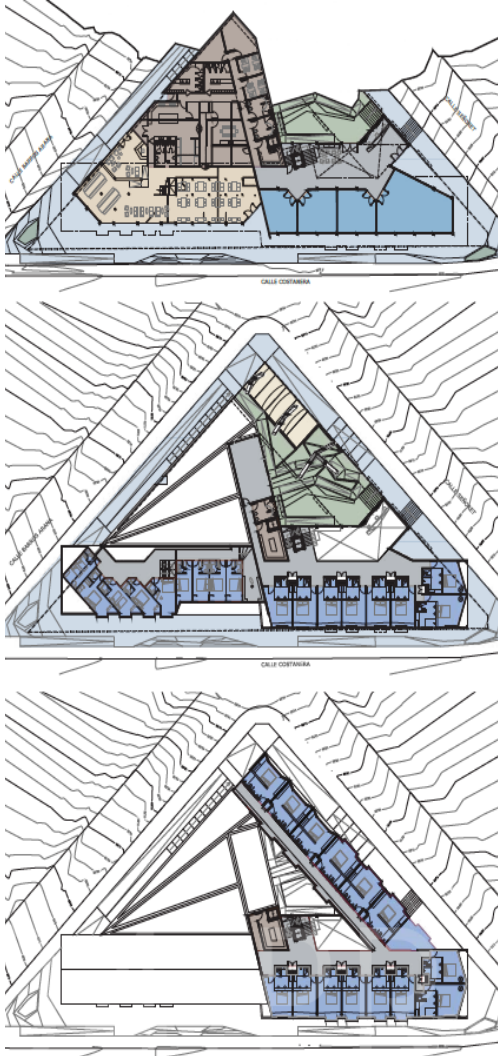
CONSTRUCTION SYSTEM: Wood frame, concrete, Steel frame, masonry

SOFTWARE: AutoCAD, SketchUP, 3D Max+Vray, Photoshop



HOTEL NATALES

We are proud of the outcome and hope you find our hotel design as captivating as we do.



PROJECT TYPE: Hospitality

LOCATION: Puerto Natales, Chile

AREA: 26,040 S.F. / 2,400 m²

CONSTRUCTION SYSTEM: Wood frame, Steel frame and concrete.

SOFTWARE: AutoCAD, SketchUP, 3D Max+Vray, Photoshop

This project unfolded across multiple phases, each involving varying degrees of intervention, and we were engaged throughout the entire process. Ultimately, the owner opted to launch a competition to demolish and reimagine the hotel with a contemporary concept.

Our role encompassed developing the initial concept, designing floorplans, and creating the exterior aesthetics. Our approach was centered around preserving significant elements of local architecture and geography while capitalizing on the breathtaking views of the lake and mountains.



PROJECT TYPE: Hospitality

LOCATION: Puerto Rico

AREA: 347,400 S.F. / 32,300 m²

CONSTRUCTION SYSTEM: Concrete, Wood frame.

SOFTWARE: AutoCAD, SketchUp, 3D Max+Vray, Photoshop



One of our clients, a developer, tasked us with creating a design concept and site plan layout for a resort nestled in the Puerto Rican jungle. The project entailed renovating existing lodges, stables, and chicken coops, which would be integrated with new structures including tree houses, cabins, and a chill-out events center.

The overarching aesthetic aimed to strike a balance between cozy rusticity and modern luxury. Our design approach emphasized blending natural elements with contemporary comforts to create a serene and inviting atmosphere.

We must admit, designing this resort made us wish we could spend a few days enjoying its tranquil surroundings ourselves.



INTO THE WILD



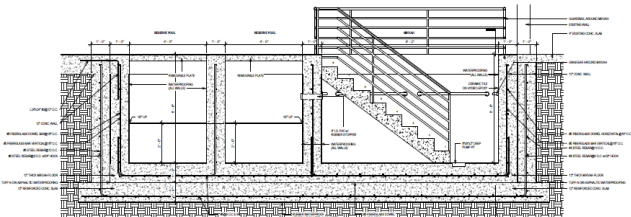
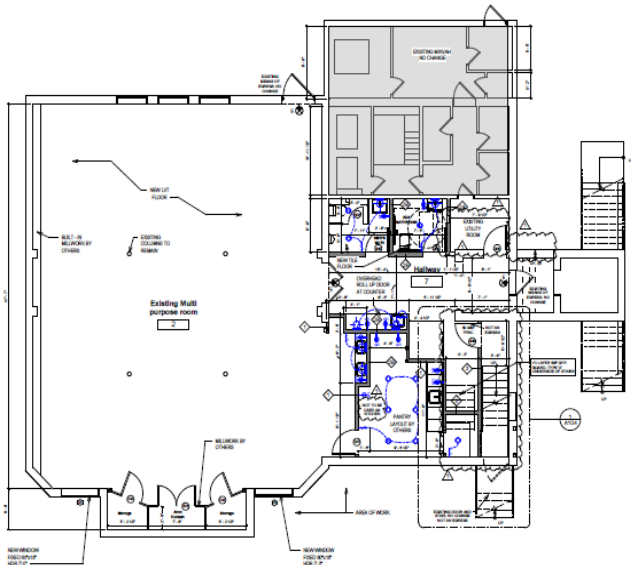


CULTURAL

We have had the opportunity to expand our knowledge through collaboration with residential clients who are involved in religious building projects. These engagements have provided invaluable insights into the intricacies of floorplan layout, functional design considerations, and the overall operation of such buildings.

Learning from our clients has been instrumental in broadening our horizons and opening new avenues for our practice, for which we are deeply grateful.

In several instances, following our clients' guidance, we assisted in the comprehensive design process, including developing the overall architectural concept, preparing permit sets, and creating detailed construction documents. These experiences have enriched our understanding and strengthened our commitment to delivering thoughtful and impactful architectural solutions across various project types.



PROJECT TYPE: Religious / Educational
LOCATION: New York, USA
AREA: Variable
CONSTRUCTION SYSTEM: Concrete and Wood frame
SOFTWARE: Revit, 3D Max+Vray, Twinmotion, Photoshop





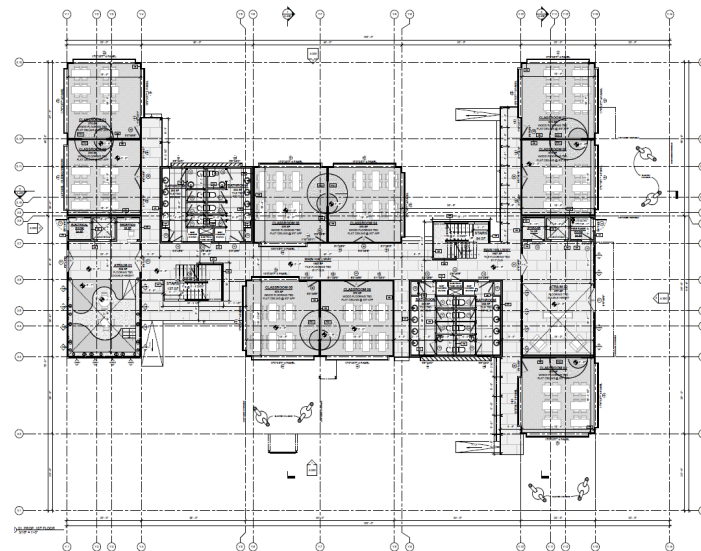
PROJECT TYPE: Educational

LOCATION: Puerto Rico

AREA: 16,700 S.F. / 1,550 m²

CONSTRUCTION SYSTEM: Concrete, Containers, Steel frame.

SOFTWARE: Revit, SketchUp, 3D Max+Vray, Photoshop



This project unfolded in two distinct phases. Initially, a local developer approached us to conceptualize an expansion for an existing Elementary School. The vision was to integrate containers with steel frame structures to create a cohesive ensemble.

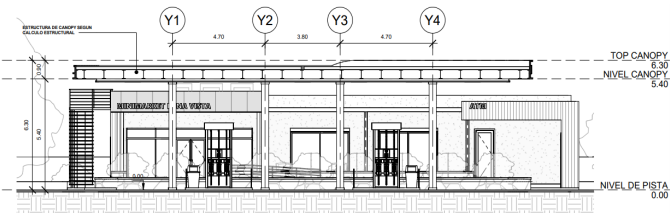
The resulting design was deemed highly suitable, enjoyable, colorful, and child-friendly—a sentiment shared by the owner, who selected our concept to move forward with the project. Several months later, we were commissioned to produce detailed drawings essential for estimating the project's costs. Additionally, we assisted in compiling the take-off schedules.

Working on this project was a delight, made even more so by the wonderful client collaboration. We eagerly anticipate the realization of our design and the positive impact it will have on the school community.

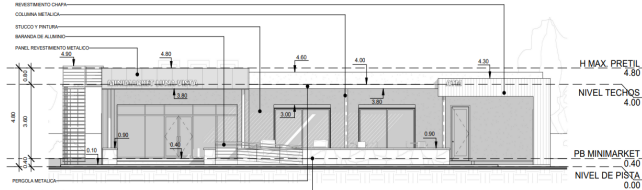


PALMAS ACADEMY





1 CORTE A-A SURTIDORES
1: 100

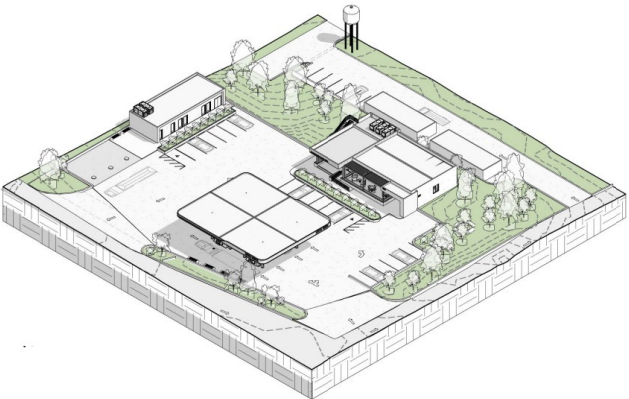
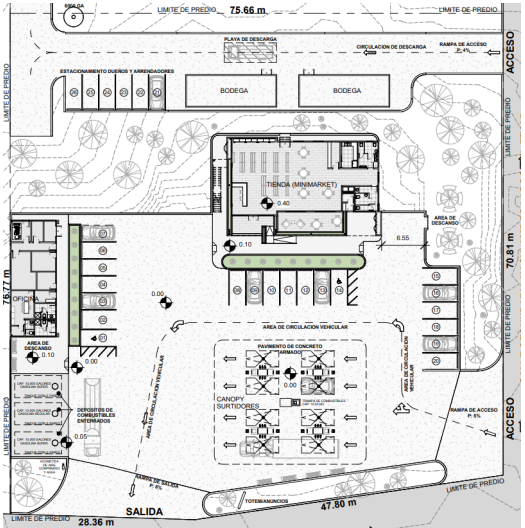


1 MINIMARKET_FACHADA FRONTAL/ SURESTE
1: 100

Designing a gas station involves a multifaceted approach that integrates both functional and aesthetic considerations. Our work begins with comprehensive site analysis and zoning assessments to ensure compliance with local regulations and safety standards. We collaborate closely with the local architect to conceptualize a layout that optimizes traffic flow, accessibility, and operational efficiency while enhancing customer convenience.

In the design phase, meticulous attention is given to the placement of fuel dispensers, canopy structures for weather protection, and the layout of parking areas. Simultaneously, we focus on the interior layout and branding of the mini-market and office building, aiming to create a welcoming environment that promotes sales and customer satisfaction. Our designs emphasize safety features, such as adequate lighting and clear signage, to enhance visibility and ease of navigation for patrons both during the day and at

PROJECT TYPE: Commercial
LOCATION: Puerto Rico
AREA: 59,200 S.F. / 5,500 m²
CONSTRUCTION SYSTEM: Concrete, Steel frame
SOFTWARE: Revit



LUNA VISTA GAS STATION

pb-studio

