



12 Av. "B" 3-65, Zona 1. Residenciales "El Cerrito"
Aptdo. Postal 2307 Guatemala, C.A. 01001

PBX: + (502) 2251 6863
Direct phone: + (502) 2220 0379
Fax: + (502) 2220 0379

E-mail: arturointerpack@gmail.com
Mobile phone: + (502) 5966 0644

NiMCO Corporation

Gable –Top Packaging Machinery Systems



***NiMCO Corporation
1000 NiMCO Drive
Crystal Lake, IL 60014***



**NiMCO Corporation
Gable-Top Packaging Machinery System**

NiMCO - Introduction



Founded in 1962, NiMCO continues to be the leading independent Manufacturer of Gable-top Packaging Equipment worldwide.

NiMCO is best known for its building of high-quality, easy-to-operate systems, at a competitive price.

- ✓ Form-Fill-Seal Machines
- ✓ Custom Applications
- ✓ Auxiliary Fill Systems
- ✓ In-House Service and Support



NiMCO Corporation
Gable-Top Packaging Machinery System

Nimco Facts



- Established in 1962 As Northern Illinois Machinery Company (NiMCO).
- Privately held by the Bachner family since 1972.
- 40,000 square foot facility located 40 miles outside of the Chicago metro area.



NiMCO Corporation
Gable-Top Packaging Machinery System

NiMCO Machine Portfolio



- Models for all Carton Cross Sections
- 120ml to 5 Liter
- Up to 7500 CPH

- Cold or Hot Fill Systems
- Ultra Clean Systems
- Dry Fill Units
- Auxiliary Filler Units



NiMCO Corporation
Gable-Top Packaging Machinery System

Machine Systems

- Mini Cross Section
- Standard – Quart/Liter
- ½ Gallon / 2 Liter
- Imperial ½ Gallon
- Gallon / 5 Liter
- CAP-PAC® Spout Applicator



NiMCO Corporation
Gable-Top Packaging Machinery System

Standard NiMCO Machine Specifications



Stainless Steel Frame and Exterior Panels
Product Contact Components – 316 Stainless Steel
PLC Control System
Electric Forced Air Bottom and Top Heater Units
Security Enclosure - Polycarbonate Doors
Interlock Safety Switches
Central Manifold Greasing System
No Carton - No Fill Sensor Switches
Variable Frequency Drive
Water Cooled Sealing Surfaces



NiMCO Corporation
Gable-Top Packaging Machinery System

Optional Equipment and Accessories

Touch Screen Operator Interface

CAP-PAC® Spout Applicator System

Inside-Out-Spout® Applicator

Spare Part Kits

Electric Branding Date Coder

Throttle Inlet Valve with High Low
Level Control

Automatic Lubrication Systems



NiMCO Corporation
Gable-Top Packaging Machinery System

Optional Equipment and Accessories

(Continued)

HEPA Air Filtration Units

Spray Sanitizing of Machine Components

Ultra Clean Systems

Hot Fill Capability

CIP - Clean in Place Components

Closed Loop Cooling Systems

Stainless Steel Chiller Units



NiMCO Corporation
Gable-Top Packaging Machinery System

2005-1

Carton Styles for NiMCO Machinery

Tetra Rex®



Pure-Pak®



CAP-PAC®



Klichlok®

CAP-PAC® Spout Systems

Tetra Rex™ Configuration

Pure-Pak® Configuration

Innovative Package Designs

Custom Packaging Systems



NiMCO Corporation
Gable-Top Packaging Machinery System

NiMCO Innovations

CAP-PAC® Spout Applicator System

Inside-Out Spout®

Energy Ring Configuration

L Bottom Carton Configuration

Stack Flat Carton

Ultrasonic Carton Sealing Systems



NiMCO Corporation
Gable-Top Packaging Machinery System

Food Applications

Liquid and Dry Products

Milk / Juice

Yogurt

Liquid Eggs

Ice Cream Mix

Soups / Sauces

Deli Salads

Fruits and Vegetables

Tea / Beer

Cereal / Granola

Potato Flakes

Snack Crackers

Nuts

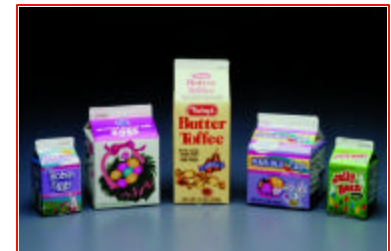
Powdered Drink Mix

Confectionery

Sugar / Salt

Seasonings / Spices

Candy



NiMCO Corporation
Gable-Top Packaging Machinery System

Non Food Applications

Liquid and Dry Products

Laundry Detergent

Fabric Softener

Paint

Shampoo

Skin Cleanser

Motor Oil

Wall Paper Paste

Tile Grout / Cement

Stucco Coloring

Ammunition

Pet Food Products

Kidney Dialysis Powder

Activated Charcoal

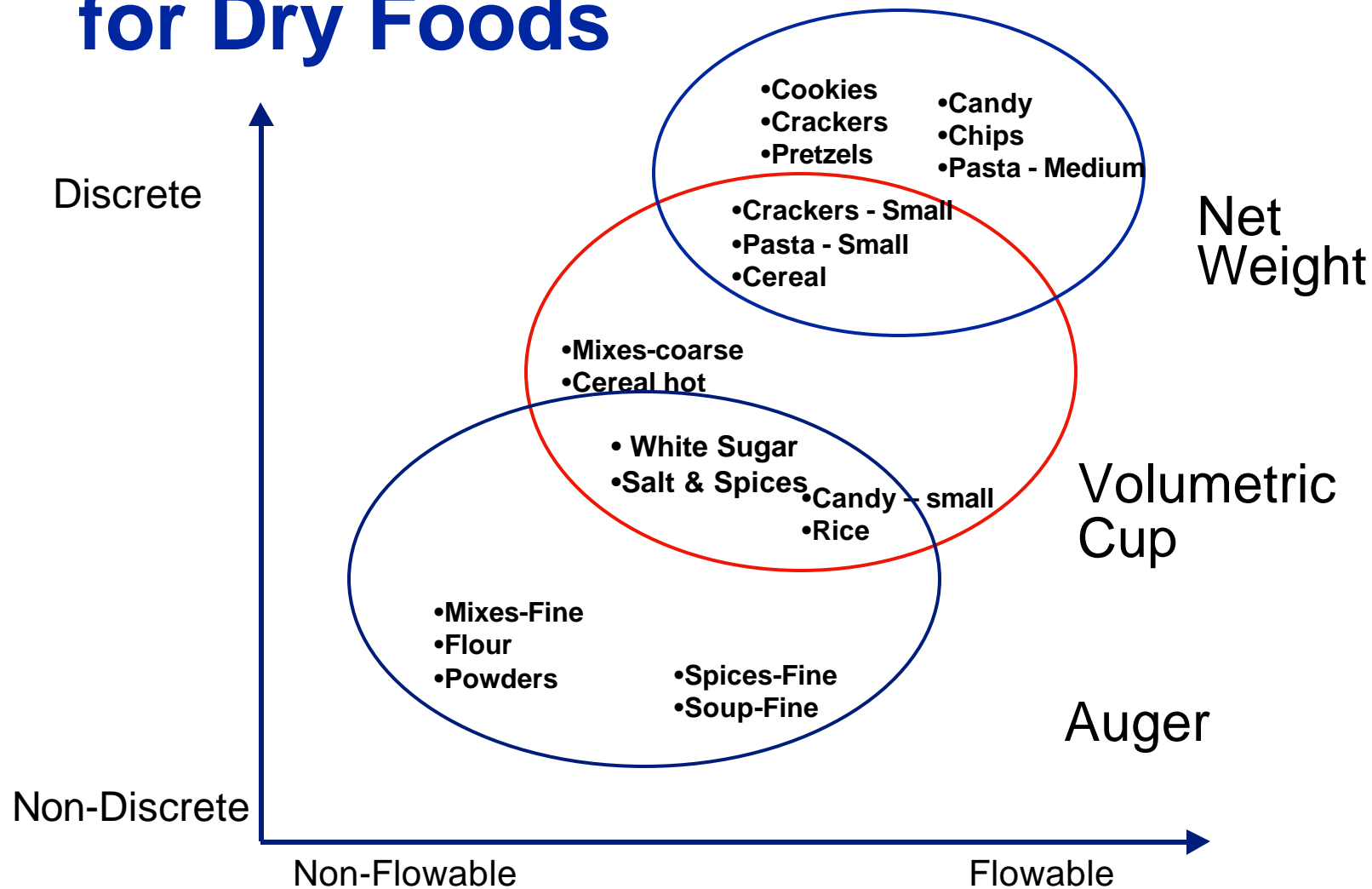
Epsom Salt

Herbicide Powder



NiMCO Corporation
Gable-Top Packaging Machinery System

Determining Auxiliary Fillers for Dry Foods



Available Filling Systems



Positive Piston



Time / Flow Meter



Volumetric Cup



Net Weight



Auger



Scale Filler



NiMCO Corporation
Gable-Top Packaging Machinery System

NiMCO Customers

Coca-Cola, USA

Danone, France

Dean Foods, USA

Megval, Greece

Isla Frigo, Mexico

Michael Foods, USA

Kellogg's, USA

Sigat, Romania

Million Land House, China

Parmalat, Brazil

Procter & Gamble, USA

SC Johnson, USA

Rich Products, USA

Tropicana, USA

McCormick, Finland

Yoplait (Sodima), France

Laticrete, USA



NiMCO Corporation

Gable-Top Packaging Machinery System

2005-1

Manufacturing Operations

Facility

Research & Development

Machining

Product Engineering

Purchasing

Material Control

Production Assembly

Spare Parts



NiMCO Corporation
Gable-Top Packaging Machinery System

2005-1

Critical Success Factors

Horizontal Management Structure

Strict Operational Procedures

Highly Skilled and Motivated Team Networking

Production Oriented Manufacturing Philosophy

Vertically Integrated Work-centers

Fully Integrated Machining Services



NiMCO Corporation
Gable-Top Packaging Machinery System

Facility

Total Property - 3 Acres

Opened 1998.

Total Building - 40,000 Sq. Ft.

- ✓ Assembly - 20,000 Sq. Ft.
- ✓ Materials - 5,000 Sq. Ft.
- ✓ Machining - 5,000 Sq. Ft.
- ✓ Inspection 5,000 Sq. Ft.
- ✓ Administration - 5,000 Sq. Ft.



NiMCO Corporation
Gable-Top Packaging Machinery System

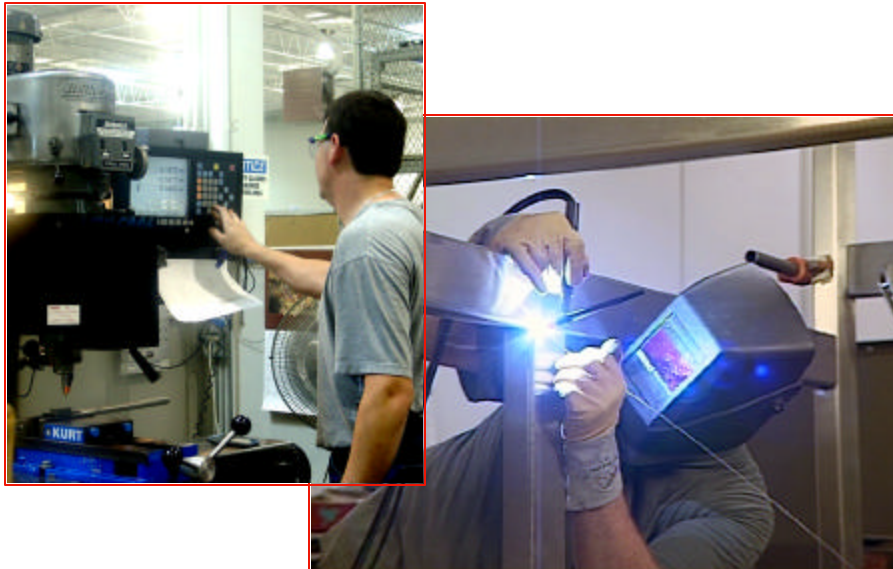
In-House Machining

Total Facility - 3,000 Sq. Ft.

Cad Design.

Design Optimization.

Engineering Support.



Horizontal Machining

CNC Grinding

CNC Turning

CMM Inspection

Food Grade Quality

CAD CAM

Programming

Prototype Services

Product Development



NiMCO Corporation

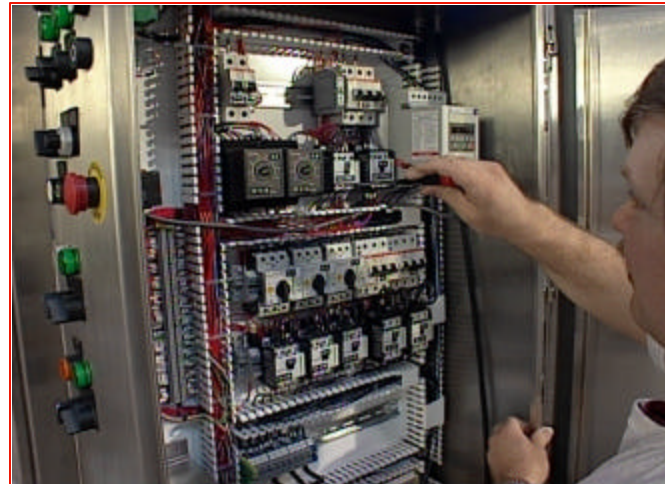
Gable-Top Packaging Machinery System

2005-1

Production and Assembly

Domestic & International
Production Facilities

- ✓ Non-union
- ✓ Vertically Integrated
- ✓ Multi-tasking Skill-sets
- ✓ Field Service Support



NiMCO Corporation
Gable-Top Packaging Machinery System

Spare Parts

Global Distribution of
Spare Parts

Same Day Shipment

Over 20,000 Parts in
Stock



NiMCO Corporation
Gable-Top Packaging Machinery System

2005-1

Value Added Services

Installation, Commissioning, Emergencies, and
Regular Maintenance

Custom Preventive Maintenance Programs

Resident Technician Program

Training

Painting, Coating and Finishing

Mig / Tig Welding

Warehousing

Packaging and Shipping



NiMCO Corporation
Gable-Top Packaging Machinery System

Development & Product Engineering

Product Research &
Engineering Development
Mechanical Design Engineering
Electrical Controls Design
Project & Product Development
Technical Documentation

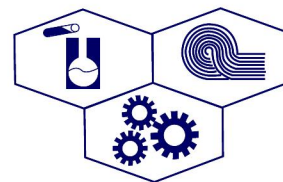
Concept to Commission
Design Optimization at
Component & Assembly Levels
3A Sanitary, CE, UL Standards
Din, ANSI, NEMA Standards
Knowledge and Conversion
Capability



NiMCO Corporation
Gable-Top Packaging Machinery System

2005-1

Represented By:



Arturo Casasola

12 Av. "B" 3-65, Zona 1. Residenciales "El Cerrito"

Aptdo. Postal 2307 Guatemala, C.A. 01001

PBX:	+(502) 2251 6863	E-mail: arturointerpack@gmail.com
Direct phone:	+(502) 2220 0379	Mobile phone: +(502) 5966 0644
Fax:	+(502) 2220 0379	