

# WE ASSEMBLE YOUR IDEAS

Electronic  
Manufacturing  
Services



# WHO WE ARE ?

- We are a Mexican company focused on providing manufacturing solutions for electronic assemblies.
- Founded in 2010 in Guadalajara, México.
- Committed to quality, with the constant search for innovation in our processes.
- Committed to the sustainability of our processes and products.



# WHERE WE ARE?

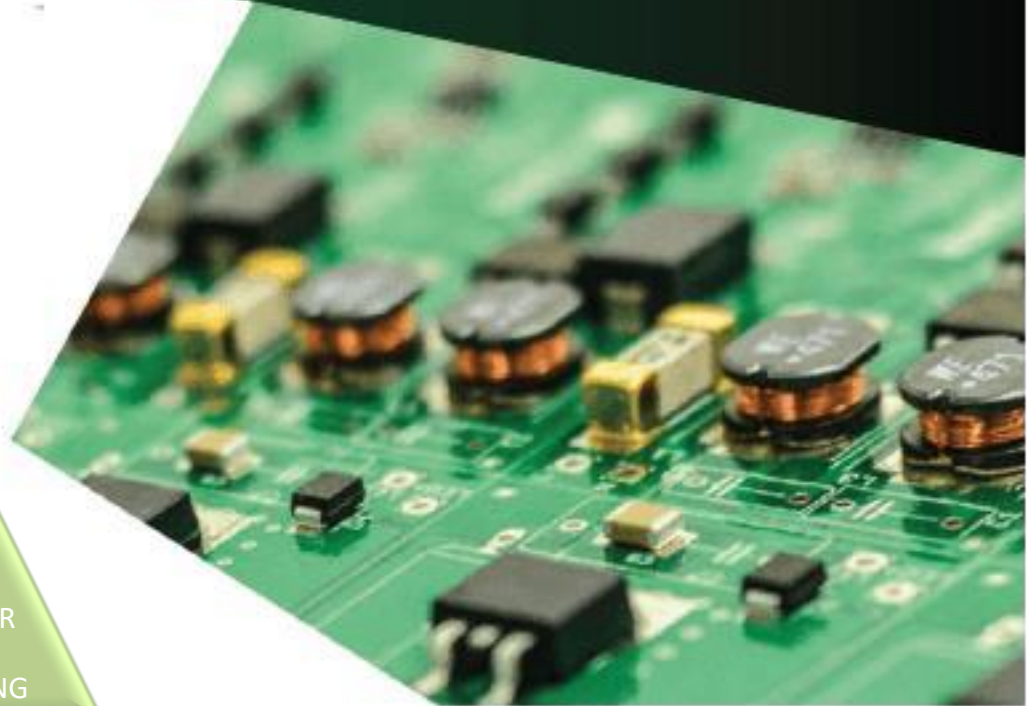
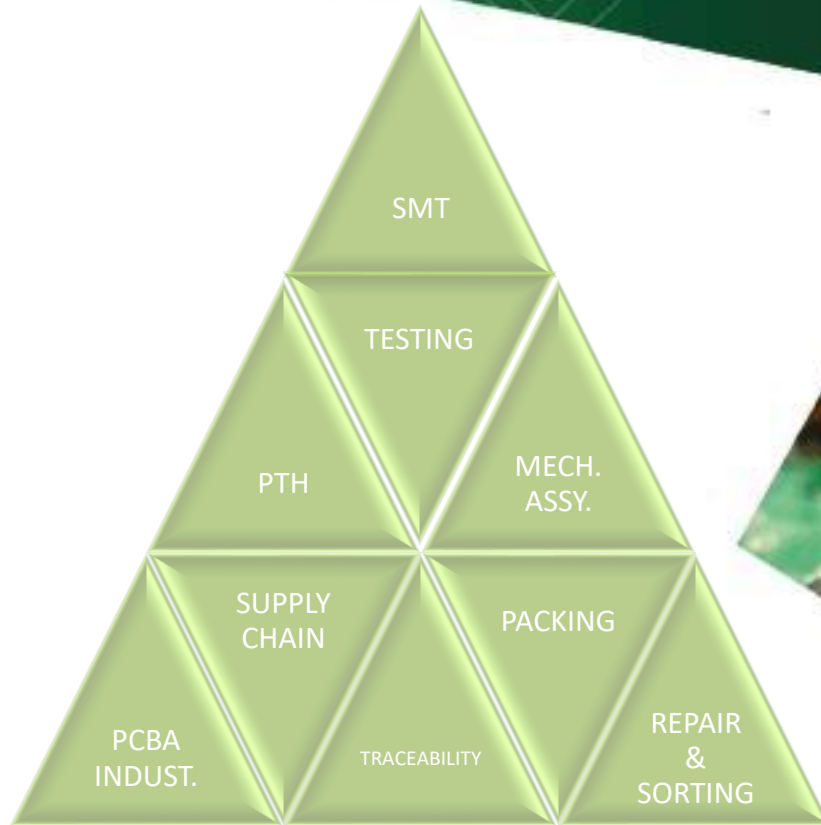


## FACTORY

Av. Vicente Guerrero 153 Col. Agua Blanca Industrial, Zapopan, Jalisco C.P. 45235.  
+52 (33) 3658 5563

# Our Services

Wide range of electronic manufacturing services and solutions to meet the high-mix, low-volume production needs of our customers.

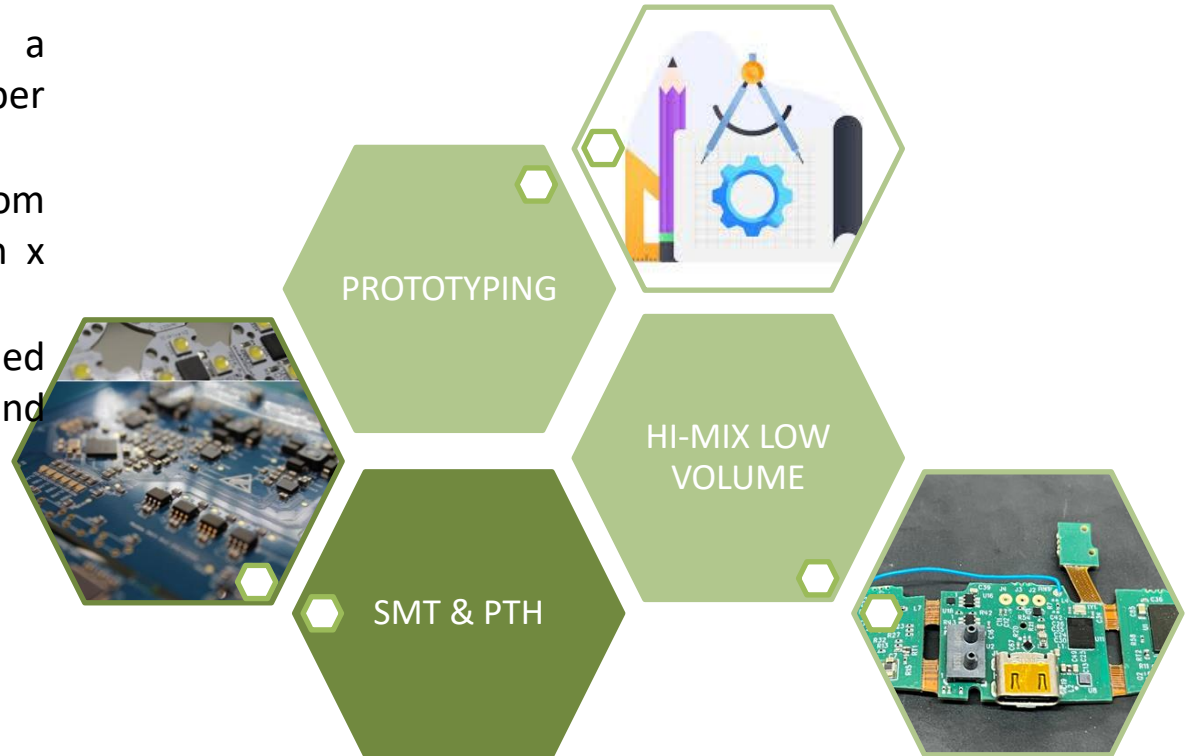




# ELECTRONICS ASSEMBLIE

We make electronic assembly in PCB's with SMT and PTH.

- Automated line of SMT with a capacity of 48,000 components per hour.
- Component dimensions from 0.4mm x 0.2mm up to 200mm x 110mm.
- Production line with qualified workforce for manual welding and manual montage of PTH.



# COMPLEMENTARY SERVICES

## PCBA INDUSTRIALIZATION

- New Products development.
- PCB Array design.
- FVT or specific test/assembly fixture
- Packing development.

## KITTING

## SORTING

## OTHER SERVICES

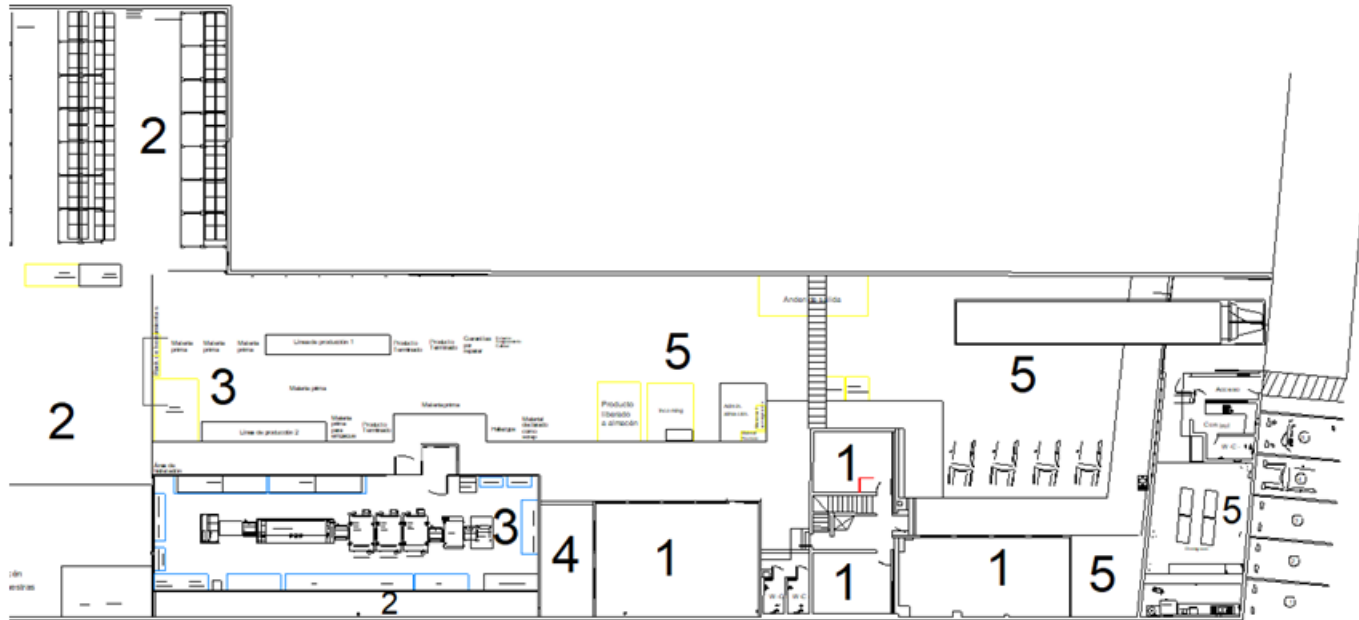
## TESTING CAPABILITIES

- Flying Probe
- Programming.

## MECHANICAL ASSEMBLY

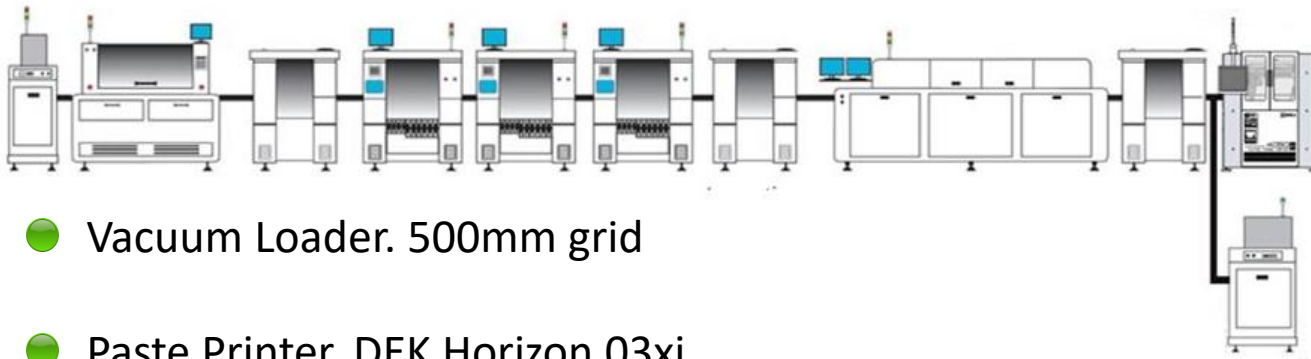
## 3D PRINTER DIMENSION ELITE

# FACILITIES



Zone	Description	Value
1	Offices	2,368ft <sup>2</sup> / 220m <sup>2</sup>
2	Warehouse	5,576ft <sup>2</sup> / 518m <sup>2</sup>
3	Production	6,963ft <sup>2</sup> / 647m <sup>2</sup>
5	Other	4,843ft <sup>2</sup> / 450m <sup>2</sup>

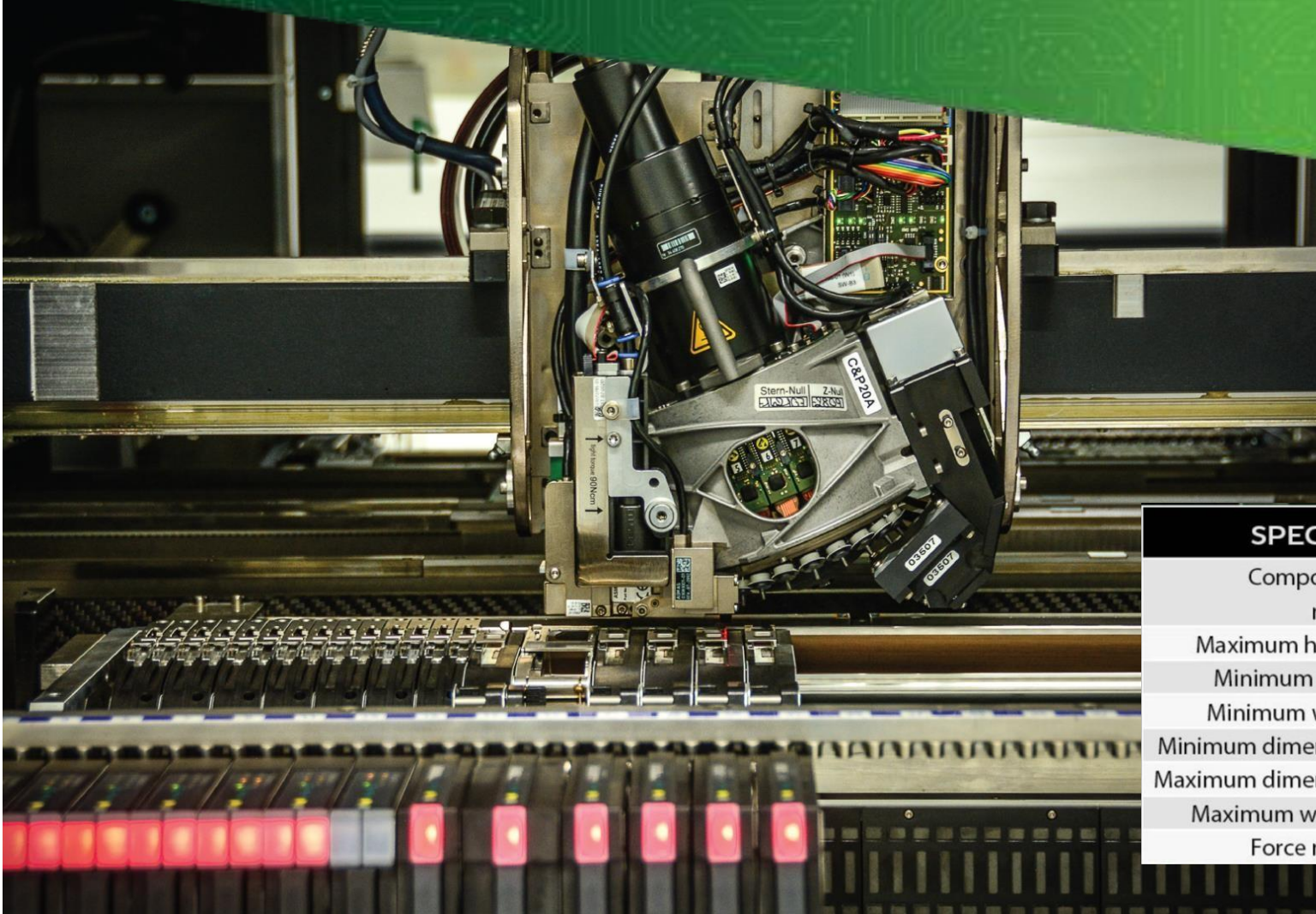
# TECHNOLOGY



- Vacuum Loader. 500mm grid
- Paste Printer. DEK Horizon 03xi
- Pick & Place 1. ASM CP20A
- Pick & Place 2. ASM CPP
- 1Pick & Place 3. ASM Twin Head, waffle tray loader.
- Reflow Oven. Vitronics Soltec XPM3i convection Oven.
- 3D-SPI , 3D-AOI
- Flying Probe SPEA 4050
- Off Line Functional Test



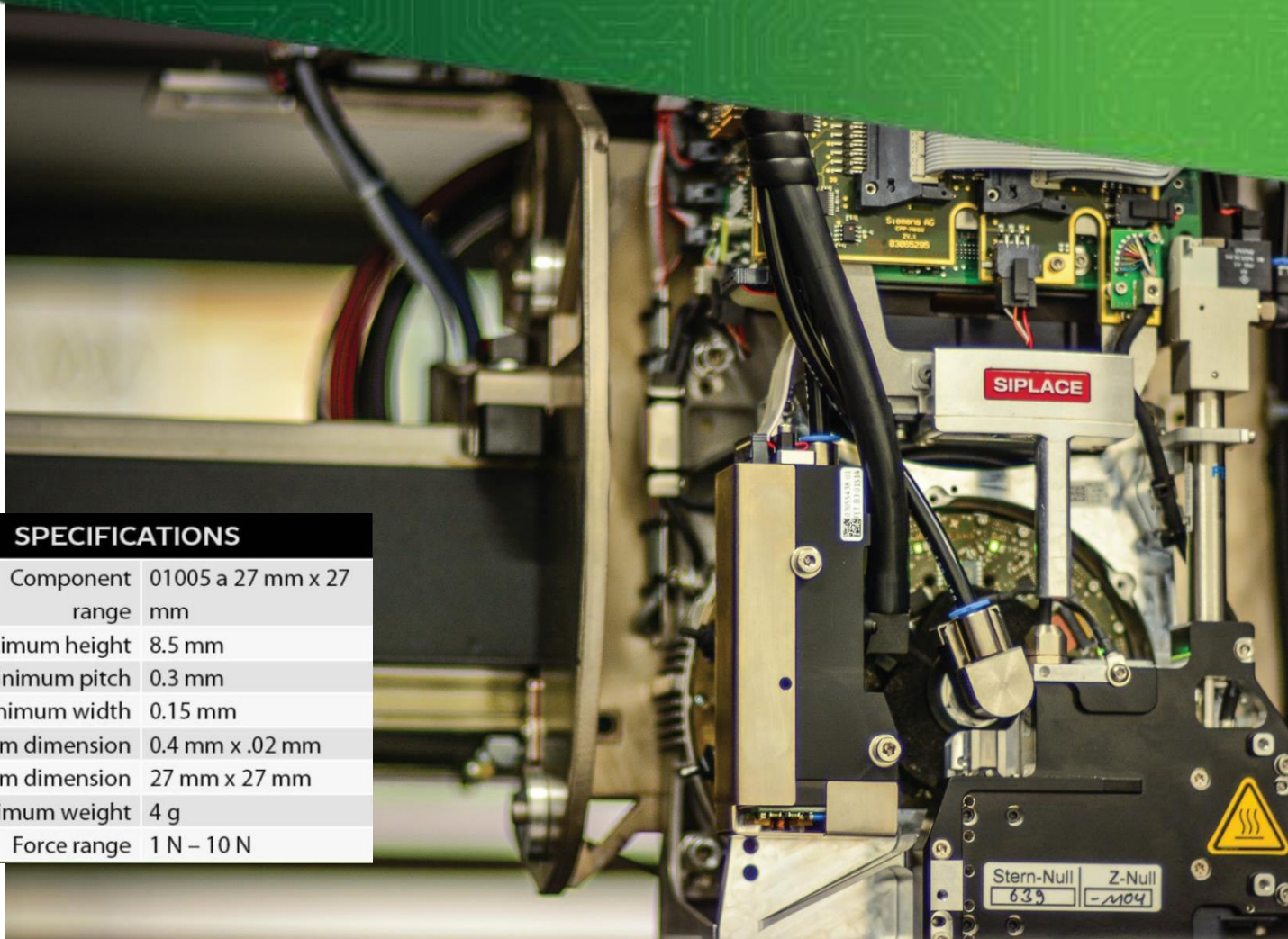
# Pick and Place CP20 cabezal



## SPECIFICATIONS

Component range	01005 a 2220, Melf, SOT, SOD
Maximum height	4 mm
Minimum pitch	0.25 mm
Minimum width	0.1 mm
Minimum dimension	0.4 mm x 0.2 mm
Maximum dimension	6 mm x 6 mm
Maximum weight	1 g
Force range	1.5 N – 4.5 N

# Pick and Place CPP cabezal

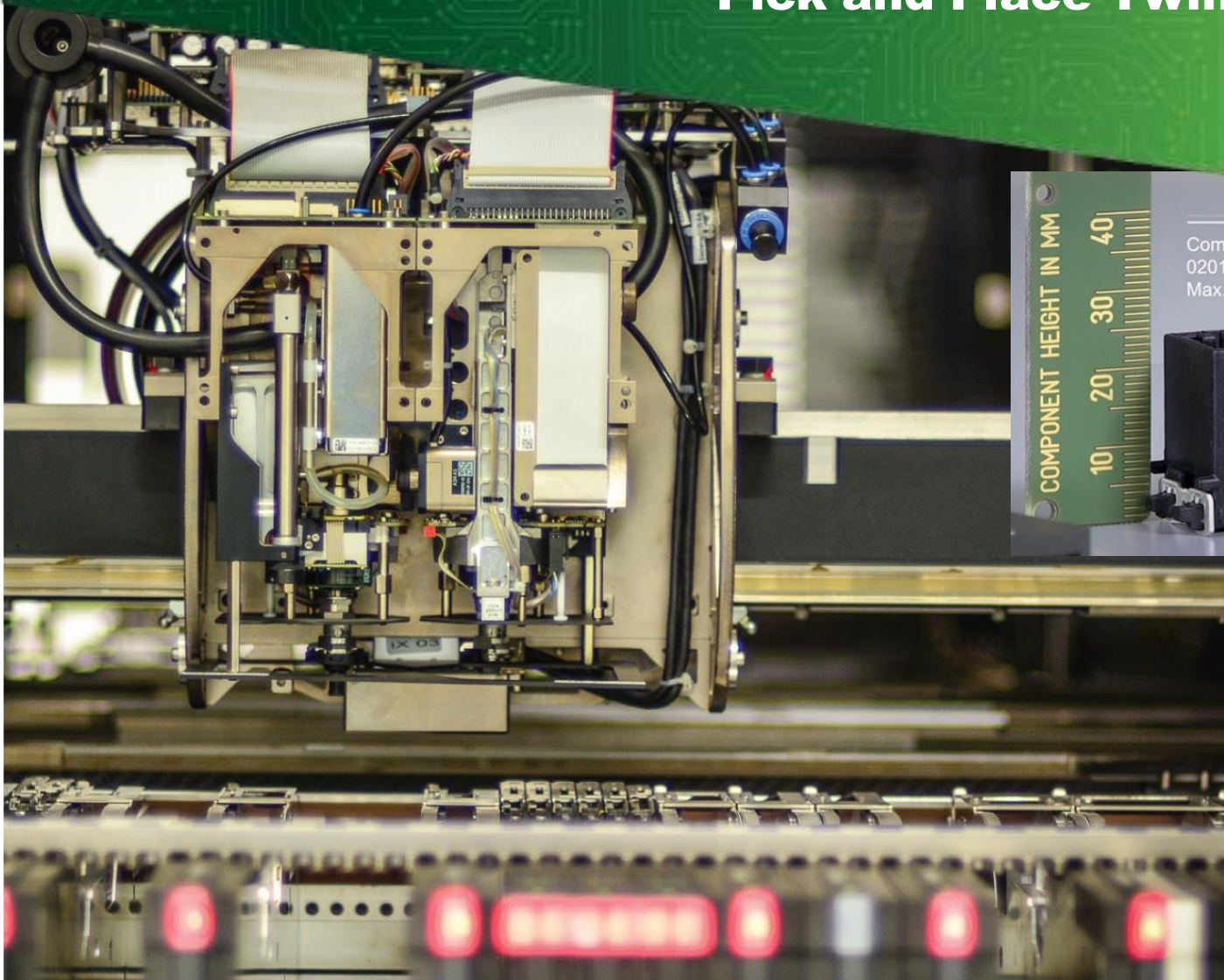


## SPECIFICATIONS

Component range	01005 a 27 mm x 27 mm
Maximum height	8.5 mm
Minimum pitch	0.3 mm
Minimum width	0.15 mm
Minimum dimension	0.4 mm x .02 mm
Maximum dimension	27 mm x 27 mm
Maximum weight	4 g
Force range	1 N – 10 N



# Pick and Place Twin-Head cabezal



Component spectrum  
0201 to 200 mm x 125 mm  
Max. component height: 25 mm

## SPECIFICATIONS

Component range	0402 a SO, PLCC, QFP, BGA, special components
Maximum height	25 mm
Minimum pitch	0.3 mm
Minimum width	0.15 mm
Minimum dimension	1 mm x 0.5 mm
Maximum dimension	50 mm x 50 mm a 200 mm x 110 mm
Maximum weight	100 g
Force range	1 N – 15 N
Waffley Fray	30 trays

# TECHNOLOGY



## Reflow Oven

Vitronics XPM3i reflow with 8 heating zones and 2 cooling zones.

The thermic profile is monitored through a KIC Explorer equipment with 8 thermocouple

# TECHNOLOGY



## SPI & 3D AOI

SAKI 3D AOI & 3Di SPI



## Microscope

Inspection microscope with a magnifying range of 1000x



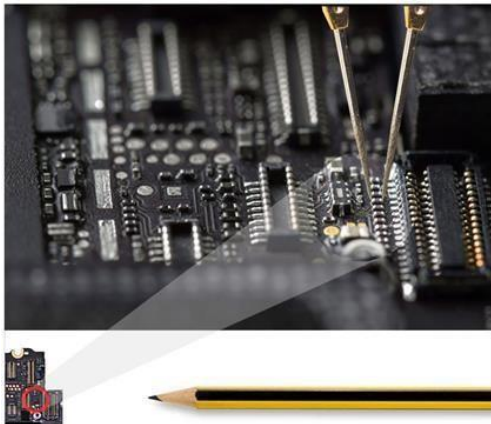
# TECHNOLOGY



## FLYING PROBE TESTER

The flying probe tester is expressly designed to replace bed-of-nails systems in the production test of SMT boards: It overcomes accessibility limits, offering high productivity, great flexibility and low cost of test in a compact footprint.

The overall cost of test is greatly reduced thanks to the minimized setup and maintenance costs: no fixture is required for contacting; the program generation from CAD data is a fast, automated process; the system setup is automatic and immediate, without requiring the presence of an operator since it is enough to load the test program for the product to be tested. The product component layout changes or modifications are not a problem, since it is enough to modify the test program accordingly.



# DEPANELIZATION



## LINEAL CUTS



## NON LINEAL CUTS



- Thickness 0.8 mm to 3.2 mm
- CEM, FR4 AND Aluminum PCB can be separated
- Stress reduction



# QUALITY CONTROLS



Management, packing, delivery and use of moisture sensitive components (ESD) according to IPC/JEDEC J-STD-033 regulations

Dry chamber to preserve the moisture sensitive components



Isolated mounting area according to antistatic control ANSI/ESD S20.20 regulations including a conductive floor

Moisture and temperature monitoring inside the automatic line SMT



The air is dust free. It is cleaned through a HEPA U15 filter

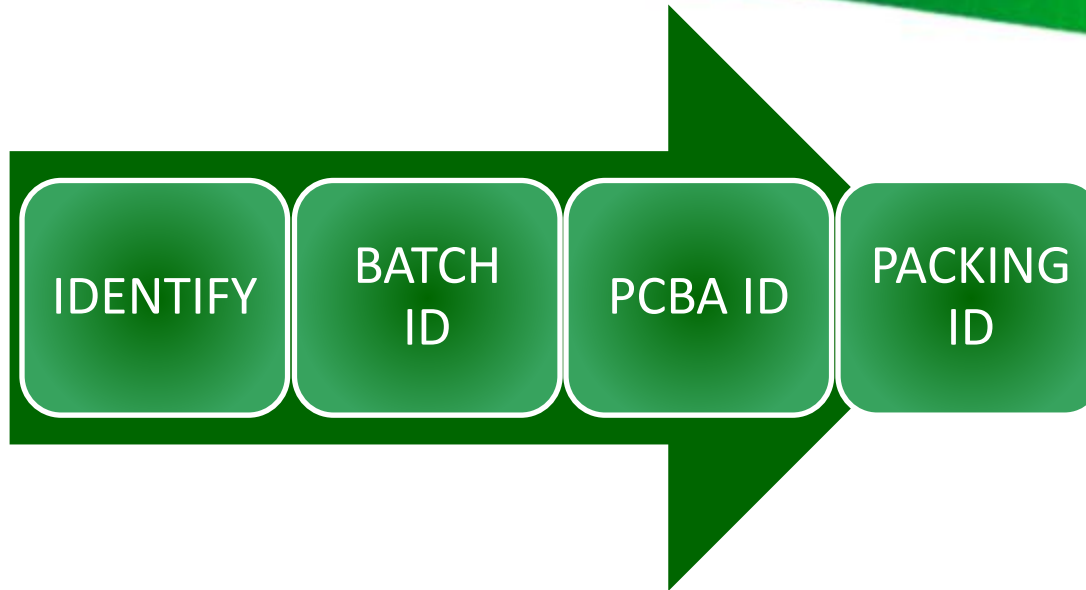
Control and records of manufacturing process

Control of shipment of finished goods through ERP Software

Traceability software in all components



# TRACEABILITY



- Component and Raw Material identification
- PCBA identification (job number)
- Assignment of component batch entry number to each job number
- PCBA labeling
- Packing Box serial number assignment

# Certifications



All the processes in KADLED are certified in ISO 9001 : 2015 standard.



**I M M E X**

KADLED has the IMMEX certificate to performance out foreign trade activities.



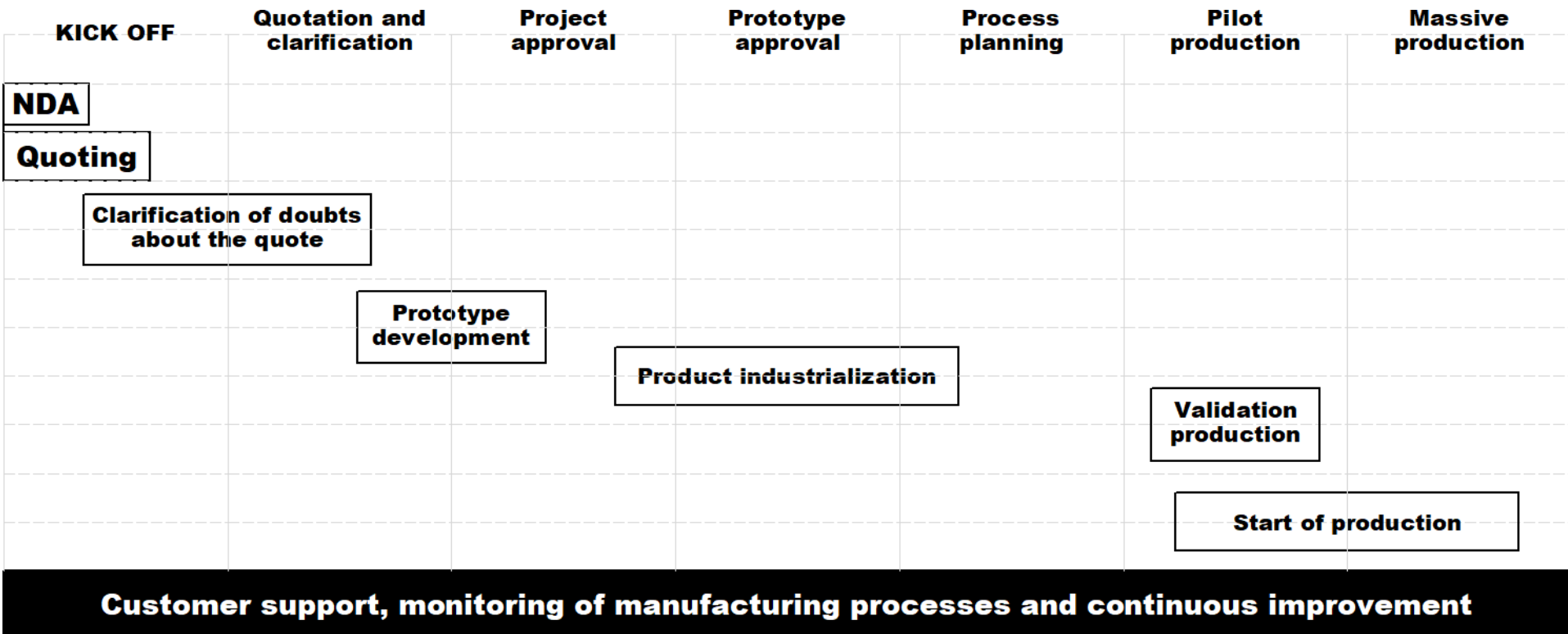
*Certified IPC-A-610*

Our staff is certified in the IPC-A-610 standard.

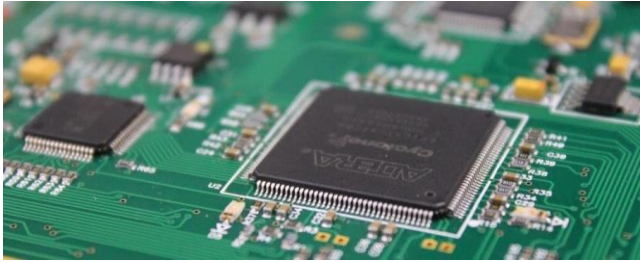




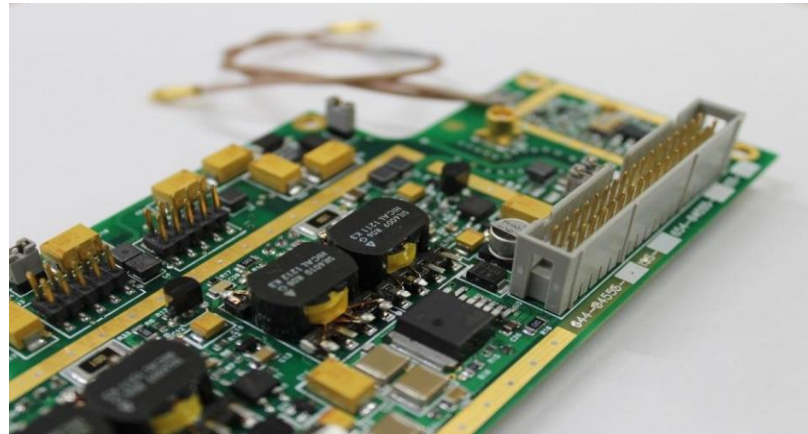
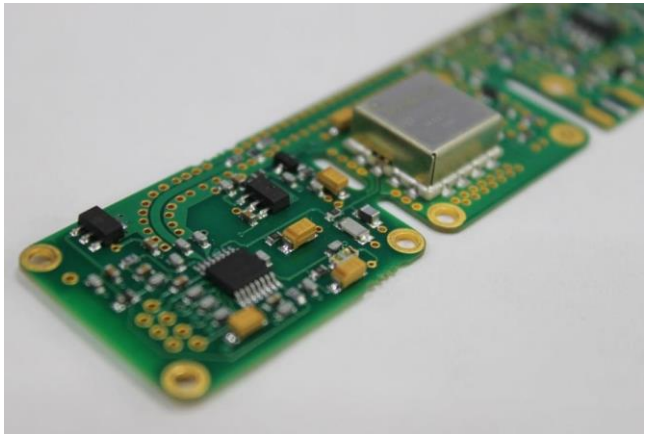
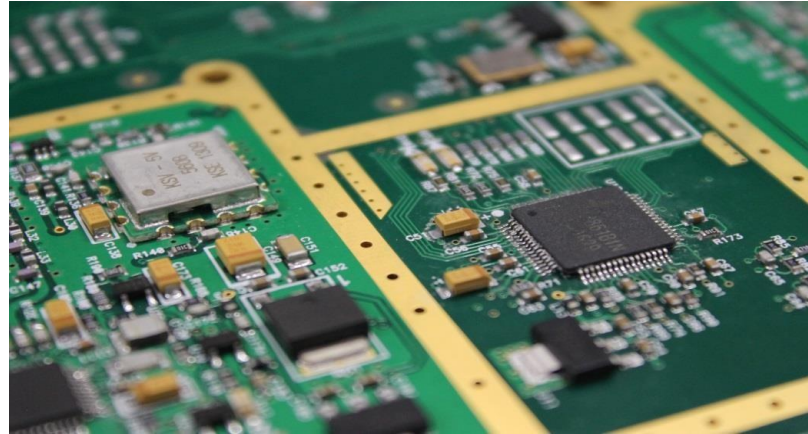
# PROJECT MANAGMENT



# SOME OF OUR ASSEMBLIES

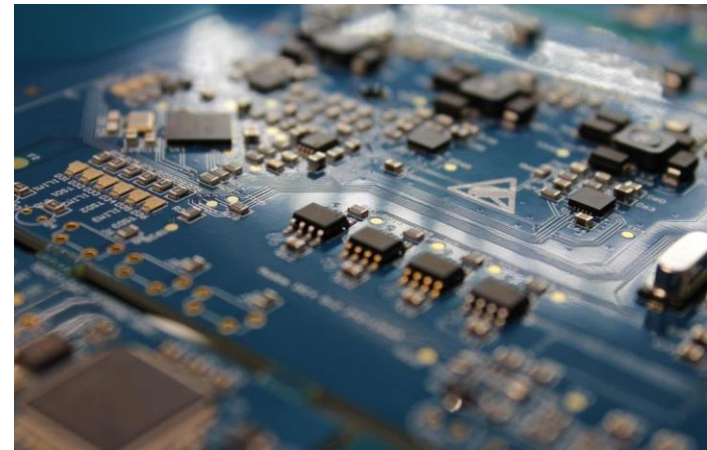
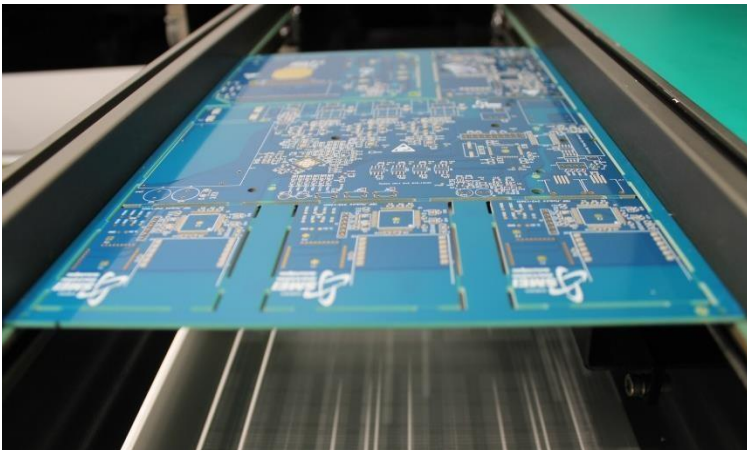
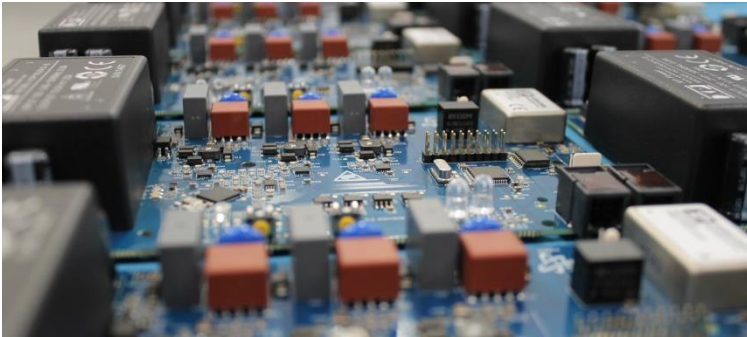


## TELECOMMUNICATIONS



# SOME OF OUR ASSEMBLIES

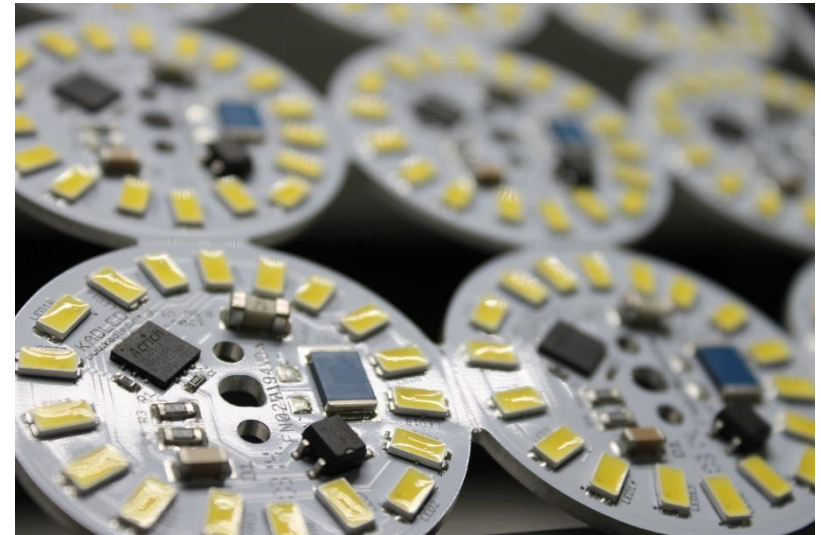
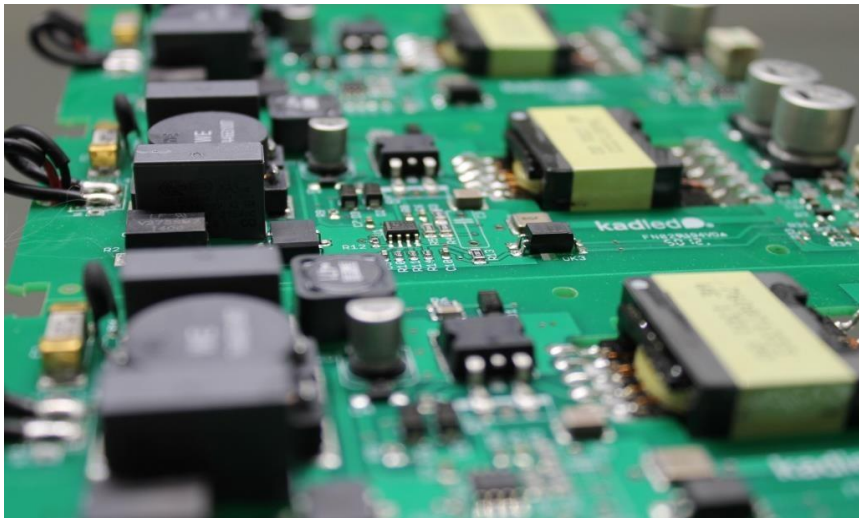
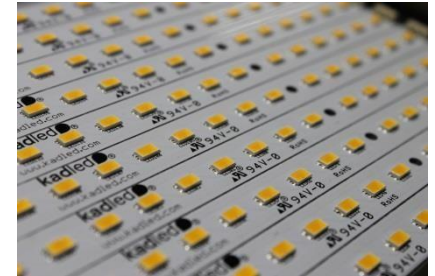
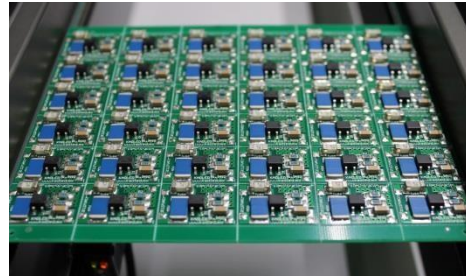
## CONTROL, METERING





# SOME OF OUR ASSEMBLIES

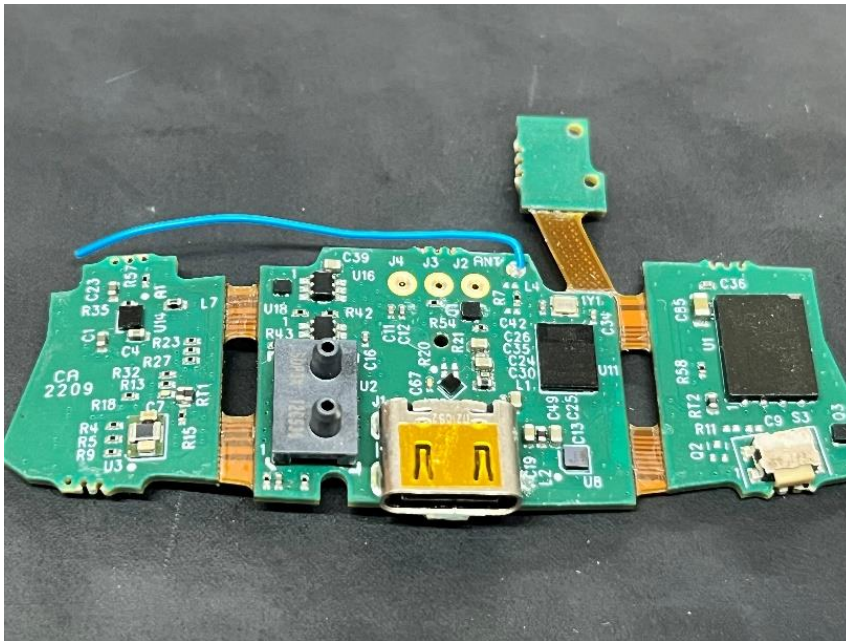
## LED's and Power Supply



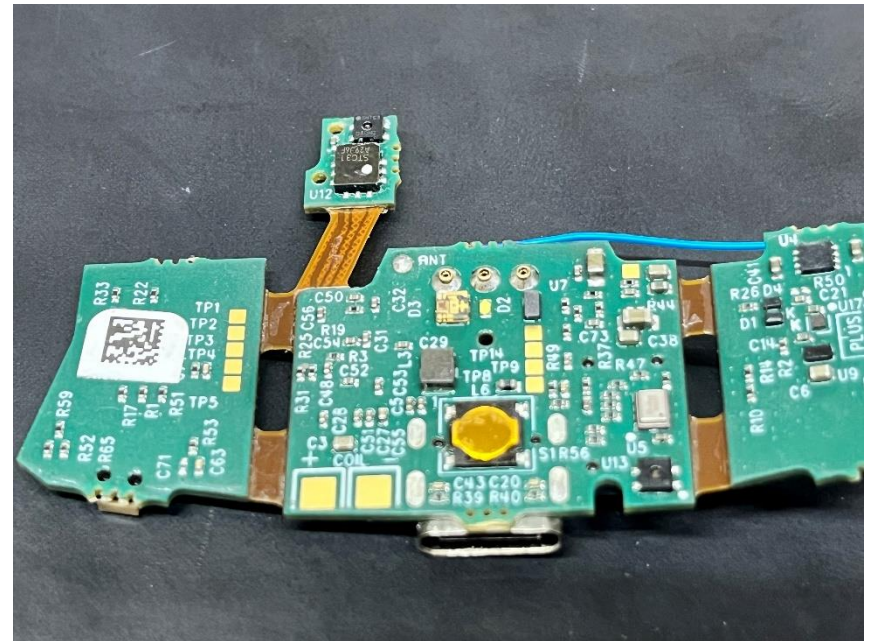
# SOME OF OUR ASSEMBLIES

## HEALTH PROJECTS

Ready for sensors and connections



Special PCBs sharps





# SOME OF OUR ASSEMBLIES

## IoT Projects



# SOME OF OUR ASSEMBLIES

## Box Build

We bring the materials and create sub-assemblies until we complete the finished product.

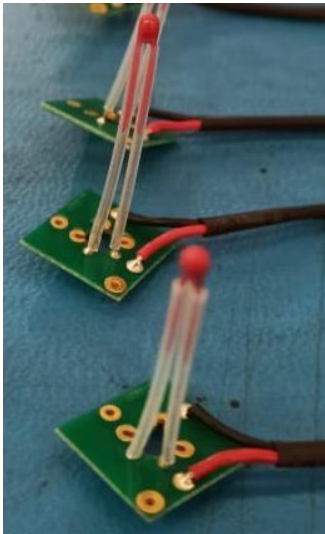
- 1 Optics
- 2 LED modules
- 3 Metallic parts
- 4 Die-cut pieces
- 5 Extruded parts
- 6 Power supply



# SOME OF OUR ASSEMBLIES

## Box Build

Assemblies with special applications  
in the terminals of the components  
(silicon tubing)

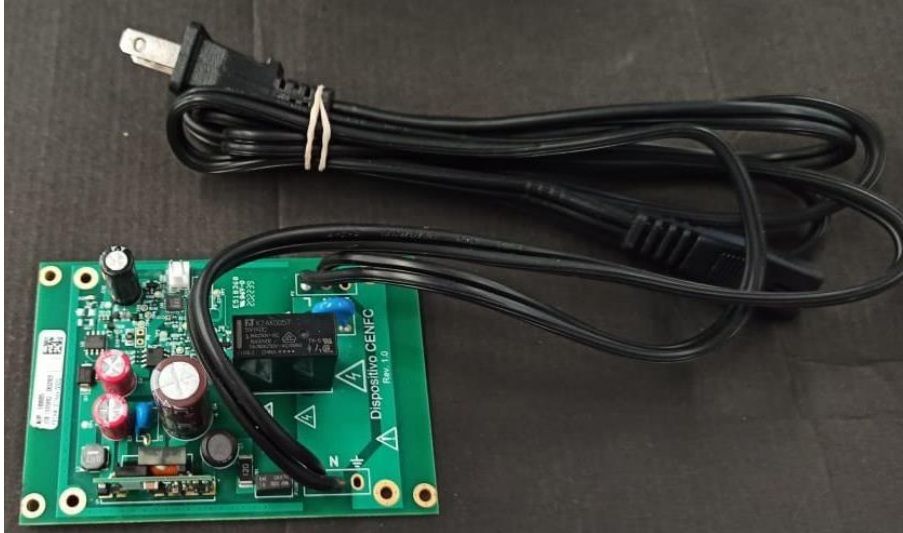


Cable assemblies welding to  
antennas

# BOX BUILD

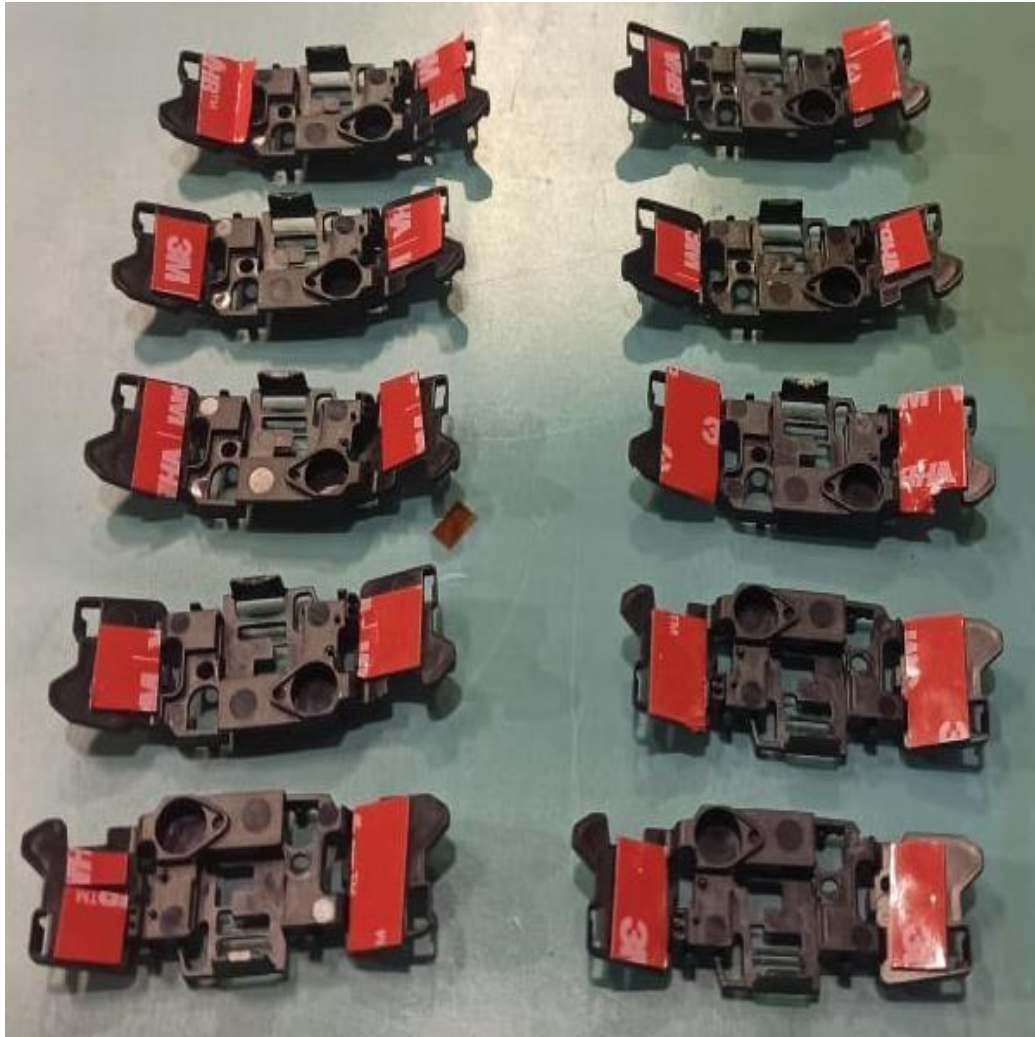
Assemblies with cables of various gauges,  
colors and lengths.

Even the packaging is special





# BOX BUILD



Plastic parts with adhesive applications.



[www.kadled.mx](http://www.kadled.mx)



FACTORY



Av. Vicente Guerrero 153 Col. Agua Blanca  
Industrial, Zapopan, Jalisco C.P. 45235.



+52 (33) 3658 5563



[facebook.com/kadled](https://facebook.com/kadled)



[@kadledmexico](https://twitter.com/kadledmexico)