



# KOSFS INTERNATIONAL SRL

**YOU CAN BUILD IT THIS WAY!**

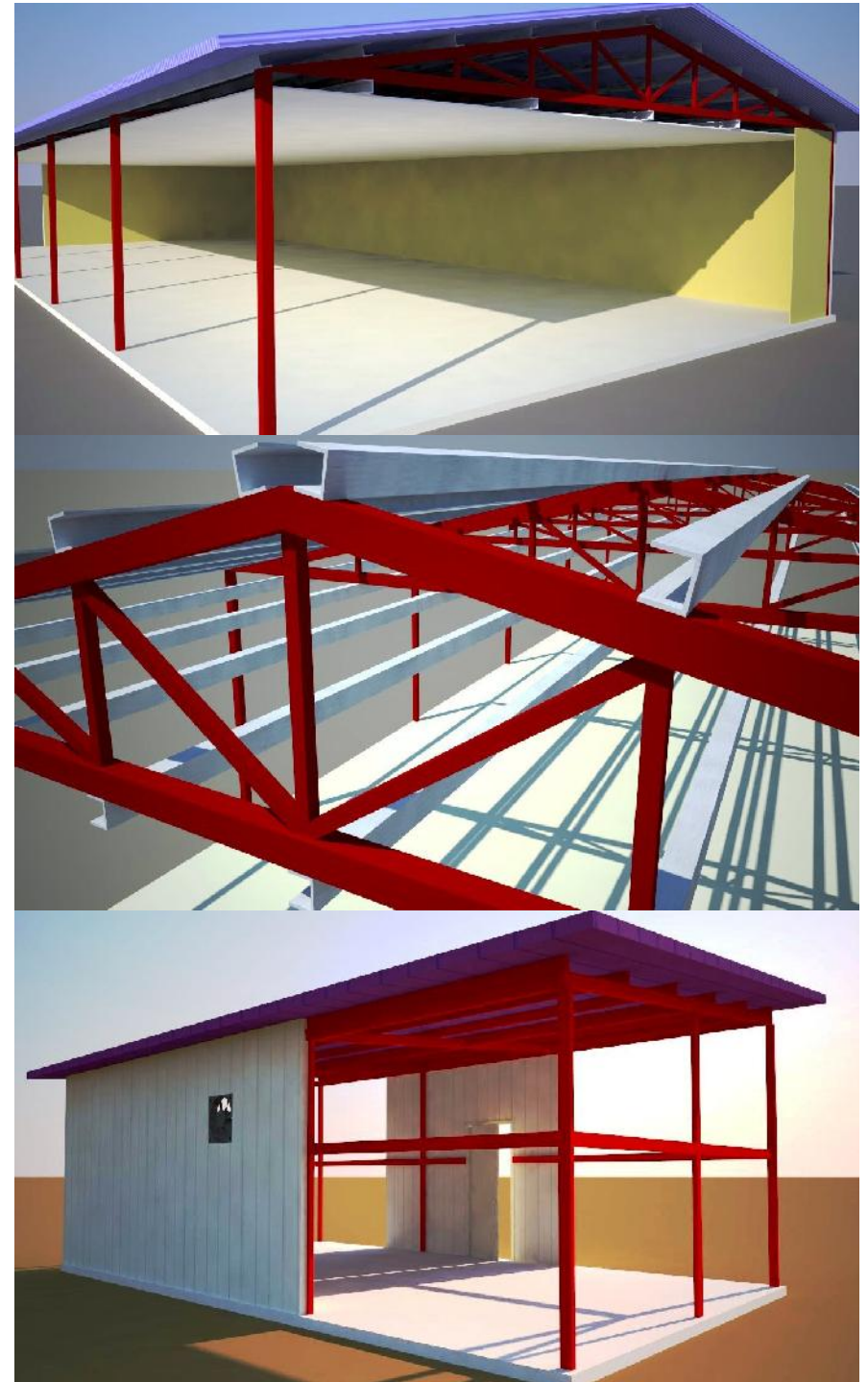
[www.kosfsbbs.com](http://www.kosfsbbs.com)



# ABOUT US

KOS FS International S.R.L. was founded in 2001, in La Romana, Dom. Rep. by entrepreneur MR. WOO SHIN, a Korean business man with a BROAD OVERVIEW OF THE SCOPE that could be the CONSTRUCTION OF PREFABRICATED HOUSES, following the devastation caused by Hurricane George.

This construction system has the ADVANTAGE of being able to provide adequate housing at a LOWER COST than the traditional construction system with the SPEED it deserves when an EMERGENCY OR DISASTER OCCURS.



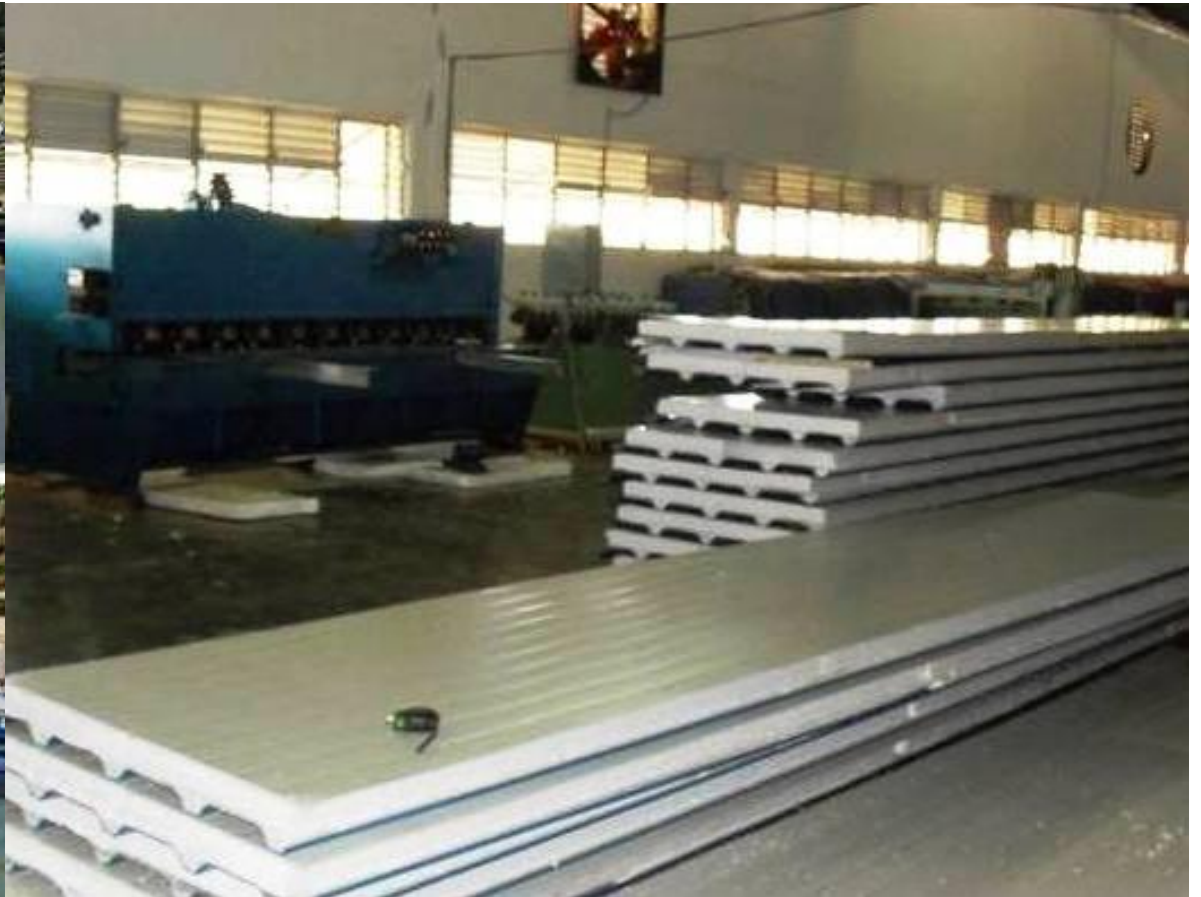


# PRODUCTS

1 – PREFABRICATED HOUSES USING SANDWICH PANELS

2 – PVC DOORS

3 – PVC WINDOWS



# THE HOUSES

## Overview:

- Prefabricated homes using sandwich panels.
- Metal structure.
- Sandwich Walls.
- Corrugated roof panel with insulation.
- Sizes from 30m<sup>2</sup> to 200m<sup>2</sup> and even more.





# DOORS & WINDOWS MADE IN PVC

The DOORS & WINDOWS are made in PVC FRAMES, DIFFERENT CALIBER GLASS, depending its use and SCREEN FOR INSECT PROTECTION.

The windows are made in 3 different models:

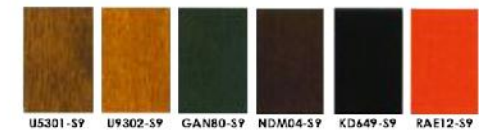
## SLIDER – CASEMENT - AWNING

### WINDOW FRAMES COLOR LIST

#### INSIDE COLOR



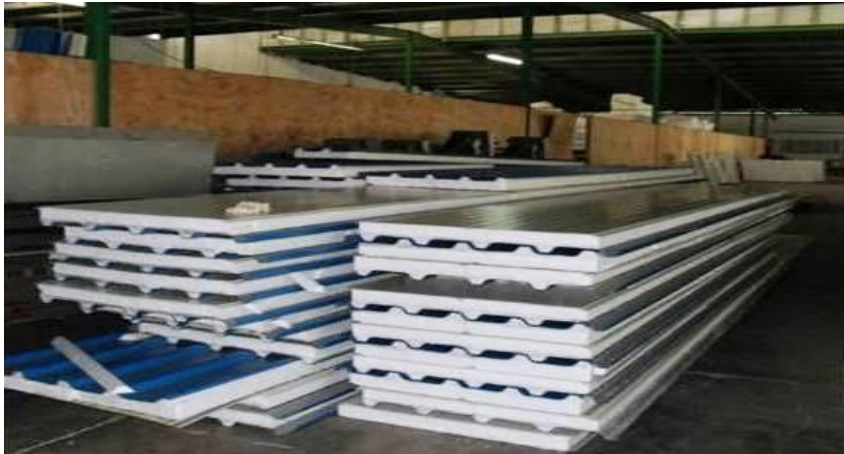
#### OUTSIDE COLOR



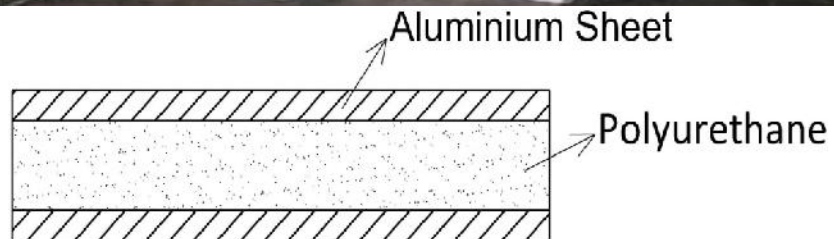
#### STANDARD COLOR



# PROPERTIES OF THE PANEL



The sandwich panels consist of two sheet metal liners joined together by an insulating layer of polyurethane.



Sandwich Panel

**Plate width: 41 inches**

**Length: controlled or adjusted** to the need

These panels **have designs depending** on whether they will be **used as walls or roofs**.

A **variety of colors** to choose from.

The **thickness of the polyurethane**, is a **useful barrier** against the loss of heat in the winter and the gain of heat in the summer.

**Fire resistant**







## THE FACTORY

Our factory has a SURFACE AREA of 15.000 M2.

EQUIPPED with the Latest Technology in MACHINERY for such purposes.

LOCATED in LA ROMANA II INDUSTRIAL FREE ZONE.



# MODEL HOUSES

CURRENTLY WE HAVE BUILT 3 MODEL HOUSES FOR EXHIBITION. THESE HOUSES ARE LOCATED IN KM 10, CUMAYASA, LA ROMANA, R.D.

## 1 – 60 M2 HOUSE

2 BEDROOM, LIVING – DINING ROOM, KITCHEN, 1 BATHROOM.

## 2 – 80 M2 HOUSE

2 BEDROOMS, LIVING – DINING ROOM, KITCHEN, 2 BATHROOMS

## 3 – 120 M2 HOUSE

3 BEDROOMS, LIVING ROOM, DINING ROOM, KITCHEN, 2 BATHROOMS, LAUNDRY ROOM.







- Autovía del Este
- Land Plot

## LOCATION OF THE MODEL HOUSES

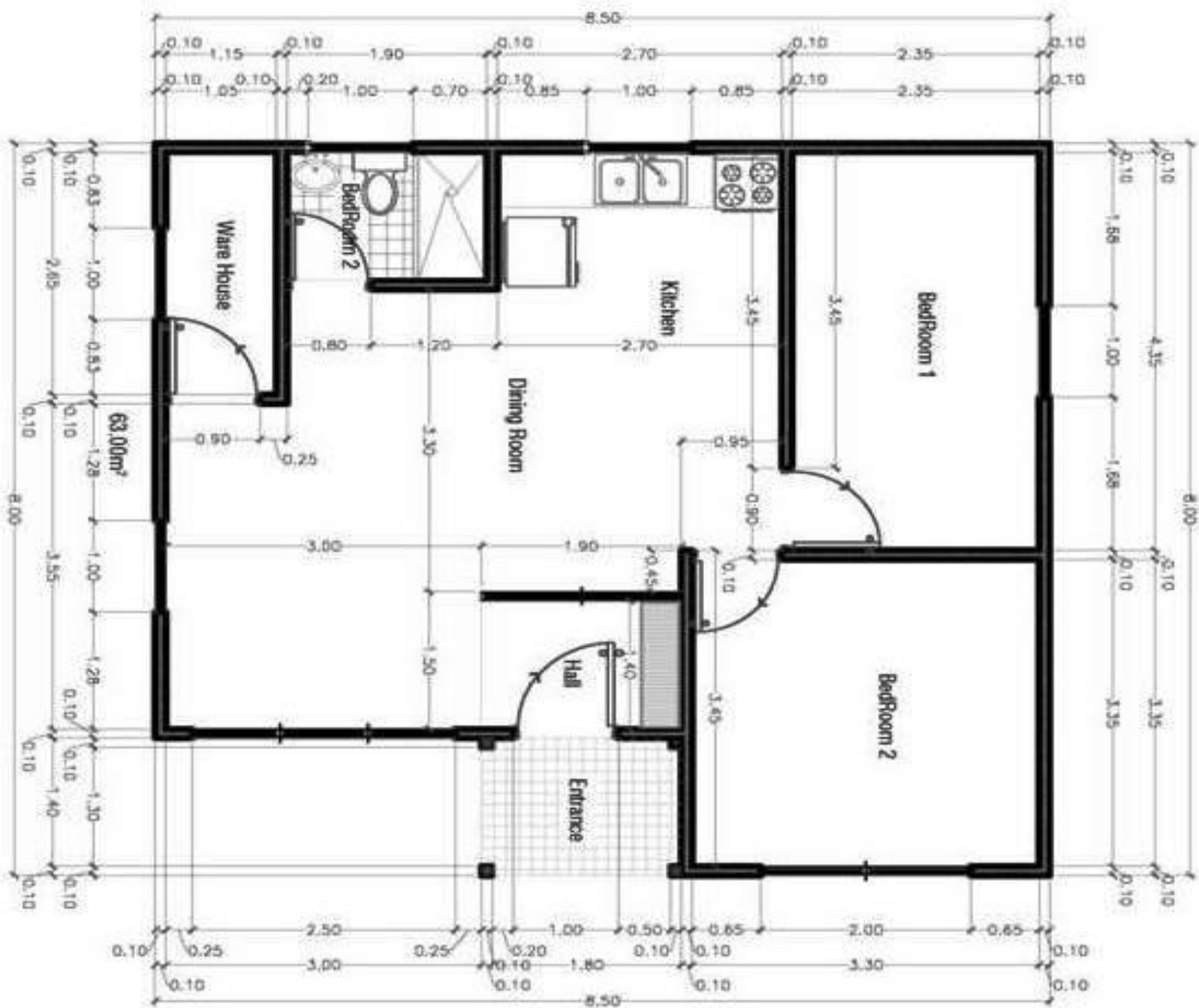




## **1 – 60 M2 HOUSE**

2 BEDROOM, LIVING – DINING ROOM, KITCHEN, 1 BATHROOM.



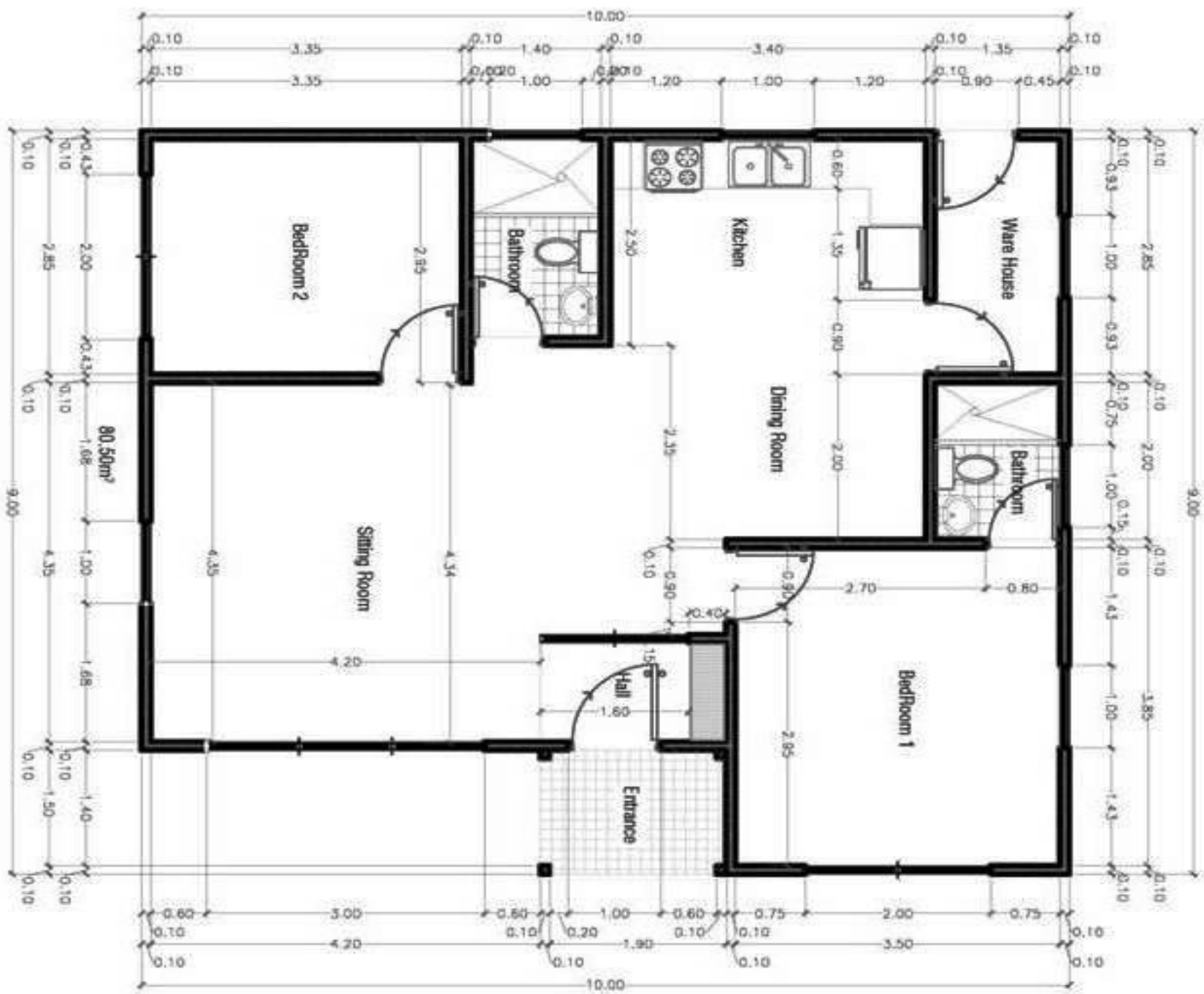




**2 – CASA DE 80 M2**

2 BEDROOMS, LIVING – DINING ROOM, KITCHEN, 2 BATHROOMS



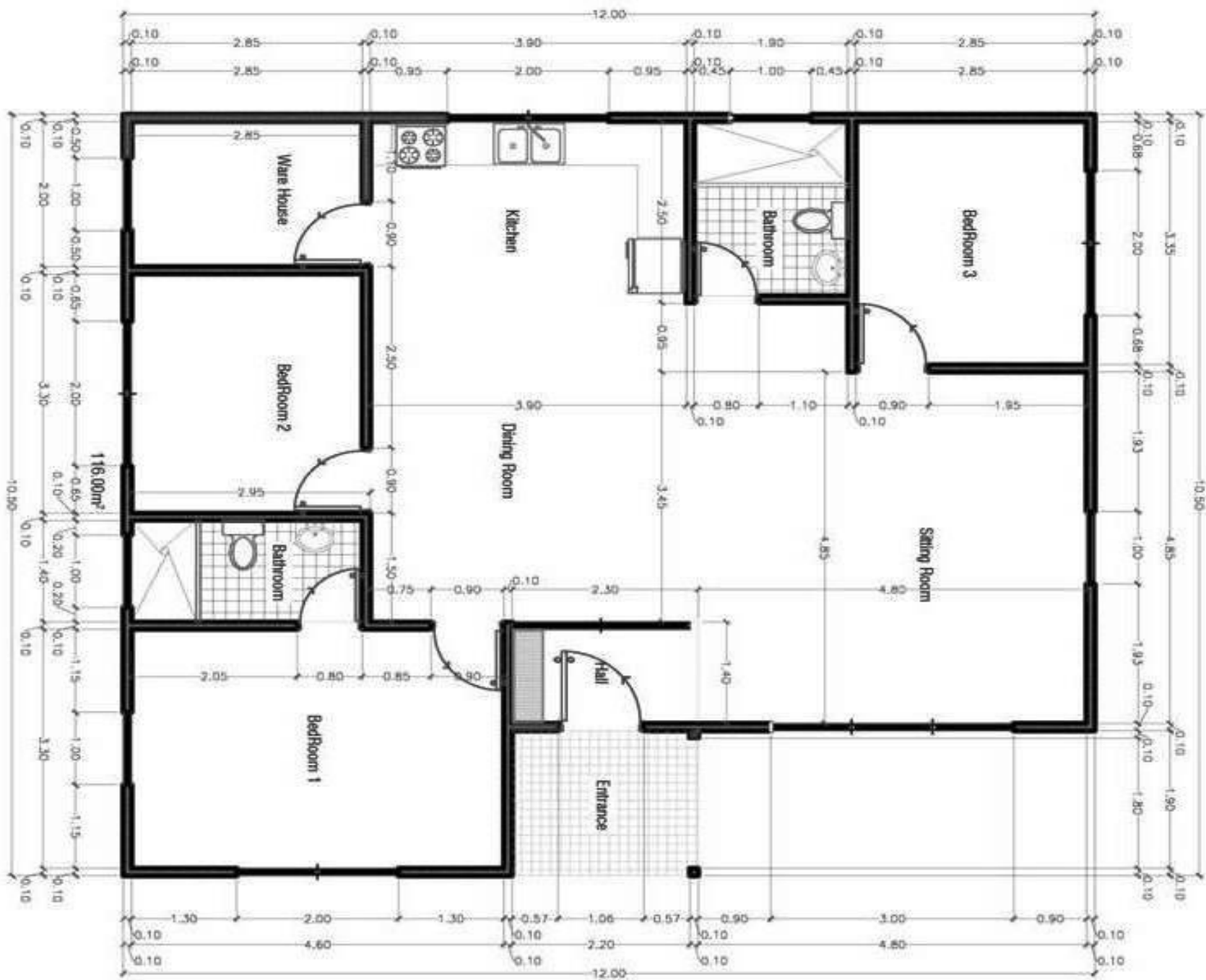




### **3 – CASA DE 120 M2**

3 BEDROOMS, LIVING ROOM, DINING ROOM, KITCHEN, 2 BATHROOMS, LAUNDRY ROOM.





# PHOTOGRAPHS



MODEL HOUSE - INTERIOR





# PHOTOGRAPHS



THE FACTORY [MACHINES / PANELS]

# PHOTOGRAPHS



THE FACTORY [MACHINES / WINDOWS]



# OTHER PROYECTS

## DOORS & WINDOWS





# OTHER PROYECTS

## YOUTH CENTER HAITI [HAITI]





# OTHER PROYECTS

## CHURCH [SANTO DOMINGO]



# OTHER PROYECTS

## OFFICE [HAITI]





# OTHER PROJYECTS

## SCHOOL [HAITI]



# OTHER PROYECTS

## TOILETS [DOMINICAN REPUBLIC

BATEY #16\_SIMPLE TOILETS





# OTHER PROYECTS

## TOILETS [DOMINICAN REPUBLIC]

BATEY #16 DOUBLE TOILETS



# OTHER PROYECTS

## OFFICES [DOMINICAN REPUBLIC]

### HIGUEY







**FUTURE PROYECT KOSfs INTERNATIONAL**

# CONTACT US

**WOO SHIN (PRESIDENT)**

PHONE: 809-813-0724 / CEL: 809-259-1009  
korswy@hotmail.com

**BYONG SONG (GENERAL MANGER)**

PHONE: 809-813-0724 / CEL: 809-259-1061  
ambysong@gmail.com

**ERVIN QUEZADA (ARCHITECT)**

PHONE: 809-813-0724 / CEL: 829-259-1099  
e.quezada@kosfsbbs.com

[www.kosfsbbs.com](http://www.kosfsbbs.com)



**KOSFS INT'I**

