



A stylized icon consisting of two overlapping grey parallelograms, one slightly offset from the other.

Summary

- 03** The Company
- 04** Main Tasks in Argentina
 - Main Tasks in Latin America
 - Main Tasks in the World
 - Trade References
 - Bank References
- 05** Our Clients
 - Our History
- 06** Our Industrial Plant Bernal
- 07** Turnkey Plants
- 08** Storage Plant and Feed Mill, Turen - Portuguesa, Venezuela
- 09** Premises for Latin American Poultry Exhibition, Santa Cruz de la Sierra, Bolivia
- 11** Hatchery, Riojanas Farms, La Rioja, Argentina
- 12** Sheds, Design and Construction Integrated Farms
- 13** Adequacy, preparation and construction of the Farms
- 14** Our farms in Latin America and the World
- 17** Some destinations productive of our structures

A stylized icon consisting of two parallel, slanted lines, one grey and one red, forming a chevron-like shape.

Who We Are

Private Enterprise

Metallurgical

Argentina,

Oriented industrialization:

- Construction
- Plant Storage and Processing of Agricultural Production

A stylized icon consisting of two parallel, slanted lines, one grey and one red, forming a chevron-like shape.

Our Criteria:

Us are included in membership Groups:

- Productive Business Sets different value chains.

Analyze the main needs of these groups.

Try to give solutions with multidisciplinary teams.

We strive to be:

- Respectful,
- Careful,
- Relevant.

We ensure that there is consistency between what we say and do.

A stylized icon consisting of two parallel, slanted lines, one grey and one red, forming a chevron-like shape.

Groups of Belonging:

Customer Value Chain:

- Argentina Poultry
- Latin American Poultry
- World Poultry
- Latin American agricultural production

Vendor Value Chains:

- Steel and other building materials.
- Metalworking light and heavy
- Robotics and Industrial Automation

Companies:

- Argentina
- Latin
- World

Main Tasks in Argentina:

a) Contribute to Increase Argentine external surplus, exporting:

- Poultry houses, swine and other animals.
- Equipments of these sheds.
- Design and Construction of Farms
- Design, Procurement and Construction of Plants:
 - Feed manufacturing
 - Storage of Cereals and Flours
 - Processes of food processing industries.

Turnkey Export All these buildings and facilities.

b) Create Employment in the Country.

c) Promote the Productive Integration, Trade and Social with Latin America.

d) Provide the Industrial Development and Social in Argentina.

e) To position Argentina as a technology solutions provider of high added value in the region and the world

Main Tasks in Latin America:

Develop.

Trying to Prevent only raw material exports.

Defender Latin American Industrial Exports Increase.

In Latin America provide Capital Goods, vital to the development of each country.

Main Tasks in the World:

Contributing to Industrialization:

- Construction.
- Plant Storage and Processing of Agricultural Production.

Trade References

Siderar
Acindar

Bank References

Banco de la Nación Argentina
Banco Credicoop

Our Clients

- Republica Bolivariana de Venezuela, MPP Agricultura y Tierras- CVAL
- PDVsa
- Gobierno de la Provincia de La Rioja, Argentina, SAPEM Granjas Riojanas, SAPEM Cerdo de los Llanos.
- Avicola Sofía, Sta. Cruz de la Sierra- Bolivia
- Protinal-Proagro, Venezuela
- Grupo La Caridad, Venezuela
- Granja Tres Arroyos, Argentina
- Pollolin, Argentina
- Grupo San Fernando, Perú
- Cargill, Tip Top, Nicaragua
- Cargill, Alcon Honduras
- Pillgrims México
- Grupo Alvorada, Brasil
- Guaraves, Brasil
- Avicola Chorombo, Chile
- Holding Leong Hup, Malasia, Indonesia, Filipinas
- Grupo Melo, Panamá
- Toledano, Panamá
- Pollo Cibao, Rep Dominicana
- Bahamas Food, Bahamas
- Cobb Vantress, Estados Unidos de Norteamérica

Our History

Ours is a family business that has been dedicated to the items Metallurgical and Building since 1960.

We've known for being innovative and create products to meet the needs of production and economic development will pose to our societies.

The relevance of our analyzes and proposals, the excellent quality of our products and the decision to work for large groups more productive, has positioned us as American and world leaders in our field.

We have the flexibility to have different own complementary areas:

- Metallurgical Company, a modern industrial plant of 6,000 m2, equipped with robotic welding lines.
- Technical and Procurement Office that allows us to carry out projects in all countries of Latin America
- Bureau of Foreign Trade, with extensive experience
- Construction Company, for Civil Works and Erection, at this time in Venezuela, we can open the same operation in other countries.

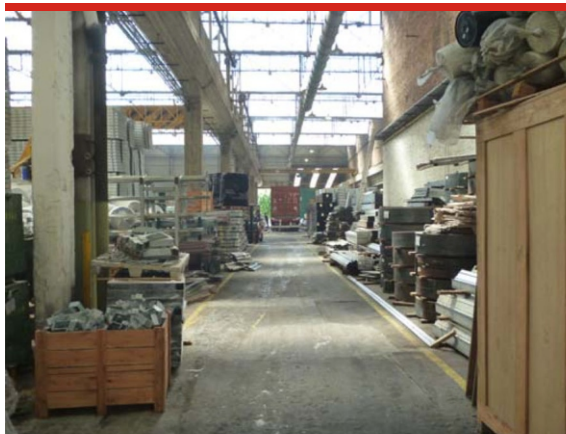
We have provided materials and / or works constructed by more than 5,000,000 m2 in all countries of Latin America, the Caribbean Islands and South East Asia.



Turnkey plants

Our Industrial Plant Bernal

Plant Alem, Bernal - Quilmes, Buenos Aires, Argentina



Storage Plant and Feed Mill, Turen - Portuguesa, Venezuela

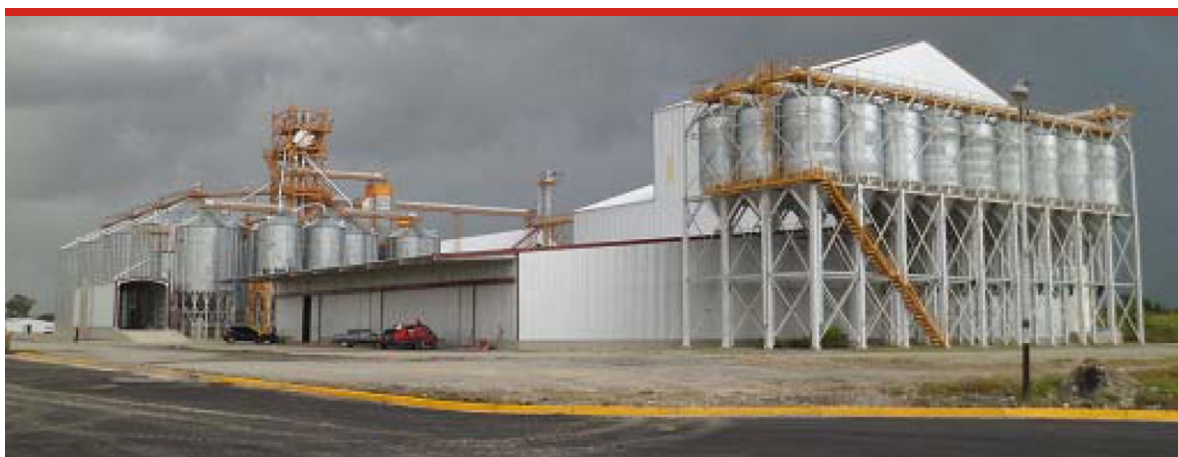
Storage Plant: cereal, 8 Ton silos of 2500 ton each one

Flour cell, of 6000 tons

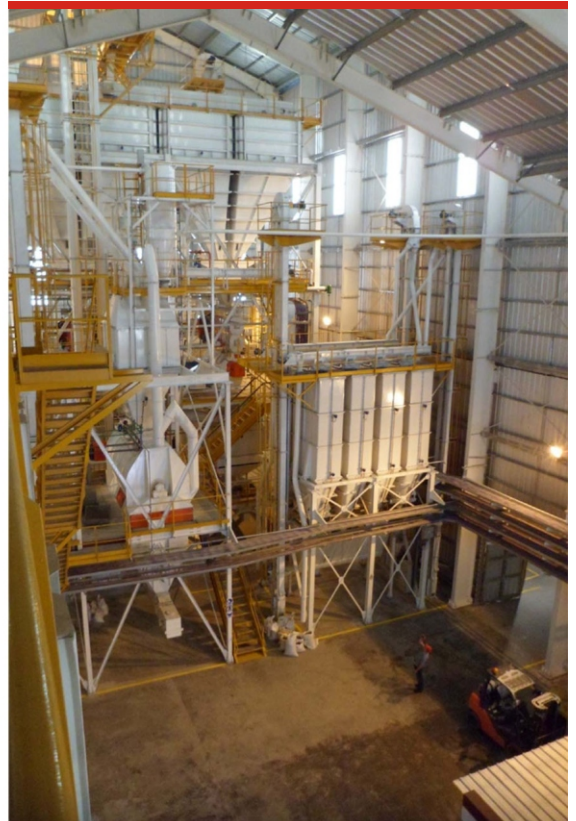
Feed Mill Plant 60 ton / hour

Final Product Silos of 980 ton

Additional Facilities: Balance, school and offices, toilets



Storage Plant and Feed Mill, Turen - Portuguesa, Venezuela



Premises for Latin American Poultry Exhibition, Santa Cruz de la Sierra, Bolivia

This building was designed exclusively to house the exhibition of Latin American Congress of Santa Cruz de la Sierra in 2003. It was built on the grounds of Hotel Los Tajibos were 10,000 m², designed under the concept of building and equipment to recreate poultry house tunnel ventilation. In over 150 exhibitors and was visited in the three-day event for over 4000 people, the highlight and particular to its partial dismantling later, hosted the press room of the Summit of the Americas and its Total disarmament and conditioning for 95% of the materials and structures used were mounted in the same area of Santa Cruz as a poultry farm owned by local firm Sofia Av.



Hatchery, Riojanas Farms, La Rioja, Argentina

The plant covers an area of 2100 m² of building itself of Incubatorio and 120 m² of offices and ancillary facilities such as changing rooms and multiple uses. The plant was designed for its next expansion so the shed is ready and armed to its final dimension and when it is in use 70% of the floor space being closed with panels and giving the possibility of retrofitting space commensurate the requirements. Today the plant has facilities for the production of about 120,000 chicks per week and is expected within two years to double its production, only the new machines should be placed and put the panels.





Sheds, Design and Construction Integrated Farms

Adequacy, preparation and construction of the Farms

The company from inception of design, implementation and feasibility studies on land previously selected by our staff, to build farms under the highest standards of biosecurity and detailed knowledge of the rules and building regulations of the country where you are working.



Our farms in Latin America and the World



Argentina



Argentina



Venezuela



Perú



El Salvador



Rep. Dominicana

Our farms in Latin America and the World



Brasil



Nicaragua



Honduras



Brasil



México

Our farms in Latin America and the World



Some destinations productive of our structures



Reproductoras y abuelas



Pollos de engorde



Postura huevo de consumo en jaulas batería



Cabras lecheras



Cerdos de engorde