



OFFICIAL PROVIDER TO THE UN AND THE RED CROSS



ABOUT US



HOUSE-MATIC is a Spanish company belonging to GRUPO TOBRASA, which is 100% owned by the Torrego family. Its core business is the manufacture and sale of low cost industrial modular housing and structures. Said group has been operating in Spain since 1966 in the traditional construction field and in modular building, residential construction, civil engineering, infrastructure, and textile architecture. We have a team of highly qualified professionals: architects, industrial engineers, consultants, accountants, and translators in six languages, all of whom have extensive experience carrying out international projects.

‘ OUR PURPOSE ’

To provide comprehensive and sustainable solutions to emerging countries in Africa, the Middle East, Central Asia, and Latin America, where there is a real need for prefabricated buildings and infrastructure, thus helping to improve the quality of life for their citizens and the full development of their communities, continually creating local employment.

OUR FACTORY

With over 100,000 m² in its facilities, our factory in Salamanca, Spain, has 220 workers, including technicians and operators, working three eight-hour shifts, 24 hours a day, seven days a week.

The production capacity is 425 modules per month, for an annual output exceeding 4,000,000 m² in polyurethane wall sandwich panels.

Our factory joins together 6 production plants with 2 continuous and four discontinuous lines of panel production, on assembly lines for metal and PVC carpentry, with steel rolling and bending machines, metal shears, hold punchers, plasma cutting, roll-forming machines, welding tables, and painting chamber rooms.



OFFICIAL PROVIDER TO THE UN

HOUSE-MATIC is an official United Nations provider (UNGM number 261831) and is currently registered with 27 of its agencies worldwide.

We currently have Long Term Agreement (LTAs) signed with UNFPA, UNHCR and UNICEF, with the scope to provide and set up prefabricated modules in the 140 countries throughout the world where they have a presence.

At the same time, these LTAs are shared with and used by other agencies, such as UNOPS and UNDP, through "piggybacking."



*Empowered lives.
Resilient nations.*

OFFICIAL PROVIDER TO THE RED CROSS

We are also a provider for the International Federation of the Red Cross and the Red Crescent Societies.



PRODUCTS AND SERVICES

An ideal product for emergency situations in remote locations, refugee resettlement, natural disasters, and armed conflicts. We design and personalize the interior space and its distribution, tailoring our work to each client's needs. Express assembly and easy international shipping.



1. MODULAR CONSTRUCTION

We provide the solution to housing needs of all kinds through our revolutionary system of prefabricated modules which represents the future of greater innovation in the world of construction.



2. TEXTILE ARCHITECTURE

We manufacture all kinds of products related to high-resistance textile architecture for military, civilian, and humanitarian aid uses in emergency situations.



3. INDUSTRIAL TRANSFORMATION OF SHIPPING CONTAINERS

We modify and adapt shipping containers, both old and new, converting them for end uses at hospitals, mobile clinics and kitchens, among other uses.



4. FOOD RATIONS

We offer solutions for combat or field food rationing and serving group catering at remote locations (in military and civilian sectors).

1. PREFABRICATED MODULAR BUILDING WITH SANDWICH PANELS

We are experts at turnkey solutions for anything involving modular construction.



We carry out comprehensive international project management over the following phases:

- › Studying the client's needs and demands.
- › Project design, engineering, and costing.
- › Manufacturing.
- › Logistics and international shipping in containers.
- › Installation and assembly at the final destination, anywhere in the world.
- › Interior finishing of the modules (furniture, beds, appliances, etc.).

Long-standing experience in international projects, as shown by our project portfolio.

THE HOUSE-MATIC BUILDING METHOD

The HOUSE-MATIC system provides the solution to housing needs of all kinds through a revolutionary system of prefabricated modules which represents the future of greater innovation in the world of construction.

Owing to the use of this modular system, we can guarantee our clients express delivery, cost savings on international exporting and shipping, and minimal installation time to complete the housing, with no need for skilled labour to set it up.

Another advantage to this system is that it allows for these types of buildings to be set up at remote locations that are hard to access.

The solidness of the construction, its high thermal and acoustic insulation, and its compliance with the strictest European building and installation codes guarantee this technical solution.

Even though we can tailor the product to the individual needs of each client without any problem, manufacturing it according to the client's specifications, our modules have various standard measurements. Some of these are:



	Length (mm)	Width (mm)	Height (mm)
Mod. HM23	2300	2350	2570
Mod. HM38	3840	2350	2570
Mod. HM58	5840	2350	2570
Mod. HM60	6000	2350	2570
Mod. HM78	7840	2350	2570



 [DOWNLOAD BLUEPRINTS >](#)

Beyond these standard modules, multiple combinations can be created by joining and fitting them together horizontally and vertically (up to 4 storeys).
This system is completely modular and it ends up being easy to operate with a truck crane with lifting arm.

COMPETITIVE ADVANTAGE

LOW COST

- › High-quality materials at very affordable prices owing to their industrial manufacture.
- › Some of the most competitive logistics costs on the market.
- › Maximum ease of international shipping and storage. Volume and load are optimised with the 40' High Cube container.

QUALITY

- › Walls and roof are well insulated thermally and acoustically. Completely waterproof modules.
- › Pre-installed electrical wiring.
- › Hidden electrical wiring.
- › Power outlets and electrical switches come pre-installed (tailored to each country) with an outside junction box.
- › Potential for installing a kitchen and bathroom.
- › Insulation that is superior to what conventional materials provide. Independent laboratories have done thermal and acoustic testing on our modules and have shown them to be at a higher level than conventional housing.

DURABLE SYSTEM

- › Reinforced steel structure.
- › Exterior galvanized steel sheets and highly insulated materials.
- › Weather-resistant materials and exterior finishes. Practically maintenance-free.

SAFETY

- › Meets safety codes for earthquake safety and wind loads. ISO 9001 compliant, with quality control independently certified by SGS.
- › Potential to vary the interior height of the module and the roof's angle of orientation to tailor the construction to different climates (rain, snow loads, etc.).

ENVIRONMENTAL COMMITMENT

- › Environmentally sensitive and recyclable materials.
- › Housing designed to meet environmental codes.
- › Potential to build completely off the grid, using renewable energy sources.

SHIPPABLE AND REINSTALLABLE

- › The modularity of our building products greatly facilitates their shipment, and thus their exportation from our factory in Spain.
- › Potential to dismantle and relocate the building once the purpose for which it was built has been met.
- › Ease of storage is yet another outstanding feature for these kinds of building products.

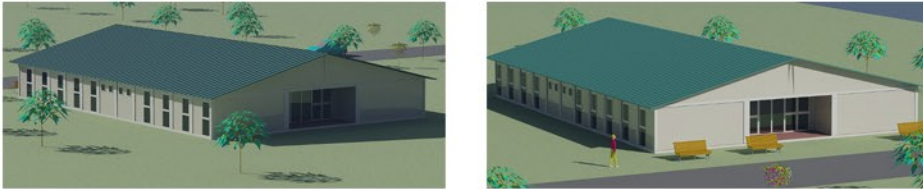
QUICK ASSEMBLY AND INSTALLATION

- › Extremely quick construction.
- › No skilled labour required.

WARRANTY

- › As the manufacturers we are, we guarantee our products for a 5-year period.

EXAMPLE OF MODULARITY



 [DOWNLOAD SAMPLE BLUEPRINTS >](#)

ALTERNATIVE USES

Prefabricated modular structures for use as:

- › Housing
- › Classrooms / Schools
- › Offices
- › Camps / Base Camps
- › Hospitals and medical centres
- › Laboratories
- › Common canteens
- › Dressing rooms, bathrooms, and eco-friendly showers

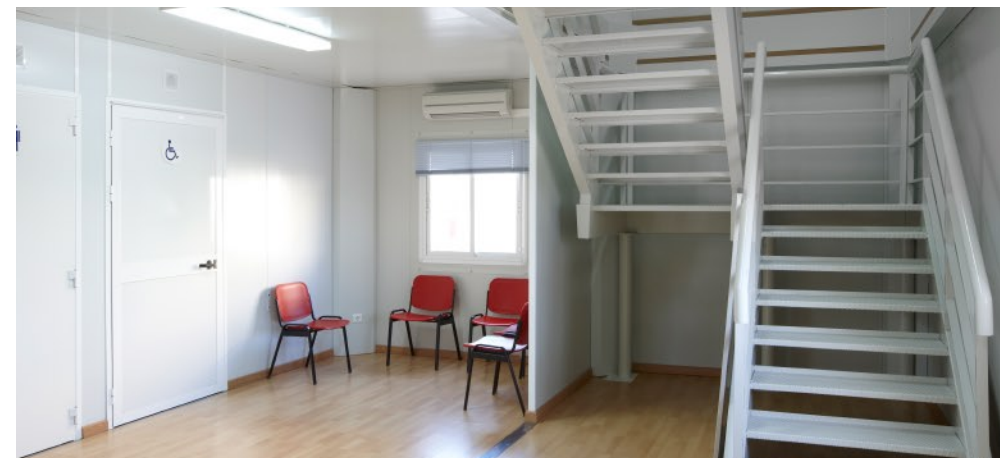
Prefabricated structures for use in production facilities such as:

- › Farming and annex facilities
- › Food-handling areas
- › Commercial facilities
- › Worker housing
- › Industrial warehouses

TECHNICAL SPECIFICATIONS

Our standard technical specifications would be as follows, though there is flexibility as to the features and materials.

 [DOWNLOAD TECHNICAL SPECIFICATIONS >](#)



2. TEXTILE ARCHITECTURE FOR RAPID DEPLOYMENT

We manufacture all kinds of products related to high-resistance textile architecture for military, civilian, and humanitarian aid uses in emergency situations:

- › Hangars and CBRN defence.
- › Inflatable multi-use shelters.
- › Tents made to order (any size and quality).
- › Large-size canopies.
- › Camouflage netting.
- › PVC manufacturing using high-frequency welding.
- › All types of accessories for camps and field logistics.

Everything tailored to the needs, standards, quality, and measurements indicated by our client.

We have the most cutting-edge technology in the sector and we strictly adhere to European quality control standards: ISO 9001:2008 Quality, ISO 14001:2004 Environment, PECAL (AQAP) 2120 NATO.

House-Matic textile products optimise your international logistics costs, as they are light, easy to use, and can be shipped quickly, either in shipping containers or by air freight.

The textile shelters that we design and manufacture are tailored to the most remote and inhospitable environments on the planet, with maximum functionality and durability throughout their entire life cycle.

Rapid deployment and easy set-up. No skilled labour required.

We also fulfil personalized turnkey projects, making entire camps with life-sustaining facilities, hospitals, mobile clinics, canteens, kitchens, workshops, schools, hangars, and control centres, all tailored to the cultural traditions and customs of each nation.

For clients who need it, we also offer optional electricity-generation kit (solar kit or generators), water tanks, waste removal systems, etc.



3. INDUSTRIAL TRANSFORMATION OF MARITIME SHIPPING CONTAINERS

Any type of shipping container conversion can be done at our plant, no matter how unusual or complicated it may be.

We modify and adapt shipping containers, both old and new, converting them for end uses such as:



- › Hospitals
- › Mobile clinics
- › Kitchens
- › Field canteens
- › Dressing rooms and bathrooms
- › Classrooms
- › Offices
- › Ammunition warehouses
- › Etc.

If as a result of its conversion, the container loses its certificate and its CSC 1972 plate, we adapt to that new situation, taking it upon ourselves to file the export paperwork.



4. COMBAT OR FIELD FOOD RATIONS

GROUP CATERING SERVICES AT REMOTE LOCATIONS

Based on our *core-business* (prefabricated modular construction), our clients require that we provide a culinary solution as a complement to the construction of camps or base stations where a large number of people live together with basic daily needs for food.

That's why we offer a global solution and a comprehensive service to the various NGOs and companies that we work with anywhere in the world.

House-Matic acts as a distributor and merchandiser for leading Spanish manufacturers in the sector of food handling and preparation.

We are aware of how important the selling of individual and group food rations is, and of the liability involved. That's why we offer only high-quality products that have passed through the strictest health controls.

Field rations with long-term expiration dates are kept at room temperature.

Nutritionists and dieticians rigorously control our entire product line, allowing us to offer products that meet quality standards such as **ISO 9001:2008**

We adapt to the needs of each client and each country, preparing individualized diets according to their cultural norms, religious beliefs pertaining to food (Halal), race, customs, lifestyle, climate, etc.



INTERNATIONAL SHIPPING AND LOGISTICS

WE SHIP AND DELIVER OUR PRODUCTS *DAP* TO ANY PART OF THE WORLD,
NO MATTER HOW REMOTE OR COMPLICATED THE FINAL DESTINATION MAY BE

We are experts at foreign trade, whether by air, land, or sea.

In the event of an emergency and when protocols require it, we act with maximum speed and efficiency to deliver the merchandise to our end client in extremely tight turnaround times.

We load the shipping containers at our factory in Spain, making optimum use of their volume, and we manage all of the shipping paperwork for their export to the final destination in accordance with agreed Incoterms rules (to any country in the world).



‘ WE WORK ONLY WITH THE BEST SHIPPERS ’

We work only with the most internationally recognised and experienced freight forwarders, shipping companies, and customs agents.

All delicate materials in the shipment (toiletries, furniture, kit and accessories) will be shipped on pallets with the boxes sealed in plastic wrapping at their place of origination, ensuring complete protection against accidental damage and breakage.

PROJECTS

Here is a selection of the most noteworthy projects we have done in recent years:



Syrian refugee resettlement camp
(Berlin, Germany)



Four-storey 100% modular building
(University of Barranquilla, Colombia)



Office building, Bordeaux (France)



Nepal Camp



Children's summer camp in Galicia, Spain



Office building interior (Arequipa, Peru)



Potable water supply, Greece



Interior of an emergency field tent, Iraq



Yurts in the Gobi Desert (Mongolia)



Combat food ration, Spanish Army



Food handling at our manufacturing
facilities (Spain)



Office containers, La Paz Hospital (Madrid,
Spain)

TOGETHER BUILDING A GREAT AFRICA



The first determining factor for liberty is having a place to live.

At House-Matic, we are on the side of liberty, and we fight for the dignity of all people. Africa yearns for both of these conditions, which should be inherent in the life of every human being, to be met.

We believe in the enormous potential of this great continent and in the worth of its peoples. That is why our commitment to them is entirely aimed at helping them to develop efficiently by building inhabitable spaces in which they can develop their full capacities.

We are Africa experts. We marvel at their lands and their peoples. And we are conscious of the important development work that we can do from House-Matic. This is undoubtedly an arduous task that is not without hardship. But it is challenges that motivate us.

Africa, with its 1.2 billion inhabitants spread among 54 nations, is a challenge for us; one that we can face thanks to the greatness of our dream, effort, drive, and long-standing international experience.

Underlying our work is a clear ethical principle; a belief in the rights and togetherness of all humans and a belief about taking on the huge responsibility of social development among peoples.

One Family, One Decent Home.

Only through unity, working shoulder to shoulder, we will be able to realise what our slogan states: "Together Building a Great Africa" and a more just society.

PROJECTS IN AFRICA



CONTACT US

HOUSE-MATIC's HEADQUARTERS

C/ Berna 4
28224 Pozuelo de Alarcón, Madrid
Spain

 [VIEW MAP >](#)

TELEPHONE

+ 34 91 005 92 67

EMAIL

house-matic@house-matic.com

WEB

www.house-matic.com





**"BROTHERHOOD BASED ON EQUALITY
IS THE SUPREME GOAL TO BE ATTAINED BY HUMAN SOCIETY"**

Ramana Maharshi

www.house-matic.com