

Leading brand in professional height safety

---



TEL : 021-67356658

Email : [Sales@fclimb.com](mailto:Sales@fclimb.com)

Website : [www.fclimb.com](http://www.fclimb.com)

The image features a close-up of a metal safety component, likely a carabiner or connector, attached to a steel cable. The component is cylindrical with a hexagonal section in the middle. The word "Fclimb" is engraved on the hexagonal part. The background is a blurred industrial setting with overhead lights.

**Fclimb**  
FCLIMB SAFETY

**For climbing, No falling**

**有福攀，无坠落！**

Fclimb

福攀安防科技(上海)有限



Fclimb Safety Technology (Shanghai) Co., Ltd. is located at No. 125 Fengzhan Road, Fengjing Town, Jinshan District, Shanghai, P.R.China. The company has passed ISO9001, ISO14001, ISO45001 and other certifications, and is a leading brand manufacturer of height safety fall prevention devices in the industry.

The company adheres to technology priority, independent research and development, and innovation driven, focusing on technology development and product production in the field of height safety, to safeguard workers' work at heights!

The product is widely used in various industries such as communication towers, power towers, hydropower stations, wind towers, logistics transportation, construction, equipment maintenance, factory crane maintenance, etc. It is the last line of defense for height workers to arrest falls!

## Height Safety Solutions

1、 Company Introduction .....	1-5
2、 JMIND® vertical lifeline .....	6-11
3、 Cablestop® SL horizontal lifeline .....	12-15
4、 Cablestop® DL-h horizontal lifeline .....	16-19
5、 Cablestop® DL-s horizontal lifeline .....	20-21
6、 FCLIMB® Anchor point .....	22-23
7、 FCLIMB® Full body harness .....	24-29

## contents

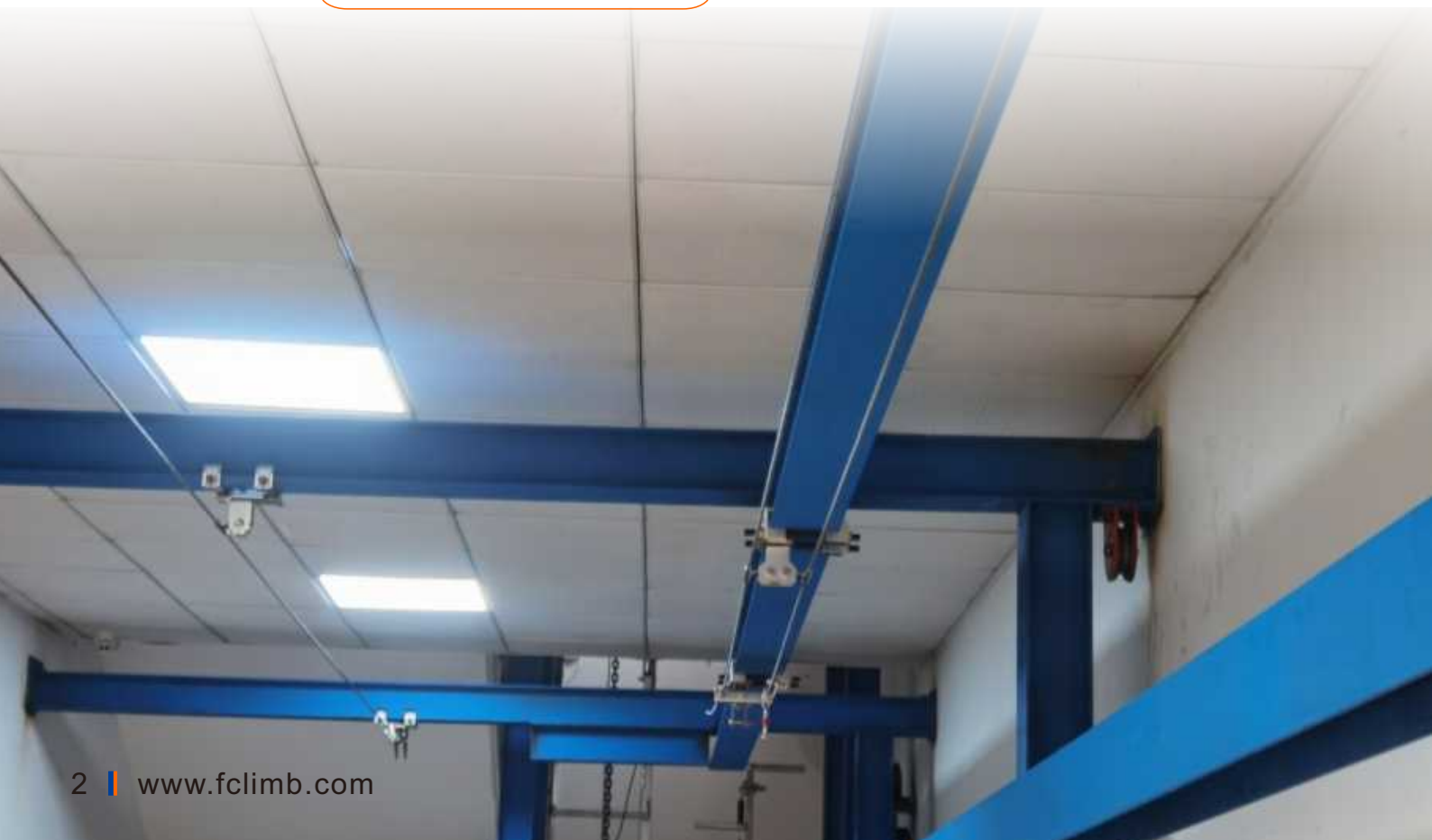
# Fclimb

## Fclimb safety

In order to better evaluate the actual application performance of products after installation, the sample display center of Fclimb Safety Technology provides a variety of simulated installation environments, which can be displayed for different product installation applications and tested to evaluate their performance.

Simulated installation can identify the shortcomings of the product before actual installation and make improvements, providing effective guarantees for the implementation of customized height safety solutions for customers.

### Sample Display Center



# Fclimb

## Fclimb safety

Fclimb has its own fall testing laboratory with elevation testing brackets and related testing equipment, which can perform dynamic impact testing and static tensile testing on various products. All products must undergo multiple repeated tests according to standards before leaving the factory to verify their safety performance.

Fclimb Safety Technology collaborates with the leading international security testing agency - DEKRA (CE0158) in Germany. The products have passed DEKRA's laboratory testing in Germany and meet the European CE certification.

Strict testing is only aimed at providing customers with safer and more reliable products!



Fall Testing Laboratory



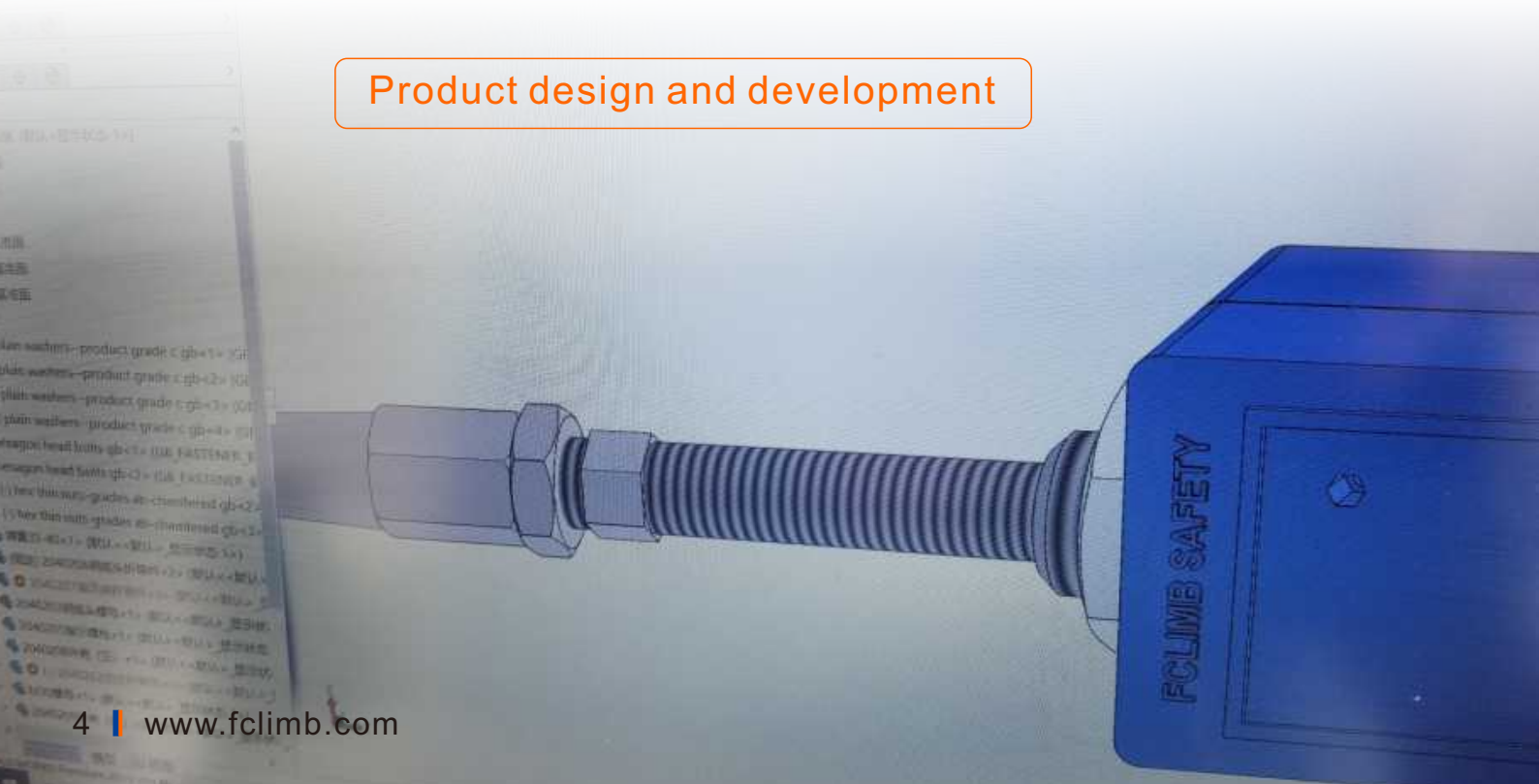


Fclimb Safety Technology focuses on the development and application of technology in the field of height safety, with a professional design and development team. We adhere to independent research and development, innovation driven, and constantly introduce new products to ensure continuous optimization and better meet customer needs.

Faced with the diverse needs of customers, Fclimb Safety Technology Development Team can customize personalized design based on their actual needs, and provide specialized height safety technology solutions for different projects to better adapt to customer environmental needs.

Adhering to technological innovation as the primary driving force for enterprise development, Fclimb will continue to launch products that are more high-quality, safer, and meet customer on-site needs.

Product design and development



# Fclimb

## Fclimb safety

Fclimb provides comprehensive integrated services for customers in different height work environments, including on-site survey, scheme design, installation and construction, safety training, annual inspection, maintenance, etc. We customize professional high-altitude safety and fall prevention system solutions to meet various environmental needs.

On-site survey

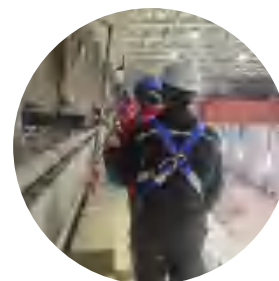
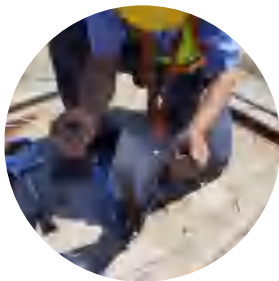
Customized solutions


Installation construction

Safety training

Annual inspection

Maintenance





劲肋® 垂直生命线

JMIND® vertical lifeline

by **Fclimb**

## JMIND® Vertical lifeline

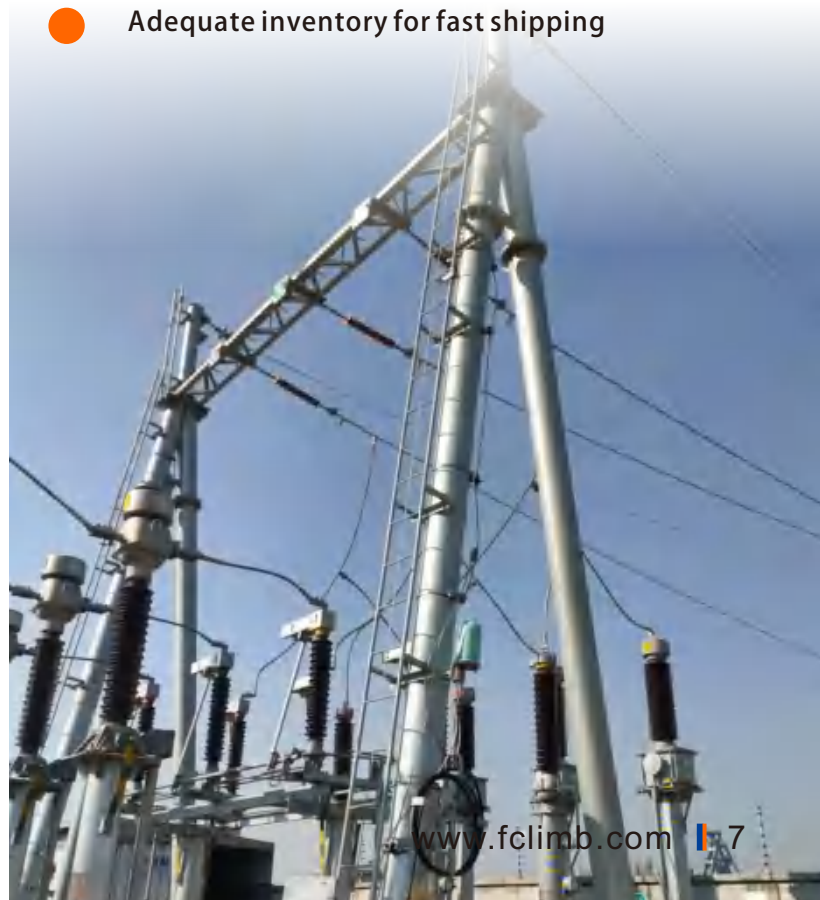
The JMIND® vertical lifeline system independently developed by Fclimb Safety Technology is divided into various installation forms such as JV, JVL, JVD, and JW, which can adapt to different types of ladder installation and use.

The JMIND® vertical lifeline has been tested by the DEKRA German laboratory and meets the EN353-1 safety standard. It is a safe and effective fall prevention device for vertical climbing.

The product is widely used in various application environments in communication towers, power towers, wind towers, stacking equipment, oil transfer arms, construction, and industrial fields.

### Product Features:

- Suitable for various types of ladders
- 6KN top shock absorber
- Unlimited installation length
- Multiple bolts for secure and reliable fixation
- Bolt without front extension, without hanging pants legs
- Adequate inventory for fast shipping



The vertical ladder fall arrest system is installed on the vertical ladder through fixtures, without the need for drilling and welding, and can be reused. Applied in industries such as wind towers, power towers, communication towers, photovoltaics, as well as climbing stairs to reach roofs and equipment tops in factories. When climbing personnel move along the vertical lifeline, continuous and uninterrupted protection can be provided to prevent personnel from falling.



Applicable: Standard ladder



Upper fixed bracket **JV01001**

**Stainless steel** 35KN

Used for fixing the upper end of the vertical lifeline with bolts, suitable for step spacing of 222mm-378mm



Cable guide **JV03003**

**Stainless steel** 15KN

Guide the steel cable towards the designed direction and install one every 10 meters to prevent the cable from swinging.



Fall arrester

**316 Stainless steel+galvanized hook** **JV08001**

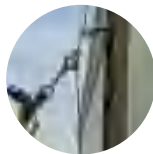
**All stainless steel, corrosion resistance** **JV08001S**

The steel cable self-locking device can slide freely along the steel wire rope, and the equipment has an anti inversion function to avoid misoperation.



**Double aluminum rings** **Dual safeguard**

The top of the steel wire rope is pressed with double aluminum rings, providing dual safety protection



**Fixed steel wire rope** **Prevent swinging**

The steel cable self-locking device is passable without the need for unhooking. All stainless steel, no aging risk.



Energy shock absorber **JV02002**

**Stainless steel+polyurethane** 15KN

Shock absorbers are used to absorb the impact force generated in the event of a fall, protecting user safety, and are installed on top of the lifeline system.



Lower fixing bracket and tension device **JV04001**

**Stainless steel** 15KN

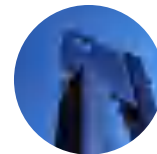
Used to fix the lower end of the lifeline system, with a tensioning device to maintain a certain tension and elasticity of the steel cable.



Sign plate **FLPJ09001**

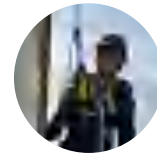
**Aluminium** **Safety warning**

Installed at the entrance of the lifeline, displaying warnings and operational information



**Spare hanging point** **Easy to change hooks**

Spare hanging points on the upper end of the bracket for easy hook replacement and temporary anchoring



**When a fall occurs** **Effective braking**

Meet the requirement of 100 kilograms of human fall prevention



EN 353-1:2014  
+A1:2017

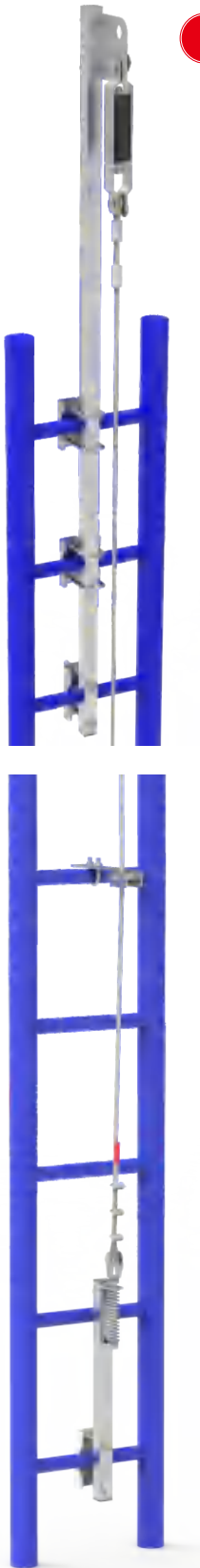


Standard certification

## JMIND® JVL

The JVL vertical lifeline system is installed on a straight ladder through fixtures, without the need for drilling and welding, and is extended above for installation. Applied in industries such as wind towers, power towers, communication towers, and photovoltaics, as well as ladders reaching the roofs of factories and equipment tops.

When climbing personnel move along the vertical lifeline, continuous and uninterrupted protection can be provided to prevent personnel from falling.



**Applicable: Standard ladder upper end extension installation, easy to climb or evacuate from the upper platform.**



Ladder Extension Bracket **JV01002**

**Stainless steel 15KN**

Used for fixing the upper end of the vertical lifeline with bolts, so that the anchor point is higher than the ladder, making it easy to climb onto the upper platform.



Energy shock absorber **JV02002**

**Stainless steel+polyurethane 15KN**

Shock absorbers are used to absorb the impact force generated in the event of a fall, protecting user safety, and are installed on top of the lifeline system.



Cable guide **JV03003**

**Stainless steel 15KN**

Guide the steel cable towards the designed direction and install one every 10 meters to prevent the cable from swinging.



Lower fixing bracket and tension device **JV04001**

**Stainless steel 15KN**

Used to fix the lower end of the lifeline system, with a tensioning device to maintain a certain tension and elasticity of the steel cable.



Fall arrester

**316 Stainless steel+galvanized hook JV08001**

**All stainless steel, corrosion resistance JV08001S**

The steel cable self-locking device can slide freely along the steel wire rope, and the equipment has an anti inversion function to avoid misoperation.



Sign plate **FLPJ09001**

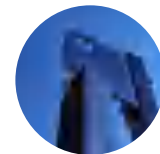
**Aluminium Safety warning**

Installed at the entrance of the lifeline, displaying warnings and operational information



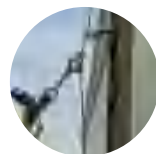
**Double aluminum rings Dual safeguard**

The top of the steel wire rope is pressed with double aluminum rings, providing dual safety protection



**Spare hanging point Easy to change hooks**

Spare hanging points on the upper end of the bracket for easy hook replacement and temporary anchoring



**Fixed steel wire rope Prevent swinging**

The steel cable self-locking device is passable without the need for unhooking. All stainless steel, no aging risk.



**When a fall occurs Effective braking**

Meet the requirement of 100 kilograms of human fall prevention



EN 353-1:2014  
+A1:2017



Standard certification

The JVD vertical lifeline is installed on the upright pole of a foot nail ladder or a straight climbing ladder through fixtures, without the need for drilling and welding, and can be reused. Made of all stainless steel material, the fixture has a wide range of applications and is widely used in industries such as wind towers, power towers, communication towers, and construction. When climbing personnel move along the vertical lifeline, continuous and uninterrupted protection can be provided to prevent personnel from falling.



Applicable: Fishbone foot nail ladder, standard ladder pole



Upper fixing bracket **JV01003**

Stainless steel 35KN

Used for fixing the upper end of the vertical lifeline with bolts, and can be fixed on ladder poles or beams.



Energy shock absorber **JV02002**

Stainless steel+polyurethane 15KN

Shock absorbers are used to absorb the impact force generated in the event of a fall, protecting user safety, and are installed on top of the lifeline system.



Cable guide **JV03002**

Stainless steel 15KN

Guide the steel cable towards the designed direction and install one every 10 meters to prevent the cable from swinging.



Lower fixing bracket and tension device **JV04003**

Stainless steel 15KN

Used to fix the lower end of the lifeline system, with a tensioning device to maintain a certain tension and elasticity of the steel cable.

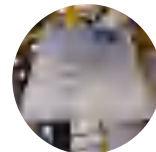


Fall arrester

316 Stainless steel+galvanized hook **JV08001**

All stainless steel, corrosion resistance **JV08001S**

The steel cable self-locking device can slide freely along the steel wire rope, and the equipment has an anti inversion function to avoid misoperation.



Sign plate **FLPJ09001**

Aluminium Safety warning

Installed at the entrance of the lifeline, displaying warnings and operational information



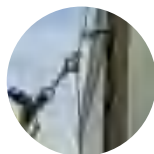
Double aluminum rings Dual safeguard

The top of the steel wire rope is pressed with double aluminum rings, providing dual safety protection



When a fall occurs Effective braking

Meet the requirement of 100 kilograms of human fall prevention



Fixed steel wire rope Prevent swinging

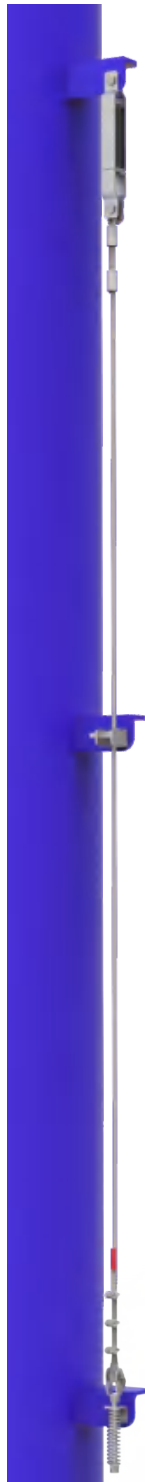
The steel cable self-locking device is passable without the need for unhooking. All stainless steel, no aging risk.

The fall arrest system of single pipe tower is fixed to the existing anchor points of the steel structure through bolts and can be reused.

All stainless steel material, suitable for various anchoring points, with a wide range of applications, widely used in industries such as wind towers, power towers, communication towers, and equipment installation. When climbing personnel move along the vertical lifeline, continuous and uninterrupted protection can be provided to prevent personnel from falling.



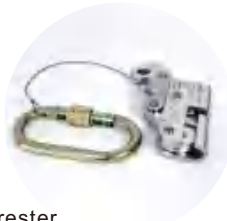
Applicable: Welding brackets, single pipe towers, climbing oil delivery arms, roller coaster lifting sections, etc



Energy shock absorber **JV02002**

**Stainless steel+polyurethane 15KN**

Shock absorbers are used to absorb the impact force generated in the event of a fall, protecting user safety, and are installed on top of the lifeline system.



Fall arrester

**316 Stainless steel+galvanized hook JV08001**

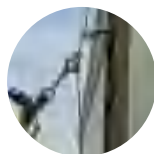
**All stainless steel, corrosion resistance JV08001S**

The steel cable self-locking device can slide freely along the steel wire rope, and the equipment has an anti inversion function to avoid misoperation.



**Double aluminum rings Dual safeguard**

The top of the steel wire rope is pressed with double aluminum rings, providing dual safety protection



**Fixed steel wire rope Prevent swinging**

The steel cable self-locking device is passable without the need for unhooking. All stainless steel, no aging risk.



Cable guide **JV03001**

**Stainless steel 15KN**

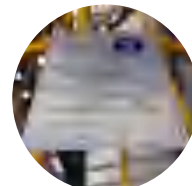
Guide the steel cable towards the designed direction and install one every 10 meters to prevent the cable from swinging.



Lower fixing bracket and tension device **JV04002**

**Stainless steel 15KN**

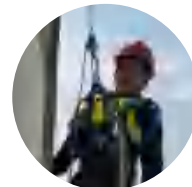
Used to fix the lower end of the lifeline system, with a tensioning device to maintain a certain tension and elasticity of the steel cable.



Sign plate **FLPJ09001**

**Aluminium Safety warning**

Installed at the entrance of the lifeline, displaying warnings and operational information



**When a fall occurs Effective braking**

Meet the requirement of 100 kilograms of human fall prevention



Standard certification



铠索® SL水平生命线

CABLESTOP® SL

horizontal lifeline

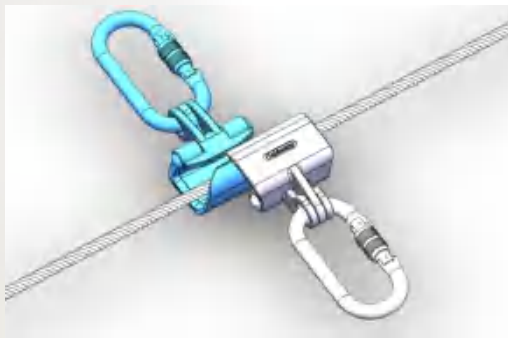
by **Fclimb**

The CABLESTOP<sup>®</sup> horizontal lifeline system independently developed by Fclimb safety Technology is divided into SL single steel cable and DL double steel cable installation forms, which can adapt to different types of horizontal mobile environments.

The product is widely used in various application environments such as hydropower stations, construction, maintenance of train tracks, equipment maintenance, loading and unloading dock awnings, and industrial roofs.

## Cablestop<sup>®</sup> horizontal lifeline

### Horizontal lifeline for achieving cross traffic before and after



When two people on the lifeline meet, they can quickly cross without disconnecting either side, minimizing the risk of falling. Within the entire range of the lifeline, there is no need to unhook it for full passage.

**Patent number: ZL 201821026896.0**



Scan the code to check the traffic effect or visit our company's website  
[www.fclimb.com](http://www.fclimb.com)

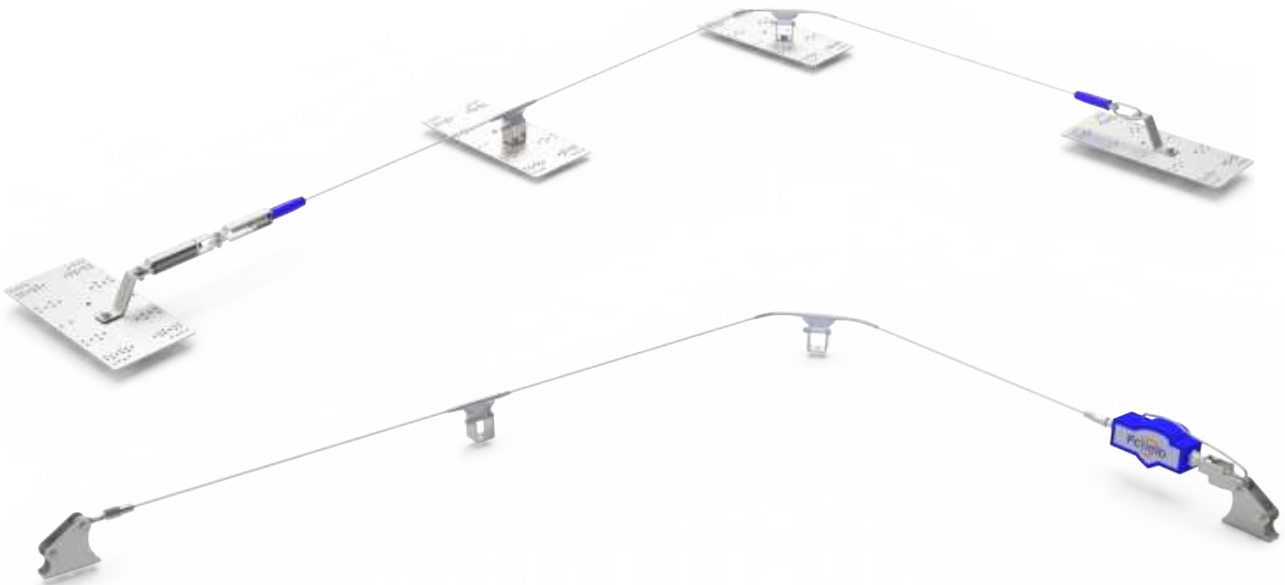
CABLESTOP® SL single cable horizontal lifeline, using a single wire rope as the carrier, combined with a dedicated shock absorption tensiing device, the maximum spacing between columns can reach 15 meters, allowing multiple operators to cross back and forth. It is currently an ideal choice for installation in environments such as roofs, platforms, and columns.

- Cross traffic before and after
- Up to 4 people can use it
- Connect anywhere
- No need to unhook throughout the entire process
- Accessory traceability code
- 316 stainless steel

### Multiple installation methods can be selected according to different installation environments

- Personalized customization
- Special configuration plan
- Professional construction team

For more information, please call FCLIMB Company or authorized distributors.

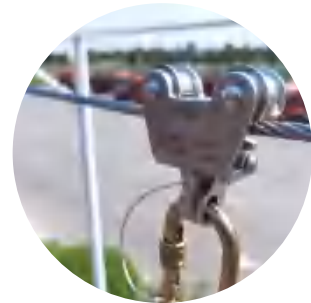
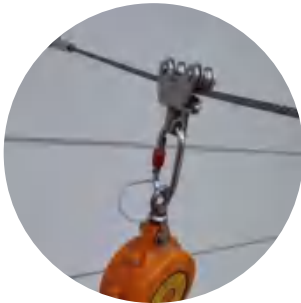


No special tools required for quick installation, easy disassembly, and easy replacement of accessories.

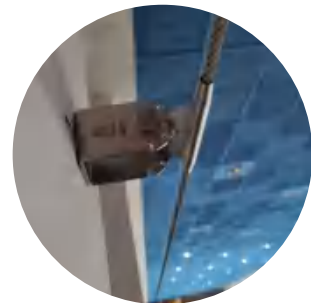
Cross traffic between front and rear personnel  
High altitude encounters  
no longer "sacrifice one's life to decouple"

### Cablestop® SL Installation examples

#### Overhead installation



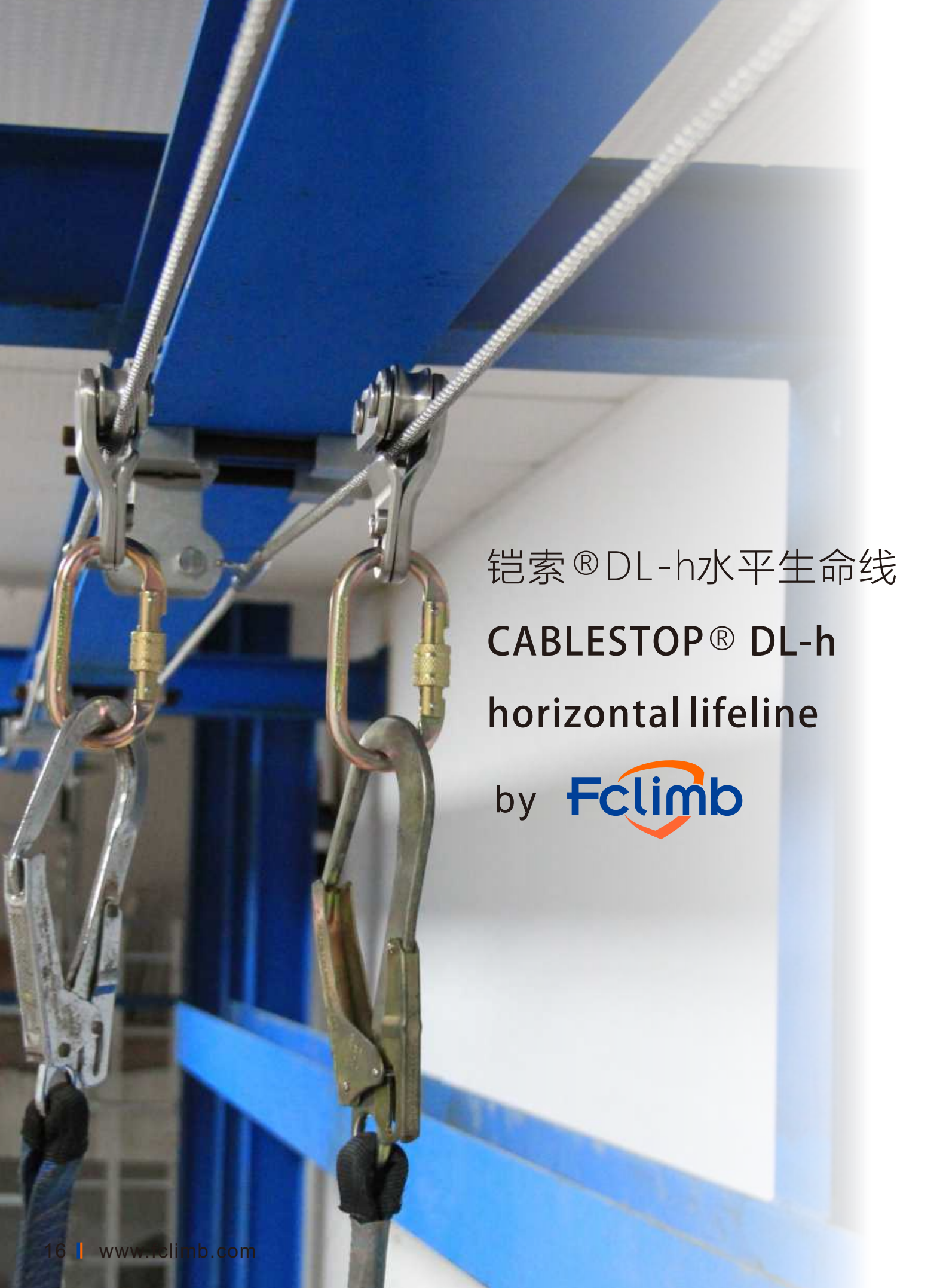
#### Wall mounted



#### Installation above the rooftop



The safety lifeline is the last line of defense to ensure the safety of personnel in the event of a fall, Please be sure to contact FCLIMB company or authorized distributors in advance to provide a special technical solution!



铠索® DL-h水平生命线

CABLESTOP® DL-h  
horizontal lifeline

by **Fclimb**

The CABLESTOP® DL horizontal lifeline system independently developed by FCLIMB Safety Technology is divided into two installation forms: DL-h overhead double cable lifeline and DL-s double cable, which can be installed and used in different types of high-altitude environments.

## Cablestop® DL-h Overhead Lifeline

### Horizontal lifeline of overhead crossing



When people on both sides of the lifeline meet, they can quickly cross without disconnecting any connections, making it particularly suitable for environments such as multiple people carrying goods above trucks, increasing the convenience of height operations and reducing the risk of falling. Within the entire range of the lifeline, users can pass through the entire journey without uncoupling.

**Patent number: ZL 201921703722.8**

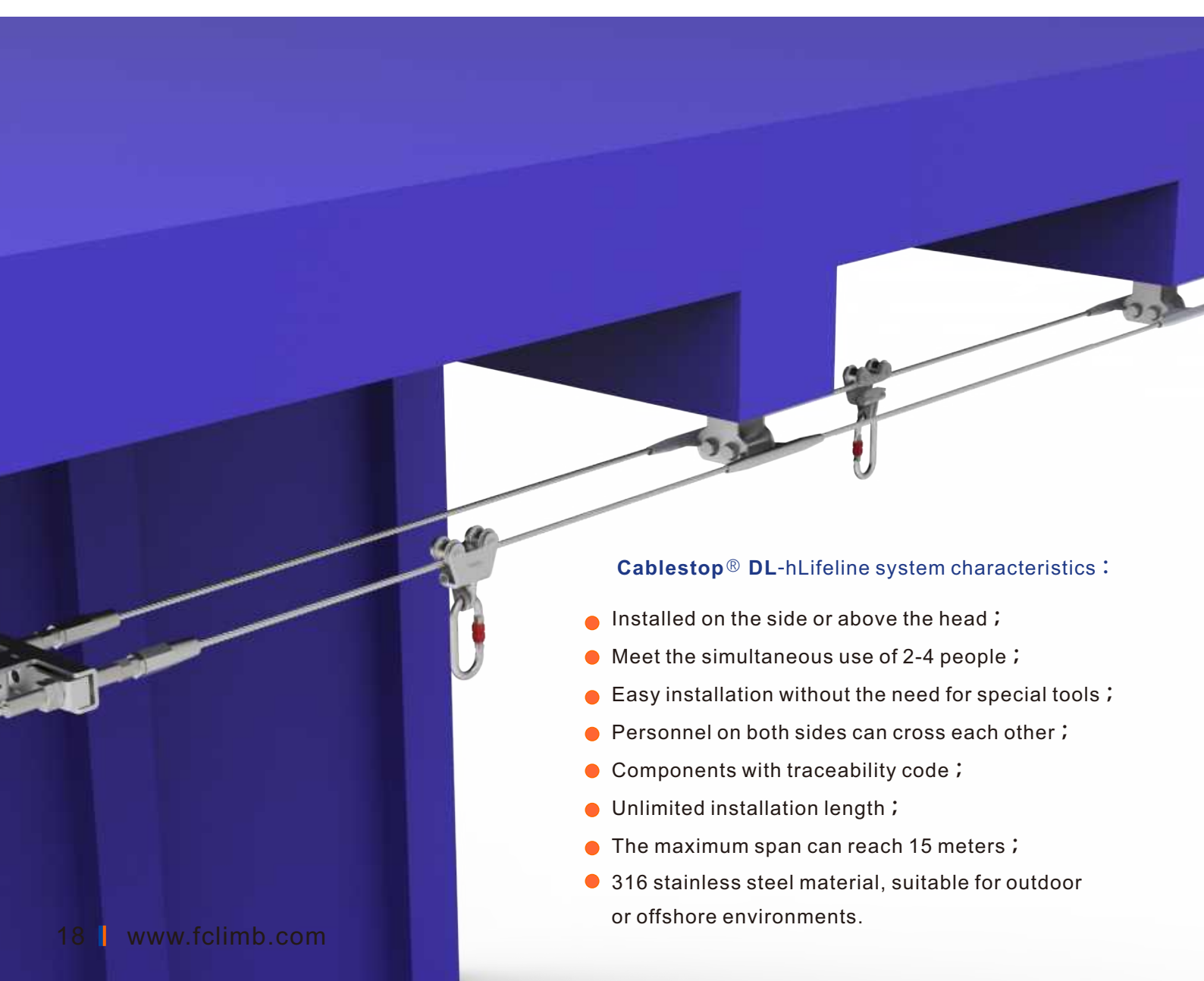


Scan the code to check the traffic effect or visit our company's website [www.fclimb.com](http://www.fclimb.com)

The Cablestop® DL-h lifeline is the optimal solution for 2-4 users working on the top of trucks or equipment to prevent falling.

The Cablestop® DL-h lifeline is equipped with DL-h tensioning shock absorbers at the end, which can be quickly installed without the need for special tools.

Users on both sides of the lifeline can cross each other, ensuring safety while improving traffic efficiency.



### Cablestop® DL-hLifeline system characteristics :

- Installed on the side or above the head ;
- Meet the simultaneous use of 2-4 people ;
- Easy installation without the need for special tools ;
- Personnel on both sides can cross each other ;
- Components with traceability code ;
- Unlimited installation length ;
- The maximum span can reach 15 meters ;
- 316 stainless steel material, suitable for outdoor or offshore environments.

## Cablestop® DL-h

Cablestop® DL - h double cable horizontal lifeline, using two cables as carriers and DL-h tensioning shock absorbers, with a maximum spacing of 18 meters between anchor points, can achieve cross passage of workers on both sides of the lifeline, especially suitable for multiple people working on the top of trucks and equipment.

- Cross traffic between personnel on both sides
- No need to unhook throughout the entire process
- Accessories have traceability codes
- Connect anywhere
- Up to 4 people can use it
- Provide anti fall system solutions



End anchor 020101

stainless steel 45KN

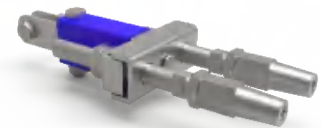
Used for fixing lifeline terminals, with optional hanging point height, Provide a temporary anchor point, Convenient lifeline maintenance and component replacement.



DL-h Intermediate anchor 020202

stainless steel 35KN

Used as a fixed support in the path of the lifeline, the slider can freely pass through.



DL-h tensioning shock absorber 020403

stainless steel 25KN

Installed at the end of the lifeline system, integrated with shock absorbers and tensioners, with a simple structure that can be quickly installed without any special tools.



DL Overhead slider

15KN

316 Stainless steel+galvanized hook 020802

All stainless steel, corrosion resistance 020802S

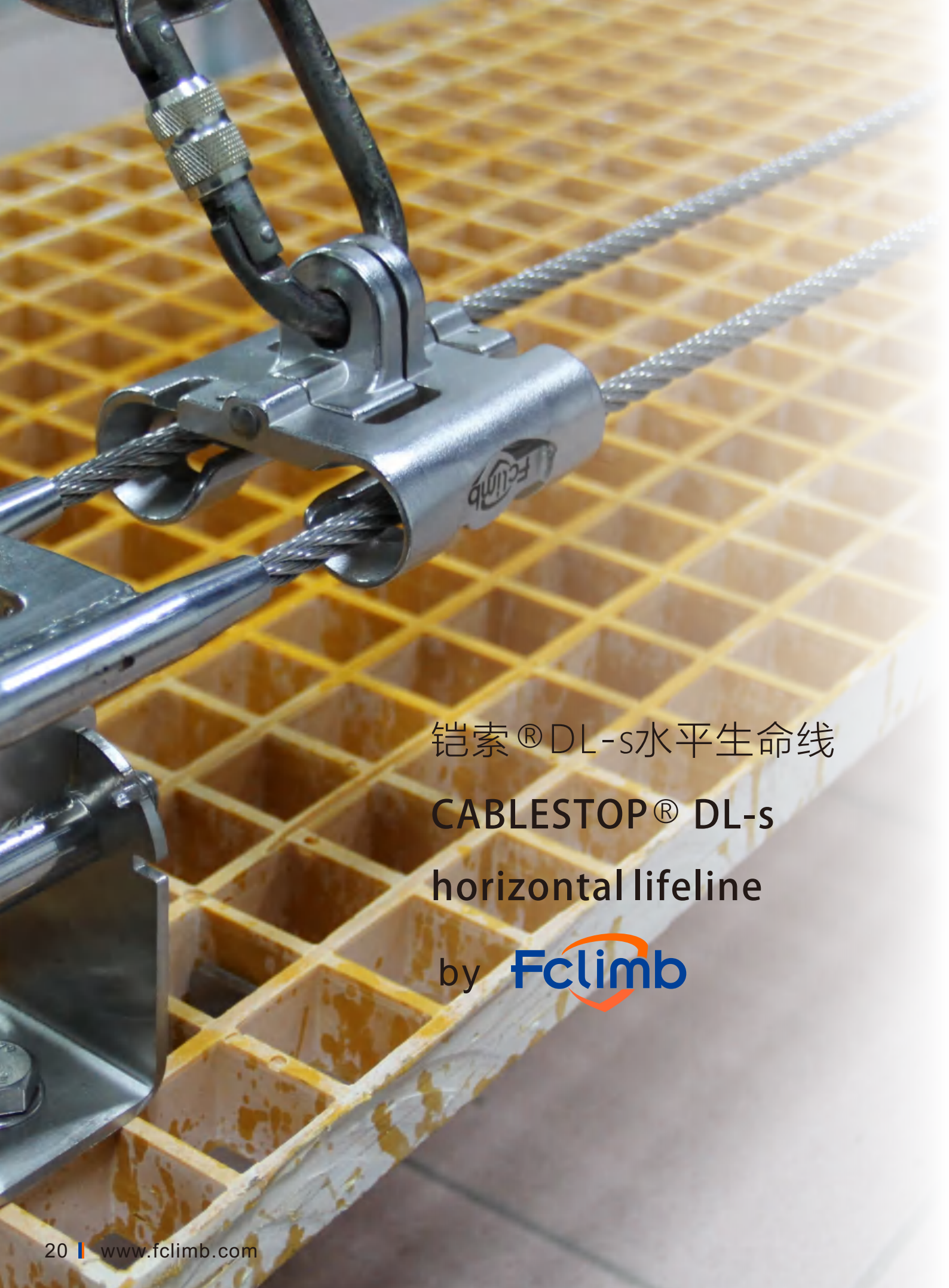
Used for personal fall prevention, the slider can be connected or detached at any position on the lifeline, and can freely pass within the coverage range of the lifeline without unhooking.

No special tools required for quick installation, easy disassembly, and easy replacement of accessories.

Cross traffic between personnel on both sides, no longer "entangled" in their respective paths.



The safety lifeline is the last line of defense to ensure the safety of personnel in the event of a fall, Please be sure to contact FCLIMB company or authorized distributors in advance to provide a special technical solution!



铠索® DL-s水平生命线

**CABLESTOP® DL-s**

**horizontal lifeline**

by **Fclimb**

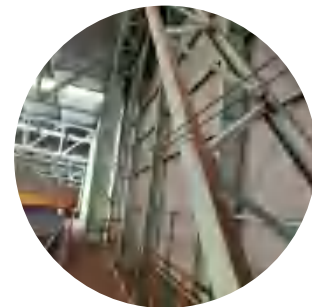
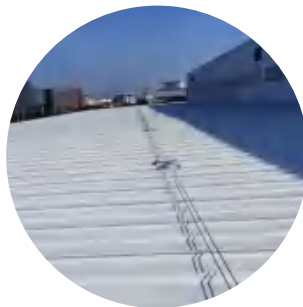
## Cablestop® DL-s Double cable lifeline

The Cablestop® DL-s horizontal lifeline system independently developed by Fclimb Security Technology is composed of two 8mm diameter steel wire ropes. When a fall occurs, both steel wire ropes are subjected to force simultaneously, resulting in a shorter braking distance compared to a single steel cable lifeline.

No special tools required for quick installation, easy disassembly, and easy replacement of accessories.

Double ropes are subjected to force simultaneously, doubling safety, and height operations are no longer "hangs on a line"

- Double steel cables under simultaneous force
- Unlimited installation length
- Full obstacle free passage
- 316 Stainless steel
- Component traceability code
- Multiple installation methods



The safety lifeline is the last line of defense to ensure the safety of personnel in the event of a fall, Please be sure to contact FCLIMB company or authorized distributors in advance to provide a special technical solution!

## Fclimb® anchor devices

Relying on the strong independent research and development capabilities of Fclimb safety Technology, we have designed and produced various anchoring devices to meet various height safety anchoring needs without altering the original building structure as much as possible. Personalized customization can be made according to the special needs of customers in their special work environment. Please consult Fclimb Company or authorized distributor for details.

- Can provide personalized solutions
- Special customization according to needs
- Own fall testing laboratory for verification
- CE certification testing

福攀® 安全锚固装置

FCLIMB® Anchor point

by **Fclimb**

### Fclimb® Connector



Galvanized Steel JM001

Stainless steel JM001S

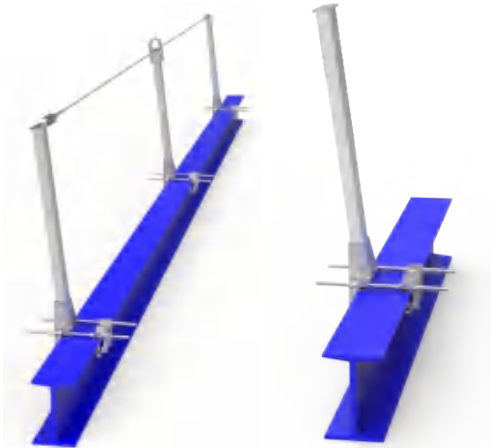
Safety connector, opening diameter 17mm, minimum breaking force 25KN;  
Complies with the CE EN362:2004/Q certification;  
Provide two materials for selection: galvanized steel and stainless steel.

### Fclimb® I-beam anchor column

Galvanized Steel 030101

Stainless steel 030101S

Special anchor columns for I-beams, which can be fixed on different specifications of I-beams;  
1 meter high, easy for workers to hold above the I-beam;  
Arranged on the side of the I-beam, without affecting the movement of workers;  
Can be used for permanent installation or temporary fixation;  
An installation column that can serve as a lifeline or anchor point.



### Fclimb® FA Anchor point

FA 030102

FA-r 030103

Stainless steel material, which can meet the long-term installation needs indoors and outdoors;  
Adapted to various fall arrest devices, easy and fast installation;  
Available in FA fixed and FA r free rotation options,  
Meet the installation needs of multiple environments.

### Fclimb® I-beam clamp

Stainless steel 030104

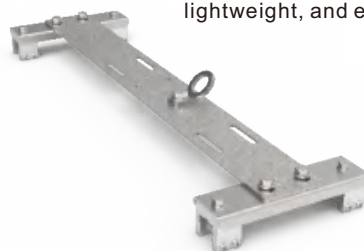
I-beam clamps can be fixed on different specifications of I-beams;  
Can be used for permanent installation or temporary fixation;  
Anchors that can serve as lifelines or anchor points;  
All stainless steel material, meeting indoor and outdoor anti-corrosion requirements;  
Provide multiple sizes for selection.




### Fclimb® Roof anchor points

Stainless steel 030105

Suitable for standing seam metal roof, can be used for temporary or permanent installation;  
Stainless steel material, suitable for long-term outdoor installation and use;  
Provide multiple specifications to choose from, lightweight, and easy to install.





福攀® 全身式安全帶

FCLIMB®

Full body harness

by **Fclimb**



Full body harness are essential basic protective equipment for height workers. Improper use of harness can lead to unpredictable serious consequences. To choose a safety harness, please consult FCLIMB Company or an authorized dealer!

FP-56A

Applied range : Wind towers, electrical pylons, Cleaning and maintenance of glass surface at height, working on structures in suspended and rescue situations.

<p>Front</p>	<p>Side</p>	<p>Back</p>
<p>Four fast adjustment <b>automatic buckle system</b> in aluminium</p>	<p>Two aluminium adjustment points</p>	<p>20cm wide thickened high wear resistant lumbar backplane</p>
<p>Two aluminium forged D-rings on the waist</p>	<p>Two large capacity tool holders</p>	<p>Aluminium forged D-ring and comfortable absorption plate on the back</p>
<p>Anchor point on the chest</p>	<p>Adjustable independent leg straps</p>	<p>Two fall indicators</p>
<p>Anchor point on the abdomen</p>	<p>Webbing storage device</p>	<p>Warning signs and instructions</p>

Applied range : Rooftop, Above the truck or machine, Skytrack, Climbing ladder, Limit operation, Emergency evacuation etc.



Front



Side



Back



Galvanized steel D-ring on the chest



Webbing storage device



Galvanized steel D-ring and absorption plate on the back



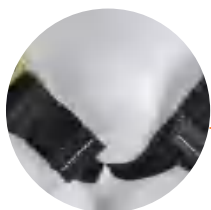
Tight seam safe and reliable



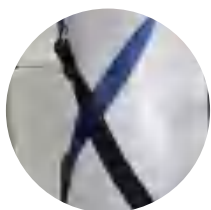
The main hanging point indicator makes the seat belt easier to wear



Warning signs and instructions



Crotch protection design



Fit the body and dress comfortably



Perfect hip guard belt

# FULL BODY HARNESS



FP-46

Applied range: platform operation, vertical climbing, positioning construction, equipment maintenance, ladder, tower climbing and moving operation, etc.



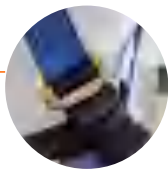
Front



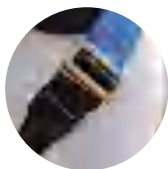
Chest hanging point and adjusting buckle



Abdominal adjusting buckle



Thoracic adjusting buckle



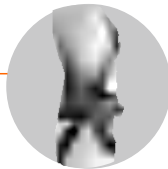
Leg adjustment buckle



Side



Compact structure, Dense suture Safe and strong



Fit for comfort



Perfect hip strap



Webbing storage device



Back



20cm wide Full surround comfort belt



Back galvanized forged D-ring and Energy absorbing back pad



Warning signs and instructions

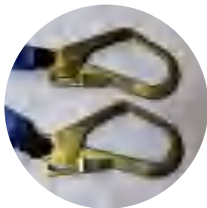


The main hanging point indicator makes the seat belt easier to wear

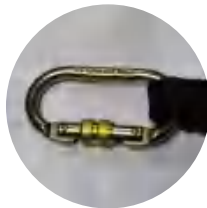
Used together with safety belt, it can be used in various working environments such as climbing, platform operation, limit operation, equipment maintenance, etc.



Recommended height 5.6m



Two steel cast scaffold hooks



One steel cast O-hook



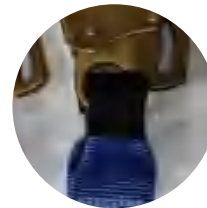
One energy shock absorber, which reduces the impact force below 6kn in case of falling, Maximum spreading length 1m



Webbing width 45mm, Length 1.5m



Tight seam safe and reliable



The part in contact with metal is provided with wear-resistant pad to prevent the webbing from wearing

### Recommended configuration

**Configuration list :**

- FP25 Double hanging point full body harness
- FP512 Double hook lanyard with absorber

**Application environment:**

platform operation, limit operation, equipment maintenance, ladder climbing, etc

**Reason for recommendation:**

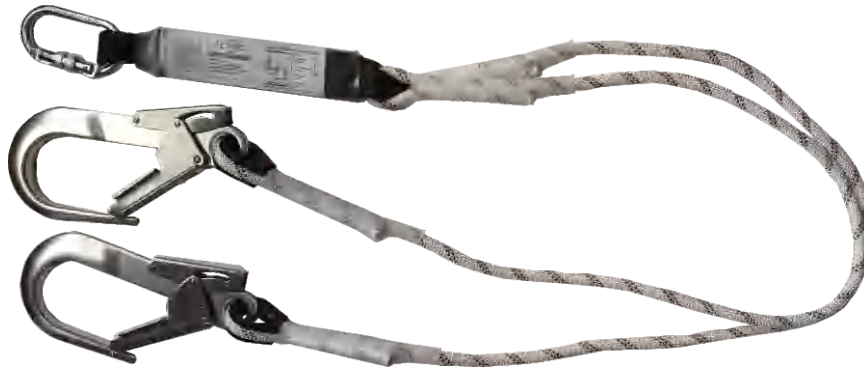
front and back double hanging points, wide application and economic benefits



# LANYARD WITH ABSORBER

FP-508

Used together with safety belt, it can be used in various working environments such as climbing, platform operation, limit operation, equipment maintenance, etc.



Recommended height 5.6m



Two aluminum cast scaffold hooks



One steel cast O-hook



One energy shock absorber, which reduces the impact force below 6kn in case of falling, Maximum spreading length 1m



Rope diameter 12mm, Length 1.5m



Tight seam safe and reliable



The part in contact with metal is provided with wear-resistant pad to prevent the webbing from wearing

## Recommended configuration

### Configuration list :

- FP46A Wind power rescue harness
- FP508 Double hook lanyard with absorber

### Application environment:

Wind tower and power tower operation, high-altitude rescue, hanging operation, ladder climbing, etc

### Reason for recommendation:

Specially designed for wind power and suspension operation, multi hanging points, wear-resistant back plate and aluminum accessories, light and comfortable.

