



**floors**

**CURING LACQUER**

*lacuris d*

**CONTINUOUS RESIN FLOORS**

*durepox auonivelante*

*duepox tixotrópico*

*pavitaís pi*

**HIGH DECORATIVE FLOORS**

*teais microcemento*

**CEMENT FLOORS**

*durimprés*

*tradur*

**OUTDOOR DECORATIVE**

*durimprés rehabilitación*

*eslurris sintético*

**FLOORS PAINT**

*epoais pin*

*epoais vinicola*

*paviais ac*

*pinluris*

*tais*

**FLOORS PROTECTOR**

*pavilac*

*potector teais microcemento*

*resimprés*

**FLOORS REPAIRS**

*duroais capa continua*

*duroais parcheo*

**ANTI-SKID TREATMENT *ander-***

*b*

**OTHER USES**

*teais pavimentos infantiles*

***Learn more about our full range of products  
www.teais.es***

## curing lacquer for mortars and concretes

lacuris d

**Lacuris d** is a curing lacquer based on synthetic resins with solvents which forms a protective barrier that prevents the premature water evaporation of mortars and concretes.

It's sprayed onto mortar or concrete surfaces, mainly in summer time or high temperatures to prevent premature water evaporation and allowing an appropriated setting.

Very suitable for concrete highways and roads, airport runways, industrial pavements, precast elements, canals, etc.

Packaging: 5 l, 20 l, 200 l  
Consumption: 8 sqm/l minimum



curing lacquer

## self-leveling mortar epoxy-cement for repairs

durepox autonivelante

**Durepox autonivelante** is a fluid consistence mortar made of epoxy resins and special charges, reinforced with polypropylene. It has a high mechanical strength and a fast commissioning.

It is highly suitable to repair industrial floor, rungs, charge and discharge area, docks, floors that a high resistance and a very good duration are required. As a temporally wall against the humidity before the application of coverings in floors that do not have a vapour barrier and they are into the ground. As a levelling layer to the application of resins floors, vinyl or wood floors due to its fast commissioning.

Packaging: 5 kg, 22 kg  
Consumption: 1,8 kg/l



resin floor

## durepox tixotropico

### epoxy cementitious mortar for repairs



**Durepox Tixotrópico** is a thixotropic consistency mortar based on epoxy resins and special fillers, reinforced with polypropylene. High mechanical strength and quick startup.

It's applied in repairing industrial floors, pavements subject to high mechanical requirements, patching on stairs, ramps, loading areas, as an adhesive for a resistant gluing on wood or metal holders, etc.



Packaging: 6 kg, 24 g  
Consumption: 1,8 kg/l

## pavitaís PI

### special epoxy resin for continuous floorings



**Pavitaís Pi** is a two-component epoxy resin with high solids contents.

For use in self-leveling continuous floors, antiskid finish floors, mortar-based floors, medium and high mechanical strengths.

For laboratories, food factory, hangars, loading dock, chemical industry, assembly industry, etc.



Packaging: 4 kg, 21 kg  
Consumption: 2,5 to 3 sqm per kg of 300 microns layers

## coating made with polymer cement microcement

teais  
microcemento

**Teais microcemento** is a coating made with two components, cement and polymer with cement or polished concrete aspect, suitable for floors and coatings on multiple holders.

It has great possibilities for decoration and flooring, on the floor and on the walls.

It can be applied on tile tiles, on plasterboard, plywood furniture, etc.



Packaging: 4 kg, 20 kg

Consumption: 1 to 2 kg/sqm according to support

high decorative floors

## coloring powder and surface hardener of stamped concrete floors

durimpres

**Durimpres** is a mineral powder hardener for stamped concrete with rubber molds. It is ready to use and colored, cement based, selected quartz arid, pigments and additives.

It provides color and surface hardness for stamped concrete floors. Its most common applications are entrances of garages, paths, parks, or gardens, external areas of public spaces, exteriors of urbanizations, etc.



Packaging: 25 kg

Consumption: 3 to 5 kg/sqm

cement floors

## tradur

### colored mineral hardener for making of concrete floors



*Tradur is a solid product in powder and grain, which sprinkled over the surface of concrete slabs at the time of its construction provides a substantial increase in hardness rolling is formulated based on quartz aggregates selected, special binders, additives and pigments .*

*The product is used for car parks and garages. Industrial floors, loading and unloading areas, hangars, commercial areas, intensive pedestrian zones, streets, squares, courtyards, etc.*



Packaging: 25 kg  
Consumption: 2 to 3 kg/sqm

## durimpres rehabilitación

### predosed mortar for stamped concrete on thin layer



*Durimpres Rehabilitación is a special mortar based on cementitious binders, quartz aggregates, pigments and additives. Specially for implementation of stamp concrete on thin layer.*

*Stamp concrete on thin layers from 1.5 to 2 cm thickness to apply on concrete floors or also on existing stamp concrete that are to be renewed.*



Packaging: 25 kg  
Consumption: 20 kg/sqm per cm of thickness

## sports floor made of synthetic resins

## eslurris sintético

**Eslurris sintético** consists of a paste-like product made of a uniform mix of aggregates, graded mineral fillers and thermoplastic synthetic resin based emulsion.

Used as sealing material for asphalt agglomerate under construction and public works. For the finishing of parking areas and garages. For protection of light traffic area. For sports floors, garden paths, bike paths, garages, depots, etc.



Packaging: 25 kg

Consumption: 1 to 1,5 kg/sqm

outdoor decorative

## epoxy floor paint

## epoais pin

**Epoais pin** is a floor paint based on epoxy resins with high solid contents with very good properties of chemical and mechanical strength.

Suitable for painting floors in several applications such as garages, offices, industry, industrial buildings, stores, etc. It is not suitable for outdoor applications.



Packaging: 4 kg, 21 kg

Consumption: 0,5 kg per sqm in 2 layers

floors paint

## epoais vinícola

### sanitary epoxy floor coating



Is a two-component epoxy coating specially designed for food industry. Good resistance to wine, olive-oil, some solvents, hydrocarbon.

It is used in the food industry, mainly in wine sector, wine cellars floorings, wine vats, oil industry, mills, etc.



Packaging: 1 kg, 12 kg  
Consumption: 1 kg per sqm of 300 microns film

## paviais ac

### industrial paint based on polyurethane and acrylic



Product formulated with polyurethane and acrylic resins, two components (base and reactor), designed to superficially harden and decorate concrete pavements and as anti-dust treatment. For indoor and outdoor using, considering that it may tend to yellowing in outdoors.

In the protection and decoration of concrete or mortar pavements in various applications such as;

- Industrial warehouses
- Sports courts
- Labs
- Hospital wards
- Computing rooms
- Exhibition centers
- Warehouses, food industries, etc.



Packaging: 6 kg, 30 kg  
Consumption: 3 sqm per kg in two layers



## acrylic floor paint

### pinlurris

**Pinlurris** is a paint based on pigmented synthetic resins of high quality.

The product is used as a finishing paint by Eslurris Sintético on concrete and asphalt, such as tennis courts, industrial shed floors, garages, parks, urbanizations and chalets, sports grounds in general, etc.



Packaging: 5 kg, 22 kg  
Consumption: 5 sqm per kg

floors paint

## decorative protector and anti-dust treatment based on chlorinated rubbers

### tais

**Tais** is a single-component product based on pure chlorinated rubber combined with mineral pigments with a very good light stability, conceived as a protective treatment, decorative and dustproof on concrete floors.

As finishing on fiber-cement sheets and concrete floors both indoors and outdoors, with waterproof properties, very good adhesion to building holders, resistant to alkalinity, for moderate traffic areas.



Packaging: 0,75 l, 4 l, 20 l  
Consumption: 3 sqm per l

floors paint

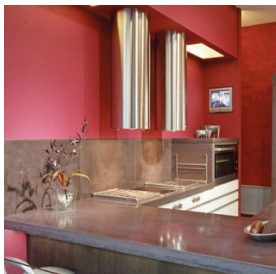
**pavilac****polyurethane varnish to protect and rehabilitate synthetic floors**

***Pavilac** is a two-component polyurethane for refurbishing and protecting synthetic floorings (vynil, linoleum, etc).*

*PAVILAC is applied to renew the appearance of existing floorings or give an additional protection to new floorings, improving its durability and appearance.*



Packaging: 4 kg, 20 kg  
Consumption: 5 to 6 sqm/l

**protector microcemento****special protector for thin pore surfaces**

***Protector Teais-Microcemento** protector is a liquid product with low viscosity, high penetration, very high resistance to spots. Formulated with special resins, compatible with microcement and mineral supports.*

*It is used for protecting pavements, walls, worktops, etc*

*Cladding with TEAIS MICROCEMENT. Suitable in outdoors and indoors. It also can be used for the natural and artificial stone surfaces, etc.*



Packaging: 0,75 l, 5 l, 20 l  
Consumption: 5 to 6 sqm/l according to support

## **finishing resin for stamp concrete floors.**

### **resimpres D**

*Resimpres D is a special solvent based resin specially formulated for the protection and finishing of printed concrete.*

*Is apply as a finishing resin to polished concrete floors, and stamp concrete floors. Provides a significant aesthetic improvement, and protects the surface improving its durability.*



Packaging: 5 l, 20 l, 200 l  
Consumption: 8 sqm per l

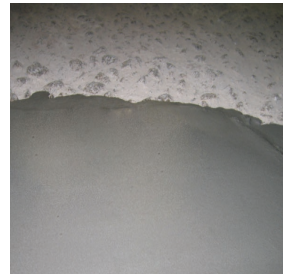
floors protector

## **continuous industrial flooring**

### **duroais capa continua**

*Duroais Capa Continua is a two-component products. One part is powder based on quartz aggregates, cement-based bonding agents and additives. The other part is liquid as a resin based on copolymers.*

*It is used to regularise surfaces ( provided that the differences are not bigger than 5 mm) on floorings for garages, parkings, petrol-stations, etc*



Packaging: 31 kg  
Consumption: 4,5 kg/sqm in 3 mm layers

floors repair

## duroais parcheo

### industrial floor repair



**Duroais Parcheo** is a powder product that is mixed with water. To patching up on concrete floors. Based on cement-base bondings, quartz aggregates and additives.

It is used for filling potholes on concrete floorings that requires a good mechanical resistance and durability. For industrial facilities, stores, load and download areas, interior and exterior floorings, etc. Is very suitable to patching up and fillings in areas wheres subsequently regularization layers will be done with DUROAIS CAPA CONTINUA.



Packaging: 25 kg  
Consumption: 1,8 kg/l

## ander b

### anti-skid chemical treatment for intermediate requirements



**Ander B** is a chemical antiskid flooring treatment based on active substances that generate a microporosity in the holder.

It is applied on moderate traffic areas which requires to avoid sliding. For indoor and outdoor pavements, in shower trays or non-plastic bathtubs. Ander B it's also used when you want to apply pavement paints on vitrified tiles, improving paint adhesion. Ander B can also be used as a previous step for the application of Ander F, when the application should be performed on vitrified holders to provide an adequate adherence for the treatment.



Packaging: 1 l, 5 l, 25 l  
Consumption: 5 to 6 sqm/l according to support

## *elastic and continuous pavement system based on rubber and polyurethane resins*

## **pavimentos infantiles**

*Teais pavimentos infantiles, is a continuous and elastic floor, ideal for playgrounds for children, etc. It is formed by rubber granules and is divided into two layers differentiated and bonded with a polyurethane resin **Teais pol SG**.*

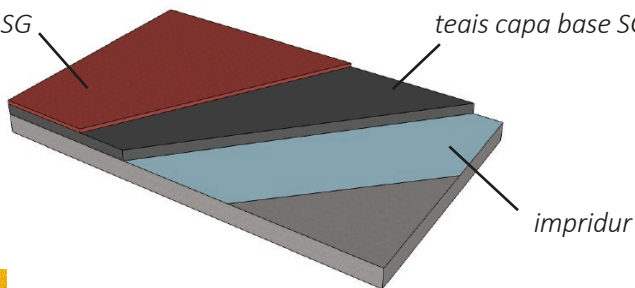
*The system can be applied on rigid surfaces (concrete floors, terrazzo floors, asphaltic layers, etc.) which have an adequate slope for the evacuation of water.*

*It is recommended to apply Impridur beforehand to improve the adhesion of the substrate.*



*teais capa color SG*

*teais capa base SG*



*teais capa color SG*  
1-4 mm



*teais pol SG*



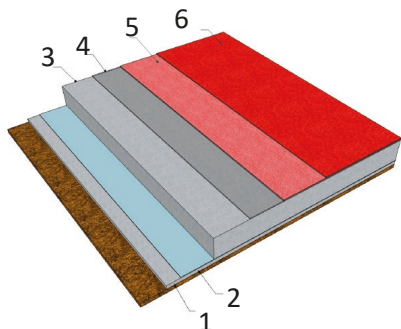
*teais capa base SG*  
5-7 mm



*impridur*

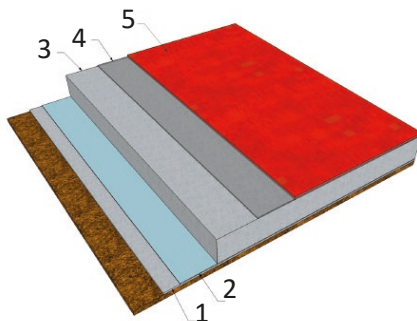
## For slabs with a vapour barrier

### Pavitais PI self-leveling



1. Concrete
2. Vapor barrier
3. Slab
4. Impridur
5. Pavitais PI + arcuais 0.2-0.8
6. Pavitais PI

### Pavitais PI antiskid



1. Concrete
2. Vapour barrier
3. Slab
4. Impridur
5. Pavitais PI

**Pavitais Pi** is a high performance resin for making floors that require chemical, mechanical and aesthetic properties.

*Ideal for creating floors of various types, with a smooth or non-slip finish.*

*From the point of view of chemical resistance, floors made with Pavitais Pi have high resistance to various chemicals, so it is particularly suitable in environments and premises where there may be accidental discharges, as well as in toilets, bathrooms, kitchens, work areas, etc. It is also very resistant to cleaning products.*

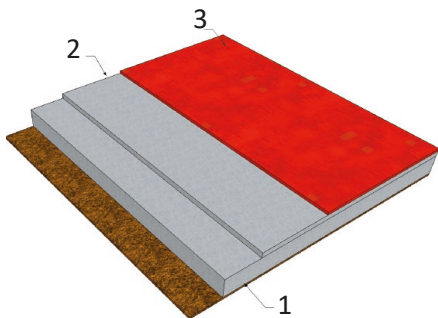
*Its mechanical strength is extraordinary, it is the ideal coating for areas of intense work.*

*It is available in a wide range of colors, thus being able to adapt to all the projects of decoration.*

*The Pavitais Pi floor system is a very diverse solution, both for the naval industry, foodstuffs, all types of industries in general.*

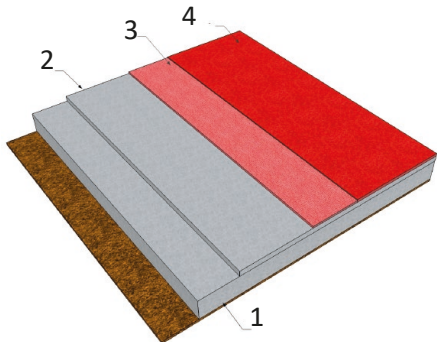
## For slabs without a vapour barrier

### **Pavitaís PI self-leveling**



1. Slab
2. Durepox autonivelante
3. Pavitaís PI + arcuais 0.2-0.8

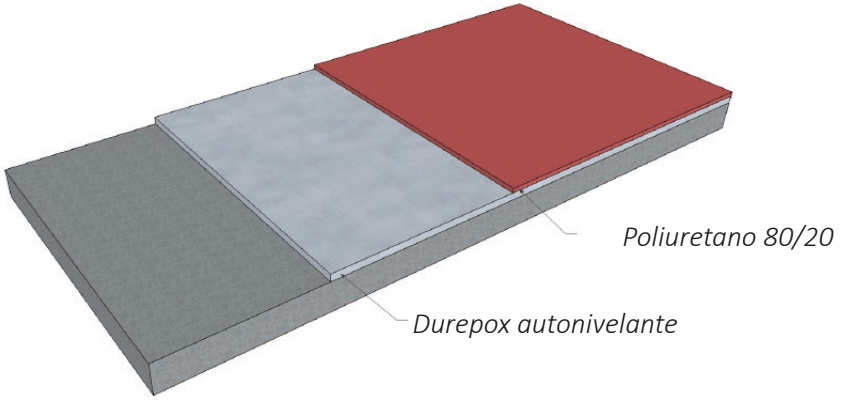
### **Pavitaís PI antiskid**



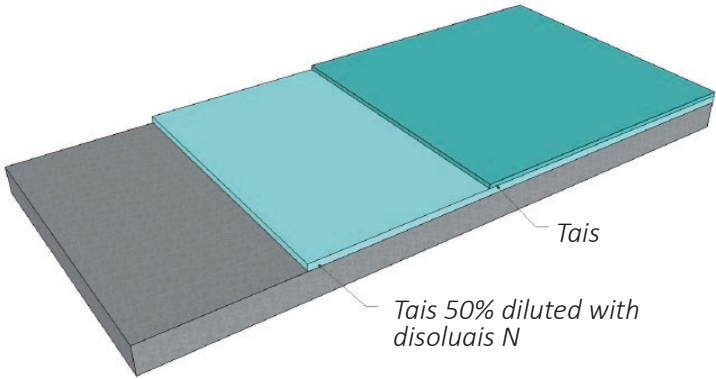
1. Slab
2. Durepox autonivelante
3. Pavitaís PI + arcuais 0.2-0.8
4. Pavitaís PI



**Poliuretano 80/20**



**Tais**



**Tais antiskid**

