



CADENAS PRODUCTIVAS SOSTENIBLES, EL SALVADOR.
SUSTAINABLE PRODUCTION CHAINS, EL SALVADOR.

WHAT DOES CAPROS DO?

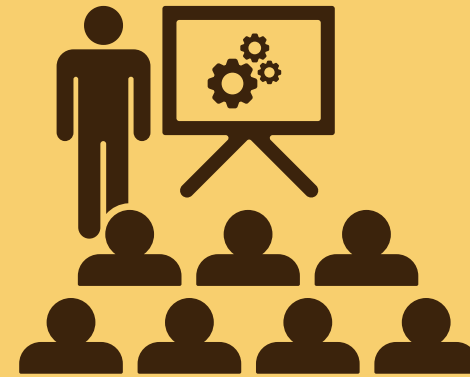
CAPROS is a technical and commercial intermediation platform for cocoa in El Salvador. It connects cocoa producers with markets, bridging gaps in technical assistance, quality, and traceability that currently limit the value of Salvadoran cocoa. CAPROS was legally established on February 24, 2026.





2000

Cacao-producing families



10%

Receives training and technical assistance.

DIAGNOSIS OF THE CORE PROBLEM



1%

Transforms CACAO into chocolate and derived products.



\$12M

Annual → Minimal share goes to the producer.

(Source: CENTA 2024; Alianza Cacao El Salvador (with support from CRS, Swisscontact, MAG, BID Lab, 2023); Mesa Nacional del Cacao.)

REAL ROLE OF CAPROS

- Producer–market integration
- Foster generational succession
- Continue advancing regenerative agriculture
- Create high sustainable value for producer families
- Quality control and standardization
- Processing coordination
- Traceability and technical documentation
- Commercial negotiation

PROBLEM ADDRESSED

- Limited access to continuous technical assistance in cocoa production.
- Deficiencies in post-harvest processes, quality control, and standardization.
- Producers sell cocoa as an undifferentiated raw material.
- Limited local processing and loss of added value.
- Restricted access to specialized markets.



WHERE DOES INTERMEDIATION ADD VALUE?

CAPROS operates at critical points in the value chain:

- Applied technical training
- Fermentation and drying supervision
- Classification and quality parameter control
- Primary and secondary processing
- Consolidation of volumes and lots

This reduces technical and commercial asymmetries.

PRODUCTS CHANNNELED BY CAPROS

According to market and technical requirements:

- Fermented and dried cocoa
- Cocoa nibs
- Cocoa paste / liquor
- Cocoa butter
- Cocoa powder
- Artisan chocolate

CAPROS does not industrialize at large scale; it coordinates and validates processes.

TECHNICAL APPROACH

- Good agricultural and post-harvest practices
- Agroforestry systems
- Progressive quality improvement
- Cocoa territorial identity
- Basic lot traceability
- Practical, verifiable approach—not theoretical.



TRIPLE IMPACT



Benefit producer families through value, knowledge, and legacy.



Increase these families' income (+30%).



Restore soils; regenerate 75 ha.

SCALABILITY AND SUSTAINABILITY



15 tons of cocoa, driven by Triple Helix partners.



EXPECTED BUSINESS MODEL



70%

**Salvadoran dried
cocoa beans**

10%
Training and technical assistance.



20%

**Salvadoran chocolate and
derivatives**

CURRENT STATUS

- Pilot model in operation
- Producers identified and supported
- Active commercial channels
- Under technical and academic validation



CAPROS is in a fine-tuning phase, not in mass expansion.

TEAM WITH EXPERIENCE



Lic. Mónica Herrera
Founder

Currently, CAPROS is in its startup and structuring phase and does not yet have a fully established team. This stage is focused on defining the operational and strategic model, which will enable the integration of the necessary talent in a subsequent phase to strengthen the cocoa value chain and scale the project's impact. In the meantime, CAPROS works with strategic partners and temporary personnel for specific tasks.

INVESTING IN CAPROS MEANS INVESTING IN THE FUTURE OF SALVADORAN CACAO.

40%

Upgrade our infrastructure
and quality control
equipment.

45%

Cocoa-to-chocolate
processing and
commercialization.

15%

Cocoa-to-chocolate
processing and
commercialization.



CAPROS



moni@caprossv.com

**WITH CAPROS, EVERY DOLLAR GENERATES
TRIPLE IMPACT:
SOCIAL, ENVIRONMENTAL, AND ECONOMIC.**