



Envolventes inteligentes





Planta de producción

Aquí hacemos de lo imposible una realidad



## ¿how do we develop The most efficient solution?

- **An Unique and specialized FRP factory** (Fiberglass reinforced Plastic).



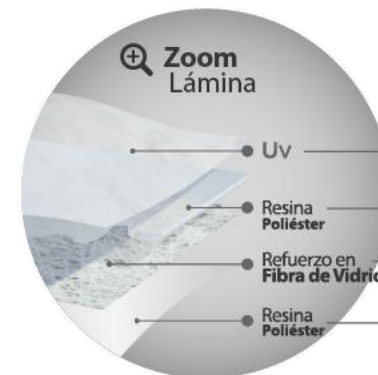
1. Advanced Technology.



2. More than 800l  
lm per day.



3. HQ with more  
than 4000sqm of  
bioclimatic design.



**2UV** People and Objects protection.



**QR Plus Extreme** Chemical Resistance



**Resistance**



**Durability**

- **TEAM:** A professional team of specialist ready to solve any challenge

### Técnicos Expertos en Apoyo Multidisciplinario



Bioclimatic



Mechanical &  
Civil Engineers



Architects and  
Industrial designers



Comercial  
Director



Construction  
Experts



Architectural  
Draftsmen



Specifications  
Consultants





In



Si



De

How we add  
**value to your purpose?**

Through the develop of FRP construction and architectural solutions, optimizing the day light benefits and protecting the buildings form external factors to give comfort, durability and **ROI**.

**E**

An ecological and comercial option in standard measure with a perfect balance between quality and price.

Consult  
profiles



**Profiles**

Arquitectonica 72  
Arquitectonica 101  
Master 1000  
Perfil 7

Colors

LT:34%  
Perla

LT:65%  
Vitro

**FI**

The most common profiles in commercial lengths and an standard ice color.

Consult  
profiles



Colors

LT:48%  
Ice

\*Ready in stock



CIEN



All the exiplast versatility ready to work for the industrial, commercial and institutional applications. Product only on request in a large range of colors, thickness, and finishes. We can develop a solution according to all the requirements of the customer.

Consult 100 profiles



Translucent colors\* available to CIEN and TEAM

LT: 48%	LT: 65%	LT: 34%	LT: 49%	LT: 34%
Ice	Clear	Bleu	Titanium T3	Titanium T5

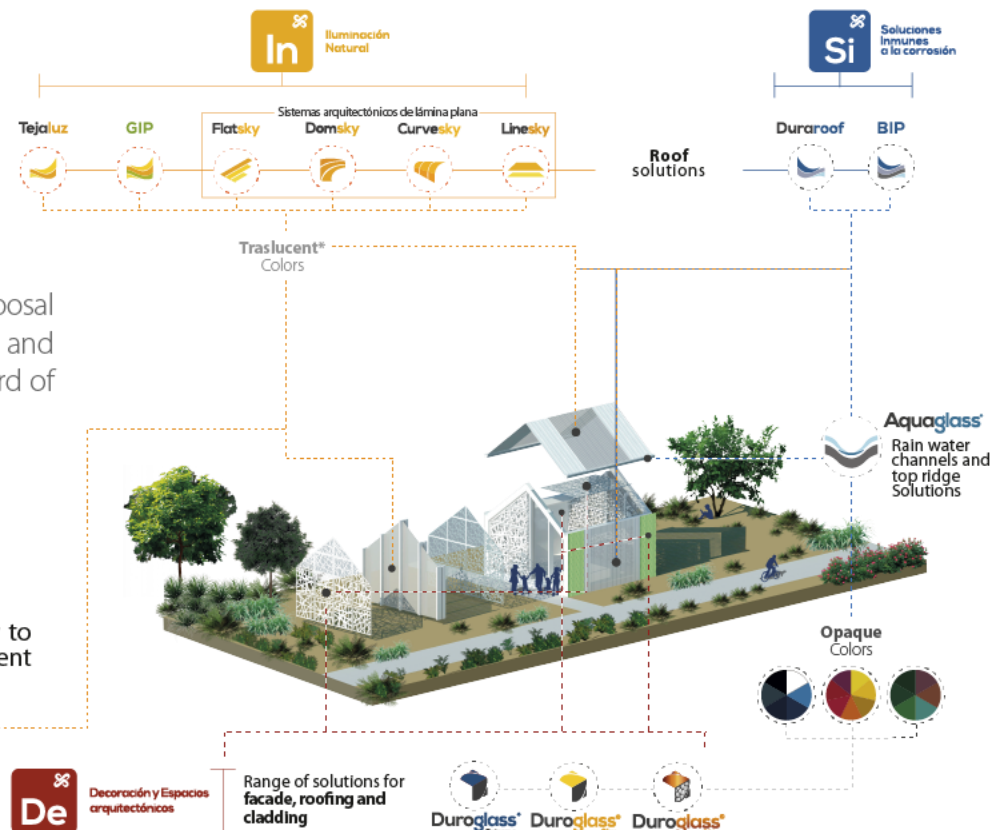


The knowledge of our entire TEAM at the disposal of each project in order to create a unique and intelligent envelope with the highest standard of comfort, functionality and aesthetic design.

### Intelligent Envelope

The intelligent envelope is the most efficient way to coat a building structure, responding to environment exigences.

TE



Performance boosters.

Resina retardante al fuego	Fórmula Química Especial	Película aséptica grado de alimentos	Acabado Diamantado difusor de luz	Pigmento Termoselectivo y Bloqueo IR	Protección externa e interna con triple filtro Ultravioleta	Recubrimiento extra ante abrasión	Elimina Virus y Bacterias



**Durarroof®**

An ideal solution to create safe, comfortable and durable spaces on environments with high corrosion levels or chemical expure.

## Benefits

- Ideal on spaces with high asepsis requirements.
- High Chemical resistance for a long durability in corrosive environments.

## Colors\*

Gamma  
Opaque colors

**Integrales**



Gamma  
Opaque colors

**SPF**



Gamma  
Metallic Colors

**SPF Radiance**



\*The final color may vary from the image  
\* Possibility of developing custom colors

## Performance boosters\*

Additives that maximize the performance of our solutions to ensure optimal performance against extreme situations and severe environmental factors present throughout the useful life of any building.



**EXclean**



**SPF Plus Extreme**



**FR Plus Extreme**



**QR Plus Extreme**



**3UV**



**COVEX**

\* Performance boosters only on request with additional cost.



Imagen de referencia

Aseptic panel for interior applications with special protection against fungus and bacteria

## Benefits

- ✓ Stability on temperatures between -24°C and 82°C.
- ✓ Possibility of an additional protection with and **certified FDA** additional layer.
- ✓ High impact and corrosion resistance.
- ✓ Easy to clean and minimal maintenance.

## Applications



Zoom  
Lámina

- Uv  **2Uv** People and Objects protection.
- Resina Poliéster  **QR Plus Extreme** Chemical Resistance
- Refuerzo en Fibra de Vidrio  **Resistance**
- Resina Poliéster  **Durability**

## Colors\*

Gamma  
Opaque colors

Integrales



Gamma  
Opaque colors

SPF



Gamma  
Metallic Colors

SPF  
Radiance



\* The final color may vary from the image  
\* Possibility of developing custom colors



## Performance boosters\*

Additives that maximize the performance of our solutions to ensure optimal performance against extreme situations and severe environmental factors present throughout the useful life of any building.



\* Performance boosters only on request with additional cost.

---

# Projects

---







**Línea TEAM:** (+57) 317 615 9181

**Planta de producción:**

Km 8 Autopista Medellín V. La punta.

**Ventas a nivel nacional**

[www.exiplast.com](http://www.exiplast.com)  
[informacion@exiplast.com](mailto:informacion@exiplast.com)

 Exiplast |  TvExiplast |  TvExiplast El

