



PAMPA  
DEL CORRAL



PAMPA DEL CORRAL · BOUTIQUE HOTEL  
Coyhaique



Ecofriendly



## THE HOTEL

Pampa del Corral Boutique Hotel is located five minutes from the center of Coyhaique, immersed in a large lot of more than 10,000 m<sup>2</sup>.

Surrounded by the typical vegetation of the area, its location allows a unique connection and view, from where to appreciate and feel, in 360°, the amazing landscape of Patagonia Aysén.

A unique hotel to enjoy a fascinating destination.





## ROOMS

The hotel has 7 spacious rooms with private bathroom, smart TV, independent heating, wifi connection, terraces and biodegradable bath articles of herbs, flowers and fruits of the area such as calafate, linden, maqui, rosehip. All the bedding its made of organic cotton and satin, antiallergic and feathers 100% feather.

Unique spaces designed for relaxation.





## 7 ROOMS

### Superior Double Room with terrace

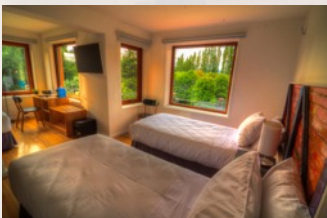


**Number of rooms:** 3  
**Room area:** 25 m<sup>2</sup>  
**Bed:** Queen 1.50 x 2.00  
**Max capacity :** 2 pax

#### Room equipment:

Double room with patio terrace / Sofa / Desk / Shower / Hair dryer / Biodegradable natural amenities / Organic cotton rods / Hypoallergenic sheets 300 satin threads / 100% feather down / Feather and microfiber pillows / independent Heating thermostat / Wi-fi / Closet / Smoke detector / Safety box

### Standard Room (double / triple / quadruple)

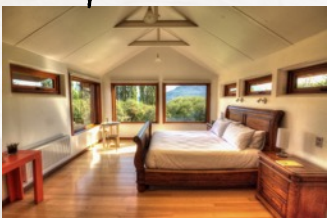


**Number of rooms:** 3  
**Room size:** 33 m<sup>2</sup>  
**Bed:** King Bed 1.80 x 2.00.  
**Alternative:** 4 beds Twing 90 x 2.00.  
**Max capacity :** 4 pax

#### Room equipment:

Room with desk / Shower / Hair dryer / Biodegradable natural amenities / Organic cotton towels / Hypoallergenic sheets 300 satin threads / 100% feather down / Feather and microfiber pillows / independent Heating thermostat / Wi-fi / Closet / Luggage carrier / Smart TV / Radio cell phone charger, ipod stand / nespresso coffee machine / Smoke detector / Safety box

### Superior Suite Room



**Number of rooms:** 1  
**Room surface area:** 34 m<sup>2</sup>  
**Bed:** King Bed 1.80 x 2.00  
**Max capacity :** 2 pax








#### Room equipment:

Room with desk / Shower / Hair dryer / Biodegradable natural amenities / Organic cotton towels / Hypoallergenic sheets 300 satin threads / 100% feather down / Feather and microfiber pillows / independent heating thermostat / Wi-fi / Closet / Luggage carrier / Smart TV / Radio cellular charger, ipod support / Nespresso coffee machine / Smoke detector / Safety box



## Others Services

The hotel also has the following services:

-  ✓ Breakfast, included in rate
-  ✓ Transfer to and from the airport
-  ✓ Special programs
-  ✓ Lunch / Dinner on request
-  ✓ Laundry (for a fee)
-  ✓ Hot tube (for a fee)
-  ✓ Mountain bikes (for a fee)



THERE IS THE POSSIBILITY OF THE COMPLETE RENTAL OF THE HOTEL, WITH MAXIMUM CAPACITY OF 20 PEOPLE.



## 2018 – 2019 Rates

### High Season

August 10th – May 31th

	Agency	Rack
D.R. Single Use	100 USD	125 USD
Double Standar	160 USD	200 USD
Triple Standar	215 USD	269 USD
Quadruple Standar	268 USD	336 USD

Suite Deluxe	180 USD	216 USD
--------------	---------	---------

Half Board	35 USD per pax
------------	----------------

### Low Season

D.R. Single Use	90 USD	118 USD
Double Standar	140 USD	168 USD
Triple Standar	195 USD	249 USD
Quadruple Standar	248 USD	316 USD

Suite Deluxe	160 USD	200 USD
--------------	---------	---------



## Special Programs

### WALK ALONG NATURE

- DAY 1: Airport - hotel / Aperitif welcome, trekking or Hot Tube hotel / Dinner at Hotel.
- DAY 2: Lake Gral. Carrera, Ibañez, / Tour by three Lakes / Villa Cerro Castillo trekking, optional, Roast lamb on the stick.
- DAY 3: Enchanted Forest all day tour/ Dinner at Hotel.
- DAY 4: All day Bike / Pigeon River / Caro Lake / Dinner at Hotel.
- DAY 5: Horseback riding around Coyhaique / Dinner at Hotel.
- DAY 6: Puerto Aysen Kayak or float on the river / Scenic route / Dinner at Hotel.
- DAY 7: City Tour / Transfer Hotel - Airport.



RACK RATES	2 PAX	4PAX	6PAX	8PAX
3N/4D	\$1861	\$2593	\$3146	\$4014
4N/5D	\$2411	\$3291	\$4104	\$5255
5N/6D	\$2957	\$4123	\$5062	\$6495
6N/7D	\$3501	\$4912	\$6019	\$7735

AGENCY / TOUR OPERADOR RATES	2 PAX	4PAX	6PAX	8PAX
3N/4D	\$1692	\$2357	\$2860	\$3649
4N/5D	\$2192	\$2992	\$3731	\$4777
5N/6D	\$2688	\$3748	\$4602	\$5905
6N/7D	\$3183	\$4466	\$5472	\$7032

values expressed on a double occupancy room.  
values expressed in USD (without VAT)



## Special Programs

### MTB PATAGONIA

- Duration: 4 days / 3 nights
- Includes:
  - MTB guide, specialized bicycles, electric
  - Double room accommodation
  - All transport within the region of Aysén
  - In-out airport hotel
  - Lunch and dinner boxes
  - Crossings with and, without technical difficulties, unevenness, ideal for family group, to start in the MTB or advanced.

---

VALUE: \$ 1.200 USD per person / min 4 pax.  
Ask for individual value.  
10% agency commission.



# General Conditions

## RESERVATIONS

- All reservations for individual passengers or groups must be requested by e-mail to [info@pampadelcorral.com](mailto:info@pampadelcorral.com)
- During the reservation, must be provide client's full name, number of accompanying persons and contracted services.

## PAYMENTS

- Reservations must be pre-paid in US Dollars or Chilean Pesos, according to the negotiated rates. If this requirement has not reached the Hotel before the check-in of the guest or the group, the Hotel may cancel reservations and dispose of the rooms according to their needs.
- Pampa del Corral Hotel Boutique will invoice the services provided once the clients leave the Hotel or the contracted services have been terminated and the agency or tour operator has made the total payment of these.
- Once the deposit has been made, the information must be sent to Pampa del Corral Hotel Boutique, to reduce the payments of the Customer Account. For this it must be sent an email to [info@pampadelcorral.com](mailto:info@pampadelcorral.com) indicating the customer's name along with a copy of the deposit or transfer slip.
- Data transfer: SOCIEDAD DE TURISMO KATHERINE TRAEGER GIMENO E.I.R.L.



BANCO DE CHIL  
RUT: 76.525.695-K

PESOS ACCOUNT: 0-280-04792-04

USD ACCOUNT: 52800479209

SWIFT: BCHICLRM  
ABA: 026005652



# General Conditions

## CHECK IN / CHECK OUT

- Check in at the Hotel is from 3:00 p.m. Check out time is till 12:00 noon.
- If you require different hours of entry or exit, they will be subject to room availability and additional charge.

## CANCELLATIONS AND PENALTIES

- Any cancellation of reservations must be made by email to [info@pampadelcorral.com](mailto:info@pampadelcorral.com) and received within the indicated periods.
- All reservations must be prepaid by the 50% at the time of booking. The cancellation of individual reservations can be made up to 60 days before the arrival of the guest, reimbursing the 50% prepaid.
- Reservations that are not canceled within this period will be charged as no show, according to the negotiated rate.
- For groups cancellation, applies cancellation policy reported below:
  - We accept 100% cancellations in booking groups with at least 90 days in advance.
  - We accept 50% cancellations in booking groups at least 45 days in advance.
  - We accept 20% cancellations in booking groups at least 35 days in advance.
- The charge for No Show will be equivalent to the value of the first night of accommodation per room and in national currency.





PAMPA  
DEL CORRAL



*Contact information*

KATHERINE TRAEGER

[info@pampadelcorral.com](mailto:info@pampadelcorral.com)

+56 9 8528 5680

+56 9 8270 5323



PAMPA  
DEL CORRAL