



# RADDION

Innovative RF Design

May. 2019

# Services



**RF design**



**Testing**



**Feasibility study**



**Outsourced Engineering**

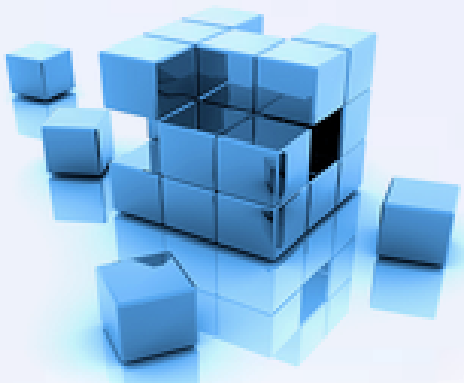


**Consulting**



**Tech Support**

# Services- Turn Key



**Design**



**Manufacturing**

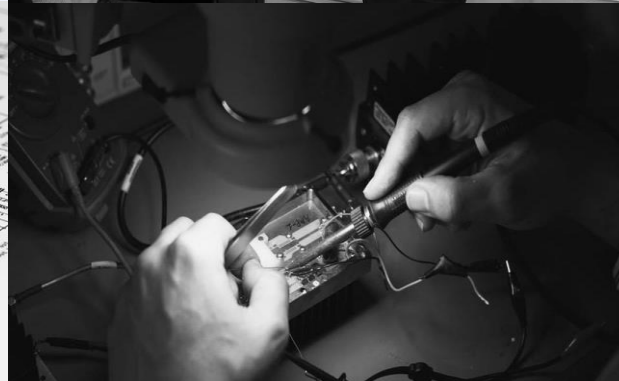
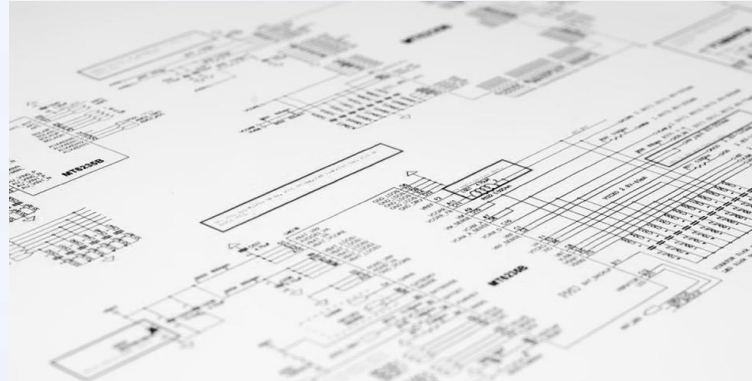
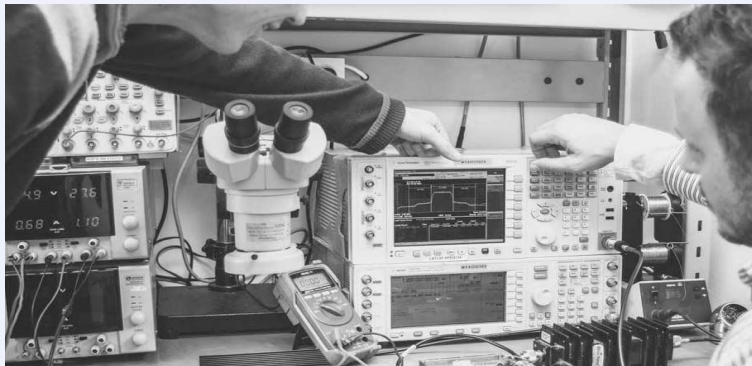


**Testing**

# Facilities

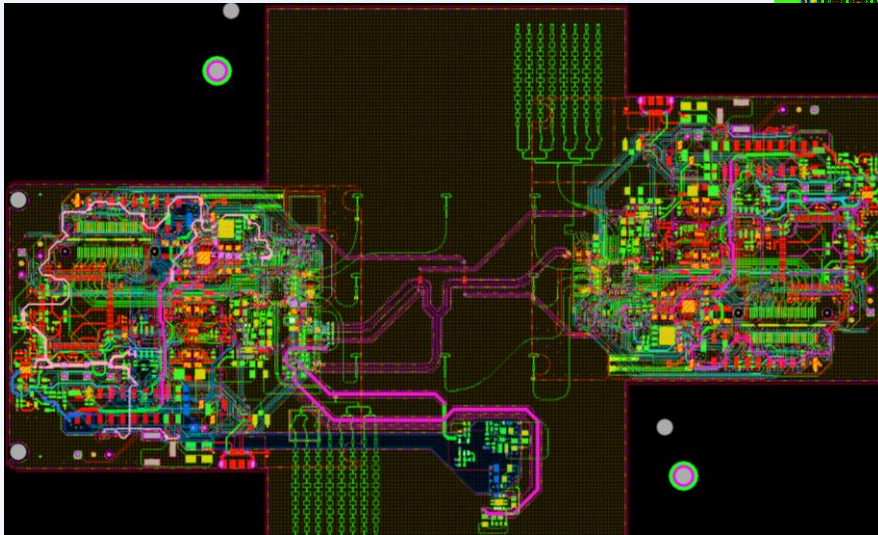
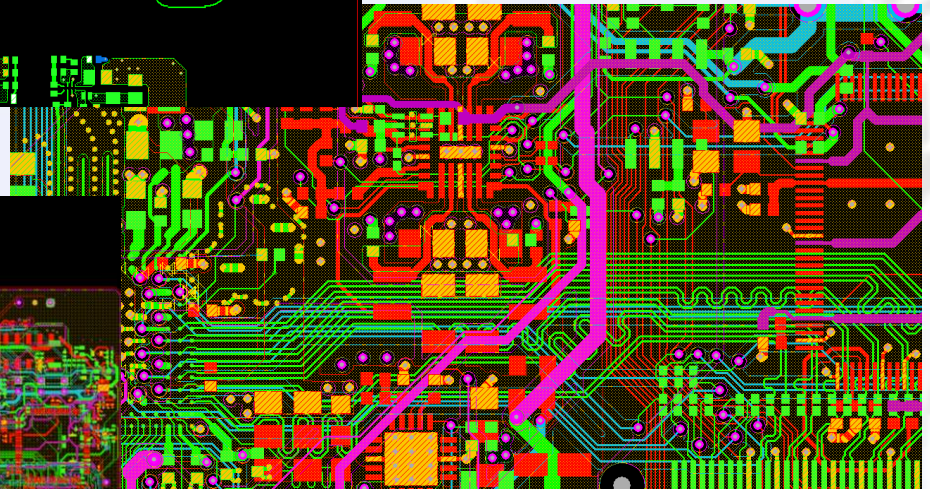
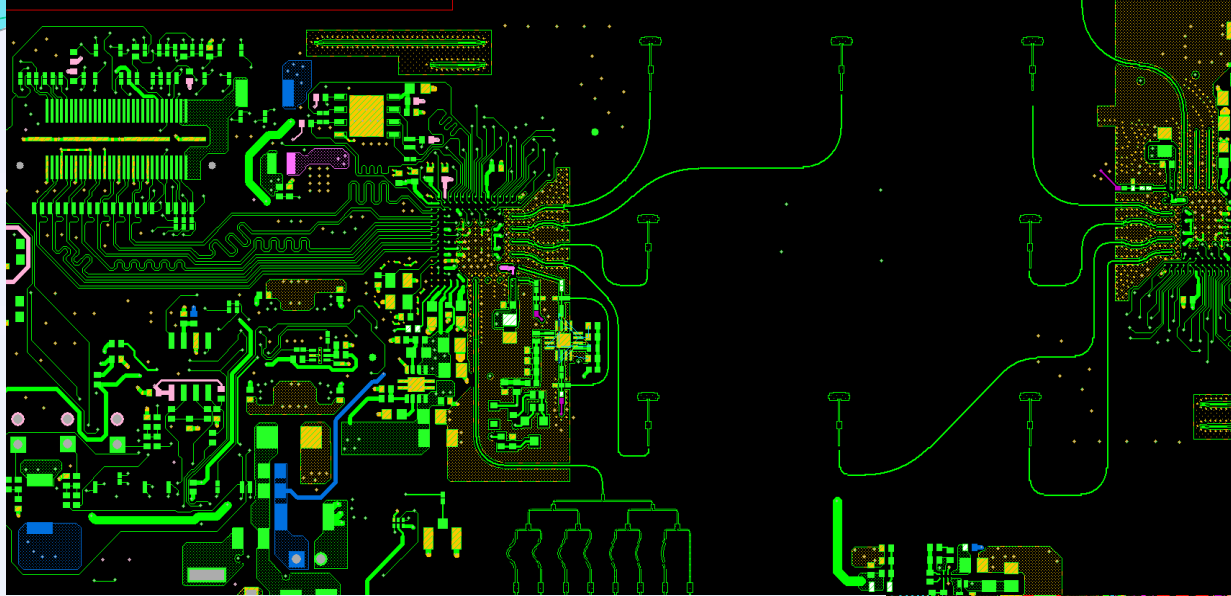
RADDION is located in Tel Aviv.

Within our premises you can find a complete R&D infrastructure, Labs with advanced RF Test equipment (up to 30GHz.) that supports a wide range of ongoing projects.



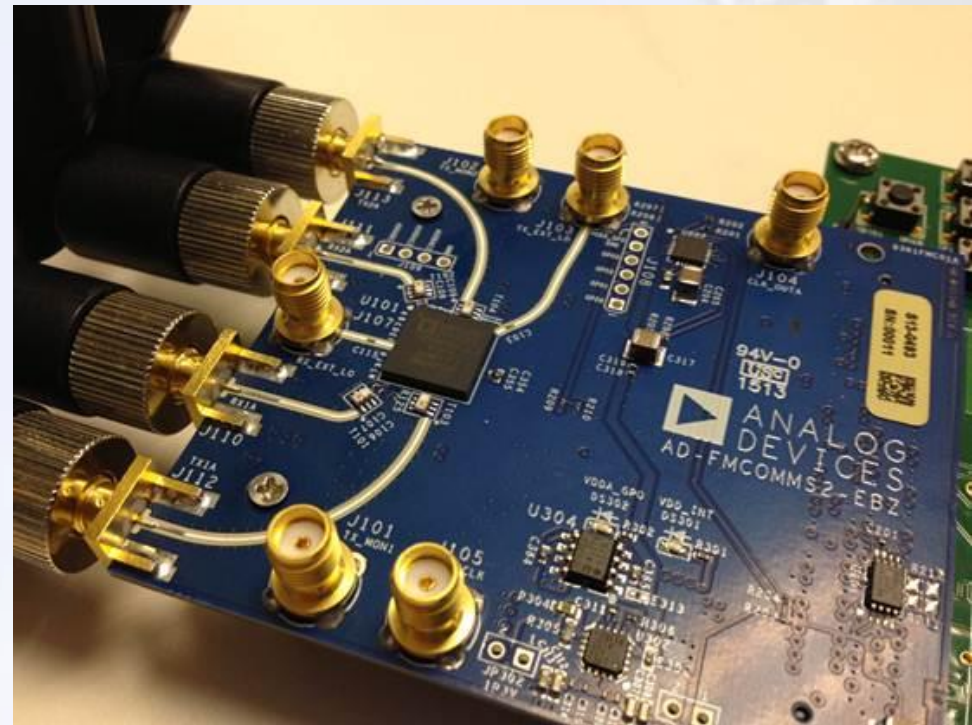


# 80GHz Automotive radar



# Telecom 4G/5G Radio design

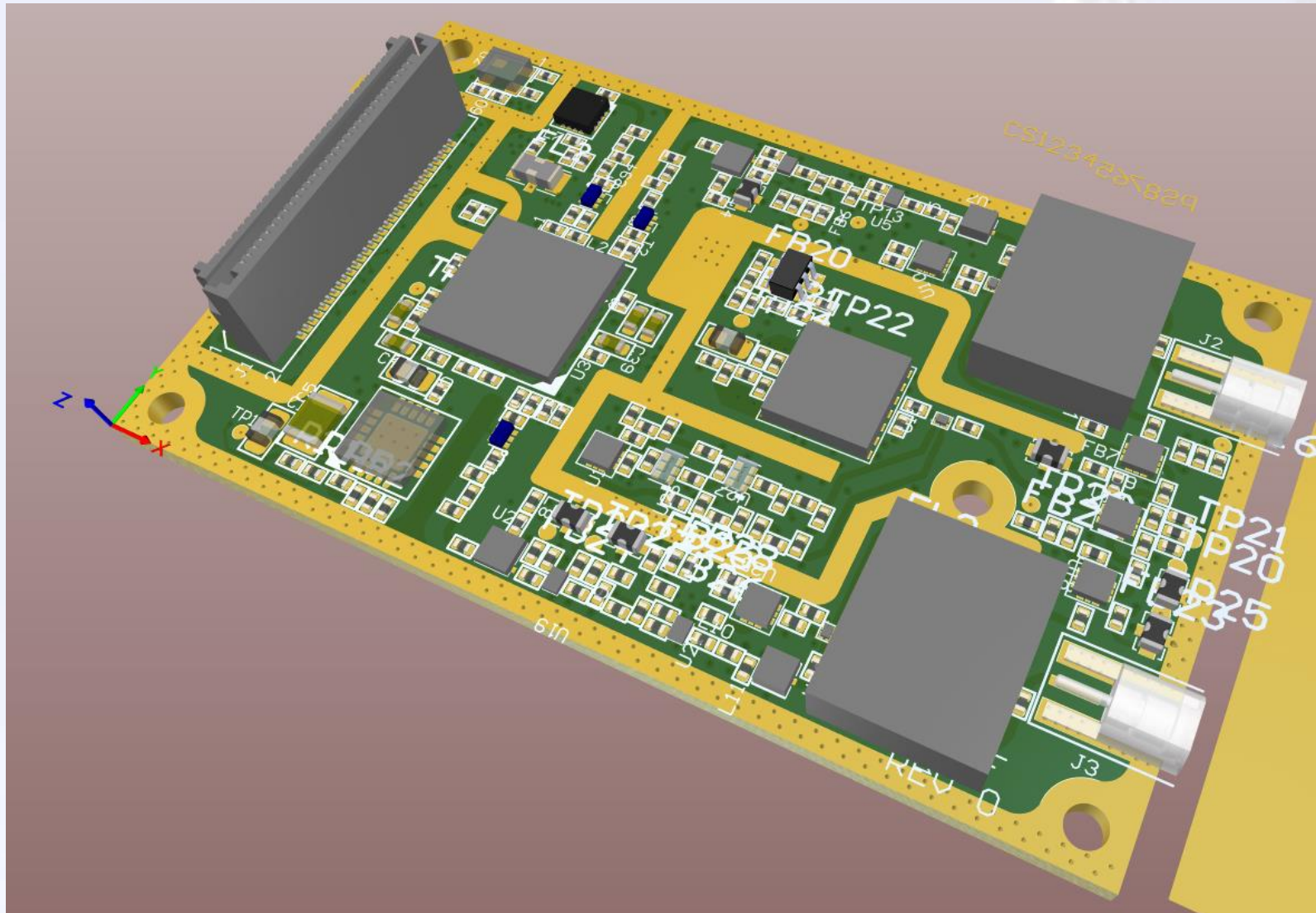
- ✓ Radio hardware design for 4G LTE and beyond
- ✓ Design with Leading Multi-radio SoC RFIC's from:
  - Analog devices (Catalina)
  - Lime Microsystems
  - Broadcom
- ✓ Applications:
  - Cellular infrastructure
  - Small cells.
  - DAS for 4G coverage
  - Tactical interception
  - High capacity links / Backhual





# Baseband to RF diversity FE

## 2.6GHz



# Custom Front-End products



- ✓ TDD/FDD RF FE transceivers
- ✓ High performance SSPA and LNA
- ✓ built-in RF switches
- ✓ Power monitoring functions



# Focus – SSPA Capabilities

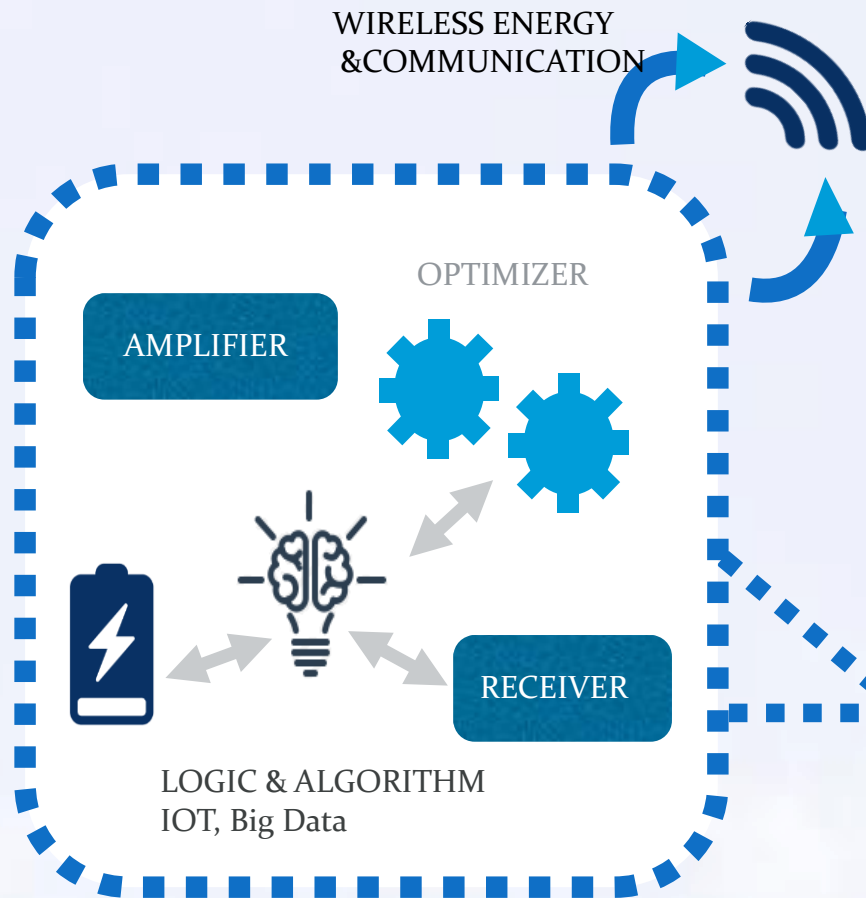
- Available SSPA technologies include GaAs and GaN FET's.
- High Efficiencies with high Bandwidth.
- Linearization Technologies – APD , UBL
- Extensive monitoring capabilities.
- High level of protection.
- Built-in small size Switches for multiple high power ports.
- Reduced size and weight.

# Biomedical designs

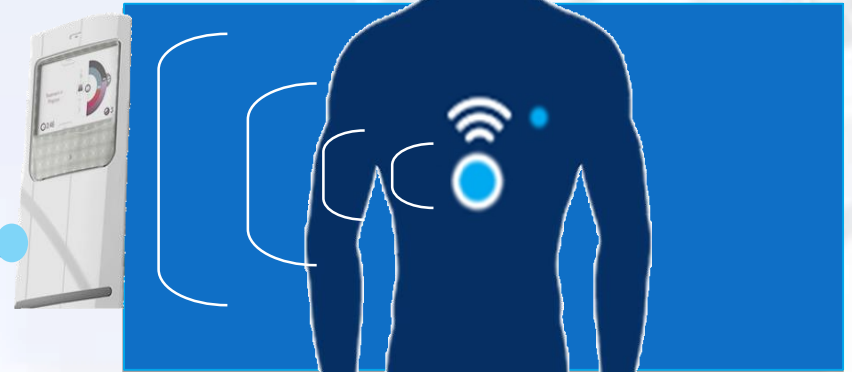


- Wireless energy transfer and communication to electronic implants
- Imaging technologies

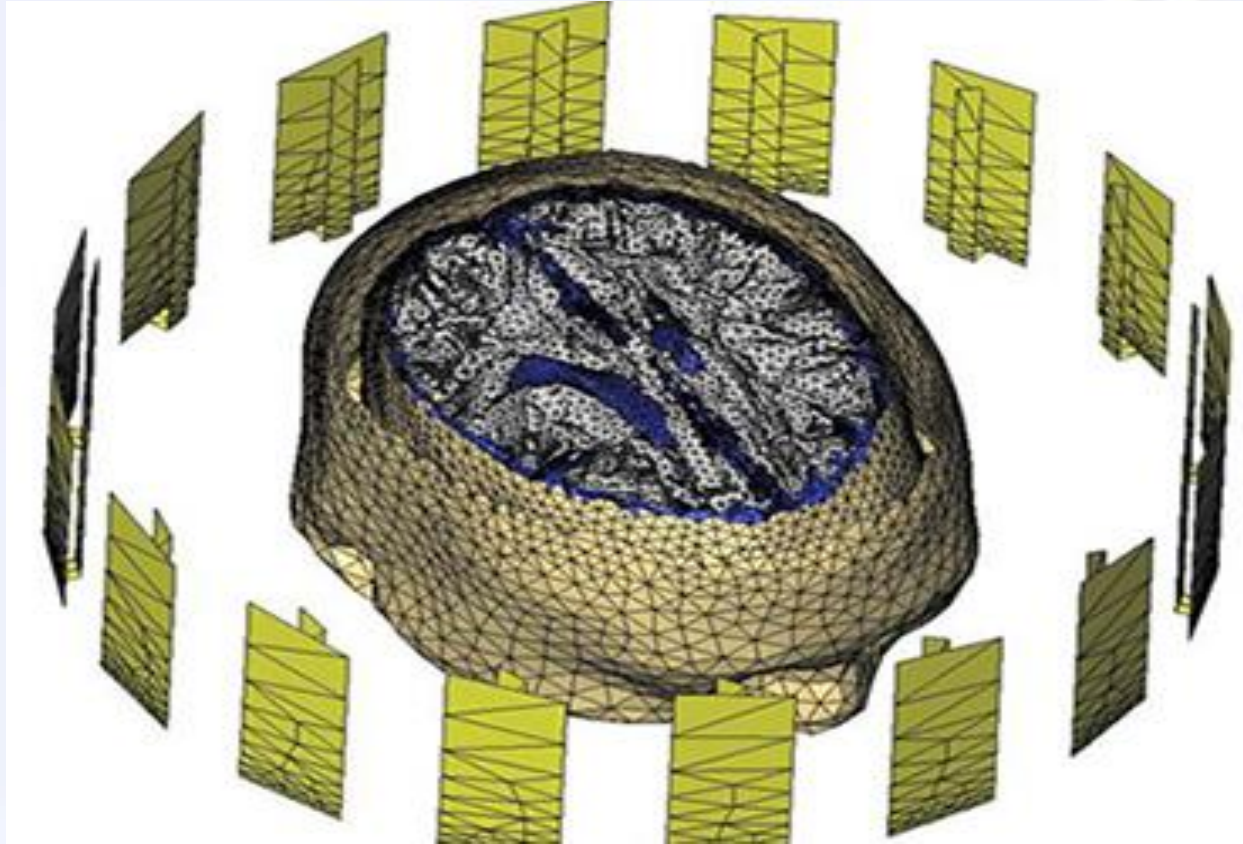
# Wireless energy transfer and communication to electronic implants



- Neuro stimulation
- Sensors
- Artificial organs



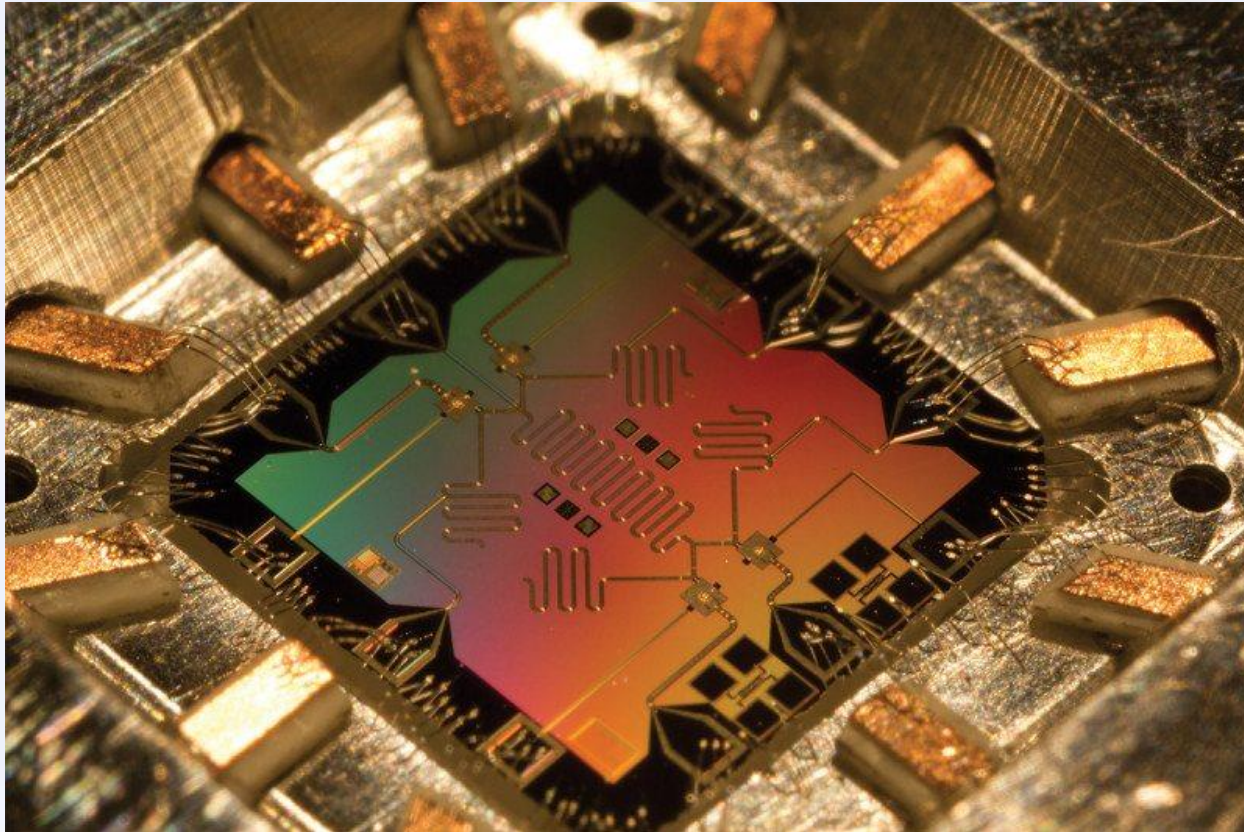
# RF Imaging technologies



- Still underdeveloped with crude results
- Combine RF knowledge and new algorithms
- Machine learning



# RF in Quantum computers



- Reading Qbits, passing information
- Drive the system into action
- Scaling and accuracy challenges

# Your Value

- ✓ **Over-load periods support**
- ✓ **Short TTM**
- ✓ **Efficient R&D process**
- ✓ **SSPA Experts**
- ✓ **Easy on design process**
- ✓ **Low risk source of RF engineering**