



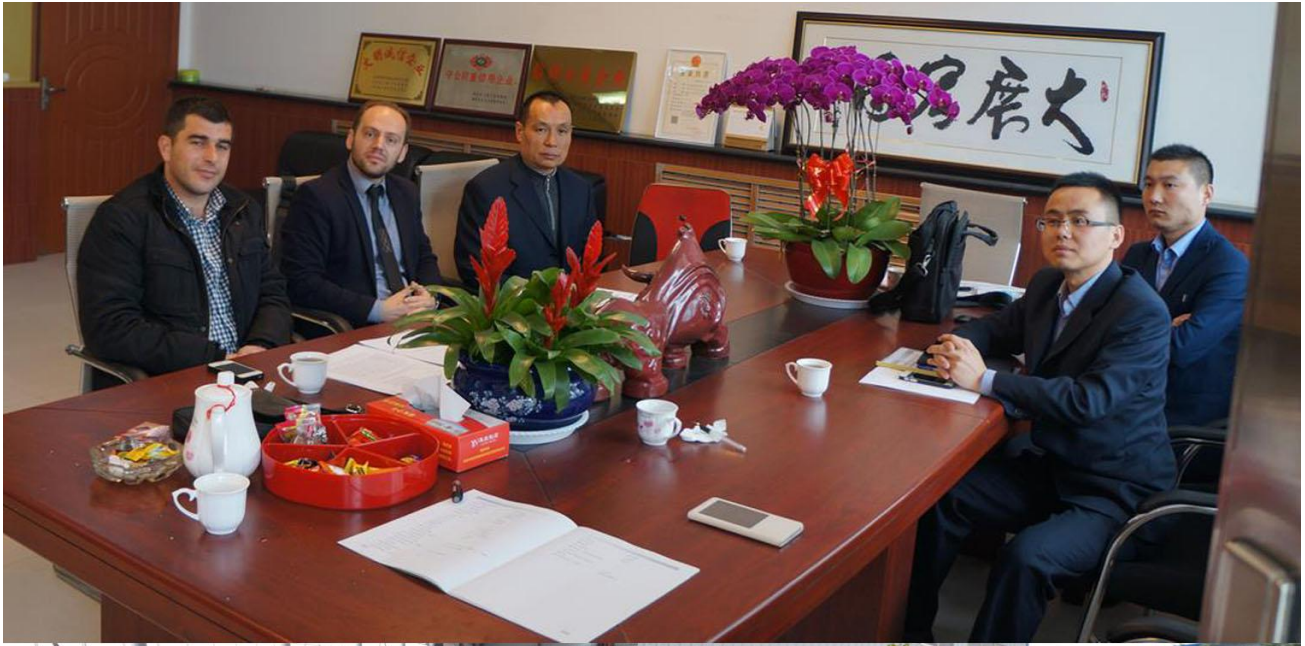
济南富诚液压设备有限公司

Jinan Fucheng Hydraulic Equipment Co., Ltd



Specialist of your Underground Mining Equipment
JINAN, CHINA

中国 · 济南

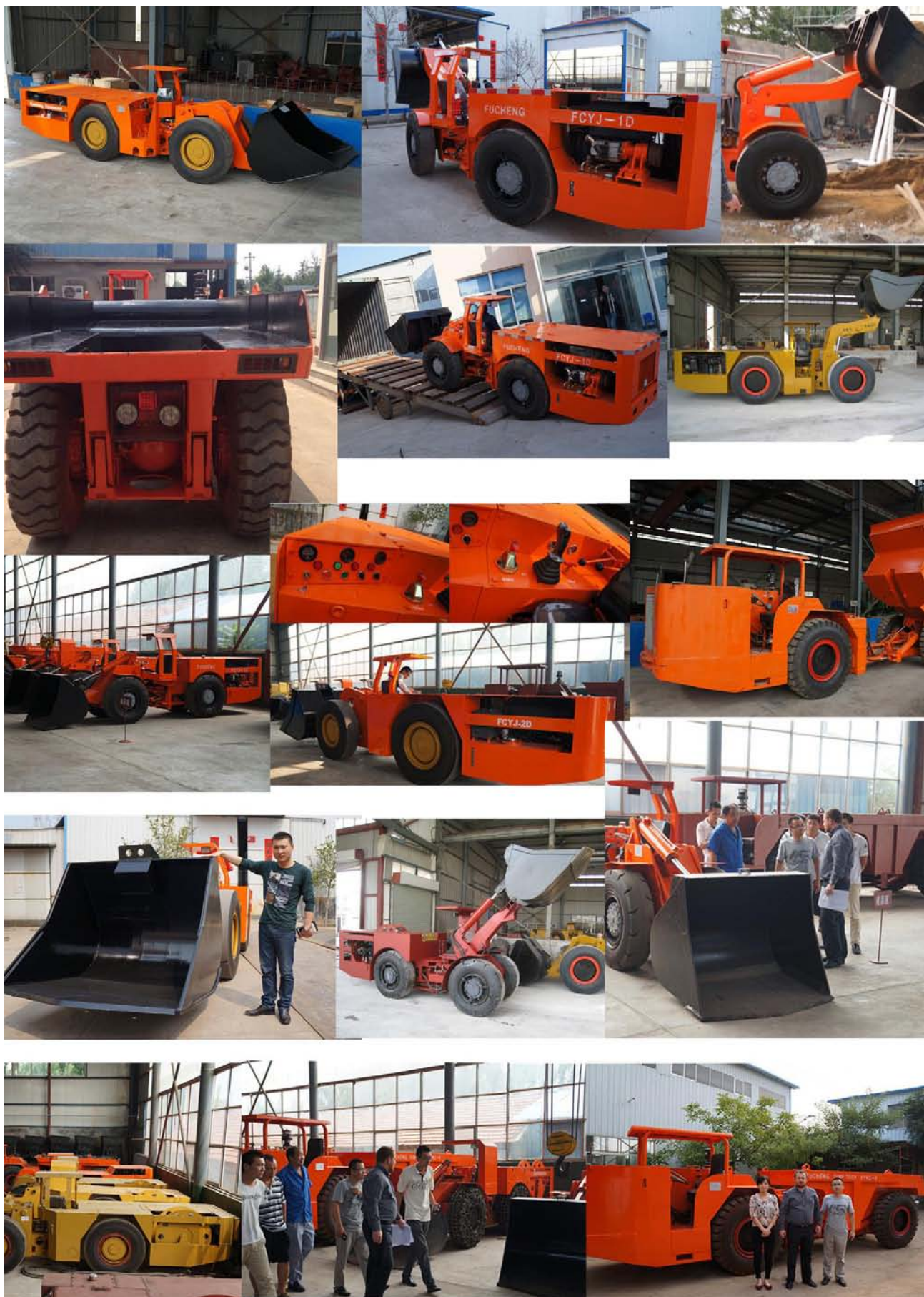


Fucheng Profile



Jinan Fucheng Hydraulic Equipment CO., Ltd is a mining machinery enterprise integrated with researching and designing, manufacturing and marketing domestic and overseas. FUCHENG has subsidiary companies of tunneling jumbos, underground loader (LHDs), trackless equipment and parts production, hydraulic product sales company, the company has obtained Europe **CE certificate & ISO 9001** International Quality Certification and has professional R&D team, advanced productivity and impeccable after-sale service network. FUCHENG key value is "Guarantee quality, Build a harmonious business, mutual development", aiming to establish a sound quality assurance and after-sales service system. We adhere to the new concept of Focus on Market, Drive on Innovation, Survive on Quality and Strengthen on Development for modern enterprise management. FUCHENG will constantly bring first-class underground mining solutions to customers' both at home and abroad.





FCYJ-0.75E Underground Electric LHD

Features:

FCYJ-0.75E Underground Electric LHD adopts Ac 380V three-phase asynchronous motor, rubber tire, front and rear axle drive at the same time. With advantage of compact structure, flexible and convenient operation. Adopts the advanced way of three-point suspension articulated, which changes the old models' layout form of oscillating axle. It has overcome the defects of oscillating axle's high failure rate, maintenance troubles, hidden dangers, greatly reduced the investment of manpower and material resources. Synchronous winding down device of cable was used, making the tractor shovel more flexible during running. Suitable for mining and roadway drivage slag, the construction of the road and work place, material transportation and so on.

Main Technical Parameters

Heaped Bucket Capacity: 0.75m ³	Rated Capacity: 1500kg
Max. Traction: 41 KN	Max. Shovel Force: 39KN
Running Speed: 0-8km/h	Gradeability: 16°
Max .Discharge Height: 850mm	Min. Turning Radius: 2350mm
Max. Rotation Angle: $\pm 36^\circ$	Min. Ground Clearance: 195mm
Rated Power: 37kw	Max. Bucket Height: 3600mm
Effective Cable Length: 100m	Weight(include hydraulic oil): 6.5T
Dimensions: 5800*1250*1900	



FCYJ-0.75D Underground Diesel LHD

Features:

FCYJ-0.75D Underground Diesel LHD adopts German original DEUTZ F4L912W engine with low emissions, low pollution. Original imported main pump and motor guarantee the quality of the Hydraulic system. The scooptram adopts the advanced way of three-point suspension articulated, which changes the old models layout form of oscillating axle. It has overcome the defects of oscillating axle's high failure rate, maintenance troubles, hidden dangers, greatly reduced the investment of manpower and material resources. Suitable for mining and roadway drivage slag, the construction of the road and work place, material transportation and so on.

Main Technical Parameters

Engine: DEUTZ F4L912W(Germany)	
Heaped Bucket Capacity:0.75 m ³	Payload Capacity:1500kg
Max. Traction:41 KN	Max. Shovel Force :39KN
Running Speed:0-8km/h	Gradeability:16°
Max .Discharge Height :850mm	Min. Turning Radius :2350mm
Max. Rotation Angle :± 36°	Min. Ground Clearance :195mm
Rated Power :43kw	Max. Bucket Height:3600mm
Weight(include hydraulic oil):6.5T	Dimensions :5800*1250*1900



FCYJ-1E Underground Electric LHD

Features:

FCYJ-1E Underground Electric LHD adopts Ac 380 V three-phase asynchronous motor, rubber tire, front and rear axle drive at the same time. With advantage of compact structure, flexible and convenient operation. Adopts the advanced way of three-point suspension articulated, which changes the old models' layout form of oscillating axle. It has overcome the defects of oscillating axle's high failure rate, maintenance troubles, hidden dangers, greatly reduced the investment of manpower and material resources. The running system adopts hydrostatic transmission, main pump and motor is originally imported product, which guarantee quality of the hydraulic system. Synchronous winding down device of cable was used, making the tractor shovel more flexible during running. Suitable for mining and roadway drirage slag, the construction of the road and work place, material transportation and so on.

Main Technical Parameters

Heaped Bucket Capacity: 1m ³	Payload Capacity: 2000kg
Max. Traction: 52 KN	Max. Shovel Force : 45KN
Running Speed: 0-8km/h	Gradeability: 16°
Max .Discharge Height : 1085mm	Min. Turning Radius : 2350mm
Max. Rotation Angle : $\pm 36^\circ$	Min. Ground Clearance :195mm
Nominal Power :37kw	Max. Bucket Height:3600mm
Effective Cable Length :100m	Weight(include hydraulic oil):7T
Dimensions :6250*1300*1950	



FCYJ-1D Underground Diesel LHD

Features:

FCYJ-1D Underground Diesel LHD adopts German original DEUTZ BF4L2011 engine, with excellent features of big power. Main pump and motor adopts Ukraine original product, guarantee the quality of the hydraulic system. Pump and motor can also be changed to SAUER products of USA. Adopts the advanced way of three-point suspension articulated, which changes the old models' layout form of oscillating axle. It has overcome the defects of oscillating axle's high failure rate, maintenance troubles, hidden dangers, greatly reduced the investment of manpower and material resources. Suitable for mining and roadway drivage slag, the construction of the road and work place, material transportation and so on.

Main Technical Parameters

Motor: DEUTZ BF4L2011(Germany)	
Heaped Bucket Capacity: 1 m ³	Payload Capacity: 2000kg
Max. Traction: 52KN	Max. Shovel Force : 45KN
Running Speed: 0-8km/h	Gradeability : 16°
Max .Discharge Height : 1085mm	Min. Turning Radius :2350mm
Max. Rotation Angle : $\pm 36^{\circ}$	Min. Ground Clearance :195mm
Rated Power :55.1kw	Max. Bucket Height:3600mm
Weight(include hydraulic oil): 7T	Dimensions :6250 *1300*1950



FCYJ-1.5E Underground electric LHD

Features:

FCYJ-1.5E Underground electric LHD adopt torque converter driving system, three-phase AC motor driving. Gear-box, torque converter, differential mechanism and drive axle are all imported international famous brand. Special design and structure like small size, performing long lifespan, big shovel force, lower cost, convenient in operation and maintenance as well. It has the characteristics of four-wheel drive, full-hydraulic steering, three-point articulated in front and rear car body. Suitable for mining and road way drivage slag, the construction of the road and work place, material transportation and so on.

Main Technical Parameters

Motor Model: Y2-250-4	Motor Power:55KW
Motor Voltage: 380V	Torque Converter: C273.1-295
Transmission System: RT20324-12	Drive Axle: NO-SPIN
Braking System: Working Braking, Parking Brake	Bucket Capacity:1.5 m3
Max. Lifting Height: 3740mm	Min. Ground Clearance:250mm
Total Weight: 11.6T	Gradeability: 16°
Max. Traction:92KN	Max. Shovel Force: 73KN
Hydraulic Tank Capacity:150L	Running Speed: 0-10km/h
Control Voltage: AC36V	Lighting Voltage: AC24V
Steering Angle: $\pm 33^{\circ}$	Min. Turning Radius: 5200mm
Dimensions(Length* Width*Height): 7100 * 1420 * 2050	



FCYJ-1.5D Underground Diesel LHD

Features:

FCYJ-1.5D Diesel scooptram adopts Deutz Engine F6L912, American DANA Torque converter and Transmission, which is of easy operation and smooth running. The braking system adopts hydraulic double pipe working system, and equipped with multi-disk wet braker, self-developed antiskid differential mechanism of NO-SPIN, performs rather well even in bad conditions like harsh, high water saturation environments and muddy tunnel. The main components of the hydraulic system adopts well-known manufacturers' products both at home and abroad, manual operating diverter valve control the steering. Using pilot valve equipped with ergonomics handle to control the bucket arm lifting and bucket tilting. Elaborate designed and manufactured electric scooptram has beautiful shape and high work efficiency. Mainly used for mine, loading and transporting the loose material which is left after bursting. It can also be used for tunnel engineering such as underground railway, highway and water conservancy, especially suitable for working plane of poor work conditions, narrow working platform, low and muddy working face.

Main Technical Parameters

Motor: DEUTZ F6L912W	Torque Converter: C272
Transmission System: RT20326	Drive Axle Type: NO-SPIN
Braking System: Working Braking, Parking Brake	Bucket Capacity: 1.5 m ³
Maximum Lifting Height: 3740mm	Min. Ground Clearance: 250mm
Total Weight: 12T	Gradeability: 16°
Maximum Traction: 100KN	Max. Shovel Force: 80KN
Hydraulic Tank Capacity: 156L	Running Speed: 0-10.1km/h
Steering Angle: $\pm 33^\circ$	Min. Turning Radius: 5200mm
Dimensions (Length * Width * Height): 7300 * 1500 * 2050	



FCYJ-2E Underground Electric LHD

Features:

FCYJ-2E Electric Scooptram is mainly used in underground mining and tunnel, the driving system adopts American DANA Torque converter and gearbox, which is of easy operation and smooth running. The braking system adopts hydraulic double pipe working system, and equipped with multi-disk wet braker, self-developed antiskid differential mechanism of NO-SPIN, performs rather well even in bad conditions like harsh, high water saturation environments and muddy tunnel. The main components of the hydraulic system adopts well-known manufacturers' products both at home and abroad, manual operating diverter valve control the steering. Using pilot valve equipped with ergonomics handle to control the bucket arm lifting and bucket tilting. Elaborate designed and manufactured electric scooptram has beautiful shape and high work efficiency. Mainly used for mine, loading and transporting the loose material which is left after bursting. It can also be used for tunnel engineering such as underground railway, highway and water conservancy, especially suitable for working plane of poor work conditions, narrow working platform, low and muddy working face.

Main Technical Parameters

Motor Model: Y2-250-4	Motor Power: 60KW
Motor Voltage: 380V	Torque Converter: C273.1-295
Transmission System: RT20324-12	Drive Axle Type: NO—SPIN
Braking System: Working Braking, Parking Brake	Bucket Capacity: 2 m ³
Max. Lifting Height: 3740mm	Min. Ground Clearance: 250mm
Total Weight: 12T	Gradeability: 16°
Max. Traction: 100KN	Max. Shovel Force: 80KN
Hydraulic Tank Capacity: 156L	Running Speed: 0-10km/h
Control Voltage: AC36V	Lighting Voltage: AC24V
Steering Angle: $\pm 33^\circ$	Min. Turning Radius: 5200mm
Dimensions (Length* Width*Height): 7300 * 1500 * 2050	



FCYJ-2D Underground Diesel LHD

Features:

FCYJ-2D Underground Diesel scooptram adopts Germany Deutz Engine Deutz F6L912, driving system adopts American DANA Torque converter and gearbox, which is of easy operation and smooth running. The braking system adopts hydraulic double pipe working system, and equipped with multi-disk wet braker, self-developed antiskid differential mechanism of NO-SPIN, performs rather well even in bad conditions like harsh, high water saturation environments and muddy tunnel. The main components of the hydraulic system adopts well-known manufacturers' products both at home and abroad, manual operating diverter valve control the steering. Using pilot valve equipped with ergonomics handle to control the bucket arm lifting and bucket tilting. Elaborate designed and manufactured electric scooptram has beautiful shape and high work efficiency. Mainly used for mine, loading and transporting the loose material which is left after bursting. It can also be used for tunnel engineering such as underground railway, highway and water conservancy, especially suitable for working plane of poor work conditions, narrow working platform, low and muddy working face.

Main Technical Parameters

Motor: DEUTZ F6L912	Torque Converter: C272
Transmission System: RT20326	Drive Axle Type: NO-SPIN
Braking System: Working Braking, Parking Brake	Bucket Capacity: 2 m ³
Maximum Lifting Height: 3740mm	Min. Ground Clearance: 250mm
Total Weight: 12T	Gradeability: 16°
Maximum Traction: 100KN	Max. Shovel Force: 80KN
Hydraulic Tank Capacity: 156L	Running Speed: 0-10km/h
Steering Angle: $\pm 33^\circ$	Min. Turning Radius: 5200mm
Dimensions (Length * Width * Height): 7300 * 1500 * 2050	



FCYJ-3D Underground Diesel LHD

Features:

Adopts America DANA torque converter with hydraulic pump drive and power shift transmission. Working brake adopts the wet multi-disc brake system brake, hydraulically braking and released spring. The parking brake adopts imported braking cylinder, spring braking and hydraulically released, therefore the braking system more reliable. The front drive axle adopts America NO-SPIN differential. The rear drive axle adopts double supports oscillating axle, and decrease the failure rate. The bucket adopts V type structure, and reduces shovel resistance.

Main Technical Parameters

Engine: DEUTZ	Min.Ground Clearance: 315mm
Hydraulic Torque Converter: DANA C270	Leaving Angle: 14°
Transmission Case: DANA R32000	Rear Drive Axle Swing Angle: $\pm 8^\circ$
Drive Axle: NO-SPIN antiskid differential	Discharging Angle: 40°
Dimensions (Transport) Length:8665mm, Width:2174mm, Height:2300mm	Min.Turning Radius: Outer:6265mm Inner:3575mm
Rated Loading Capacity: 6000KGS	Bucket Capacity: 3m ³
Braking System: Hydraulically braking and released spring. The parking brake is spring braking and hydraulically released	Running Speed: First Gear:0-4.7KM/H Second Gear:0-9.4KM/H, Third Gear:0-18.4KM/H
Min.Discharge Distance: 1255mm	Max.Discharge Height: 1515mm
Weight: 17200KG	



FYKC-8 Dump Truck

Features:

The key components of this machine adopt international famous brand product. The engine adopts German DEUTZ BF4M1013 which is inter-cooled booster with characteristics of economic, large power, low noise and low emission. Adopts the ACME purifier produced by War-industry enterprises, reducing the air pollution and improve the underground working environment effectively. Torque converter and transmission adopt American famous brand DANA, to increase the reliability of the whole machine, the structure components are made of high-strength and low-alloy steel plate with high strength and small deformation. Most components of the torque converter, transmission, drive axle and hydraulic pressure system can realize the general use or exchange with the FCYJ-1.5D underground scooptram produced by our company.

Main Technical Parameters

Motor: DEUTZ BF4M1013/115kw	Torque Converter: DANA C273.1-295
Transmission System: RT20324-12	Drive Axle Type: NO-SPIN
Braking System: Working Braking, Parking Brake	Power: 86KW/2300r/min
Bucket Capacity: 4.5m ³ / 8T	Min. Ground Clearance:250mm
Total Weight: 10.5T	Gradeability: 16°
Maximum Traction: 100KN	Running speed: 0-25km/h
Steering Angle: $\pm 38^\circ$	Dimensions: 7120*1820*2300
Min Turning Radius: Inner 4500mm / Outer 6590mm	



FYKC-12 Dump Truck

Features:

The key components of this machine adopt international famous brand product. The engine adopts German DEUTZ BF4M1013 which is inter-cooled booster with characteristics of economic, large power, low noise and low emission. Adopts the ACME purifier produced by War-industry enterprises, reducing the air pollution and improve the underground working environment effectively. Torque converter and transmission adopt American famous brand DANA, to increase the reliability of the whole machine, the structure components are made of high-strength and low-alloy steel plate with high strength and small deformation. Most components of the torque converter, transmission, drive axle and hydraulic pressure system can realize the general use or exchange with the FCYJ series underground scooptram produced by our company.

Main Technical Parameters

Motor: DEUTZ BF4M1013EC/115kw	Torque Converter: C270
Transmission System: R32000	Drive Axle Type: Dp81
Braking System: Braking mode	Power: 115KW/2300r/min
Bucket Capacity: 6m ³ / 12T	Min. Ground Clearance: 250mm
Operating Weight: 13T	Gradeability: 25°
Max. Dumping angle: 65°	Running speed: 0-24.9km/h
Front axle oscillating Angle: ±7°	Dimensions: 7366*1900*2300
Min Turning Radius: Inner 4550mm / Outer 7000mm	
Max. Disassembly dimension and weight: 3801*1900*1390mm / 7T	



FYKC-15 Dump Truck

Features:

The key components of this machine adopt international famous brand product. The engine adopts Germany DEUTZ BF6M1013EC which is inter-cooled booster with characteristics of economic, large power, low noise and low emission. Adopts the ACME purifier produced by War-industry enterprises, reducing the air pollution and improve the underground working environment effectively. Torque converter and transmission adopt American famous brand DANA, to increase the reliability of the whole machine, the structure components are made of high-strength and low-alloy steel plate with high strength and small deformation. Most components of the torque converter, transmission, drive axle and hydraulic pressure system can realize the general use or exchange with the FCYJ series underground scooptram produced by our company.

Main Technical Parameters

Bucket capacity	7.5m ³	Tilting time	15s
Rated weight	15 tons	Dropping time	10s
Running speed	0-29.1 (km/h)	Tire specification	14.00×24 (20 layers)
Gradeability	14°	Steering cylinder(2 pcs)	Φ 100/Φ 55-460
Max dumping angle	65°	Lifting cylinder(2pcs)	Φ 125/Φ 90-1500
Min turing radius	Outer 7600mm Inner 4600mm	Total weight	15.4t
Min. ground clearance	280mm	Steering angle	±42.5°
Dimension:	8350*2150*2450mm		



FYKC-20 Dump Truck

Features:

Hydraulic system: Containing working system, steering system, braking system, converter and transmission low voltage system. Working and steering pump are use the PERMCO from USA, the steering valve are use the ARGO HYTOS from Germany or Parker Hannifin from USA.

Main Technical Parameters

Diesel engine:	Deutz AG BF6M1013FC 212kw/2300rpm Dry air filter	
Hydraulic convertor:	DANA Corp C5000 Series	
Hydraulic transmission:	DANA Corp R36421	
Drive axle:	DANA Corp 19D2748 Forced cooling	
Parking brake:	Mico USA, Spring brake, Hydraulic release	
Bucket volume:11m ³	Rated load: 20t	
Speed (km/h) : 0~30	Max. gradeability: 14°	
Min. turning radius: outer 7500mm/ inner 4200mm	Max. steering Angle: ±42°	
Min. ground clearance: ≥350mm	Max. Angle of unloading: 65°	
Length:9200mm, Width: 2396mm, High :2450	Weight: 20t	



Tunneling Jumbos



Model list of Jumbos

Model	Boom	Chassis	Power	Tunnel section	Dimensions
FC10-1BC	1	Crawler	Diesel engine	2×2 - 3.5×3.5m	7.8×9.9×2.26m
FC10-1BCD	1	Crawler	Diesel engine + Electric motor	2×2 - 3.5×3.5m	7.85×9.2×1.75m
FC10-1BCDL	1	Wheel	Diesel engine + Electric motor	2×2 - 3.5×3.5m	8.3×1.35×2.65m
FC10-1BDG	1	Rail	Electric motor	2×2 - 3.5×3.5m	7.5×9.2×2.023m
FC20-1BCDL	1	Wheel	Diesel engine + Electric motor	3.5×3.5 - 4.5×5.1m	12.5×1.65×2.2m
FC20-2BCD	2	Crawler	Diesel engine + Electric motor	2.5×2.5 - 4.5×5.5m	8.24×1.29×2.45m
FC30-2BCD	2	Crawler	Diesel engine + Electric motor	3.5×4 - 6.5×8m	11.5×1.7×2.8m
FC30-1BCDL	1	Wheel	Diesel engine + Electric motor	3.5×3.5 - 7.5×8m	11.2×1.65×2.8m
FC100-3BCDL	3	Wheel	Diesel engine + Electric motor	7.5×6.5 - 11×13m	14.5×2.5×3.4m

Marks: FUCHENG supply tailor-made models for customers.

Scaling Jumbo - Model: FC62



Model: FC62

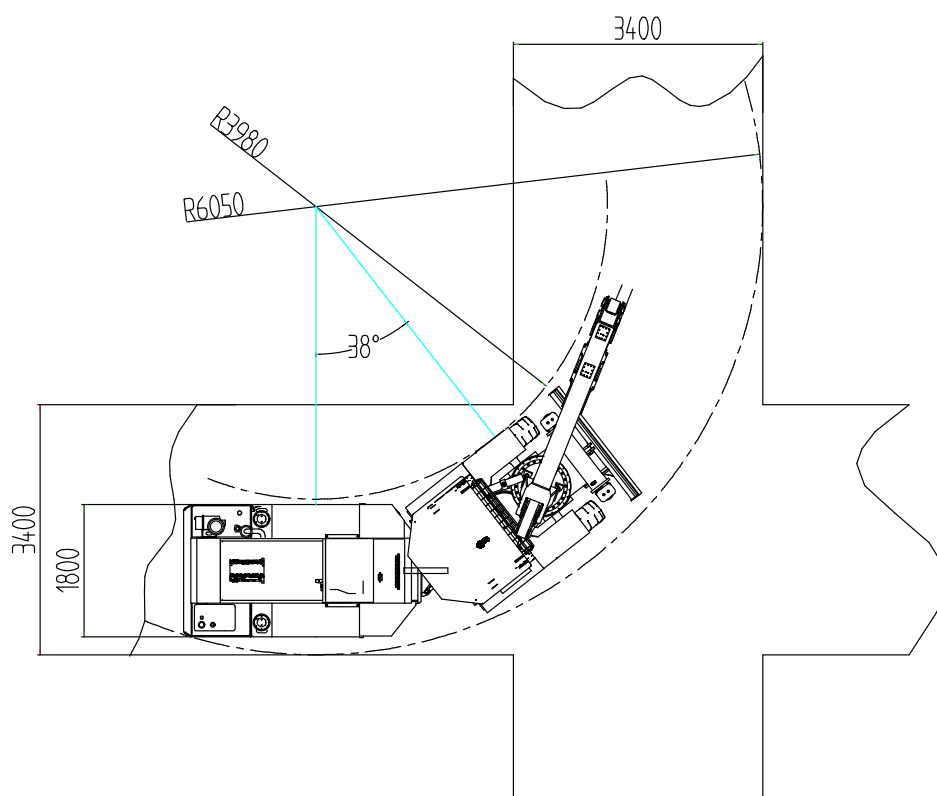
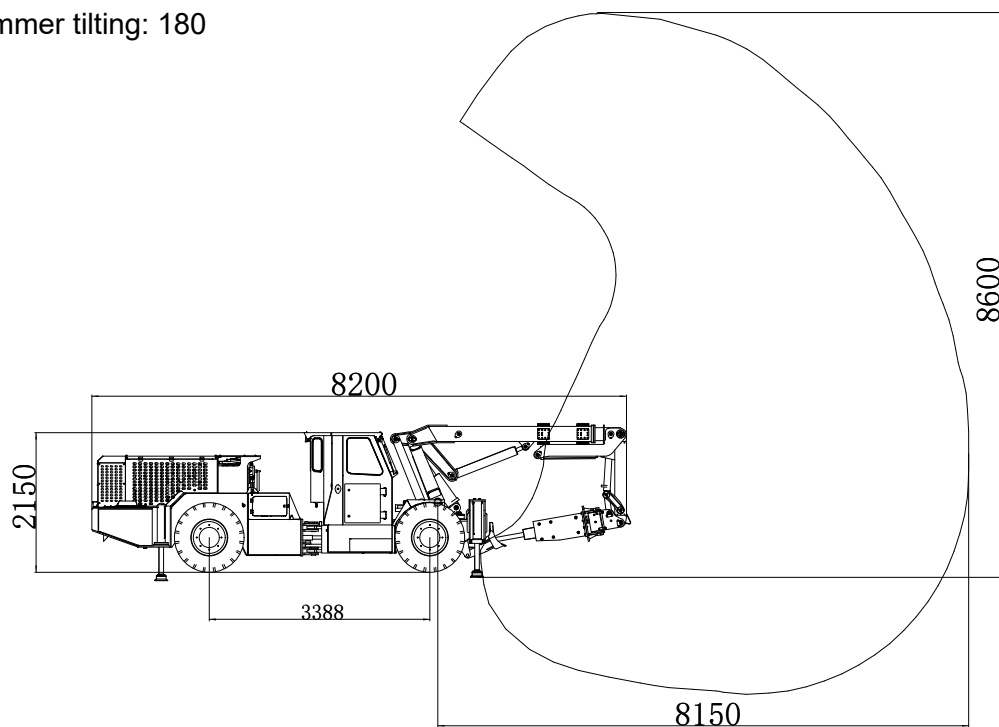
Overall size (L×W×H): 8204*1450*2819mm

Max. scaling height: 8100mm

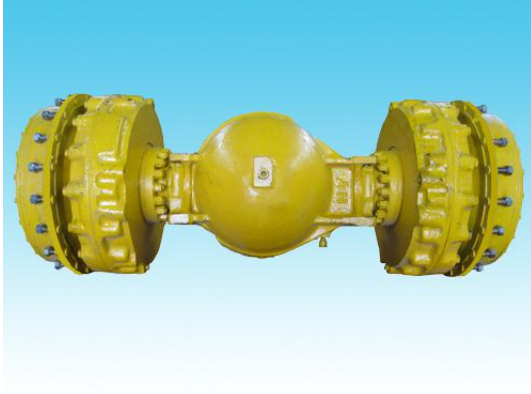
Max. extension length: 7285+1000mm

Hammer swinging: 180

Hammer tilting: 180



Spare parts



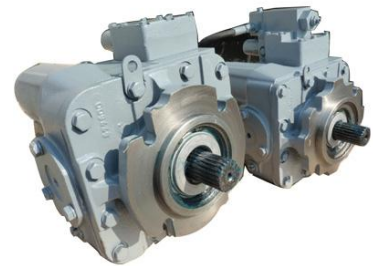
Driving Bridge



Main Driving



Hydraulic Pump



Hydraulic Motor

Certificate of Compliance



No. 1N150413.JFHUQ01
Technical Construction File no. UF15040030

Certificate's
Holder:

Jinan Fucheng Hydraulic Equipment
Co., Ltd.
No. 3, North Gaojia village, Huashan Road, Licheng
District, Jinan City, Shandong Province, China.

Certification ECM
Mark:



Product:
Model(s):

Underground Loader
FCYJ-0.75D, FCYJ-0.75E, FCYJ-1D, FCYJ-1E,
FCYJ-1.5E, FCYJ-2D, FCYJ-2E, FCYJ-3D,
FCYJ-4D, FCYJ-6D

Verification to:

Standard:
EN ISO 12100:2010,
EN 474-1:2006+A4:2013/AC:2014,
EN 474-7:2006+A1:2009

related to CE Directive(s):
2006/42/EC (Machinery)

Remark: The product(s) has been verified on a voluntary basis. The product(s) satisfies the requirements of the Certification Mark of ECM, in reference to the above listed Standard(s). The above Certification Mark can be affixed on the product(s) accordingly to the ECM regulation about its release and its use. Regulation can be found at www.entecerma.it.
Whereas the Manufacturer is responsible of the CE certification of the product(s) and not exempted to perform all the necessary activities before placing the product(s) on the market.
The Manufacturer is also responsible to maintain efficient the internal production control to ensure the product(s) are in compliance with the Certification ECM Mark.
This certificate can be checked for validity at www.entecerma.it

Date of issue 13 April 2015

Expiry date 12 April 2020

Chief Manager
Tim Mahan

Deputy Manager
Vivia Miller

Ente Certificazione Macchine Srl

Via Calabritto, 243 - Loc. Castello di Serravalle - 40053 Valsamoggia (BO) - ITALY

☎ +39 051 6705141 ☎ +39 051 6705156 ✉ info@entecerma.it 🌐 www.entecerma.it

Welcome to Fucheng !



Contact:

Jinan Fucheng Hydraulic Equipment CO., Ltd

ADD: B1402 Jiaheng Building, No.1825 Hualong Road, Licheng District, Jinan City,
Shandong Province, China 250100

TELE: 0086-531-83530679

FAX: 0086-531-85760751

Email: fucheng3@fuchenghyd.com

Web: www.fuchengjx.com

Alibaba Link: <http://fuchenghyd.en.alibaba.com/>