



DESDE 1962

PRESENTATION







# MEET MENNO

Founded in 1962 in the city of Erechim, Rio Grande do Sul, Brazil, by the entrepreneur Menno Reuwsaat, Menno began its activity producing accounting equipment adapted to typewriters. Over time, the company expanded its product line and extended its area of operation nationwide.

As a pioneer throughout Brazil, the automation line met the demand of large multinational manufacturers with parts adapted to the needs of each client, such as dot matrix printing mechanisms and quality services.

Currently, the company maintains its roots, constantly serving large corporations through custom-designed projects to meet any need. Additionally, Menno has established itself as a benchmark in office equipment and supplies.



# | BINDERS & RING BINDERS



CODES		EQUIPMENT	LOT MORE THAN 10 UNITS	LOT UP TO 10 UNITS
CODE	MATRIX ID	Electric Binder	Price (US\$)	Price (US\$)
2782	2262	Electric Desktop Binding Machine (127V or 220V)	\$449,08	\$486,94
CODE	MATRIX ID	A/4 Binder	Price (US\$)	Price (US\$)
13530	4411	A/4 Binding Machine - 54 Holes - 10 Sheets	\$58,15	\$63,05
13530	4415	A/4 Binding Machine - 54 Holes - 15 Sheets	\$58,28	\$63,19
13530	4091	A/4 Binding Machine - 54 Holes - 20 Sheets	\$58,11	\$63,01
CODE	MATRIX ID	Wire-O Punch	Price (US\$)	Price (US\$)
23456	16651	Combined Wire-O Punch 2x1 with Hole Eliminator - White	\$124,00	\$133,00



# | BINDERS

The A4 Binding Device is available in three variants, all with 3 punching positions and the ability to make 54 punches per sheet. Depending on the model, they can manually punch between 10 and 20 sheets at a time. These devices are ideal for handling different binding volumes, offering precision and efficiency in each use.

Garbage can capacity:	0.17 L
Punch diameter:	4 mm
Dimensions (mm):	390 (W) x 350 (D) x 115 (H)
Space between punches:	2 mm
Material:	Steel and plastic
Step:	6 mm
Perforate:	up to 33 cm
Gross weight:	6.8 Kg
Net weight:	6 Kg
Punch position:	3 positions in 54 holes

10 sheets



15 sheets



20 sheets





# Wire-O Binder



Activation:	Manual
Maximum perforation capacity:	15 sheets (75 g/m <sup>2</sup> )
Available color:	Black base and white fairing
Product dimensions (mm):	140 (W) x 500 (D) x 380 (H)
Packaging dimensions (mm):	160 (W) x 560 (D) x 430 (H)
Material:	High-strength carbon steel
Gross weight:	10.2 Kg
Other features:	Rubber backing for extra grip



# ELECTRIC PAPER PUNCH

The Electric Binding Device features **3** punching positions, with the capacity to punch up to **25** sheets at a time automatically and make **60** holes per sheet. It is ideal for handling large binding volumes.



Activation:	Electronic with reverse
Garbage can capacity:	0.5 L
Maximum perforation capacity:	25 sheets (75g/m <sup>2</sup> )
Available color:	White
Punch diameter:	4 mm
Space between punches:	2 mm
Step:	6 mm
Perforate:	Up to 33 cm
Punch position:	3 positions in 60 holes
Dimensions (mm):	440 (W) x 370 (D) x 215 (H)
Material:	Steel, Aluminum, Plastic
Gross weight:	29 Kg
Net weight:	22 Kg
Noise:	65 dB (A)
Other features:	Rubber backing for extra grip



# DOCUMENT SHREDDERS

CODES		EQUIPMENT	LOT MORE THAN 10 UNITS	LOT UP TO 10 UNITS
CODE	MATRIX ID	Paper and Document Shredders (127V or 220V)	Price (US\$)	Price (US\$)
9017	2549	Destroyer 400 - Strips - 220 V	\$3.566,85	\$3.867,59
9017	2829	Destroyer 400 - Strips - 380 V	\$3.566,85	\$3.867,59
13236	3909	Destroyer 400 - Particles - 220 V	\$4.573,30	\$4.958,90
13236	3910	Destroyer 400 - Particles - 380 V	\$4.573,30	\$4.958,90
14572	6032	Destroyer 270 BR - Strips - W/O CD BIN	\$622,92	\$675,45
14572	6034	Destroyer 270 BR - Particles - W/O CD BIN	\$706,86	\$766,46
14572	5872	Destroyer 270 BR - Strips - W/ CD BIN	\$687,77	\$745,76
14572	5772	Destroyer 270 BR - Particles - W/ CD BIN	\$771,71	\$836,78
14620	6036	Destroyer 320 BR - Strips - W/O CD BIN	\$927,71	\$1.005,94
14620	6038	Destroyer 320 BR - Particles - W/O CD BIN	\$1.172,14	\$1.270,97
14620	5852	Destroyer 320 BR - Strips - W/ CD BIN	\$984,10	\$1.067,07
14620	5111	Destroyer 320 BR - Particles - W/ CD BIN	\$1.228,52	\$1.332,11
351	1145	Destroyer 350 - Strips	\$1.547,05	\$1.677,49
351	1147	Destroyer 350 - Particles	\$1.559,99	\$1.691,53
15213	5032	Destroyer 240 BR - Particles - 35 Liters - W/O CD BIN	\$585,77	\$635,16
15213	5011	Destroyer 240 BR - Particles - 35 Liters W/ CD BIN	\$599,60	\$650,15
15213	5294	Destroyer 240 BR - Particles - 55 Liters - W/O CD BIN	\$594,44	\$644,57
15213	5552	Destroyer 240 BR - Particles - 55 Liters - W/ CD BIN	\$604,77	\$655,76
15213	5692	Destroyer 240 BR - Strips - 35 Liters	\$548,56	\$594,81
15213	6212	Destroyer 240 BR - Strips - 55 Liters	\$557,24	\$604,22
20377	8792	Destroyer 250 BR - Particles - 40 Liters (DUAL VOLTAGE)	\$756,56	\$820,35
20377	8794	Destroyer 250 BR - Strips - 40 Liters (DUAL VOLTAGE)	\$707,20	\$766,83
20377	8815	Destroyer 250 BR - Particles - 60 Liters (DUAL VOLTAGE)	\$766,07	\$830,66
20377	8813	Destroyer 250 BR - Strips - 60 Liters (DUAL VOLTAGE)	\$716,71	\$777,15
20377	8816	Destroyer 250 BR - Particles - 80 Liters (DUAL VOLTAGE)	\$777,69	\$843,26
20377	8814	Destroyer 250 BR - Strips - 80 Liters (DUAL VOLTAGE)	\$728,33	\$789,74





# LAUNCH: Destroyer 230 P

Made of carbon steel with microtextured black powder electrostatic paint, this paper shredder offers durability and an elegant design. It can shred DVDs, credit cards, paper clips, and staples with ease. The cutting blade set is made of steel, ensuring optimal performance and a long lifespan. Additionally, it has an external capsule fuse for overload protection that is easy to maintain.



- Steel door and bin with plastic handles

Basket capacity	35 L
LEDs	Individual indicators on the panel
Buttons	Anti-vandalism, power on/off, reverse mode
Security level	P4
Capacity	20 sheets (A4 75g)
Maximum speed	3 m/min
Dual voltage	Yes
Noise level	58 dB
Dimensions (WDH)	432 x 330 x 635 mm
Internal lighting	Yes
Paper presence sensor	Yes
Basket presence sensor	Yes
Full basket sensor	Yes
Open door sensor	Yes
Automatic reverse	Yes
Wheels	4
Net weight	30 Kg
Operating time	Continuous use
Shredding type	Particles (3.9 x 40 mm)
Shredding speed	300 cm/min
Power cord length	1,20 m

Target Audience
Companies with medium or high shredding demand
Government agencies and public institutions
Universities
Banks
Industries
Corporations
Hospitals

Price: US\$ 500



# | DOCUMENT SHREDDERS – Series 240

If you are looking for efficiency and security in managing business documents, the ***Destroyer Menno Series 240 Shredder*** is the ideal choice. It is a 100% Brazilian product, developed with advanced technology and entirely made of steel. This series offers excellent value for money for the corporate environment. Whether to protect your company's sensitive information or ensure compliance with data privacy regulations, the Destroyer Menno Series 240 Shredder is the reliable choice for effective document management.

## Main Features:

**Shredding Technology:** Available in particle shredding models (P4) or strip shredding models (P2), the Series 240 meets your company's specific needs. Both options come with a maximum capacity bin of 35 liters or 55 liters, and there is also the option of a dedicated bin for CD/DVD/Card disposal.

**Automatic Activation with Paper Presence Sensor:** The shredding process is simplified with automatic activation that detects the presence of paper, streamlining the work and ensuring operational efficiency.

**Compact Dimensions:** With dimensions of 400mm (Width) x 320mm (Depth) x 660mm (Height), the Destroyer Menno Series 240 Shredder is compact and can be easily integrated into the work environment, occupying little space.

**Moderate Noise Level:** With a noise level of 60 dB (A), this series provides a quieter work environment without compromising productivity.

**High Shredding Capacity:** With the capacity to shred up to 21 sheets (A4 or Letter size, 75g) into particles or 30 sheets (A4 or Letter size, 75g) into strips, the Series 240 offers robust performance, efficiently handling large volumes of documents.

**Durability and Safety:** Equipped with metal gears and chains, the Destroyer Menno Series 240 Shredder ensures durability and resistance, even in intensive use environments. Additionally, it has a safety sensor, providing peace of mind during use.



# DOCUMENT SHREDDERS – Series 240 P

240 BR · 35L



240 BR · 55L



Insertion opening for paper	240 mm
Opening for CD/DVD and PVC cards	120 mm
Activation	Automatic with paper presence sensor
Average shredding capacity	70 kg/h
Available color	Black
Shreds staples and paper clips	Yes
LED indication	Blue - On / Red - Heated, excess paper and garbage can open
Noise level	60 dB (A)
Maximum number of sheets (75g)	21 sheets A4 or Legal
Gears and chainrings	Metallic
Power	550 W
Reversal	Automatic and push-button
Garbage can full sensor	Yes
Paper presence sensor	Yes
Safety sensor	Yes
Garbage can safety sensor	Yes
Operating time	Continuous
Type of shredding	3.9 x 40 mm particles
Shredding speed	4.1 m/min

Code	Description	Dimensions (mm)	Gross weight	Net weight
15213-5032	240 P - Without Basket for CD/DVD/Cards - 35L	400 (W) x 320 (D) x 660 (H)	42,3 Kg	37,1 Kg
15213-5011	240 P - With Basket for CD/DVD/Cards - 35L	400 (W) x 320 (D) x 660 (H)	42,3 Kg	37,1 Kg
15213-5294	240 P - Without Basket for CD/DVD/Cards - 55L	400 (W) x 320 (D) x 860 (H)	46 Kg	41,5 Kg
15213-5552	240 P - With Basket for CD/DVD/Cards - 55L	400 (W) x 320 (D) x 860 (H)	46 Kg	41,5 Kg



# DOCUMENT SHREDDERS – Series 240 T

240 BR · 35L



240 BR · 55L



Insertion opening for paper	240 mm
Opening for CD/DVD and PVC cards	No
Activation	Push-button and automatic by electronic sensor
Average shredding capacity	113 kg/h
Available color	Black
Gears and chains	Metallic
LED indication	Blue - On / Red - Heated, excess paper and garbage can open
Noise level	60 dB (A)
Security level	P2
Maximum number of sheets (75g)	30 sheets A4 or Legal
Gears and chainrings	Metallic
Power	550 W - CE certified WEG motor
Reversal	Automatic and push-button
Garbage can full sensor	Yes
Paper presence sensor	Yes
Safety sensor	Yes
Garbage can safety sensor	Yes
Type of shredding	6 mm strips
Operating time	Continuous
Shredding speed	4 m/min

Code	Description	Dimensions (mm)	Gross weight	Net weight
15213-5692	240 T - 35L	400 (W) x 320 (D) x 660 (H)	42,3 Kg	37,1 Kg
15213-6212	240 T - 55L	400 (W) x 320 (D) x 860 (H)	46,5 Kg	45 Kg



# | DOCUMENT SHREDDERS – Series 250

In the information age, data protection is essential for companies and organizations in compliance with the LGPD (General Data Protection Law). We present the **Menno Destroyer 250 Shredder**, a symbol of technology and innovation designed to meet the daily demands of shredding with efficiency and reliability.

## Main Features:

Protecting confidential information is a priority for companies in compliance with the LGPD. We present the Menno Destroyer 250 Shredder, a robust and efficient solution for your shredding needs. Built with durable steel, this shredder offers options of 40L, 60L, and 80L bin capacity, ensuring versatility for any work environment.

With the option of particle shredding (P4) or strip shredding (P2), you can choose the level of security according to your needs. Equipped with automatic activation by paper presence sensor, the Destroyer 250 provides convenience and efficiency, activating automatically when needed.

Its compact design, along with rollers, allows for easy movement and integration into the work environment. Additionally, with quiet operation (less than 60 dB A) and a safety sensor, it ensures a quiet and safe work environment. Capable of shredding up to 25 sheets in the particle model and 35 sheets in the strip model (A4 or Letter size 75g/m<sup>2</sup>) at once, this shredder offers high performance in continuous operation time.

**Built with metal gears and chains, the Menno Destroyer 250 Shredder guarantees long-term durability and reliability. Invest in the security of your data and choose the Menno Destroyer Shredder for your office.**



# DOCUMENT SHREDDERS – Series 250 P



Insertion opening for paper	250 mm
Opening for CD/DVD and PVC cards	125 mm
Activation	Automatic with paper presence sensor
Average shredding capacity	94 kg/h
Available color	Black
Shreds staples and clips	Yes
LED indication	Blue - On / Red - Heated, excess paper and garbage can open
Noise level	60 dB (A)
Maximum number of sheets	25 sheets A4 or Legal 75g/m <sup>2</sup>
Gears and chainrings	Metallic
Power	880 W
Reversal	Automatic and manual
Garbage can full sensor	Yes
Paper presence sensor	Yes
Safety sensor	Yes
Garbage can safety sensor	Yes
Operating time	Continuous
Type of shredding	3.9 x 40 mm particles
Shredding speed	4 m/min
Garbage can volume	40, 60, and 80 liters

Code	Description	Dimensions (mm)	Gross weight	Net weight
20377 - 8792	250 P - 40 liters	440 (W) x 350 (D) x 624 (H)	44.2 kg	39.2 kg
20377 - 8815	250 P - 60 liters	440 (W) x 350 (D) x 775 (H)	46.8 kg	41.8 kg
20377 - 8816	250 P - 80 liters	440 (W) x 350 (D) x 926 (H)	49.4 kg	44.4 kg



# DOCUMENT SHREDDERS – Series 250 T



Insertion opening for paper	250 mm
Opening for CD/DVD and PVC cards	125 mm
Activation	Automatic with paper presence sensor
Average shredding capacity	132 kg/h
Available color	Black
Shreds staples and clips	Yes
LED indication	Blue - On / Red - Heated, excess paper and garbage can open
Noise level	< 60 dB (A)
Maximum number of sheets	35 sheets A4 or Legal 75g/m <sup>2</sup>
Gears and chainrings	Metallic
Power	880 W
Reversal	Automatic and manual
Garbage can full sensor	Yes
Paper presence sensor	Yes
Safety sensor	Yes
Garbage can safety sensor	Yes
Operating time	Continuous
Type of shredding	6 mm strips
Shredding speed	4 m/min
Garbage can volume	40, 60, and 80 liters

Code	Description	Dimensions (mm)	Gross Weight	Net Weight
20377 - 8794	250 T - 40 liters	440 (W) x 350 (D) x 624 (H)	44.2 kg	39.2 kg
20377 - 8813	250 T - 60 liters	440 (W) x 350 (D) x 775 (H)	46.8 kg	41.8 kg
20377 - 8814	250 T - 80 liters	440 (W) x 350 (D) x 926 (H)	49.4 kg	44.4 kg



# | DOCUMENT SHREDDERS – Series 270

The ***Menno Destroyer 270 Shredder*** sets a new standard of excellence in the paper shredder market. With an unmatched combination of durability and continuous shredding capacity, this machine is truly exceptional. Additionally, it features a 72-liter bin and offers an option of a separate bin for CD/DVD/Card shredding, ensuring total versatility.

## **Outstanding Features:**

The Menno Destroyer 270 Shredder offers elite performance, ensuring maximum protection for your confidential documents. With the ability to shred into particles (security level P4) or strips (security level P2), this machine offers unparalleled versatility. Its smart activation, either by button or automatically through an electronic sensor, provides unmatched ease of use and efficiency.

Manufactured with metal gears and chains, this shredder has a robust construction, ensuring exceptional durability even in intensive use. Safety is a priority, with an integrated sensor providing peace of mind for users during operation.

Additionally, its quiet operation, with a noise level of only 60 dB (A), provides a quiet and uninterrupted work environment. Its ergonomic design, with compact dimensions and wheels, facilitates movement within the work environment, perfectly adapting to your needs.

Capable of shredding up to 25 sheets in the particle model and 35 sheets in the strip model (A4 or Letter size 75g/m<sup>2</sup>) at once, this machine offers maximum efficiency for your work routine. Designed for continuous operation, the Menno Destroyer 270 Shredder meets the most demanding needs of your office.

**The Menno Destroyer 270 Shredder is not just a tool; it is a complete solution for your document shredding needs. It is the ideal choice for efficiency and reliability.**



# DOCUMENT SHREDDERS – Series 270 BR P



Insertion opening for paper	270 mm
Opening for CD/DVD and PVC cards	125 mm - optional
Activation	Push-button and automatic by electronic sensor
Average shredding capacity	70 kg/h
Available color	Black with stainless steel detail
Shreds staples and clips	Yes
LED indication	Green - Ready / Red - Bin full
Noise level	60 dB (A)
Maximum number of sheets	25 sheets A4 or Legal (75 g/m <sup>2</sup> )
Gears and chainrings	Metallic
Power	680 W
Reversal	Automatic and push-button
Garbage can full sensor	Yes
Paper presence sensor	Yes
Safety sensor	Yes
Garbage can safety sensor	Yes
Operating time	Continuous
Type of shredding	4 x 40 mm particles
Shredding speed	3.8 m/min
Garbage can volume	72 liters, with or without CD/DVD/Card garbage can

Code	Description
14572 - 6034	No garbage can for CD/DVD/Card
14572 - 5772	With CD/DVD/Card garbage can - exclusive opening



# DOCUMENT SHREDDERS – Series 270 BR T



Insertion opening for paper	270 mm
Opening for CD/DVD and PVC cards	125 mm - optional
Activation	Push-button and automatic by electronic sensor
Average shredding capacity	130 kg/h
Available color	Black with stainless steel detail
Shreds staples and clips	Yes
LED indication	Green - Ready / Red - Bin full
Noise level	60 dB (A)
Maximum number of sheets	35 sheets A4 or Legal (75 g/m <sup>2</sup> )
Gears and chainrings	Metallic
Power	680 W
Reversal	Automatic and push-button
Garbage can full sensor	Yes
Paper presence sensor	Yes
Safety sensor	Yes
Garbage can safety sensor	Yes
Operating time	Continuous
Type of shredding	6 mm strips
Shredding speed	4 m/min
Garbage can volume	72 liters, with or without CD/DVD/Card garbage can

Code	Description
14572 - 6032	No garbage can for CD/DVD/Card
14572 - 5872	With CD/DVD/Card garbage can - exclusive opening



# **DOCUMENT SHREDDERS – Series 320**

Properly disposing of documents containing personal and confidential information is crucial to avoid the risk of data theft. Therefore, the **Menno Destroyer 320 Shredder** is an excellent choice for companies concerned about the security of their information.

## **Outstanding Features:**

Developed to meet the high demands of the corporate environment, this shredder offers a power of 1,100 W and a moderate noise level (62 dB A), ensuring efficiency without causing excessive disturbances. Its durability is guaranteed by the steel construction, making it a robust and reliable machine.

With two security options - P4, which shreds into particles, and P2, which shreds into strips - the Destroyer Menno 320 offers flexibility to meet the specific needs of each company.

The button and automatic activation by electronic sensor ensure ease of use and efficiency in operation. Additionally, equipped with metal gears and chains, as well as a safety sensor, this shredder offers protection and peace of mind during the shredding process.

Capable of shredding up to 30 sheets in the particle model and 50 sheets in the strip model (A4 or Letter size 75g/m<sup>2</sup>) at once and continuous operation, the Destroyer Menno 320 is a high-performance machine. In the strip model, it can cut up to 35 A3 sheets (75g/m<sup>2</sup>). Its 110-liter bin provides convenience in collecting shredded waste, and the option of a separate bin for CD/DVD/Card ensures the safe disposal of these materials.

Completing its features, the presence of wheels facilitates the transportation of the shredder within the work environment, ensuring adaptability and convenience.

**The Menno Destroyer 320 Shredder is more than just an office machine; it is a complete solution for the secure and efficient management of confidential documents.**



# DOCUMENT SHREDDERS – Series 320 *BR P*



Insertion opening for paper	320 mm
Opening for CD/DVD and PVC cards	130 mm - optional
Activation	Push-button and automatic by electronic sensor
Average shredding capacity	95 kg/h
Available color	Black with stainless steel detail
Shreds staples and clips	Yes
LED indication	Green - Ready / Red - Bin full
Noise level	62 dB (A)
Maximum number of sheets	30 A4 or Legal sheets (75g/m <sup>2</sup> )   18 A3 sheets (75g/m <sup>2</sup> )
Gears and chainrings	Metallic
Gross weight	95 Kg
Net weight	80 Kg
Power	1,100 W (0.7 hp)
Reversal	Automatic and manual
Garbage can full sensor	Yes
Paper presence sensor	Yes
Safety sensor	Yes
Garbage can safety sensor	Yes
Operating time	Continuous
Type of shredding	4 x 40 mm particles
Shredding speed	3.6 m/min
Garbage can volume	110 liters

Code	Description
14620 - 6038	No garbage can for CD/DVD/Card
14620 - 5111	With CD/DVD/Card garbage can - exclusive opening



# DOCUMENT SHREDDERS – Series 320 *BR T*



Insertion opening for paper	320 mm
Opening for CD/DVD and PVC cards	130 mm - optional
Activation	Push-button and automatic by electronic sensor
Average shredding capacity	190 kg/h
Available color	Black with stainless steel detail
Shreds staples and clips	Yes
LED indication	Green - Ready / Red - Bin full
Noise level	62 dB (A)
Maximum number of sheets	50 A4 or Legal sheets   35 A3 sheets (75g/m²)
Gears and chainrings	Metallic
Gross weight	80 Kg
Net weight	75 Kg
Power	1,100 W (0.7 hp)
Reversal	Automatic and manual
Garbage can full sensor	Yes
Paper presence sensor	Yes
Safety sensor	Yes
Garbage can safety sensor	Yes
Operating time	Continuous
Type of shredding	6 mm strips
Shredding speed	4 m/min
Garbage can volume	110 liters

Code	Description
14620 - 6036	No garbage can for CD/DVD/Card
14620 - 5852	With CD/DVD/Card garbage can - exclusive opening



# | DOCUMENT SHREDDERS – Series 350

The ***Menno Destroyer 350 Shredder*** has been meticulously designed to meet the highest demands, allowing continuous and uninterrupted use. Its steel construction, from the gears to its structure, ensures exceptional durability, guaranteeing consistent performance over time.

## **Outstanding Features:**

With two security level options, it offers versatility to meet the specific needs of each user. At security level P3, shredding into particles, the shredder can process up to 285 kg of paper per hour, providing a reliable solution for the destruction of sensitive documents. On the other hand, at security level P2, shredding into strips, the Menno Destroyer 350 offers even greater performance, shredding up to 366 kg/h of paper per hour. Both options have a 150-liter bin capacity.

Equipped with button operation, which allows on/off/reverse functions, this shredder offers ease of use and total control over the shredding process. Its dimensions (620mm x 560mm x 1050mm) guarantee an imposing presence, while the noise level of 76 dB (A) maintains a relatively quiet work environment.

The metal gears and chains provide smooth and reliable operation, while the integrated safety sensor ensures user protection during use. Designed for continuous operation, this shredder is a true ally for any work environment that requires high performance.

**With wheels on the bin, the Menno Destroyer 350 Shredder offers additional mobility, facilitating the emptying and transport of shredded waste. In summary, it is a complete and reliable solution for the secure destruction of confidential documents.**



# | DOCUMENT SHREDDERS – Series 350





# DOCUMENT SHREDDERS – Series 350

Destroyer 350 BR P

351 - 1147

Insertion opening for paper	350 mm
Activation	Button - On/Off/Reverse
Average shredding capacity	285 kg/h
Available color	Black with stainless steel detail
Dimensions (mm)	620 (W) x 560 (D) x 1050 (H)
Gears and chains	Metallic
Shreds staples and clips	Yes
Noise level	76 dB (A)
Security level	P3
Maximum number of sheets	35 A4 sheets and 25 A3 sheets (75g/m <sup>2</sup> )
Gears and chainrings	Metallic
Gross weight	126 Kg
Net weight	110 Kg
Power	750 W (1cv)
Reversal:	Button
Garbage can full sensor	Yes
Paper presence sensor	Yes
Safety sensor	Yes
Garbage can safety sensor	Yes
Operating time	Continuous
Type of shredding	4.5 x 55 mm particles
Shredding speed	8.6 m/min
Garbage can volume	150 liters

Destroyer 350 BR T

351 - 1145

Insertion opening for paper	350 mm
Activation	Button - On/Off/Reverse
Average shredding capacity	366 kg/h
Available color	Black with stainless steel detail
Dimensions (mm)	620 (W) x 560 (D) x 1050 (H)
Gears and chains	Metallic
Shreds staples and clips	Yes
Noise level	76 dB (A)
Security level	P2
Maximum number of sheets	45 A4 sheets and 32 A3 sheets (75g/m <sup>2</sup> )
Gears and chainrings	Metallic
Gross weight	126 Kg
Net weight	110.5 Kg
Power	750 W (1cv)
Reversal:	Button
Garbage can full sensor	Yes
Paper presence sensor	Yes
Safety sensor	Yes
Garbage can safety sensor	Yes
Operating time	Continuous
Type of shredding	6 mm strips
Shredding speed	8.6 m/min
Garbage can volume	150 liters



# | DOCUMENT SHREDDERS – Series 400

Properly disposing of old documents containing personal and confidential information is crucial to avoid the risk of data theft. Therefore, the ***Menno Destroyer Series 400 Shredder*** represents the pinnacle of corporate shredding. Designed to meet the highest demands, it allows continuous use without rest intervals.

## **Outstanding Features:**

Durability is a fundamental aspect, and our Destroyer line is entirely made of steel, from the gears to its structure, ensuring exceptional resistance and reliability.

With key operation, which allows on/off functions, this shredder offers total control over the shredding process. Its feed tray capacity and 190-liter bin volume ensure efficiency and convenience during use.

The imposing dimensions (750mm x 1,550mm x 1,120mm) of the Menno Destroyer Series 400 demonstrate its robust and efficient presence in the work environment. Despite this, the noise level of only 70 dB (A) maintains a relatively quiet work environment.

With P3 particle security levels and P1 strip levels, this shredder offers versatility to meet the specific needs of each user. Equipped with a safety sensor, it ensures additional protection during use.

The metal gears, chains, and scraper combs ensure smooth and reliable operation, while the 400 mm paper insertion opening allows for the easy processing of a large number of documents.

**The Menno Destroyer Series 400 Shredder is a complete and reliable solution for the secure destruction of confidential documents in corporate environments.**



# | DOCUMENT SHREDDERS – Series 400





# DOCUMENT SHREDDERS – Series 400

**Destroyer 400 P**

13236 - 3909	220 V
13236 - 3910	380 V

Insertion opening for paper	400 mm
Activation	On/off switch
Average shredding capacity	1,914 kg/h
Available color	Black with stainless steel detail
Dimensions (mm)	750 (W) x 1.550 (D) x 1.120 (H)
Gears and chains	Metallic
Shreds staples and clips	Yes
Indication LED	In the switches
Noise level	70 dB (A)
Security level	P3
Maximum number of sheets	45 A4 sheets and 32 A3 sheets (75g/m <sup>2</sup> )
Scraping combs	Metallic
Gross weight	300 Kg
Net weight	240 Kg
Power	5,520 W (7.5 hp)
Reversal:	Switch
Garbage can full sensor	Yes
Paper presence sensor	Yes
Safety sensor	Yes
Garbage can safety sensor	Yes
Operating time	Continuous
Type of shredding	6.5 x 47.5 mm particles
Shredding speed	45 m/min
Garbage can volume	190 liters
Power tray capacity	500 sheets

**Destroyer 400 T**

9017 - 2549	220 V
9017 - 2829	380 V

Insertion opening for paper	400 mm
Activation	On/off switch
Average shredding capacity	2,126 Kg/h
Available color	Black with stainless steel detail
Dimensions (mm)	750 (W) x 1.550 (D) x 1.120 (H)
Gears and chains	Metallic
Shreds staples and clips	Yes
Indication LED	In the switches
Noise level	70 dB (A)
Security level	P1
Maximum number of sheets	50 sheets A4 or Legal (75 g/m <sup>2</sup> )
Scraping combs	Metallic
Gross weight	281 Kg
Net weight	220 Kg
Power	3,680 W (5cv)
Reversal:	Switch
Garbage can full sensor	Yes
Paper presence sensor	Yes
Safety sensor	Yes
Garbage can safety sensor	Yes
Operating time	Continuous
Type of shredding	10 mm strips
Shredding speed	45 m/min
Garbage can volume	190 liters
Power tray capacity	500 sheets



# | GUILLOTINES - GPM

GPM 200



GPM 297



GPM 420



GPM 460



CODES		EQUIPMENT	LOT <b>MORE</b> THAN 10 UNITS	LOT <b>UP TO</b> 10 UNITS
CODE	MATRIX ID	GPM Guillotine - Sharpened Blades	Price (US\$)	Price (US\$)
15029	4594	Guillotine GPM 200 - Black	\$18,00	\$19,00
15029	4597	Guillotine GPM 255 - Black	\$19,00	\$20,00
15029	4591	Guillotine GPM 297 - Black	\$20,00	\$21,00
15031	4651	Guillotine GPM 420 - Black	\$24,00	\$25,00
15426	4951	Guillotine GPM 460 - Black	\$35,00	\$36,00



# | GUILLOTINES - GPM 200



Maximum cutting capacity	15 sheets (75g/m <sup>2</sup> )
Cut length	330 mm
Available color	Black
Dimensions (mm)	527 (W) x 230 (D) x 68 (H)
Top dimensions (mm)	394 (W) x 202 (D)
Gross weight	1,9 Kg
Net weight	1,6 Kg
Type of cut	By friction - sharp machete
Description	Black   White Serigraphy
Code	15029-4594



# | GUILLOTINES - GPM 255



Maximum cutting capacity	15 sheets (75g/m <sup>2</sup> )
Cut length	330 mm
Available color	Black
Dimensions (mm)	527 (W) x 276 (D) x 68 (H)
Top dimensions (mm)	394 (W) x 255 (D)
Gross weight	2,1 Kg
Net weight	1,8 Kg
Type of cut	By friction - sharp machete
Description	Black   White Serigraphy
Code	15029-4597



# | GUILLOTINES - GPM 297



Maximum cutting capacity	15 sheets (75g/m <sup>2</sup> )
Cut length	330 mm
Available color	Black
Dimensions (mm)	527 (W) x 324 (D) x 68 (H)
Top dimensions (mm)	394 (W) x 303 (D)
Gross weight	2,4 Kg
Net weight	2 Kg
Type of cut	By friction - sharp machete
Description	Black   White Serigraphy
Code	15029-4591



# | GUILLOTINES - GPM 420



Maximum cutting capacity	15 sheets (75g/m <sup>2</sup> )
Cut length	340 mm
Available color	Black
Dimensions (mm)	553 (W) x 450 (D) x 72 (H)
Top dimensions (mm)	395 (W) x 428 (D)
Gross weight	3,4 Kg
Net weight	2,9 Kg
Type of cut	By friction - sharp machete
Description	Black   White Serigraphy
Code	15031-4651



# | GUILLOTINES - GPM 460

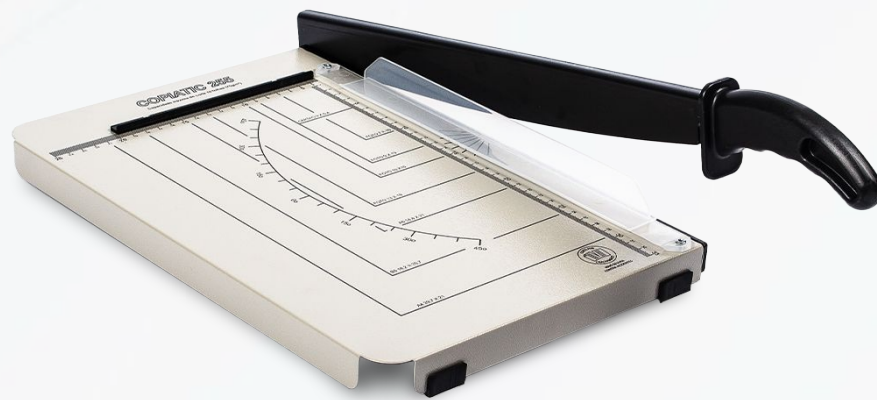


Maximum cutting capacity	20 sheets (75g/m <sup>2</sup> )
Cut length	460 mm
Available color	Black
Dimensions (mm)	675 (W) x 375 (D) x 80 (H)
Top dimensions (mm)	540 (W) x 350 (D)
Gross weight	5,2 Kg
Net weight	4,6 Kg
Type of cut	By friction - sharp machete
Description	Black   White Serigraphy
Code	15426-4951

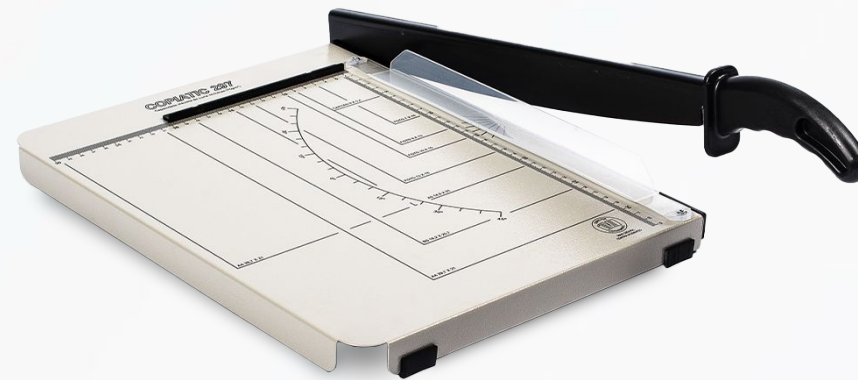


# | GUILLOTINES - COPIATIC

COPIATIC 255



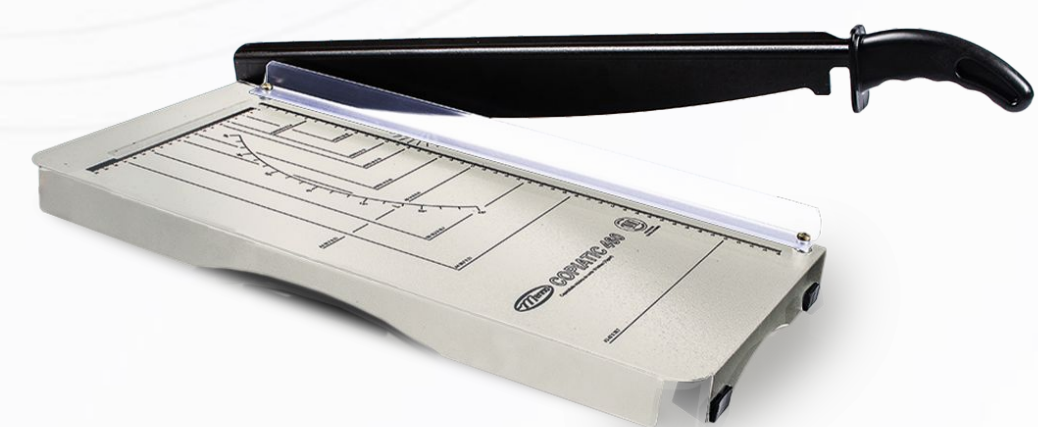
COPIATIC 297



COPIATIC 420



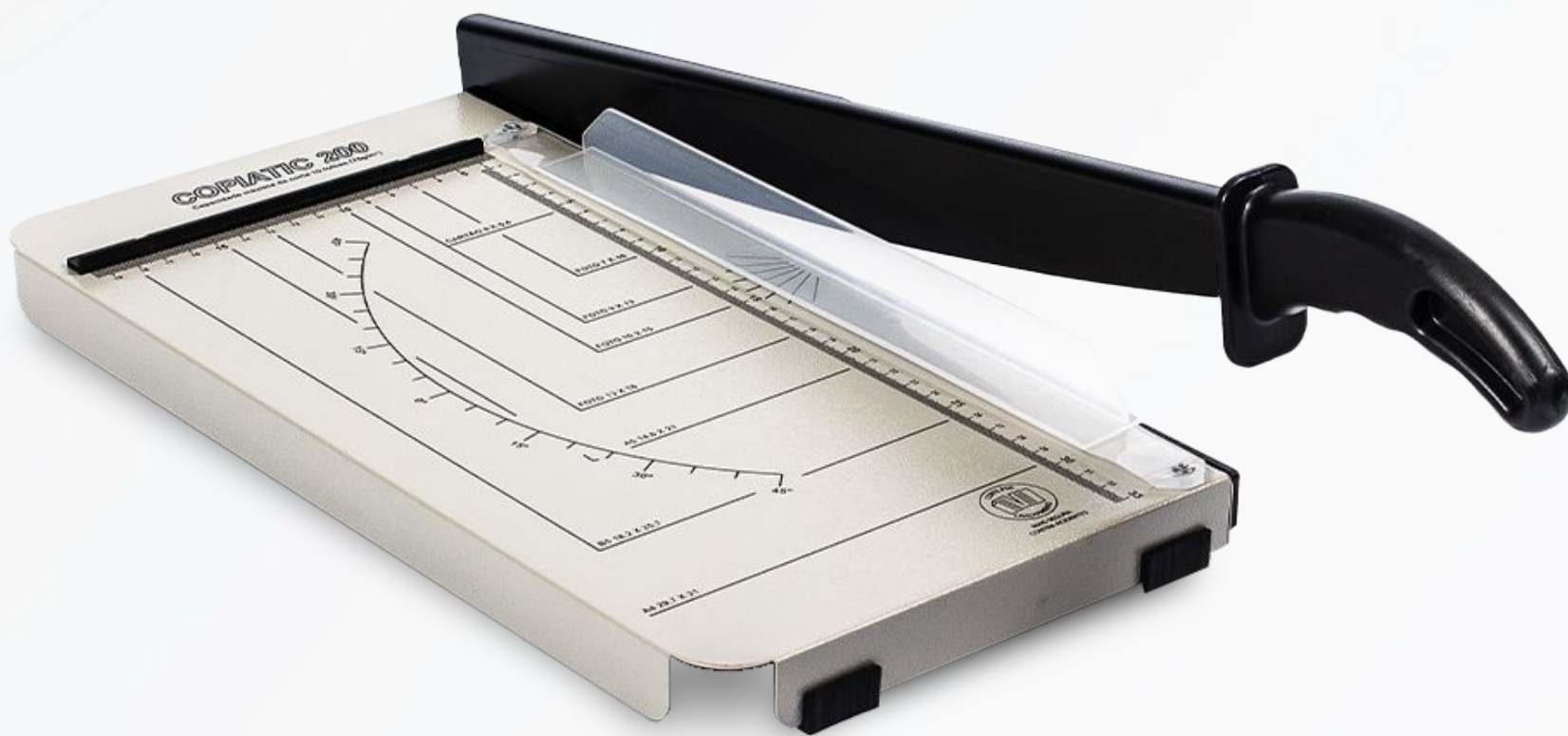
COPIATIC 460



CODES		EQUIPMENT	LOT <b>MORE</b> THAN 10 UNITS	LOT <b>UP TO</b> 10 UNITS
CODE	MATRIX ID	Copiatric Guillotine - Unsharpened Blade	Price (US\$)	Price (US\$)
15028	4630	Guillotine Copiatric 200 - Beige	\$16,00	\$17,00
15028	4633	Guillotine Copiatric 255 - Beige	\$17,00	\$18,00
15028	4627	Guillotine Copiatric 297 - Beige	\$18,00	\$19,00
15030	4655	Guillotine Copiatric 420 - Beige	\$23,00	\$24,00
15487	4971	Guillotine Copiatric 460 - Beige	\$34,00	\$35,00



# | GUILLOTINES - COPIATIC 200



<b>Maximum cutting capacity:</b>	10 sheets (75g/m <sup>2</sup> )
<b>Cutting length:</b>	330 mm
<b>Available color: Beige</b>	Beige
<b>Dimensions (mm):</b>	527 (Width) x 230 (Depth) x 68 (Height)
<b>Table dimensions (mm):</b>	394 (Width) x 202 (Depth)
<b>Gross weight:</b>	1,7 Kg
<b>Net weight:</b>	1,4 Kg
<b>Type of cut:</b>	Friction - non-sharpened blade
<b>Code:</b>	15028-4632
<b>Description:</b>	Black serigraphy



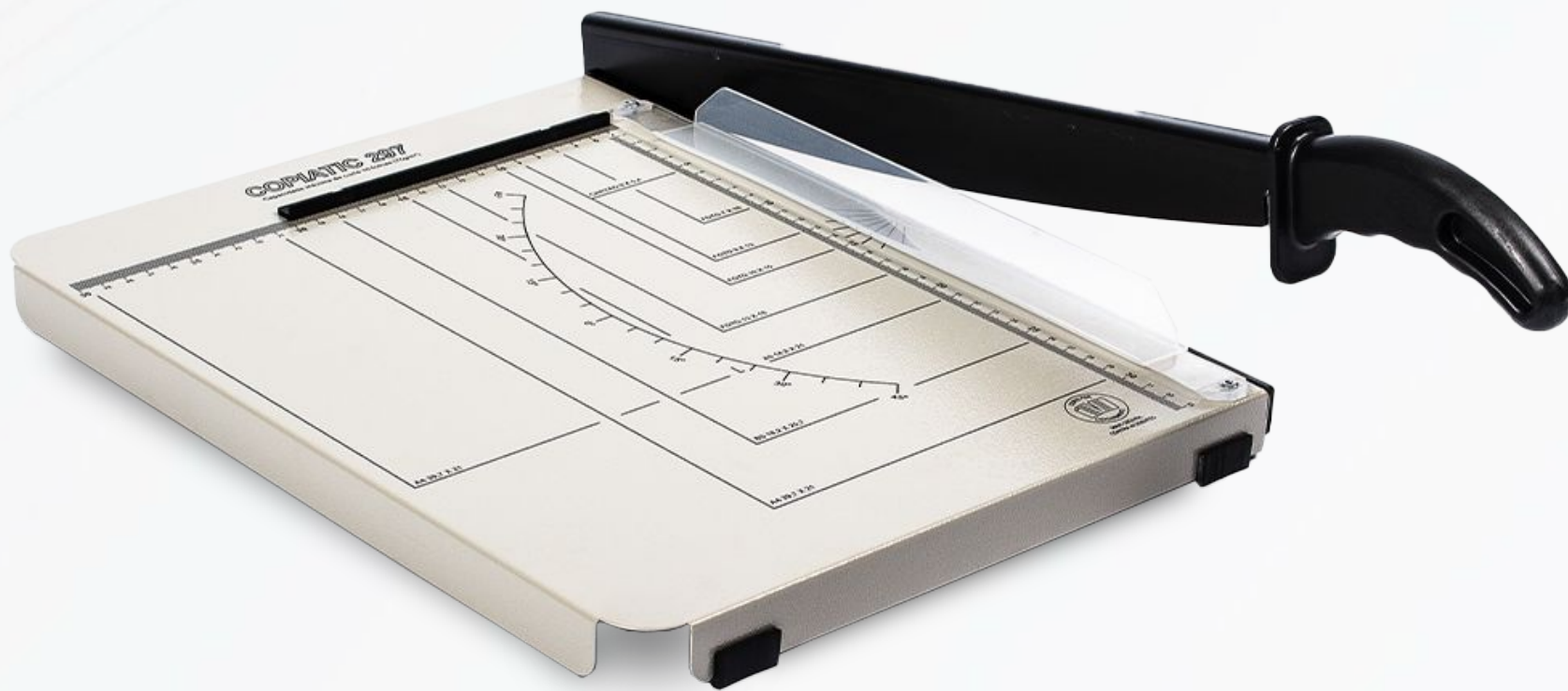
# | GUILLOTINES - COPIATIC 255



<b>Maximum cutting capacity:</b>	10 sheets (75g/m <sup>2</sup> )
<b>Cutting length:</b>	330 mm
<b>Available color: Beige</b>	Beige
<b>Dimensions (mm):</b>	527 (Width) x 268 (Depth) x 68 (Height)
<b>Table dimensions (mm):</b>	394 (Width) x 255 (Depth)
<b>Gross weight:</b>	2 Kg
<b>Net weight:</b>	1,6 Kg
<b>Type of cut:</b>	Friction - non-sharpened blade
<b>Code:</b>	15028-4635
<b>Description:</b>	Black serigraphy



# | GUILLOTINES - COPIATIC 297



<b>Maximum cutting capacity:</b>	10 sheets (75g/m <sup>2</sup> )
<b>Cutting length:</b>	330 mm
<b>Available color: Beige</b>	Beige
<b>Dimensions (mm):</b>	527 (Width) x 319 (Depth) x 68 (Height)
<b>Table dimensions (mm):</b>	394 (Width) x 303 (Depth)
<b>Gross weight:</b>	2,2 Kg
<b>Net weight:</b>	1,8 Kg
<b>Type of cut:</b>	Friction - non-sharpened blade
<b>Code:</b>	15028-4629
<b>Description:</b>	Black serigraphy



# | GUILLOTINES - COPIATIC 420



<b>Maximum cutting capacity:</b>	10 sheets (75g/m <sup>2</sup> )
<b>Cutting length:</b>	340 mm
<b>Available color: Beige</b>	Beige
<b>Dimensions (mm):</b>	553 (Width) x 450 (Depth) x 72 (Height)
<b>Table dimensions (mm):</b>	395 (Width) x 428 (Depth)
<b>Gross weight:</b>	3,4 Kg
<b>Net weight:</b>	2,9 Kg
<b>Type of cut:</b>	Friction - non-sharpened blade
<b>Code:</b>	15030-4657
<b>Description:</b>	Black serigraphy



# | GUILLOTINES - COPIATIC 460



<b>Maximum cutting capacity:</b>	15 sheets (75g/m <sup>2</sup> )
<b>Cutting length:</b>	460 mm
<b>Available color: Beige</b>	Beige
<b>Dimensions (mm):</b>	675 (Width) x 280 (Depth) x 72 (Height)
<b>Table dimensions (mm):</b>	540 (Width) x 250 (Depth)
<b>Gross weight:</b>	3,7 Kg
<b>Net weight:</b>	3,1 Kg
<b>Type of cut:</b>	Friction - non-sharpened blade
<b>Code:</b>	15487-4973
<b>Description:</b>	Black serigraphy



# TRIMMERS (ROTARY GUILLOTINE)

Ideal for providing precision and finishing on any type of paper before being bound, punched, or filed. The Rotary Guillotines are made of steel, electrostatically painted, and can cut up to **4 sheets at a time**, with the exception of the SNF, which cuts **3 sheets at a time**. They come with a millimeter scale and standard cutting dimensions, as well as a safety ruler and paper clamp to prevent incorrect cuts.

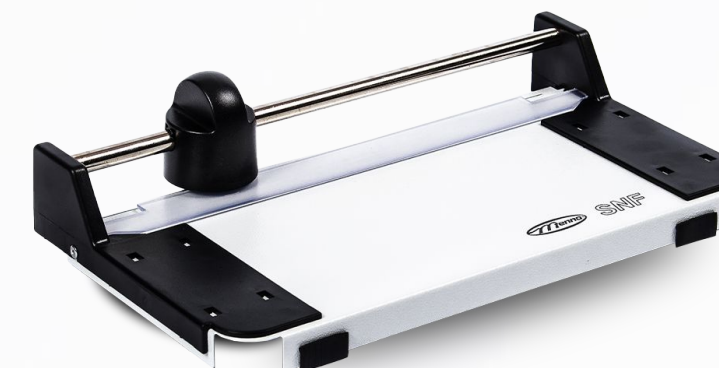
RPM 297



RPM 420



SNF



CODES		EQUIPMENT	LOT MORE THAN 10 UNITS	LOT UP TO 10 UNITS
CODE	MATRIX ID	Rotary Guillotine	Price (US\$)	Price (US\$)
477		Rotary Guillotine Menno 297	\$20,00	\$21,69
480		Rotary Guillotine Menno 420	\$22,62	\$24,53
498		Rotary Guillotine SNF (serrated cut)	\$17,29	\$18,75

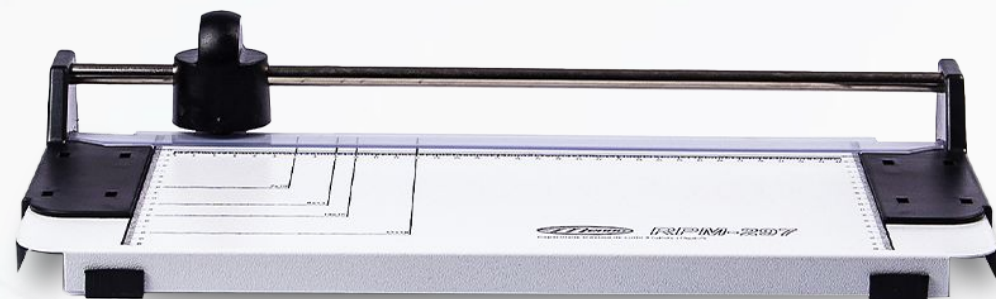
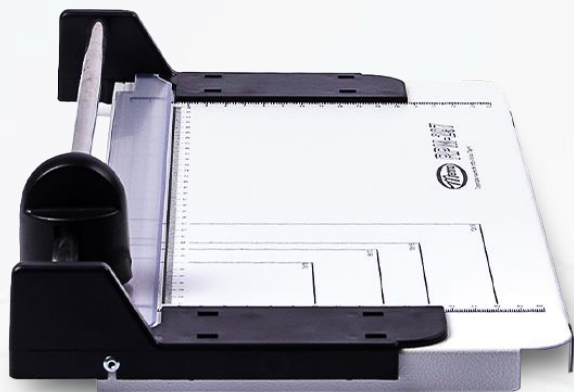


# TRIMMERS (ROTARY GUILLOTINE)

RPM 297



Maximum cutting capacity	4 sheets (75g/m <sup>2</sup> )
Cut length	350 mm
Available color	White
Dimensions (mm)	460 (W) x 245 (D) x 85 (H)
Top dimensions (mm)	350 (W) x 210 (D)
Gross weight	2,5 Kg
Net weight	2 Kg
Blade material	30 L Stainless steel





# TRIMMERS (ROTARY GUILLOTINE)

RPM 420



Maximum cutting capacity	4 sheets (75g/m <sup>2</sup> )
Cut length	450 mm
Available color	White
Dimensions (mm)	560 (W) x 245 (D) x 85 (H)
Top dimensions (mm)	450 (W) x 210 (D)
Gross weight	3,1 Kg
Net weight	2,85 Kg
Blade material	30 L stainless steel



# TRIMMERS (ROTARY GUILLOTINE)

SNF



Maximum cutting capacity	3 sheets (75g/m <sup>2</sup> )
Cut length	230 mm
Available color	White
Dimensions (mm)	340 (W) x 200 (D) x 85 (H)
Top dimensions (mm)	231 (W) x 168 (D)
Gross weight	2 Kg
Net weight	1.6 Kg
Blade material	30 L stainless steel





# LAMINATOR – PLM 23

The **PLM 23** is a compact machine developed to handle a high volume of lamination. Produced in Brazil, it is a high-tech device. With its metal rollers and resistance heating, the PLM requires a thermal protector to perform the lamination process.



Opening for insertion	230 mm
Lamination thickness	75 - 125 microns   0.5 mm
Plasticizing capacity	1 at a time
Energy consumption	0.45 KW/h
Available color: Beige	Beige
Dimensions (mm)	350 (W) x 189 (D) x 95 (H)
Material	Lid and base in high-impact polyethylene
Gross weight	3 Kg
Net weight	2.6 Kg
Power	450 W
Warm-up time	3 to 5 minutes
Plasticizing speed	310 mm/minute

CODES		EQUIPMENT	LOT MORE THAN 10 UNITS	LOT UP TO 10 UNITS
CODE	MATRIX ID	Laminators and Laminating Supplies	Price (US\$)	Price (US\$)
162	192	Laminator PLM 23 Volts (127V or 220V)	\$79,82	\$86,56
165		Thermal Protector 230 x 360 – PLM -23	\$0,94	\$1,02



# CASH DRAWERS



CODES		EQUIPMENT	LOT MORE THAN 10 UNITS	LOT UP TO 10 UNITS
CODE	MATRIX ID	Cash Drawer MG-40 Manual   Cases   Cash Boxes	Price (US\$)	Price (US\$)
4191	2470	Cash Drawer MG-40 CS - BLACK	\$37,20	\$38,91
12961	3869	Cash Drawer MG-40 CS ECO - BLACK	\$31,14	\$32,57
14360	4312	Metal Case MG 40 BLACK – Metal Latch - BLACK	\$24,66	\$25,79
9534		Cash Drawer MG-40 with Lid and Key - BLACK	\$13,51	\$14,13
CODE	MATRIX ID	Cash Drawer MG-41	Price (US\$)	Price (US\$)
22807	16611	Cash Drawer MG 41 CS ECO - BLACK	\$25,15	\$26,31
22807	16613	Cash Drawer MG 41 B - BLACK	\$36,51	\$38,19
22807	16617	Cash Drawer MG 41 B Plus - BLACK	\$38,33	\$40,09
CODE	MATRIX ID	Electronic Cash Drawer MG-40	Price (US\$)	Price (US\$)
4191	2456	Cash Drawer MG-40 B - BLACK	\$41,28	\$43,18
4191	3009	Cash Drawer MG-40 B Plus - BLACK	\$45,88	\$47,99
12282	3530	Cash Drawer MG 20 B - BEIGE	\$72,40	\$75,73
4202	2729	Cash Drawer MG-21 B - Stainless Steel	\$56,29	\$58,88
5406	2749	Cash Drawer MGI-21 AC - Stainless Steel	\$64,66	\$67,64
CODE	MATRIX ID	Cash Drawer Accessories	Price (US\$)	Price (US\$)
4287		Cash Tray MG-40 with Plastic Note Holder	\$4,64	\$4,79
9306		Cash Tray MG-40 with Metal Note Holder	\$5,27	\$5,43
4290		Cash Tray MG-50 with Note Holder	\$14,48	\$14,94

## Valid for all cash drawers

### Explanation of the abbreviations for cash drawers

**MG 41:** Removes only the coin tray

**MG 40:** Removes the entire bill holder and coin tray (ideal for large chain supermarkets)

**CS ECO:** Opens with top button

**CS:** Opens with front button (available only in MG 40)

**B:** Opens with printer (The key is used only to lock)

**B Plus:** Opens with printer and key (The key has 3 positions: close, open, and standby)



# CASH DRAWER - MG 41 CS Eco

The **MG 41 CS Eco** drawer is ideal for organizing your money. It features 5 compartments sized for each bill denomination and 8 coin separators. Its internal box is made entirely of high-strength ABS plastic. It has a bill pressure mechanism without a spring, thus avoiding potential maintenance. It opens via the top latch and locks with a key.



Opening	Manual - Top button
Front opening	Slit for inserting checks
Color available	Black, White, Beige
Dimensions (mm)	405 (W) x 420 (D) x 115 (H)
Net weight	4,3 Kg
Gross weight	5 Kg
Partitions	5 for banknotes and 8 for coins
Other features	Rubber feet support; Steel cabinet and Electrostatic painting; Compartments for banknotes and coins with metal clips; Stainless steel metal clamps and telescopic rails.



# CASH DRAWER - MG 41 B

Organize your cash register with the **MG 41 B** drawer, which has 5 compartments sized for each bill denomination and 8 coin separators. Its internal box is made entirely of high-strength ABS plastic. It features a bill pressure mechanism without a spring, eliminating the need for potential maintenance. It opens with a printer and locks with a key.



Opening	Electric pulse
Front opening	Slit for inserting checks
Connector	RJ12 or RJ11
Color available	Black, White, Beige
Dimensions (mm)	405 (W) x 420 (D) x 115 (H)
Dividers	5 for banknotes and 8 for coins
Gross weight	5,2 Kg
Net weight	4,6 Kg
Lock	2 positions (locked and unlocked)
Voltage	24V / 12V
Other features	Supported by rubber feet; Steel cabinet with electrostatic paint; Metal clamps and stainless steel telescopic rails; Springless note holders, maintenance-free; Open and closed drawer sensor.



# CASH DRAWER - MG 41 *B Plus*

The **MG 41 B Plus** Cash Drawer is ideal for organizing your money. It has 5 compartments sized for each bill denomination and 8 coin separators. Its internal box is made entirely of high-strength ABS plastic. It features a bill pressure mechanism without a spring, eliminating the need for potential maintenance. It opens with a printer and locks with a key.

Opening	Electric pulse  Key
Front opening	Slit for inserting checks
Color available	Black, White, Beige
Connector	RJ12 or RJ11
Tension	24V / 12V
Dimensions (mm)	405 (W) x 420 (D) x 115 (H)
Net weight	5,3 Kg
Gross weight	4,7 Kg
Partitions	5 for banknotes and 8 for coins
Other features	Supported by rubber feet;  Steel cabinet with electrostatic paint;  Metal clamps and stainless steel telescopic rails;  Springless note holders, maintenance-free;  Open and closed drawer sensor.





# CASH DRAWER - MG 40 CS *Eco*

The **MG 40 CS *Eco*** Drawer has a fully steel structure, providing high durability and making it ideal for large supermarkets and retail chains with high cash register turnover. It has a top button for opening the drawer and a key for secure locking.



Opening	Manual - Top button
Front opening	Slit for inserting checks
Color available	Black, White, Beige
Dimensions mm	423 (W) x 405 (D) x 115 (H)
Net weight	5,4 Kg
Gross weight	6,1 Kg
Partitions	5 for banknotes and 8 for coins
Other features	Sheet steel box with switch; Electrostatic powder coating; Compartments for banknotes and coins with metal clips; Supported by rubber feet.



# CASH DRAWER - MG 40 CS

The **MG 40 CS** Drawer has a removable internal cash holder that can be replaced with another. With a fully steel structure, it offers high durability and is ideal for large supermarkets and retail chains with high cash register turnover. The MG 40 CS Cash Drawer has a front button for opening the drawer and a key for secure locking.



Opening	Manual - Front button
Front opening	Slit for inserting checks
Color available	Black, Beige
Dimensions mm	423 (W) x 405 (D) x 115 (H)
Net weight	5,7 Kg
Gross weight	6,3 Kg
Partitions	5 for banknotes and 8 for coins
Other features	Sheet steel box with switch; Electrostatic powder coating; Compartments for banknotes and coins with metal clips; Supported by rubber feet.



# CASH DRAWER - MG 40 B

The **MG 40 B** Drawer has a removable internal cash holder that can be replaced with another. With its fully steel structure, it has high durability and is ideal for large supermarkets and retail chains with cash register turnover. It opens via an electric impulse and has a key to lock the drawer.



Opening	Electric pulse
Front opening	Slit for inserting checks
Color available	Black, White, Beige
Dimensions mm	423 (W) x 405 (D) x 115 (H)
Connector	RJ12 or RJ11
Tension	24V
Gross weight	6,3 Kg
Net weight	5,7 Kg
Partitions	5 for banknotes and 8 for coins
Other features	Supported by rubber feet; Steel sheet housing; With Key; Electrostatic painting.



# CASH DRAWER - MG 40 *B Plus*

The **MG 40 *B Plus*** Drawer has a removable internal cash holder that can be replaced with another. With its fully steel structure, it offers high durability and is ideal for large supermarkets and retail chains with a high volume of cash registers. It opens via an electric impulse and has a key for opening and closing the drawer.



Opening	Electric pulse   Key
Front opening	Slit for inserting checks
Color available	Black, Beige
Connector	RJ12 or RJ11
Tension	24V
Dimensions mm	423 (W) x 405 (D) x 115 (H)
Net weight	6,3 Kg
Gross weight	5,7 Kg
Partitions	5 for banknotes and 8 for coins
Other features	Supported by rubber feet; Steel sheet housing; With switch; Electrostatic painting; Compartments for banknotes and coins with metal clips.



# CASH DRAWER - MG 20 B

The best option for those seeking quality and durability. It offers practicality in organizing payments, being activatable by a fiscal printer or manually, with a front slot for check insertion and internal divisions for organization.



<b>Opening</b>	Vertical Electric and Manual
<b>Front opening</b>	Slit for inserting checks
<b>Connector</b>	RJ12 or RJ11
<b>Tension</b>	24 V
<b>Dimensions (mm)</b>	478 (W) x 478 (D) x 90 (H)
<b>Net weight</b>	4,4 Kg
<b>Gross weight</b>	4,8 Kg
<b>Partitions</b>	4 for banknotes and 6 for coins
<b>Other features</b>	Supported by rubber feet; Reversing spring to open the lid; Product prepared for new banknotes; Internal protection against liquid ingress; Brushed stainless steel lid.



# CASH DRAWER - MG 21 B

The **MG 21 B** drawer has been designed to meet the needs of demanding customers who seek the best option for their business. It offers practicality in organizing payments. The durability of the drawers is very important, being a national product made of stainless steel, which ensures durability and an excellent finish.



Opening	Vertical, manual or electric
Connector	RJ12 or RJ11
Tension	24 V
Dimensions (mm)	490 (W) x 170 (D) x 110 (H)
Net weight	6,1 Kg
Gross weight	6,7 Kg
Partitions	4 for banknotes and 6 for coins
Other	Supported by rubber feet
Features	With key; With reversing spring to open the lid; It has a lid position sensor (open or closed).



# CASH DRAWER - MGI 21 AC

The **MG 21 AC** drawer has been designed to meet the needs of demanding customers who seek the best option for their business. It offers practicality in organizing payments. The durability of the drawers is very important, being a national product made of stainless steel, which ensures durability and an excellent finish.



Opening	Vertical, Electric and Manual
Connector	RJ12 or RJ11
Tension	24 V
Dimensions mm	490 (W) x 170 (D) x 110 (H)
Net weight	2,8 Kg
Gross weight	3,2 Kg
Partitions	4 for banknotes and 6 for coins
Other features	Manual security lock; Reversing spring to open the lid; Made from brushed stainless steel.



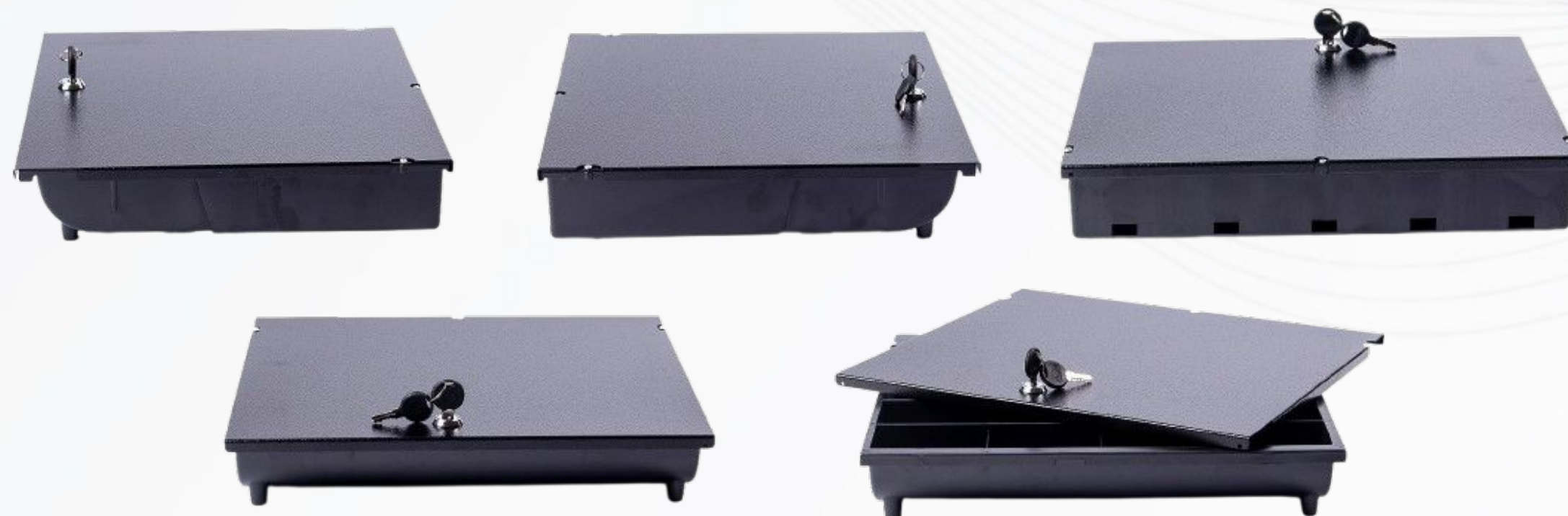
# SUITCASE - MG 40



Opening	Manual by Key
Front opening	Slit for inserting checks
Material	Steel plate 0.9 mm
External dimensions (mm)	360 (W) x 340 (D) x 70 (H)
Internal dimensions (mm)	352 (W) x 316 (D) x 65 (H)
Net weight	3,1 Kg
Gross weight	3,6 Kg
Partitions	5 for banknotes and 8 for coins
Other features	Electrostatic painting; Metal banknote clip; Prepared for new banknotes; Carrying handle; Rubber backing for extra grip.



# | Banknote and coin holders with lid and key



Banknote and coin holder made of ABS plastic with a steel lid

Code	Description	Dimensions (mm)	Gross Weight	Net Weight
9534	Banknote and coin holders with lid and key	358 (W) x 318 (D) x 58 (H)	2.1 kg	1.9 kg

## PRODUCT FEATURES

Material:	High impact polyethylene
Dividers:	5 for banknotes and 8 for coins
Other features:	Metal bill holder



# EXPLANATION OF THE ABBREVIATIONS FOR CASH DRAWERS

Valid for all cash drawers	
Explanation of the abbreviations for cash drawers	
MG 41: Removes only the coin tray	
MG 40: Removes the entire bill holder and coin tray (ideal for large chain supermarkets)	
CS ECO: Opens with top button	
CS: Opens with front button (available only in MG 40)	
B: Opens with printer (The key is used only to lock)	
B Plus: Opens with printer and key (The key has 3 positions: close, open, and standby)	



# | PAPER DEHUMIDIFIERS

High-impact polyethylene



600 A4



1500 A4

Metal



1000 A3  
or  
2000 A4



1500 A3  
or  
3000 A4

CODES		SUPPLIES	MORE THAN 10 UNITS	LOT OF UP TO 10 UNITS
CODE	MATRIX ID	Bivolt Paper Dehumidifier	Price (US\$)	Price (US\$)
11327	3612	Bivolt Plastic Paper Dehumidifier - Gray - 600 sheets	\$25,02	\$25,97
11327	3613	Bivolt Plastic Paper Dehumidifier - Gray - 1500 sheets	\$28,60	\$29,69
11327	3611	Bivolt Metal Paper Dehumidifier - White - 1000 sheets	\$67,78	\$70,35
11327	3614	Bivolt Metal Paper Dehumidifier - White - 1500 sheets	\$73,97	\$76,78



# | PAYMENT AND WARRANTY CONDITIONS

All our products have a **1-year** warranty, extendable up to **3** years.

Payment conditions:

- In advance - **100%**
- **50%** at the time of purchase and the remaining **50%** the following month
- **30%** down payment and the remaining **70%** at the time of shipment
- Payment in **3** installments





DESDE 1962

MENNO, ALL FUTURES ARE VIABLE