

redpie

Evaporative Air Coolers



- Energy efficient
- no compressor
- indoor & outdoor





AA8PMC KITCHEN KING



SMPLG7 BESTBUY



AA07RC



AA10RC NANO



AA20RC CHILLER



AA48PMC WONDER



AA48PMCO



AA60PMC ULTIMATE



AA60PMCO CLASSIC



AA30RC TWISTER



AA70RC TORNADO



AA80PMC ULTIMATE XL

Evaporative Cooling

How does it work?

Remember swimming on a hot, dry day, then getting out of the water and feeling the chill of the wind hitting your wet skin? Or simply try dipping your finger in a glass of water, then blowing air across your finger and feeling the cool sensation as the water evaporates. That's evaporative cooling. Try the same thing when there is no wind or no air moving. The surrounding air is quickly saturated with moisture, there is no evaporation and the cooling effect is gone. Evaporative cooling units create this naturally occurring process and provide a constant flow of cool, refreshing air into a hot, uncomfortable environment.

An evaporative air cooler cools the air by means of the evaporation of water. When water evaporates into the air, the result is a mixture of air and water molecules. This chemical change requires heat, thus energy or latent heat is taken from the air molecules - dropping the actual temperature of the air. The relative humidity is lowest in the afternoon when the temperature is at its highest. And the lower the humidity, the better the evaporative cooling effect. In other words, the cooling effect is best when you need it the most.

When used for cooling the evaporative air cooler should not be used in enclosed spaces. It must be kept level and there must be water in the water tank. The room should have doors and windows opened to allow free air flow. The evaporative air cooler works best when placed near an open window, so that fresh air is drawn into the evaporative air cooler and the air circulates in the room, and then leaves via the door. The maximum cooling effect is felt when a person is in the flow of air coming out of the evaporative air cooler.

The evaporative air cooler can also be used to humidify dry air during the cool weather months. To be used for humidification, the windows and doors should be closed. This will allow the humidified air to accumulate.

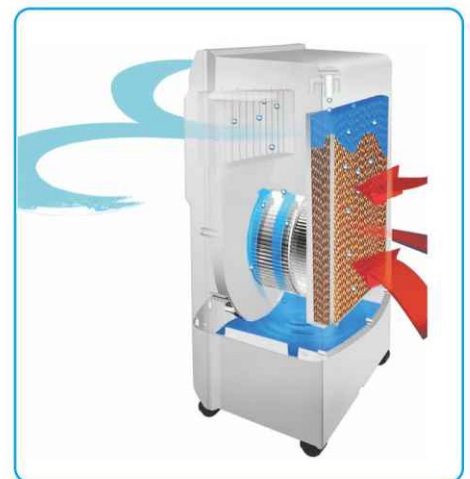
Evaporative coolers and central air conditioners both serve the same important purpose, keeping us cool. But these two systems operate very differently. Understanding the difference can help get the most out of any system and minimize wasted energy. It is environment friendly, Refrigerated cooling makes the air dry and uses refrigerants which may harm the environment. Evaporative cooling however is based on a totally natural process of air cooled by water which means it won't dry out the air, irritate your skin, throat or eyes, or affect the environment.

The advantages of the evaporative air cooler over refrigerated air conditioning are:

- Low purchase cost
- Low electricity usage
- Environment friendly (No refrigerant gas)
- Maximum portability
- Low maintenance cost.

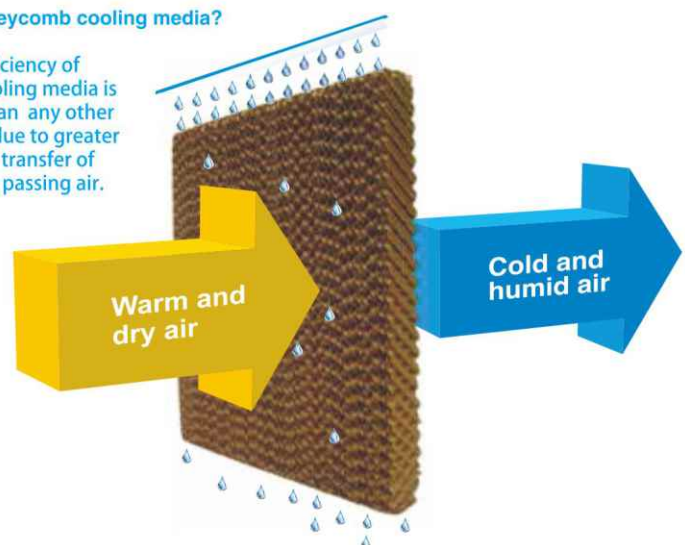


SAVE UP TO
80%
ON ENERGY COSTS*
COMPARED TO AIR CONDITIONERS



Why we use honeycomb cooling media?

- The Cooling efficiency of honeycomb cooling media is much higher than any other cooling media due to greater surface area for transfer of humidity to the passing air.



+Energy Cost = ((Wattage x No. of hrs/day x No. of days/year) / 1000) x per unit cost (kWh)

For Example : Energy Cost for Split 8000 BTU Air Conditioner = ((800 Watts x 16 hrs/day x 30 Days) / 1000) x 0.12 US\$ (average cost/kwh) = 46 US\$
Energy Cost for Evaporative Air Cooler = ((140 Watts x 16 hrs/day x 30 Days) / 1000) x 0.12 US\$ (average cost/kwh) = 8.06 US\$

* Under tested conditions, actual performance depends on unit and ambient condition.



AA8PMC KITCHEN KING



The AA8PMC evaporative air cooler is a stylish performer, ideal for a small-medium sized space in any home or office. With super-low power consumption of only 100 watts it delivers air flow of 480m³/hr (282 CFM) *, making it one of the most energy-efficient coolers in the indoor category.

Efficient honeycomb cooling media ensures optimum cooling and humidification .



Specifications and Features

- | | |
|--|--|
| Powerful Air flow
480m ³ /hr (282 CFM) | Power consumption :
100 watts |
| Water tank capacity :
5 Liter | Honeycomb cooling media
for optimum cooling |
| 3 speeds:
High/Med/Low | Oscillating louvers. |
| Easy mobility. | container qty:
1006pcs/40'HQ. |
| Works on inverter | |

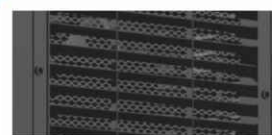
**All specifications mentioned are under test conditions, actual performance depends on ambient condition. Due to our continues endeavour for product improvement, the specifications are subject to change without prior notice

Model: AA8PMC

Product Size (mm)
345(L)x270(W)x650(H)
Packing Size (mm)
390(L)x320(W)x665(H)
NW: 3 kg / GW: 4.5 kg.



Adjustable louvers



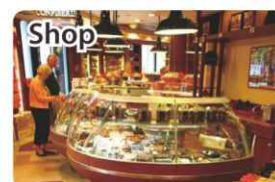
Honeycomb cooling media
for optimum cooling

Warm and
dry air

Cold and
humid air

Honey Comb Cooling Media

Ideal for:





SMPLG7 BESTBUY



The SMPLG7 evaporative air cooler is a stylish performer, ideal for a small-medium sized space in any home or office. With super-low power consumption of only 70 watts it delivers air flow of 460 m³/hr (270 CFM)*, making it one of the most energy-efficient coolers in the indoor category.

Efficient honeycomb cooling media ensures optimum cooling and humidification, while the semi-detachable water tank is easy to clean and refill.



Specifications and Features

- Powerful Air flow
460m³/hour 270 CFM
Cools Up To 16 sq. meters
- Power consumption :
70 watts
- Water tank capacity :
7 Liter
- Honeycomb cooling media
for optimum cooling
- 3 speeds:
High/Med/Low
- Oscillating louvers.
- Easy mobility.
- Detachable water tank
for easy cleaning
- Low water alarm
(optional)
- container qty:
687 pcs/40'HQ.
- Works on inverter

**All specifications mentioned are under test conditions, actual performance depends on ambient condition. Due to our continues endeavour for product improvement, the specifications are subject to change without prior notice

Model: SMPLG7

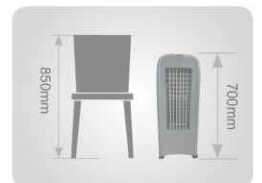
Product dimension (mm)

370(L)x 270(W) x 700(H)

Carton dimension (mm)

410(L)x 320(W) x 765(H)

NW: 7.9 kg / GW: 9.8 kg.



Adjustable louvers



Honeycomb cooling media
for optimum cooling

Honey Comb Cooling Media

Ideal for:





AA07RC

The AA07RC evaporative air cooler is a stylish performer, ideal for a small-medium sized space in any home or office. With super-low power consumption of only 50 watts it delivers air flow of 300 m³/hr (176 CFM)*, making it one of the most energy-efficient coolers in the indoor category.

Efficient honeycomb cooling media ensures optimum cooling and humidification, while in any home or office.





Specifications and Features

- | | |
|--|--|
| Powerful Air flow
300m ³ /hour 176 CFM
Cools Up To 11 sq. meters
/120 sq. feet | Power consumption :
50 watts |
| Water tank capacity :
7 Liter | Honeycomb cooling media
for optimum cooling |
| 3 speeds:
High/Med/Low | Remote control. |
| 0.5 to 7.5 hours OFF timer | Oscillating louvers. |
| Easy mobility. | Detachable water tank
for easy cleaning |
| Low water alarm
(optional) | container qty:
837 pcs/40'HQ. |
| | Works on inverter |

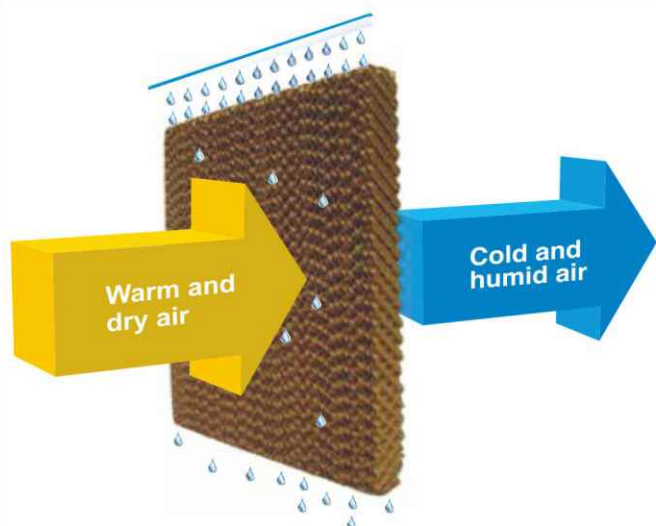
**All specifications mentioned are under test conditions, actual performance depends on ambient condition. Due to our continues endeavour for product improvement, the specifications are subject to change without prior notice

Model: AA07RC

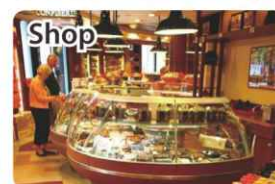
Product dimension (mm)
280.5 (L) x 303(W) x 719.5(H)
Carton dimension (mm)
315(L) x 335(W) x 765(H)
NW: 5.6 kg / GW: 7 kg.



Honey Comb Cooling Media



Ideal for:





AA10RC NANO



The AA10RC is a smartly designed portable evaporative air cooler with a adjustable humidification level and full function remote control.

Its efficient honeycomb cooling media ensures optimum cooling and humidification. The AA10RC is an evaporative air cooler for comfort in hot weather conditions.

It can also be used to humidify dry air during the cool weather months.



Specifications and Features

- | | |
|--|--|
| Powerful Air flow
510m ³ /hour 300 CFM
Cools Up To 16 sq. meters
/175 sq. feet | Power consumption :
150 watts |
| Water tank capacity :
10 Liter | Honeycomb cooling media
for optimum cooling |
| 3 speeds:
High/Med/Low | Remote control. |
| 1 to 7 hours OFF timer. | Adjustable
humidification level. |
| Oscillating louvers. | Easy mobility. |
| Low water alarm.
(optional) | container qty:
507 pcs/40'HQ. |
| | Works on inverter |

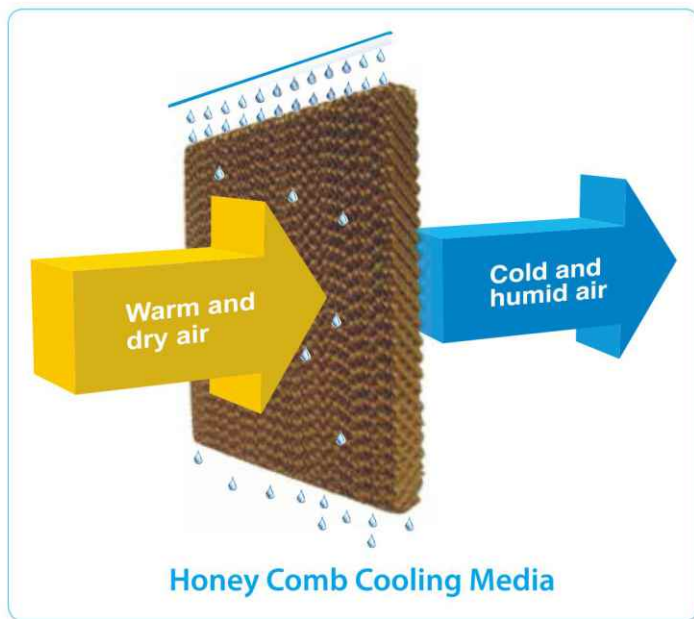
**All specifications mentioned are under test conditions, actual performance depends on ambient condition. Due to our continues endeavour for product improvement, the specifications are subject to change without prior notice

Model: AA10RC

Product dimension (mm)
380 (L) x 333(W) x 728(H)
Carton dimension (mm)
423(L) x 363(W) x 765(H)
NW: 8.2 kg / **GW:** 9.5 kg.



Honey Comb Cooling Media



Ideal for:





AA20RC CHILLER



The AA20RC portable evaporative air cooler are very effective and efficient. They are user friendly with adjustable humidification level and have a full function remote control. The AA20RC evaporative air cooler are super performer, -par excellence- "Air throw" and "Air Flow" of AA20RC are very high.

AA20RC is an evaporative air cooler for comfort in hot weather conditions . It can also be used to humidify dry air .



Specifications and Features



Powerful Air flow
800m³/hour 470 CFM
Cools Up To 28 sq. meter
/301 sq. feet



Power consumption :
200 watts



Honeycomb cooling media
for optimum cooling



Water tank capacity:
20 Liter



Remote control.



3 speeds:
High/Med/Low



Adjustable
humidification level.



1 to 7 hours OFF timer.



Easy mobility.



Oscillating louvers.



Low water alarm.



Top load ice
compartment.



Works on inverter



container qty:
384pcs/40'HQ.

**All specifications mentioned are under test conditions, actual performance depends on ambient condition. Due to our continues endeavour for product improvement, the specifications are subject to change without prior notice



Model: AA20RC



Product dimension (mm)

445(L) x 345(W) x 835(H)

Carton dimension (mm)

498(L) x 400(W) x 892(H)

NW: 10.7 kg / GW: 12.8 kg.



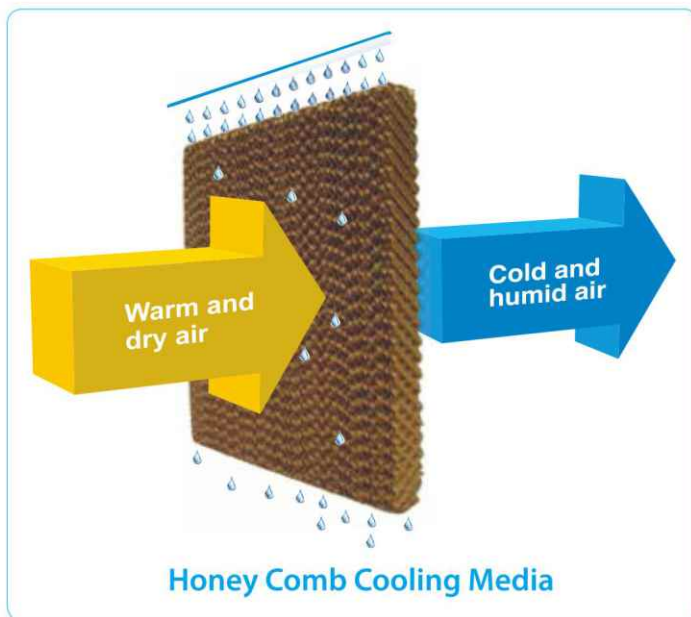
Digital Control
Panel



Remote
Control



Adjustable
humidification level



Ideal for:





AA48PMC WONDER



The AA48PMC is a unique large evaporative air cooler with a massive 48 liter water tank capacity. It is built with three large honeycomb cooling media.

Equipped with a powerful motor, it delivers excellent performance. The Built-in water overflow protection system allows it to be connected to a continuous water supply. Being weatherproof it can be used indoors as well as outdoors. Its mechanical knobs control is user friendly.



Specifications and Features

- Powerful Air flow**
1800m³/hour 1062 CFM
Cools Up To 57 sq. meters /610 sq. feet
- Power consumption :**
140 watts
- 3 side Honeycomb cooling media for optimum cooling**
- Water tank capacity :**
48 Liter
- Oscillating louvers.**
- 3 speeds:**
High/Med/Low
- container qty:**
247 pcs/40'HQ.
- Easy mobility.**
- Works on inverter**
- Continuous water supply connection**

**All specifications mentioned are under test conditions, actual performance depends on ambient condition. Due to our continues endeavour for product improvement, the specifications are subject to change without prior notice

Model: AA48PMC

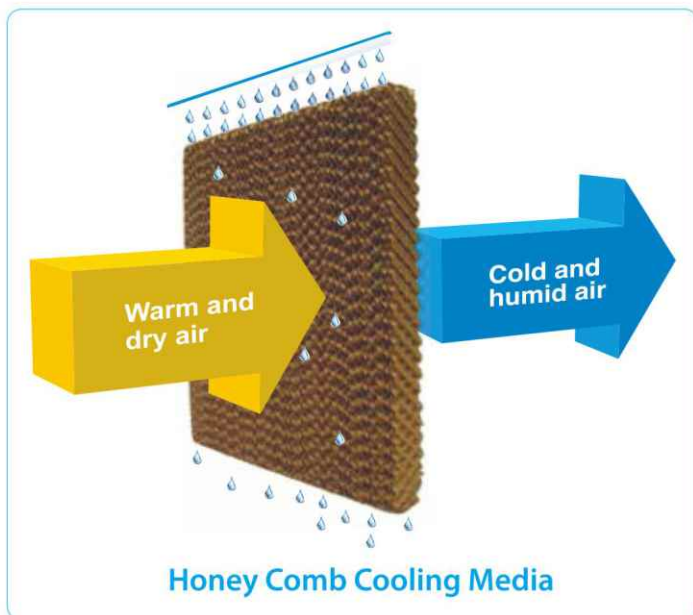
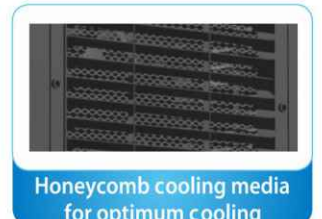
Product dimension (mm)

613 (L) x 375 (W) x 882 (H)

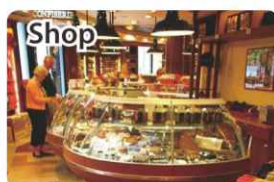
Carton dimension (mm)

660 (L) x 425 (W) x 920 (H)

NW: 13.3 kg / GW: 16 kg.



Ideal for:





AA48PMCO



The AA48PMCO is a unique large evaporative air cooler with a massive 48 liter water tank capacity. It is built with three large honeycomb cooling media.

Equipped with a powerful motor, it delivers excellent performance. The Built-in water overflow protection system allows it to be connected to a continuous water supply. Being weatherproof it can be used indoors as well as outdoors. Its mechanical knobs control is user friendly.



Specifications and Features

- Powerful Air flow
1800m³/hour 1062 CFM
Cools Up To 57 sq. meters /610 sq. feet
- Power consumption :
140 watts
- 3 side Honeycomb cooling media for optimum cooling
- Water tank capacity :
48 Liter
- Oscillating louvers.
- 3 speeds:
High/Med/Low
- container qty:
247 pcs/40'HQ.
- Easy mobility.
- Works on inverter
- Continuous water supply connection

**All specifications mentioned are under test conditions, actual performance depends on ambient condition. Due to our continues endeavour for product improvement, the specifications are subject to change without prior notice

Model: AA48PMCO

Product dimension (mm)

613 (L) x 375 (W) x 882 (H)

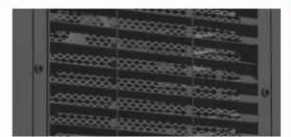
Carton dimension (mm)

660 (L) x 425 (W) x 920 (H)

NW: 13.3 kg / GW: 16 kg.



Adjustable louvers



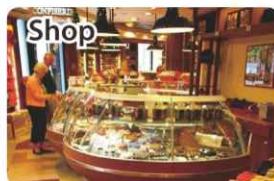
Honeycomb cooling media for optimum cooling

Warm and dry air

Cold and humid air

Honey Comb Cooling Media

Ideal for:





AA60PMC ULTIMATE



The AA60PMC is a unique large evaporative air cooler with a massive 60 liter water tank capacity. It is built with three large honeycomb cooling media.

Equipped with a powerful motor, it delivers excellent performance. The Built-in water overflow protection system allows it to be connected to a continuous water supply. Being weatherproof it can be used indoors as well as outdoors. Its mechanical knobs control is user friendly.



Specifications and Features

- Powerful Air flow
2800m³/hour 1650 CFM
Cools Up To 80 sq. meters /860 sq. feet
- Power consumption : 220 watts
- 3 side Honeycomb cooling media for optimum cooling
- Water tank capacity : 60 Liter
- Oscillating louvers.
- 3 speeds: High/Med/Low
- container qty: 145 pcs/40'HQ.
- Easy mobility.
- Works on inverter
- Continuous water supply connection

**All specifications mentioned are under test conditions, actual performance depends on ambient condition. Due to our continues endeavour for product improvement, the specifications are subject to change without prior notice

Model: AA60PMC

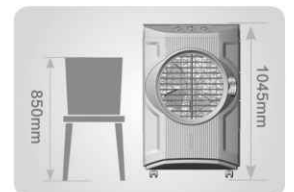
Product dimension (mm)

696(L)x 430(W)x 1045(H)

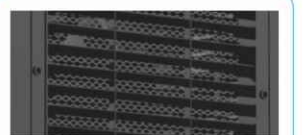
Carton dimension (mm)

755(L) x 520(W) x 1125(H)

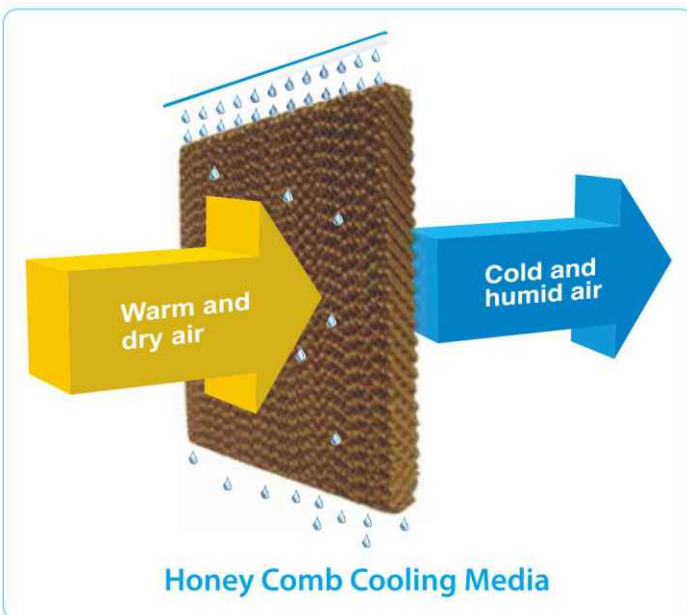
NW: 19 kg / GW: 23 kg.



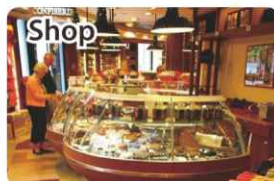
Adjustable louvers



Honeycomb cooling media for optimum cooling



Ideal for:





AA60PMCO CLASSIC



The AA60PMCO is a unique large evaporative air cooler with a massive 60 liter water tank capacity. It is built with three large honeycomb cooling media.

Equipped with a powerful motor, it delivers excellent performance. The Built-in water overflow protection system allows it to be connected to a continuous water supply. Being weatherproof it can be used indoors as well as outdoors. Its mechanical knobs control is user friendly.



Specifications and Features

- Powerful Air flow**
2800m³/hour 1650 CFM
Cools Up To 80 sq. meters /860 sq. feet
- Power consumption :**
220 watts
- 3 side Honeycomb cooling media for optimum cooling**
- Water tank capacity :**
60 Liter
- Oscillating louvers.**
- 3 speeds:**
High/Med/Low
- container qty:**
145 pcs/40'HQ.
- Easy mobility.**
- Works on inverter**
- Continuous water supply connection**

**All specifications mentioned are under test conditions, actual performance depends on ambient condition. Due to our continues endeavour for product improvement, the specifications are subject to change without prior notice

Model: AA60PMCO

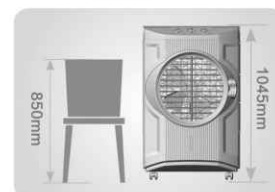
Product dimension (mm)

696(L)x 430(W)x 1045(H)

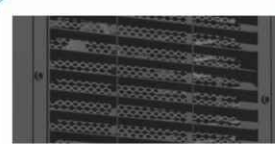
Carton dimension (mm)

755(L) x 520(W) x 1125(H)

NW: 19 kg / GW: 23 kg.



Adjustable louvers



Honeycomb cooling media for optimum cooling

Warm and dry air

Cold and humid air

Honey Comb Cooling Media

Ideal for:



Café/Bar



Outdoor Restaurant



Garage/ Workshop



Party hall



Factory



Garden/Patio



Shop



Shopping Mall/ Showroom



Warehouse



Country Club



AA30RC TWISTER



The AA30RC Twister is all you need to keep your living environment comfortable this summer. Its contemporary design and superb performance make it one of the most popular air coolers in the world. This air cooler is the perfect choice where cooling performance and aesthetics are top requirements.

The redpie TWISTER evaporative air cooler is ideal for cooling medium to large rooms in any home or office. Four fan speeds and oscillation louvers evenly distribute cool air through the double blower and two large honeycomb cooling media. The unit consumes 300 watts of power and includes an automatic shut off timer for even more energy saving.

A user friendly touch control panel and LCD display make operation simple and the remote control lets you operate your cooler from wherever you are. It allows you to roll the unit from room to room.



Specifications and Features

- | | |
|--|-----------------------------------|
| Powerful Air flow
3900m ³ /hour 2295 CFM | Power consumption:
300 watts |
| With Digital
Control Panel | 2 side Honeycomb cooling
media |
| Water tank capacity :
30 Liter | Oscillating louvers |
| 4 speeds:
Strong/High/Med/Low | Full Function
Remote Control |
| Easy mobility | Works on inverter |
| container qty:
223 pcs/40'HQ | With Double Blower |

**All specifications mentioned are under test conditions, actual performance depends on ambient condition. Due to our continues endeavour for product improvement, the specifications are subject to change without prior notice

Model: AA30RC

Product dimension (mm)

500(L)x 370(W)x 1255(H)

Carton dimension (mm)

552(L)x 425(W)x 1310(H)

NW: 18.8 kg / GW: 21.6 kg.



Adjustable louvers



Honeycomb cooling media for optimum cooling

Warm and
dry air

Cold and
humid air

Honey Comb Cooling Media

Ideal for:



Café/Bar



Outdoor
Restaurant



Garage/
Workshop



Party hall



Factory



Garden/Patio



Shop



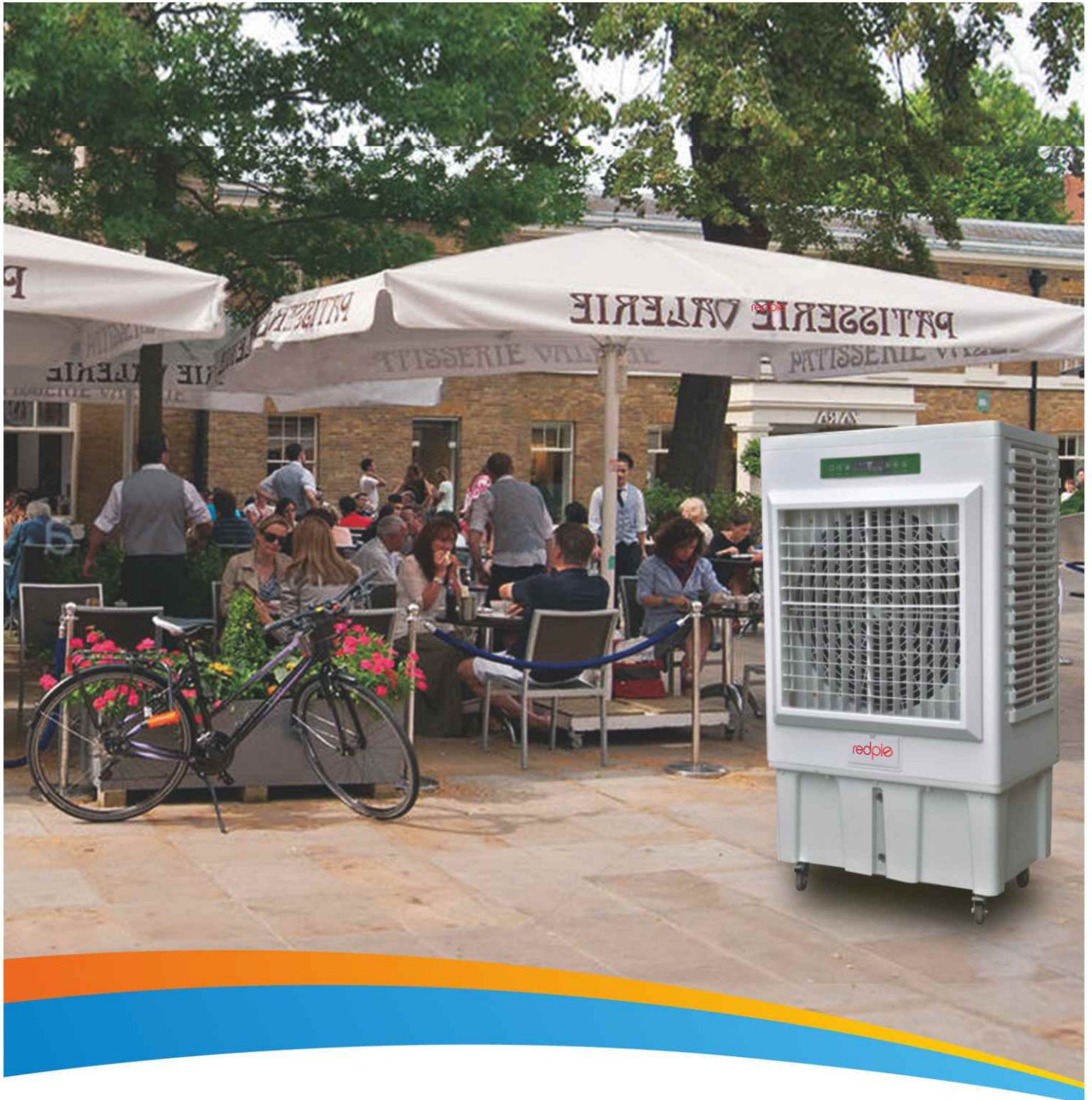
Shopping Mall/
Showroom



Warehouse



Country Club



AA70RC TORNADO



The AA70RC is a unique large evaporative air cooler with a massive 70 liter water tank capacity. It is built with three large honeycomb cooling media.

Equipped with a powerful motor, it delivers excellent performance. The Built-in water overflow protection system allows it to be connected to a continuous water supply. Being weatherproof it can be used indoors as well as outdoors. The unit consumes 350 watts of power and includes an automatic shut off timer for even more energy saving.

A user friendly touch control panel and LCD display make operate simple and the remote control lets you operate your cooler from wherever you are.



Specifications and Features

- | | |
|--|---|
| Powerful Air flow
9000m ³ /hour 306 CFM
Cools up to 175 sq. meter | Power consumption:
350 watts |
| LED
Control Panel | 3 side Honeycomb cooling
media |
| Water tank capacity :
70 Liter | Oscillating louvers |
| 3 speeds:
High/Med/Low | Full Function
Remote Control |
| 1 to 7 hours
OFF timer. | Works on inverter |
| 22" inch fan blade | container qty:50 pcs/20'
and 138 pcs/40'HQ |
| | continuous water
supply connection |

**All specifications mentioned are under test conditions, actual performance depends on ambient condition. Due to our continues endeavour for product improvement, the specifications are subject to change without prior notice

Model: AA70RC

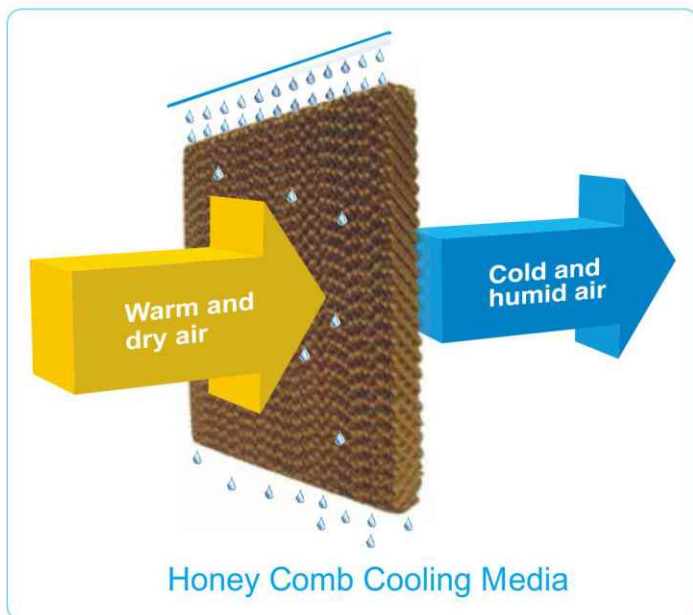
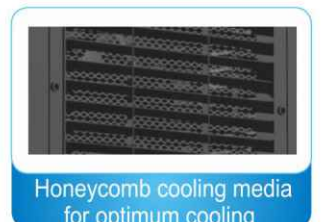
Product dimension (mm)

740(L)x 480(W)x 1270(H)

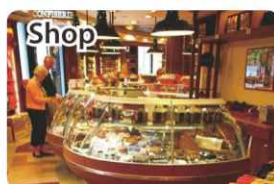
Carton dimension (mm)

750(L)x 510(W)x 1260(H)

NW: 30 kg / GW: 35 kg.



Ideal for:





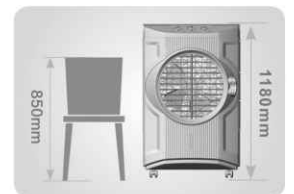
Specifications and Features

- Powerful Air flow**
2800m³/hour 1650 CFM
Cools up to 100 sq. meter
- Power consumption :**
220 watts
- Water tank capacity :**
80 Liter
- 3 side Honeycomb cooling media for optimum cooling**
- 3 speeds:**
High/Med/Low
- Oscillating louvers.**
- Easy mobility.**
- container qty:**
138 pcs/40'HQ
- Continuous water supply connection**
- Works on inverter**

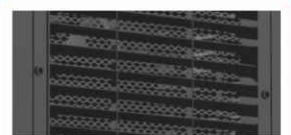
**All specifications mentioned are under test conditions, actual performance depends on ambient condition. Due to our continues endeavour for product improvement, the specifications are subject to change without prior notice

Model: AA80PMC

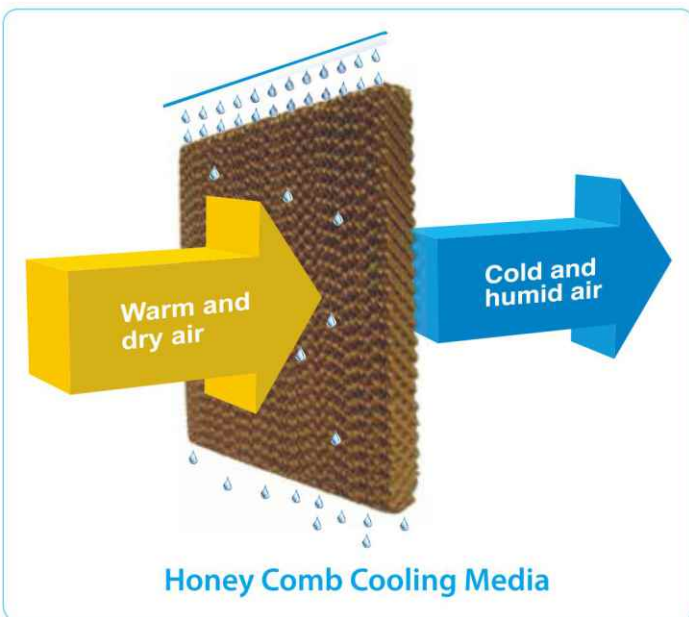
Product dimension (mm)
696(L) x 430(W) x 1180(H)
Carton dimension (mm)
755(L) x 520(W) x 1300(H)
NW: 20.18 kg / GW: 24.5 kg.



Adjustable louvers



Honeycomb cooling media for optimum cooling



Ideal for:





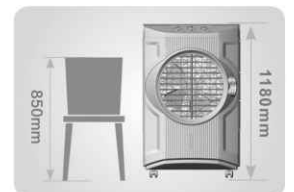
Specifications and Features

- Powerful Air flow**
2800m³/hour 1650 CFM
Cools up to 100 sq. meter
- Power consumption :**
220 watts
- Water tank capacity :**
80 Liter
- 3 side Honeycomb cooling media for optimum cooling**
- 3 speeds:**
High/Med/Low
- Oscillating louvers.**
- Easy mobility.**
- container qty:**
138 pcs/40'HQ
- Continuous water supply connection**
- Works on inverter**

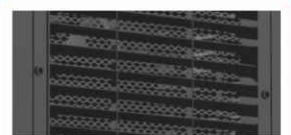
**All specifications mentioned are under test conditions, actual performance depends on ambient condition. Due to our continues endeavour for product improvement, the specifications are subject to change without prior notice

Model: AA80PMC

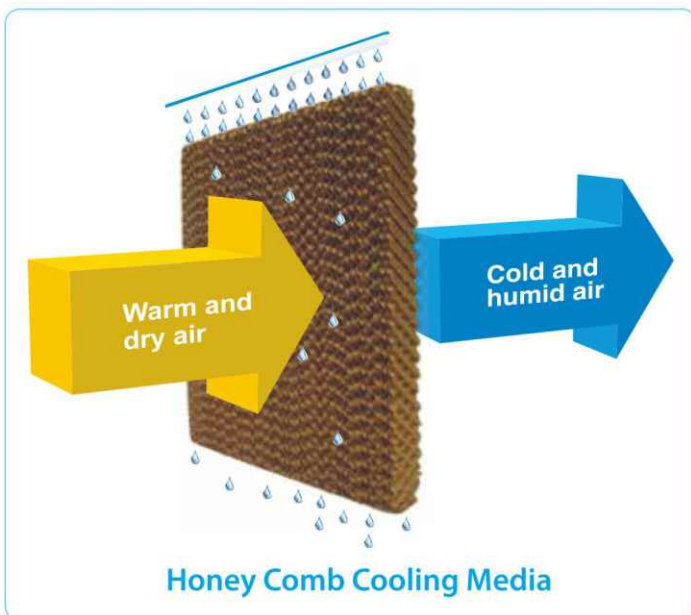
Product dimension (mm)
696(L) x 430(W) x 1180(H)
Carton dimension (mm)
755(L) x 520(W) x 1300(H)
NW: 20.18 kg / GW: 24.5 kg.



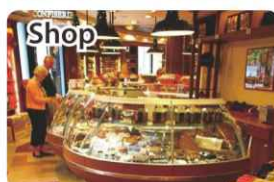
Adjustable louvers
























Honeycomb cooling media for optimum cooling



Ideal for:



Specifications and Features

	 AA8PMC	 SMPLG7	 AA07RC	 AA10RC	 AA20RC	 AA30RC
	Powerful Air flow 480m ³ /hr (282 CFM) Cools Up To 15 sq.meters	Powerful Air flow 460m ³ /hour 270 CFM Cools Up To 16 sq.meters	Powerful Air flow 300m ³ /hour 176 CFM Cools Up To 11 sq.meters /120 sq. feet	Powerful Air flow 510m ³ /hour 300 CFM Cools Up To 16 sq. meters /175 sq. feet	Powerful Air flow 800m ³ /hour 470 CFM Cools Up To 28 sq. meter /301 sq. feet	Powerful Air flow 3900m ³ /hour 2295 CFM Cools Up To 60 sq. meter
 Power consumption	100 watts	70 watts	50 watts	150 watts	200 watts	300 watts
	Honeycomb cooling media for optimum cooling	Honeycomb cooling media for optimum cooling	Honeycomb cooling media for optimum cooling	Honeycomb cooling media for optimum cooling	Honeycomb cooling media for optimum cooling	2 side Honeycomb cooling media
 Water tank capacity	5 Liter	7 Liter	7 Liter	10 Liter	20 Liter	30 Liter
			Remote control	Remote control	Remote control	Full Function Remote Control
	3 speeds: High/Med/Low	3 speeds: High/Med/Low	3 speeds: High/Med/Low	3 speeds: High/Med/Low	3 speeds: High/Med/Low	4 speeds Strong/High/Med/Low
				Adjustable humidification level.	Adjustable humidification level.	
		Detachable water tank for easy cleaning	Detachable water tank for easy cleaning			
			0.5 to 7.5 hours OFF timer	1 to 7 hours OFF timer	1 to 7 hours OFF timer	
 Easy mobility	✓	✓	✓	✓	✓	✓
 Oscillating louvers	✓	✓	✓	✓	✓	✓
 container qty	1006pcs/40'HQ	687 pcs/40'HQ	837 pcs/40'HQ	507 pcs/40'HQ	384pcs/40'HQ	223pcs/40'HQ
 Low water alarm (optional)	✓	✓	✓	✓	✓	✓
 Works on inverter	✓	✓	✓	✓	✓	✓
				Top load ice compartment	Top load ice compartment	

**All specifications mentioned are under test conditions, actual performance depends on ambient condition. Due to our continues endeavour for product improvement, the specifications are subject to change without prior notice

Specifications and Features

	 AA48PMC	 AA48PMCO	 AA60PMC	 AA60PMCO	 AA70RC	 AA80PMC
	Powerful Air flow 1800m ³ /hour 1062 CFM Cools Up To 57 sq.meters /610 sq. feet	Powerful Air flow 1800m ³ /hour 1062 CFM Cools Up To 57 sq.meters /610 sq. feet	Powerful Air flow 2800m ³ /hour 1650 CFM Cools Up To 80 sq.meters /860 sq. feet	Powerful Air flow 2800m ³ /hour 1650 CFM Cools Up To 80 sq.meters /860 sq. feet	Powerful Air flow 9000m ³ /hour 306 CFM Cools up to 175 sq. meter	Powerful Air flow 2800m ³ /hour 1650 CFM Cools up to 100 sq. meter
 Power consumption	140 watts	140 watts	220 watts	220 watts	350 watts	220 watts
	3 side Honeycomb cooling media for optimum cooling	3 side Honeycomb cooling media for optimum cooling	3 side Honeycomb cooling media for optimum cooling	3 side Honeycomb cooling media for optimum cooling	3 side Honeycomb cooling media	3 side Honeycomb cooling media for optimum cooling
 Water tank capacity	48 Liter	48 Liter	60 Liter	60 Liter	70 Liter	80 Liter
					Full Function Remote Control	
	3 speeds: High/Med/Low	3 speeds: High/Med/Low	3 speeds: High/Med/Low	3 speeds: High/Med/Low	3 speeds: High/Med/Low	3 speeds: High/Med/Low
	Continuous water supply connection	Continuous water supply connection	Continuous water supply connection	Continuous water supply connection	Continuous water supply connection	Continuous water supply connection
					1 to 7 hours OFF timer	
 Easy mobility	✓	✓	✓	✓	✓	✓
 Oscillating louvers	✓	✓	✓	✓	✓	✓
 container qty	247 pcs/40'HQ	247 pcs/40'HQ	145pcs/40'HQ	145pcs/40'HQ	50pcs/20' and 138pcs/40'HQ	138 pcs/40'HQ
	continuous water supply connection	continuous water supply connection	continuous water supply connection	continuous water supply connection	continuous water supply connection	continuous water supply connection
 Works on inverter	✓	✓	✓	✓	✓	✓

**All specifications mentioned are under test conditions, actual performance depends on ambient condition. Due to our continuous endeavour for product improvement, the specifications are subject to change without prior notice

BUENO



SMP-CF-001

230V-50HZ

Sweep (mm)	Power (Watt)	Speed (RPM)	Air Delivery (CCM)
1200	65-70	350	210



Color available



BUENO DECO

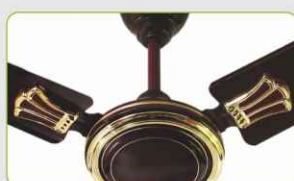


SMP-CF-002

230V-50HZ

Sweep (mm)	Power (Watt)	Speed (RPM)	Air Delivery (CCM)
1200	65-70	350	210

Color available



SPARK

SMP-CF-003

230V-50HZ

Sweep (mm)	Power (Watt)	Speed (RPM)	Air Delivery (CCM)
1200	65-70	350	210



Color available



CLASSIC

SMP-CF-004

230V-50HZ

Sweep (mm)	Power (Watt)	Speed (RPM)	Air Delivery (CCM)
1200	65-70	350	210



Color available



SMP-CF-005

230V-50HZ

Sweep (mm)	Power (Watt)	Speed (RPM)	Air Delivery (CCM)
1200	65-70	350	210



Color available



SAKI



SMP-CF-006

230V-50HZ

Sweep (mm)	Power (Watt)	Speed (RPM)	Air Delivery (CCM)
1200	65-70	350	210



Color available



OPAL

SMP-CF-007

230V-50HZ

Sweep (mm)	Power (Watt)	Speed (RPM)	Air Delivery (CCM)
1200	65-70	350	210



Color available



YOKO

SMP-CF-008

230V-50HZ

Sweep (mm)	Power (Watt)	Speed (RPM)	Air Delivery (CCM)
1200	65-70	350	210



Color available



SMP-CF-009

230V-50HZ

Sweep (mm)	Power (Watt)	Speed (RPM)	Air Delivery (CCM)
1200	65-70	350	210



Color available



OPAL MINI

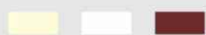


SMP-CF-010

230V-50HZ

Sweep (mm)	Power (Watt)	Speed (RPM)	Air Delivery (CCM)
600	65-70	800-850	210

Color available



RIO MINI

SMP-CF-011

230V-50HZ

Sweep (mm)	Power (Watt)	Speed (RPM)	Air Delivery (CCM)
600	65-70	800-850	210



Color available



NOA SUPER



SMP-DF-001

230V-50HZ

Sweep (mm)	Power (Watt)	Speed (RPM)	Air Delivery (CCM)
1300	55	220	170



HANA



SMP-DF-002

230V-50HZ

Sweep (mm)	Power (Watt)	Speed (RPM)	Air Delivery (CCM)
1300	55	220	170



BRUNO



SMP-DF-003

230V-50HZ

Sweep (mm)	Power (Watt)	Speed (RPM)	Air Delivery (CCM)
1300	65	220	170



Decorative Fan



SMP-DF-005

230V-50HZ

Sweep (mm)	Power (Watt)	Speed (RPM)	Air Delivery (CCM)
1400	65	300	230



Decorative Fan



SMP-DF-005

230V-50HZ

Sweep (mm)	Power (Watt)	Speed (RPM)	Air Delivery (CCM)
1400	65	300	230



Decorative Fan

SMP-DF-006

230V-50HZ



Sweep (mm)	Power (Watt)	Speed (RPM)	Air Delivery (CCM)
1300	65	220	180



CLARA



SMP-DF-007

230V-50HZ

Sweep (mm)	Power (Watt)	Speed (RPM)	Air Delivery (CCM)
1300	55	220	170



CENTURO

SMP-SF-002

230V-50HZ

Sweep (mm)	Power (Watt)	Speed (RPM)	Air Delivery (CCM)
400	60	1350	200

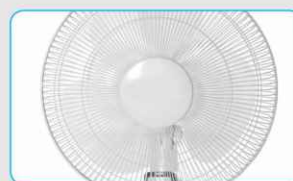


HUBBY

SMP-SF-003

230V-50HZ

Sweep (mm)	Power (Watt)	Speed (RPM)	Air Delivery (CCM)
400	60	1350	200



ANMOL

SMP-SF-005

230V-50HZ

Sweep (mm)	Power (Watt)	Speed (RPM)	Air Delivery (CCM)
400	60	1350	200



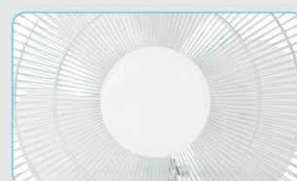
ELENA



SMP-TF-003

230V-50HZ

Sweep (mm)	Power (Watt)	Speed (RPM)	Air Delivery (CCM)
400	60	1350	200



SMP-TF-004

230V-50HZ

Sweep (mm)	Power (Watt)	Speed (RPM)	Air Delivery (CCM)
400	60	1350	200



12" Box Fan



SMP-BF-001

230V-50HZ

Sweep (mm)	Power (Watt)	Speed (RPM)	Air Delivery (CCM)
300	35	1350	200



20" Box Fan

SMP-BF-002

230V-50HZ

Sweep (mm)	Power (Watt)	Speed (RPM)	Air Delivery (CCM)
500	50	1350	200



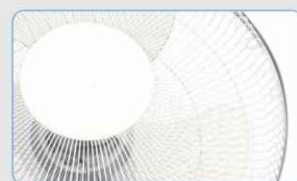
CLOUD S2



SMP-WF-003

230V-50HZ

Sweep (mm)	Power (Watt)	Speed (RPM)	Air Delivery (CCM)
400	60	1350	200



CLOUD

SMP-WF-004

230V-50HZ

Sweep (mm)	Power (Watt)	Speed (RPM)	Air Delivery (CCM)
400	60	1350	200



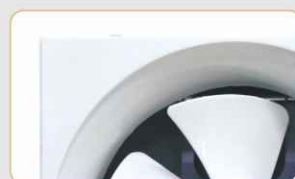
Exhaust Fan



SMP-EF-001

230V-50HZ

Sweep (mm)	Power (Watt)	Speed (RPM)	Air Delivery (CCM)
300	40	1350	200

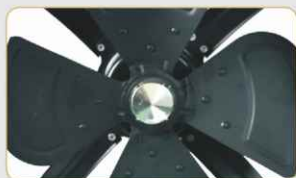
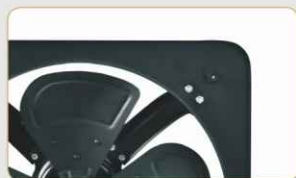


Exhaust Fan

SMP-EF-002

230V-50HZ

Sweep (mm)	Power (Watt)	Speed (RPM)	Air Delivery (CCM)
300	40	1350	200



Exhaust Fan



SMP-EF-003

230V-50HZ

Sweep (mm)	Power (Watt)	Speed (RPM)	Air Delivery (CCM)
300	40	1350	200





Certification :

Chile // Argentina : Bureau Veritas – CESMEC;
Mexico : NOM – ANCE;
Ecuador : INEN"

42" Light Motor 3 Blades



Sweep (mm)	Power (Watt)	Speed (RPM)	Air Delivery (CCM)	Motor weight (kg)	loading quantity (pcs/40HQ 2PCS/CTN)
1050	55	400±10 percent	150	2.1	6462pcs

36" Heavy Motor 3 Blades



Sweep (mm)	Power (Watt)	Speed (RPM)	Air Delivery (CCM)	Motor weight (kg)	loading quantity (pcs/40HQ 2PCS/CTN)
900	55	650±10 percent	180	2.1	8400pcs



56" 5 Blades in Heavy Motor



Sweep (mm)	Power (Watt)	Speed (RPM)	Air Delivery (CCM)	Motor weight (kg)	loading quantity (pcs/40HQ 2PCS/CTN)
1400	85	300	310	5	3200

56" 5 Blades in Light Motor



Sweep (mm)	Power (Watt)	Speed (RPM)	Air Delivery (CCM)	Motor weight (kg)	loading quantity (pcs/40HQ 2PCS/CTN)
1400	80	300	280	4	3200

56" Heavy Motor 3 Blades



Sweep (mm)	Power (Watt)	Speed (RPM)	Air Delivery (CCM)	Motor weight (kg)	loading quantity (pcs/40HQ 1PCS/CTN)
1400	70	300	250	3.2	2100

56" Heavy Motor 3 Blades



Sweep (mm)	Power (Watt)	Speed (RPM)	Air Delivery (CCM)	Motor weight (kg)	loading quantity (pcs/40HQ 1PCS/CTN)
1400	70	300	250	3.2	1750

56" Light Motor 3 Blades



Sweep (mm)	Power (Watt)	Speed (RPM)	Air Delivery (CCM)	Motor weight (kg)	loading quantity (pcs/40HQ 1PCS/CTN)
1370	65	300±10 percent	220	2.4	2649

56" Light Motor 3 Blades



Sweep (mm)	Power (Watt)	Speed (RPM)	Air Delivery (CCM)	Motor weight (kg)	loading quantity (pcs/40HQ 1PCS/CTN)
1376	65	300±10 percent	210	2.4	2649

56" CEILING FAN



Sweep (mm)	Power (Watt)	Speed (RPM)	Air Delivery (CCM)	Motor weight (kg)	loading quantity (pcs/40HQ 3PCS/CTN)
1400	70	290-300±10	250	4.5	3600

56" CEILING FAN



Sweep (mm)	Power (Watt)	Speed (RPM)	Air Delivery (CCM)	Motor weight (kg)	loading quantity (pcs/40HQ 3PCS/CTN)
1400	70	290-300±10	250	4.5	3600

Energy Efficient

Vibration Free

Copper Wire Motor

Comfortable

Speeds Control
Speed:1400rpm

Adjustment Height



Tornado



Deluxe



Force

Heavy Duty Farratta Heavy Duty Motor and Heavy Duty Base

Specifications:

Tornado 22" high velocity	Five fin aluminium blade	full balance blade
Force 22" high velocity	Three fin aluminium blade	full balance blade
Deluxe 20" high velocity	Three fin plastic blade	full balance blade

SMP International Limited

Unit 1607, APEC Plaza 49 Hoi Yuen Road Kwun Tong Kowloon

T: (852) 5169 0220

E: sales@smpredpie.com

China

SMP International Ltd



Room 1110, Kerry Center
No. 2008 Renmin South Road,
Luohu, Shenzhen, China
T: 86-755 33118225
F: 86-755-26050265

India

SMP India

C-83 Ashok Vihar,
Alwar-301001 Rajasthan, India
Toll Free No: 18002704344
E: sales@smpredpie.com

Chile

SMP Chile

Mac-Iver 484 of 54 Santiago
Centro. Santiago, Chile
Contact: Mr Rajat Sharma
T: (56)-2-6339213
E: rajat@smpredpie.com

Peru

SMP Peru

Av. Pedro Venturo 218. Int. 246.
Santiago de Surco Lima-Peru
Contact: Mr Gustavo Raez
T: (511) 2684287
M: (51) 964238491
E: peru@smpredpie.com

Dubai

SMP Dubai

Ali Hassan Ali Building, 4F,
Flat 47 Abu Shagara,
Sharjah , UAE
E: dubai@smpredpie.com

Australia

SMP Australia

10/1, Bradley Place Liberty
Grove, NSW-2138 Sydney,
Australia
Contact: Mr Manmohan Sharma
T: (61) 4 08612118
E: manmohan@smpredpie.com

New Zealand

SMP NZ

280 Great South Road, Green
Lane Auckland 1051
New Zealand
Contact: Mr Manmohan Sharma
E: smpnz@smpredpie.com