



COLON

LOGISTICS CENTER



A World Class Business Park Environment



The US dollar as a circulating currency.



Less taxes and more opportunities for investors.



Airport for passengers and cargo close to the Free Zone.

* Some of the more than 3,000 established brands and companies operating out of the Colon Free





CBRE Panamá

Tom LaPierre
Industrial Services Manager
C+ (507) 6362 1106
tlapierre@cbre.com.pa

Adrian Diez
Retail & Land Services Manager
C+ (507) 6618 0688
adiez@cbre.com.pa

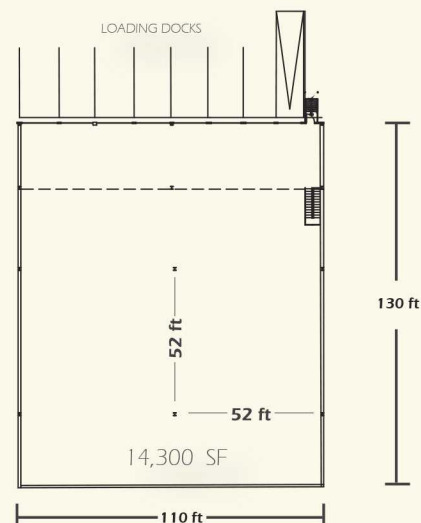
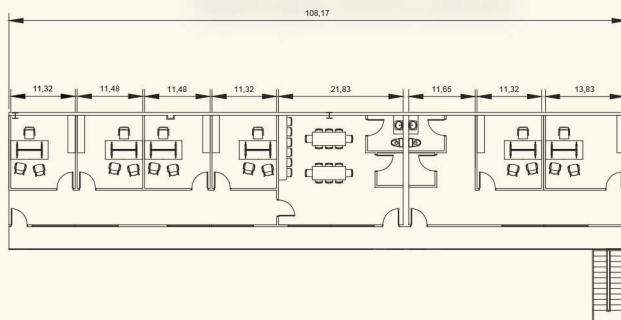
Flexible Fulfillment Centers

Designed to Suit a Variety of Logistics Needs

17,000 SQUARE FOOT CONFIGURATION

- * 7 LOADING DOCKS
- * OFFICES FROM 150 SF UP TO 2,700 SF

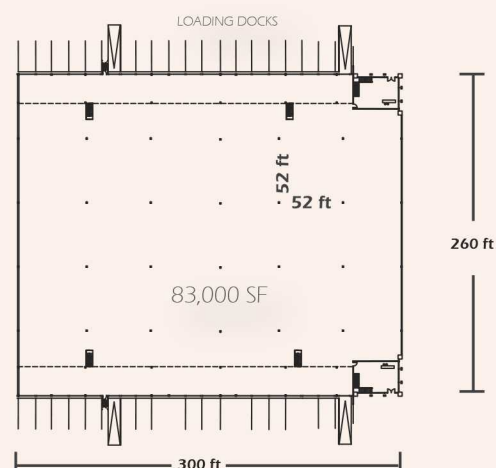
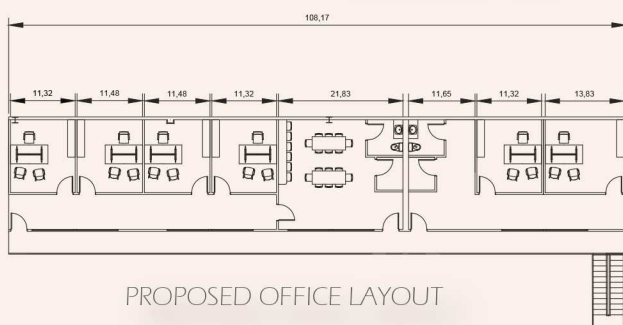
PROPOSED OFFICE LAYOUT



101,000 SQUARE FOOT CONFIGURATION

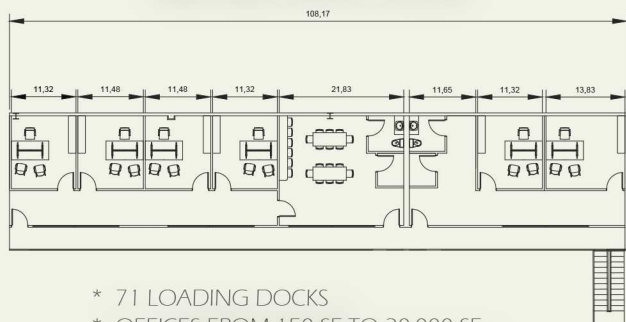
- * 36 LOADING DOCKS
- * OFFICES FROM 150 SF UP TO 18,000 SF

PROPOSED OFFICE LAYOUT

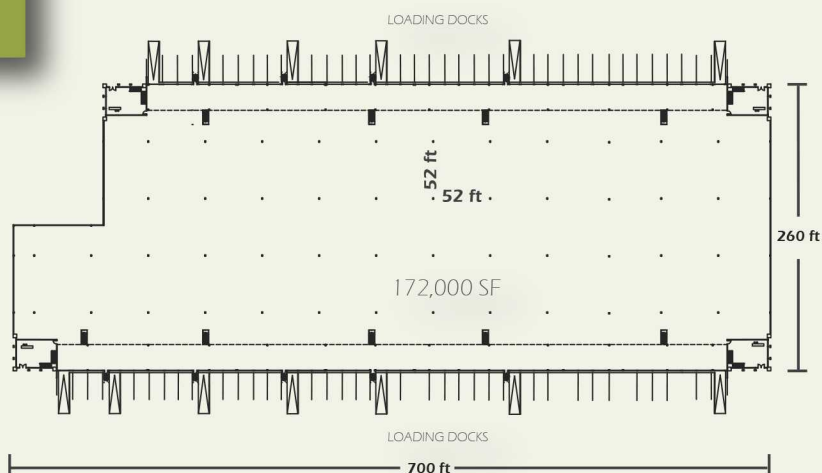


202,000 SQUARE FOOT CONFIGURATION

PROPOSED OFFICE LAYOUT



- * 71 LOADING DOCKS
- * OFFICES FROM 150 SF TO 30,000 SF



Project Overview

Impeccable Design Elements



* Photographs and renders are for illustration purposes only. Final design and layout may vary as per client specifications.



World-Class Building Specifications

- | | |
|--|--|
| Total Construction Area: 202,000 SF | ▶▶ Slab Load Capacity of 3,500 Kg/m ² |
| 134 Parking Spaces | ▶▶ High Speed Internet Connectivity |
| Built-in Ventilation System for Improved Circulation and Temperature | ▶▶ Back Up Generator Guarantees 24/7 Performance |
| Skylight Roofing for More Efficient Lighting and Energy Usage | ▶▶ On Site Security |
| Fire Sprinklers | ▶▶ 36' Ceiling Clearance |
| Emergency Exits | ▶▶ Minimum Column Spacing of 52' |

Panama

Where The World Meets



Panama's General Facts

Capital: Panama City.

Area: 75,517 square km.

Population: 4,037,043 (July 2016).

- › Government: Constitutional Democracy
- › Inflation: 0.5% (by August 2016).
- › GDP Per Capita: \$13,268 (2015).
- › Currency: US Dollar since 1904.
- › Language: Spanish (official), English (commercial).



Maritime Routes

The newly expanded Panama Canal is transforming global trade patterns and maritime routes, with Panama at the center of this transcendental change.



Best connected country in the continent: 144 maritime routes to 1700 ports in 160 countries. Top ports in Latin America on both Atlantic and Pacific oceans moving more than 7 million containers per year. # 5 in the world for its quality of port infrastructure.

- Panama is the node for:
- › 100% regional Internet traffic.
 - › 97% international voice traffic.
 - › 90% electronic data transmission.
 - # 8 in the world for mobile phone subscriptions /100 hab.



Telecom Connectivity

Panama is the continental link of 7 submarine fiber optic cables providing virtually unlimited bandwidth.



Air Routes

Panama's air connectivity is unparalleled in Latin America, with the best connected airport with more than 110,000 international direct flights

Flights to more than 80 destinations, all major cities and capitals in the continent, and reaching Europe and beyond. # 6 in the world for airport infrastructure quality. *

*Source: World Economic Forum, Global Competitiveness Index 2016-2017

The Colon Free Zone

Unparalleled Investment Incentives



The Colon Free Trade Zone (CFZ) is the main distribution center of the Western Hemisphere and the second largest in the world after Hong Kong. All routes in the world lead to the CFZ, which is located at the Caribbean entrance of the Panama Canal. It was established in 1948, and occupies more than 700 acres of businesses and warehouses.



Some of the advantages it offers are:



Notes

