



Shizen
自然

Collection
fall / winter 2018

by
N + 5 T T
- Morning & late night -



Umi
(agua)

by
+5



Umi
(agua)

by
+5



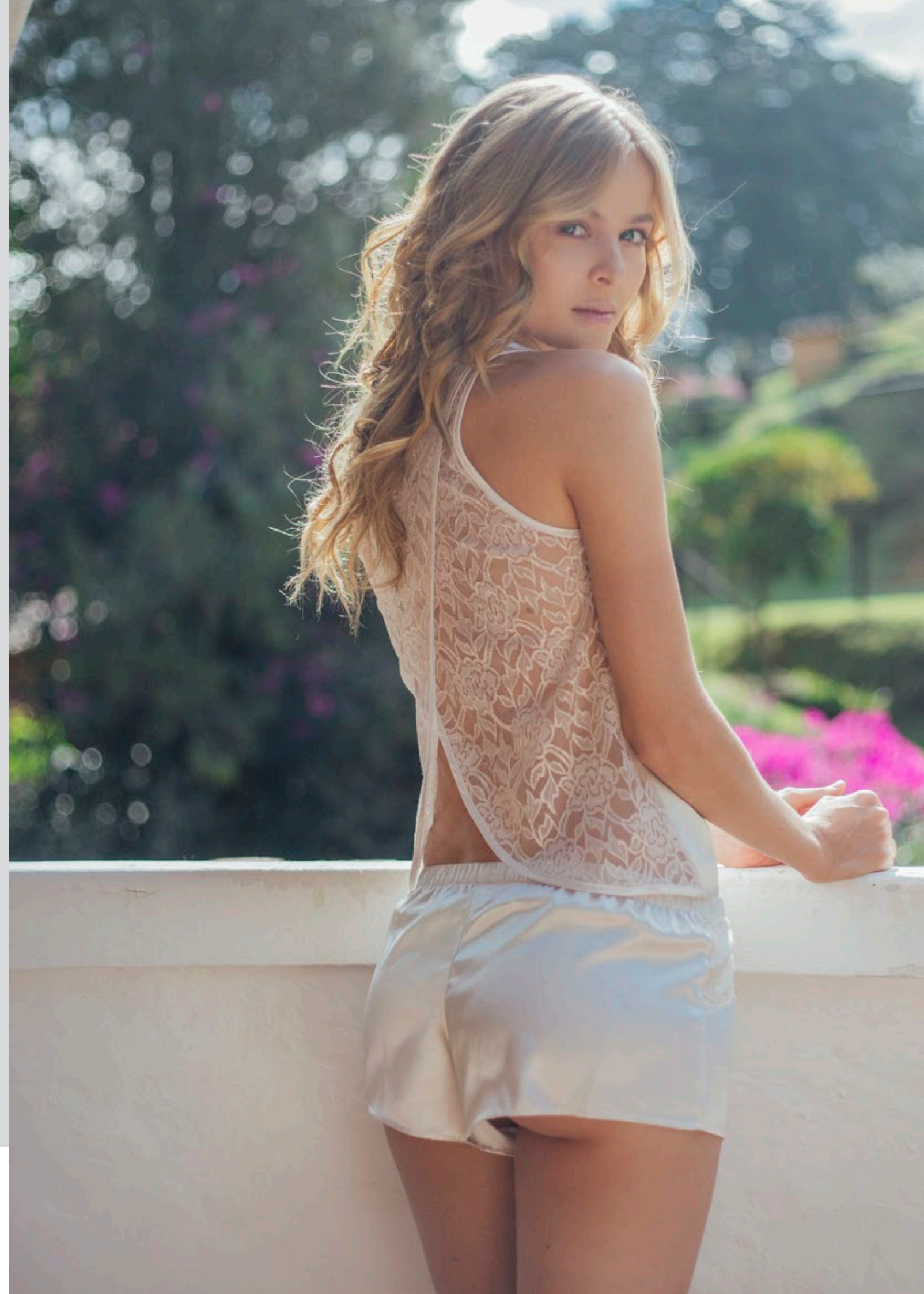
Umi
(agua)

by
+ 5



Hydra

by
+5



Hydra

by
+5



Hydra

by
+5



Ame
(lluvia)

by
+5



Mizu
(el agua)

by
+ 5



Mizu
(el agua)

by
+5



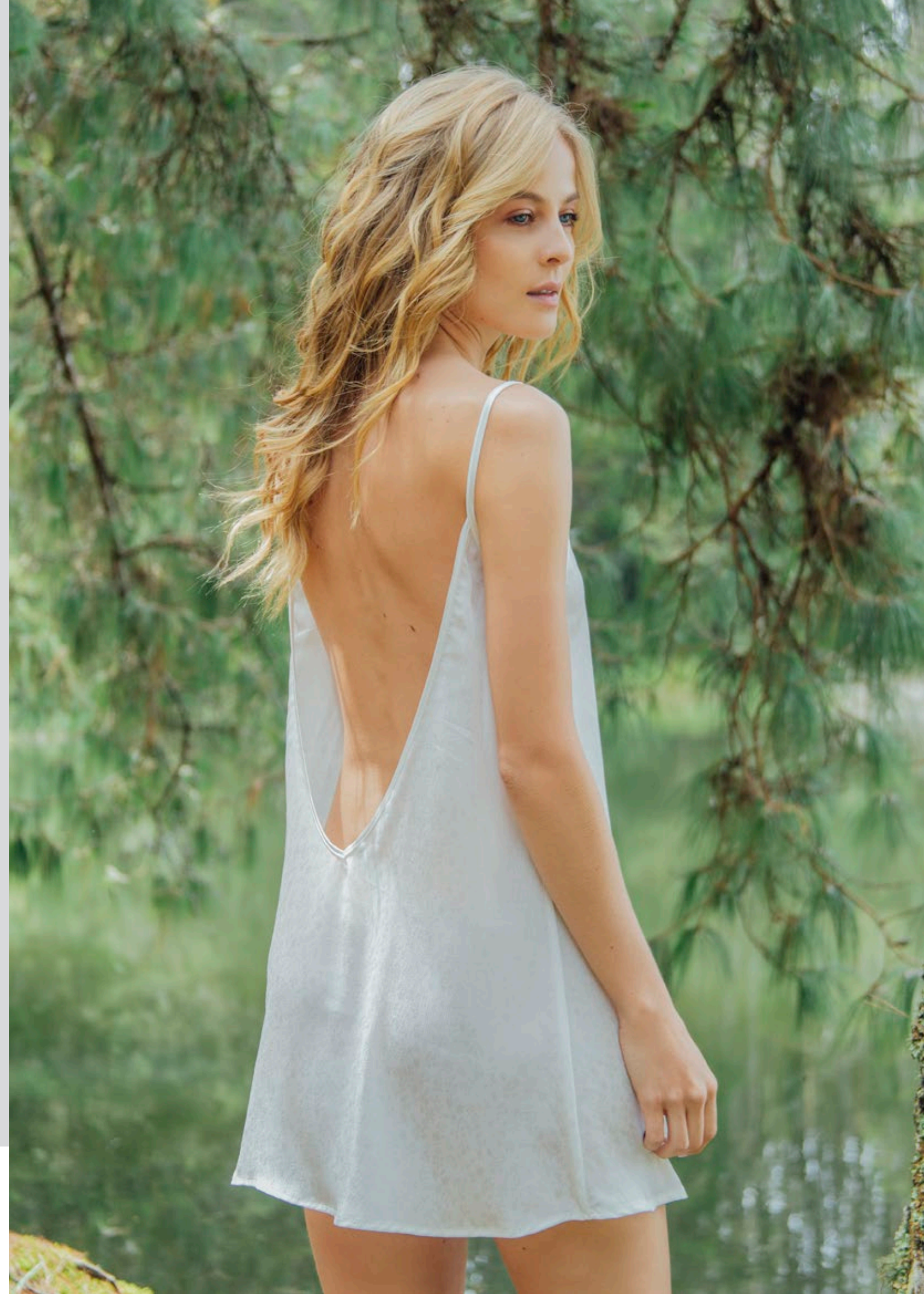
Ara

by
+5



Suki
(luna)

by
+5



Suki
(luna)

by
+5



Kaji
(fuego)

by
+5



Kaji
(fuego)

by
+5



Kaji
(fuego)

by
+5



Shia
(marea)

by
+5



Kawa
(rio)

by
+5



Kawa
(rio)

by
+5



Kawa
(rio)

by
+5



Tami
(valle)

by
+5



Nami
(ola)

by
+5



Nami
(ola)

by
+5



signature piece

Hel

by
+5





signature piece

Hel

by
+ 5





signature piece

Loki

by
+5





signature piece

Loki

by
+5





signature piece

Gard

by
+5

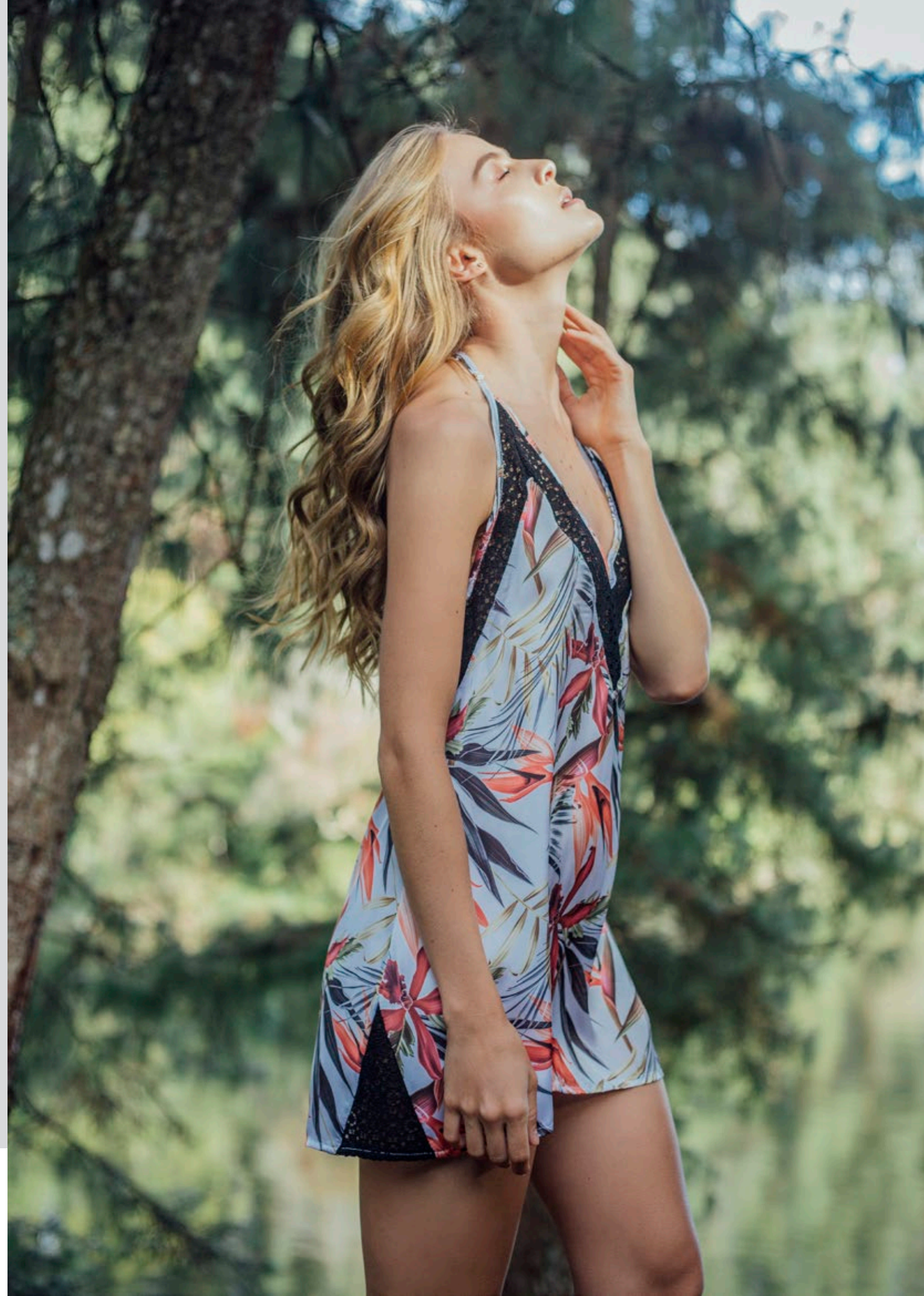




signature piece

Freyja

by
+5





signature piece

Freyja

by
+5



Collection
fall / winter 2018

Made with love. From Medellín, Colombia.

by
N + 5 T T

- Morning & late night -