



LUCUS

sacred forest

Vereda Morro Plancho
 SANTA BÁRBARA -
 ANTIOQUIA-COLOMBIA
 055057

In the middle basin of the Cauca River (Antioquia-Colombia), our forests were transformed into coffee monocrops. Colombia

is estimated to have 34% of its land suitable for food cultivation, with a large portion of the rural population residing on

the hillsides of the three mountain ranges. Is monocrop truly a viable option in this context?

Our Solution: Regenerative Agriculture

At Café Lucus, we address these profound challenges by proposing a social and environmental model that goes beyond mere coffee production. Through a deliberate process of RE: rethink, remake, recover, review, and revisit, we've transformed traditional farming into a beacon of sustainability and resilience. This collective journey has been built on patience, continuous study, careful observation, shared learning, and persistent experimentation.

Tangible Impact and Future Vision

We are already witnessing a tangible positive impact on our ecosystem. The positive spiral has begun, and its effects are radiating throughout our village. Our three complementary strategies—'Hacer Bosque' (Building a Forest), with over 1,700 trees planted; 'Nidos Veredas Literarias', with three active little libraries; and 'Ladera Lab', which has developed three innovative products from coffee and forest by-products—are central to this transformation.

Curiosity fuels our Ladera Lab, driving us to explore new forest products and coffee derivatives. This curiosity keeps us vibrant and proactive in seeking solutions and discovering opportunities within nature's abundance. This ongoing dialogue underscores that the conversation about the future is happening now. We are actively building the place where we want to live as a territory, and in this process, we are not alone; we are a united community.

Our Impact Over 3 Years

In 2021, we decided to put our hands to the earth, arriving at a monoculture-impacted site in the Cauca River's middle basin. These three years have clearly demonstrated the resilience and creative capacity of regenerative agriculture. Over the next three years, we aim to expand our sphere of action to other hamlets in Santa Bárbara. This includes planting over 5,000 native trees through 'Hacer Bosque' and ensuring that 'Nidos Veredas Literarias' and 'Ladera Lab' are no longer isolated initiatives. Our goal is to create an archipelago of interconnected conversations that tap into the immense potential of our farming community.



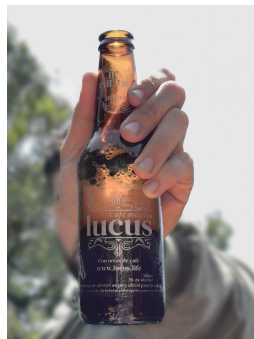
Cold brew



Organic Coffee



Artisan beer



Mead



hacer BOSQUE

+1700 trees planted



nido

veredas literarias

3 small libraries



Want to know more about us?

info@lucus.life

Instagram: [@cafe_lucus](https://www.instagram.com/cafe_lucus)

www.lucus.life

Whatsapp: [+573014062735](https://wa.me/573014062735)



