



Market Presentation
2022



**Getting together is a
beginning, staying
together is progress and
working together is a
success.**

NAPOLEON HILL

Story

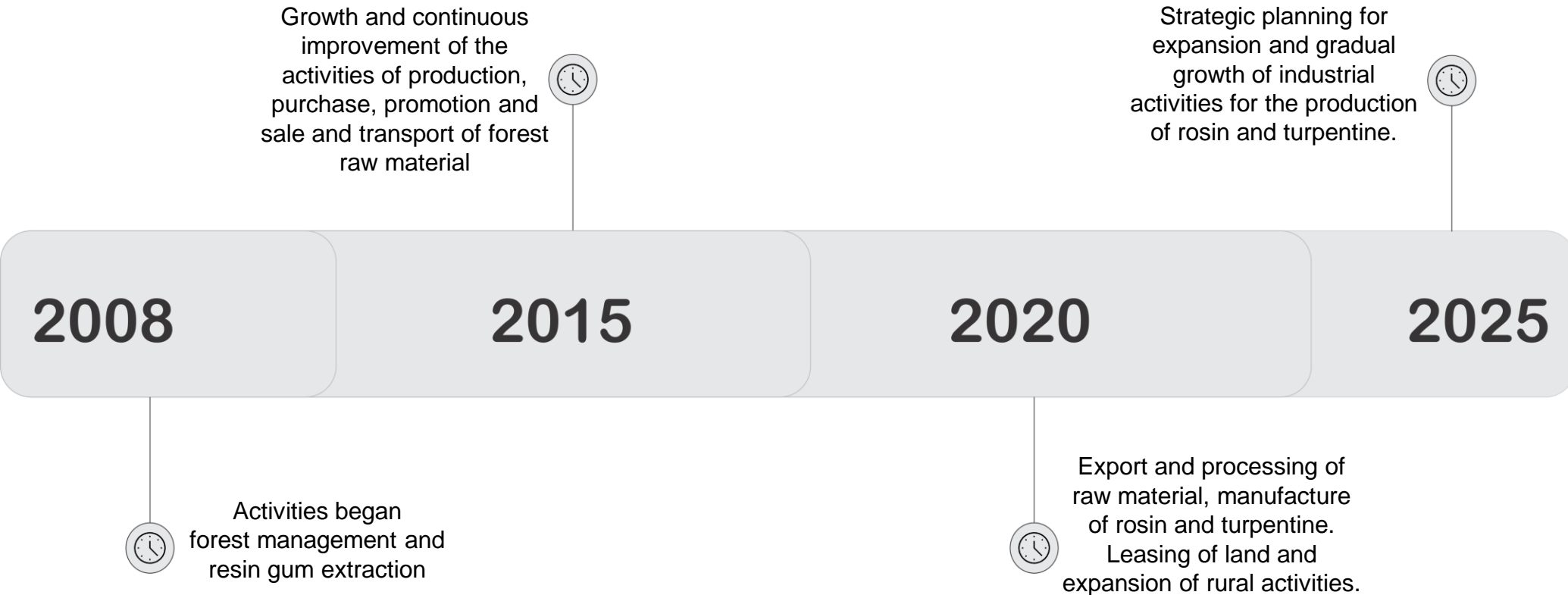
Resinas Jardim started because of the dream of 2 young cousins whose personal goal was to achieve their financial independence and sustainable growth.

Starting in a humble and honest way, growing little by little with the sweat of his work, gaining confidence and recognition from the population.

Over the years the company has grown and its dreams come true, living up to all its efforts.



Performance and Development History



Mission

Add value to our customers, employees and society.

Vision

Offer great quality, natural and sustainable products serving our customers and friends in the best possible way.

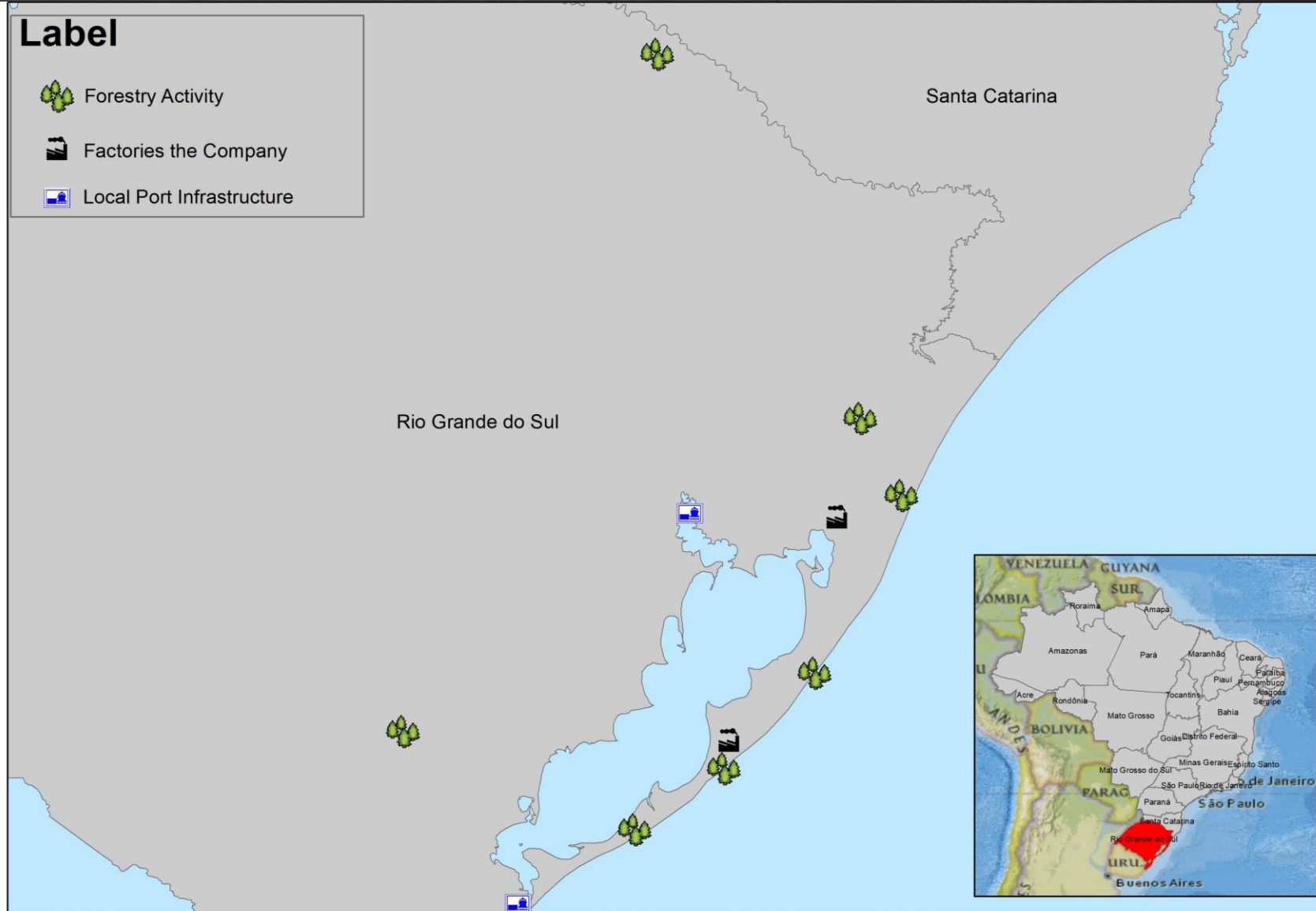




Location

Label

-  Forestry Activity
-  Factories the Company
-  Local Port Infrastructure





Our products

Gum Rosin: is a transparent yellow solid, produced from resinous pine secretions. It is composed of abietic acid (the main component) and is used for product applications such as glues, adhesives, soaps, enamels, electrical insulators, chewing gum, waxes and expectorants.

Applications: printing inks, paper glue, adhesives, emulsifiers, rubbers and other segments, including cosmetics, soaps, detergents and food industries such as chewing gum.

Turpentine: the type of turpentine obtained at RJ is gum resin. Turpentine is a clear liquid with a characteristic odor and bitter taste. It is used as a solvent in paints and varnishes, in the manufacture of dyes, waxes, disinfectants (pine oil), camphor, soaps, insecticidal greases, sealants, perfume fixatives, among others.

Applications: as it is composed of aromatic cyclics, turpentine is used as a raw material for the industrialization of a large number of products such as terpenyl acetate, isobornyl, terpineol that are used in the fragrance and perfumery industry. The “pine” disinfectants that have germicidal action take in their formulation, pine oil from the industrialization of turpentine. In the fine chemical industry, turpentine is used for vitamins, natural insecticidal components, resins for special glues, among others. Its use extends as solvents for special paints, as well as in the pharmaceutical field.

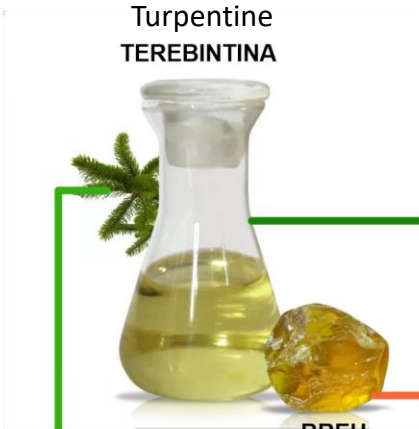


Applications



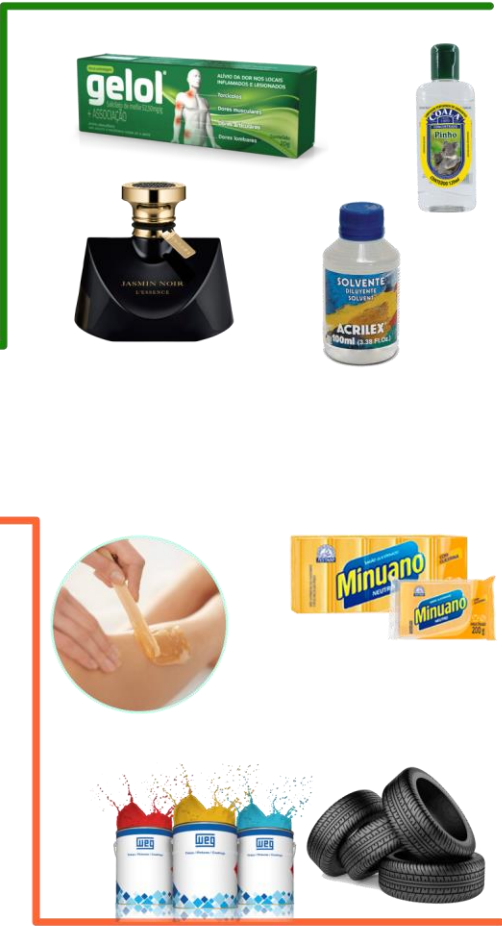
PINUS
ELLIOTTII

GOMA Resin
RESINA



Turpentine
TEREBINTINA

BREU
Gum Rosin





Helps save 50,000 barrels of gasoline a day (through activated carbon), which is cost-effective for drivers and good for the environment

Used as an adhesive
in bandages and other
medical products

PARTICLE BOARD WATER PURIFICATION ENVIRONMENTAL AGENT



Forest Production

The forestry activity developed by Resinas Jardim aims at the production and resin gum in natura through the management of the species *Pinus elliottii*. Conventional techniques of striae and closed system, bodyhole are used, whose main differential is in the purity of the final product obtained, being of great attractiveness in the production of rosin and turpentine with high quality content.







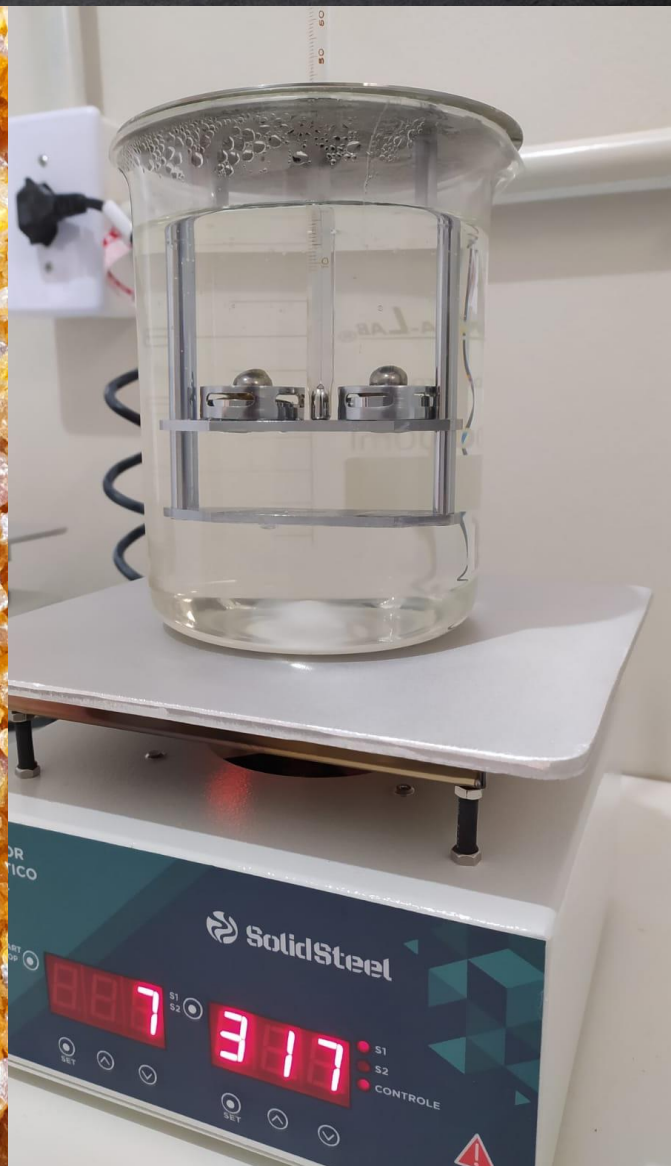
Industrial production

The Company has a factory production system for processing gum resin and consequently obtaining rosin and turpentine.

Actions are planned and being carried out to permanently increase the productive capacity of the factory with a focus on the customer and guarantee of the quality of its products.









Rural Lease

The incentive for rural development and regional social growth is fostered by Resinas Jardim through actions to lease land and implement forestry activities, aiming at guaranteeing the supply of raw material and consequent generation and dividends between the parties.





Transport

Resinas Jardim has its own transportation system, carried out through partnerships, which contemplates the flow of products from the middle coast of RS, also covering regions of the state of Santa Catarina and Paraná.







Export

Aiming at serving manufacturers abroad, the Company carries out export processes for raw resin gum. The entire packaging, cargo formation and shipping procedure strictly follows the standards necessary to meet phytosanitary, environmental and quality requirements.





TEREBINTINA
Gaúcha

Contato: 51 998359421
Terebintina Destilada
1 litro



Legal compliance and preservation of the environment are fundamental pillars that support the various work fronts in the Company. The reverse logistics of packaging, recycling and plastic recovery, as well as the development of projects to maintain licenses, are examples of actions aimed mainly at the sustainability of the business.





resinas Jardim