



adhesives

ADHERENCE IMPROVERS

adirres
unires n
unirres nc universal
unitais

INSULATION

apois
plasto2
peganel

GLASS BLOCK

morvi

TILE ADHESIVES

cecois fraguado rápido
cecois térmico AT
cecois
cecois piscinas super blanco
cecois porcelanato
cecoisflex

CONCRETE

epoais 10
epoais INY

CARBON FIBER

epoais carbono

METALS

epoais h

NON-POROUS SUPPORTS

cecois epoflex

ROOF TILES

colte

STONES

adhpi
unipis

PLASTICS

contactis aqua

ELASTIC AND WATERPROOF

lastois bond

Learn more about our full range of products
<https://www.teais.es>

bonding agent for surfaces with low adherence

adirres

Adirres is a product that comes in paint form.

Bonding agent to apply on supports with low adhesion. Its use allows the application on ceramic surfaces both walls and floors for subsequent application of claddings, levelling pastes, cement-base adhesives, etc.

It's recommended for floor due to haven't a permanent taking, it allow to be able to walk on it once dry.

Packaging: 0,75 l, 4 l, 16 l
Consumption: until 4 sqm/l



adherence improvers

adherence improver agent for surfaces with low adherence

unirres - N

Unirres-N is a dispersion of water-based acrylic copolymers, and special additives that is applied as a paint on the supports where a better adherence is required

Unirres-N is a suitable resin for improving the adherence between claddings and surfaces with low adherence such as expanded polystyrene, extruded polystyrene, wood, etc.

For making cement-based mortars on concrete supports or existing mortar as an adherence improver. Union abutments with walls, mortar improver additive. Suitable for cement mortar, plaster or plasterboard. It can be used on various supports such as concrete, mortar, brick, stone, artificial stone, cement, polystyrene, wood.

Packaging: 1 l, 5 l, 25 l
Consumption: 4 to 5 sqm/l



adherence improvers

unirres - NC universal

universal adherence improver agent which doesn't produce corrosion on metals



Unirres-NC is a resin based on polymers which is used to improve the adherence of mortars on metallic, wooden, mortars, paints, etc avoiding corrosive processes.

The product is applied to obtain a suitable adherence between supports mainly metallic, wooden surfaces, paints and cement-based mortars, lime or gypsum.



*Packaging: 1 l, 5 l, 25 l
Consumption: 4 to 5 sqm/l*

unitais

adherence improver agent



Unitais is a powder product with cement-based formulation, charges and additives which can be used mixed with water or powder according the type of application.

It is used as an improver of adherence on screeds of concrete. As improver of adherence in the joints between concrete and concrete-walls which are not made in once stage.



*Packaging: 25 kg
Consumption: 1,5 to 2,5 kg/sqm according use*

powder adhesive for polystyrene sheets and rock wool

apois

Apois is a powder adhesive, when mixed with water, it forms a mortar specially designed for sticking and smoothing expanded polystyrene sheets and rock wool to construction supports. It is suitable for External Wall Thermal Insulation System

Ideal for joining polystyrene foam or rock wool to construction supports, on concrete walls, brick partition walls, renders, filled walls with mortars and all the surfaces that require insulation.

To install ETICS system.

Packaging: 25 kg

Consumption: 3,0 kg/sqm on 2mm thickness



insulation

plastic water-based mortar

plasto 2

Plasto-2 is a plaster or mortar with extraordinary plasticity, which is suitable for regularization layers onto expanded and extruded polystyrene surfaces, as well as adhesive for these materials, with traditional building holders.

It is suitable as an adhesive layer for Integrais (polystyrene sheets) in thermal and acoustic insulation systems placed onto concrete, cement plaster, asbestos cement, etc.

The product can be applied both indoors and outdoors.

Packaging: 25 kg

Consumption: 3,0 kg/m² on 2mm thickness



insulation

peganel

special cement-based adhesive for fixing thermal insulation panels.



Peganel is an adhesive with waterproofing properties special for fixing of insulation panels based on glass wool or other mineral wools.

It is used for fixing glass wool and other mineral wools on brick supports, concrete blocks, claddings, etc.

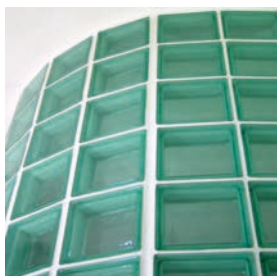
The fixing with PEGANEL ensure waterproofing protection against thermal insulation keeping the waterproofing, avoiding condensations.



Packaging: 25 kg
Consumption: 6 to 8 kg/sqm

morvi

special mortar for placing glass paving block



Morvi is a powder product to be prepared with water. He is formulated in base of modified cement with special resins and thin aggregates specially selected. Once it is blended with water becomes in a thixotropic paste. Ideal for the placement of glazed blocks.

For installing glass blocks so as to provide flexibility, waterproofing and resistance to changes in temperature.

The product can be used in interiors and exteriors. It is recommended to use the synthetic reinforcing structure ARMASIN for exterior applications. It is mortar characterised for its waterproofing property.

Packaging: 5 kg, 25 kg
Consumption: 15 kg/m² with joint of 1 cm



fast setting-time adhesive for laying bricks, tiles and ceramics

cecois
fraguado rápido

Cecois Fraguado Rápido is a fast setting-time powder cement-based adhesive formulated in base of modified cement with special additives and fine aggregates with selected particle-size.

It is suitable for laying bricks, tiles, ceramics, marble, glazed, etc. In kitchens, bathrooms, toilets, laboratories, hospitals, etc. Placement of tiles and slate and sloped roofs.

Both indoors and outdoors.

Recommended for uses that require quick setup.

Packaging: 1,5 kg , 25 kg

Consumption: 3,0 kg/sqm on 2mm thickness



tile adhesives

adhesive for temperatures up to 300°C

cecois
término AT

Cecois Térmico AT is a special adhesive for the installation of claddings (tiles, stone) in areas that are exposed to heat, such as chimneys, stoves, areas close to an oven, etc.

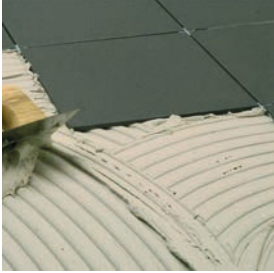
The product is a ready-to-use paste.

Packaging: 25 kg

Consumption: 3,0 to 5,0 kg/sqm according use



tile adhesives

cecois**tile adhesive for laying tiles, ceramic tiles and ceramics**

Cecois is a powder cement-based adhesive, formulated in base on cement modified with special additives and selected fine aggregates. Cecois must be mixed with clean water in the recommended proportion and is used for sticking tiles, platelets, ceramics, etc.

Type C1 T according to UNE-EN 12004

it can be used in laying tiles, platelets, ceramic tiles, marble, etc., in kitchens, bathrooms, toilets, laboratories, hospitals, etc. Both indoors and outdoors. To fix tiles, slates, etc. in pitched roofs.



Packaging: 1 kg, 5kg and 25 kg
Consumption: 3,0 kg/sqm on 2mm thickness

cecois piscinas superblanco**adhesive for ceramic tiles on pools**

Cecois Piscinas Super Blanco is cement-based adhesive, polymers, special additives and aggregates with selected grading.

The adhesive is mixed with water and is used for laying tiles on pools and it is used as a grout both for ceramic or mosaics.



Packaging: 25 kg
Consumption: 3,0 kg/sqm on 2mm thickness

adhesive for laying tiles and mosaics

cecois porcelanato

Cecois Porcelanato is a glue cement presented in powder based on modified cement with special resins and specially selected thin aggregates.

Type C1 T E according to UNE-EN 12004

Cecois Porcelanato is designed to present an excellent grip with low absorption pieces as porcelain stoneware or ceramic pieces with a significant size.

Suitable for indoor or outdoor.

Packaging: 25 kg

Consumption: 3,0 kg/sqm on 2mm thickness



tile adhesives

tile adhesive of mixed binders

cecoisflex

Cecoisflex is a high performance (C2), flexible cementitious adhesive (S1) with extended open time (E) and no vertical slip (T) for all kinds of ceramic tiles

It is suitable for laying cladding of marble, granite, big or small stone for indoors and outdoors, for placing ceramic, gres, clay, porcelain, low absorption ceramic, on supports made of plasteboard and also for radiant heating floors.

C2 T E S1 according to UNE-EN 12004

Packaging: 25 kg

Consumption: 3,0 kg/sqm on 2mm thickness



tile adhesives

epoais iny**epoxy adhesive for injections,
two component and
low viscosity**

Epoais Iny is a high fluidity epoxy adhesive, which hardens without retraction and acquires high mechanical strength.

It is used to inject cracks and structural crevices in order to obtain a monolithic piece. Injected fissures should be static. Epoais Iny is also used in the consolidation of microcracks made by concrete retractions.

Can be used in concrete, mortar, stone, steel and wood. Besides paste both sides of the crack, it is also an effective barrier against water leaks that may occur in cracked parts.



Packaging: 1 Kg

Consumption: 1,05 kg for each lt of volume to be filled

epoais 10**bi-component adhesive based
on epoxy resins**

Epoais 10 is an adhesive based on epoxy resins, presented in two parts which are mixed before using. Epoais 10 has a suitable viscosity to allow the application as a paint, in both vertical and horizontal surfaces.

It is used in binding building materials, its most specific application is as a bonding bridge between new concretes and existing concretes.



Packaging: 1,5 kg , 8 kg

Consumption: 2 sqm/kg into concrete union

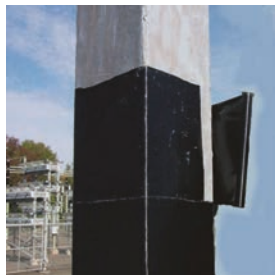
epoxy adhesive for carbon mesh bonding

epoais carbono

Epoais Carbono, is a two component epoxy adhesive with very good strength and special gel-like consistency.

for bonding Tejais Carbono in structural reinforcement systems and Teais Carbo Lam

In structural reinforcement systems, on beams, pillars, and other structures that require reinforcement.



carbon fiber



Packaging: 4,4 kg

Consumption: 0,5 to 0,7 kg/sqm depending on support

bi-component thixotropic adhesive based on epoxy resins

epoais h

Epoais H is an epoxy adhesive presented in two parts which are mixed before using. Its consistency is pasty thixotropic, which allows it to glue pieces together both vertically and horizontally, and provides a certain refill capability.

It is used for bonding cured concrete parts together. Union of metal, marble, natural or synthetic stones, and similar choices. In anchoring of iron, flange plates, to fill cracks.

As repair mortar for small surfaces such as edges or ridges, holes or voids, repair joints and cracks edges.



metals

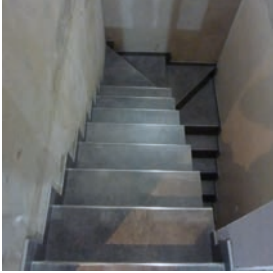


Packaging: 3,54 kg

Consumption: 2,0 kg/sqm according application

cecois epoflex

flexible epoxy adhesive for fixing claddings on non-absorbent supports



Cecois Epoflex is a special adhesive based on Epoxi flexible resins with good thixotropy and very high adherence in many supports.

It is applied for fixing all types of claddings on surfaces where the adherence is low (plastic, ceramic, glass, metals, etc.)

Suitable for indoor and outdoor.



Packaging: 4,4 kg

Consumption: 2,0 to 2,5 kg/sqm according application

colte

coloured adhesive for the placement of tiles and gable ends



Colte is a powder adhesive to mix with water. It is coloured according the most common colours of the tiles on market in order to improve the aesthetic appearance.

The product improves the aesthetics of the installation, perform finishes, the first rows of laying on the edges of chimneys, etc.

The product has water repellent properties which improve the impermeability of the roof.



Packaging: 25 kg

Consumption: 3 to 4 sqm per 25 kg bag

adhesive for laying stone slabs

adhpi

Adhpi is a powder adhesive used for laying stone slabs. It has a higher resistance than cement-base adhesives, quick drying, with improved mechanical resistance and waterproofing properties. Its use reduces the risk of damp patches and efflorescence.

Used as adhesive for elements made of marble and granite, used on floor pavements and vertical supports such as: granite attachments, polished marble attachments, baseboards, plinths, door and window frameworks, rise and fall of stairs, etc.

Adhpi G, allows the installation on brick in greater thickness than a conventional glue
Type C2 T according to UNE-EN 12004.

Packaging: 25 kg

Consumption: 1,5 kg/sqm on 1mm thickness



stones

fast adhesive for marble, granite and stone.

unipis

Unipis is a two-component product based on polyester resin, formulated as a fast setting time to join pieces of marble, granite and stone (natural and artificial). After the two-component blending is done the product becomes in a thixotropic paste easy to apply both in horizontal and vertical.

It is used in construction, repair and restoration of pieces of marble, granite and stone (natural and artificial). Also can be used for small fillings of flooring concrete hollow in terrazzo, slabs, etc because it can be polish achieving high resistance against abrasive wear and high adherence.

Packaging: 1,5 Kg, 8 Kg

Consumption: 8 sqm/Kg



stones

contactis aqua

water contact adhesive



Contactis Aqua is a contact adhesive based on copolymers, special additives and micronized fillers, specially developed for the bonding of light and low absorption elements. Apply with a brush, fine tooth trowel on each side. Allow to dry and press until the adhesive dries.

The product is suitable for surfaces that can be attacked by solvents (polystyrene, foams, plastics, textiles).

Indoor use



Packaging: 4 kg

Consumption: 1sqm/l according to support absorption

lastois bond

one-component elastic adhesive based on polymer.



Lastois Bond is an adhesive based on MS polymer that polymerizes by the action of environmental dampness. Ease of applying and handling. In putty consistence can be applied by spatula.

It is suitable for elastic sticking of wood, parquet, etc.

For the elastic and waterproof sticking on balconies and terraces, old tiles, patios, kitchens, bath-rooms and another surfaces exposed to the weather.



Packaging: 15 kg

Consumption: 1,0 to 2,5 kg/sqm