



· ABIRA ·

WWW.ABIRA.COM.CO



Luisa

“The thing that makes me enjoy my time the most is the people I work with here. The farm manager is very respectful and always attentive if I need anything. I can always count on them.”



Yuley

“When other farms close during the off-season, when we have trouble feeding our families, Abira finds ways to give us a stable job throughout the year.”



·ABIRA·

— *It's Time to Rethink the
Traditional Coffee
Supply Chain* —

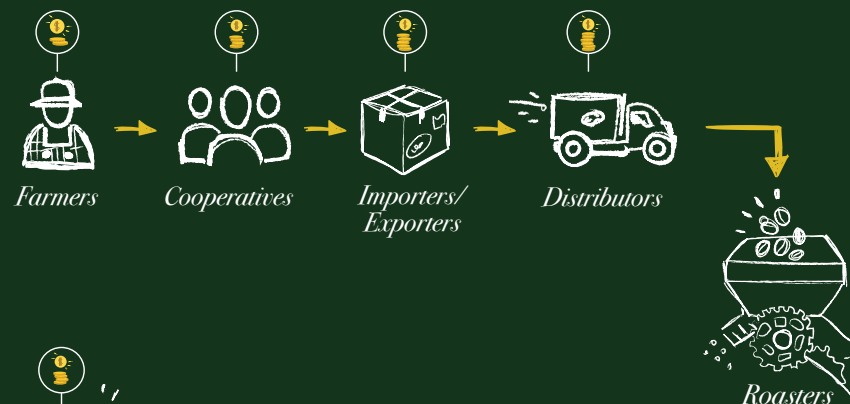
For years, we have witnessed the traditional coffee supply swallow up the profits of local producers with little regard for the damage this behavior has on the community. No longer. Abira was founded upon the concept of supporting small family farms and medium sized producers by breaking the traditional supply chain. It is time to bring our coffee and our neighbors' coffees directly to you.

— WHO WE ARE —

Abira is a proud Colombian coffee producer based in a small town in Antioquia called Salgar. Our mission is simple: to create a supply chain that directly links the coffee farmer to the coffee roaster. Whether they are on the farm, in the lab or in the office, our team is comprised of men and women dedicated to the cultivation, processing and distribution of the finest Colombian coffee.

Our passion for coffee drives us to meticulously control each level of production which allows us to deliver exceptional quality with remarkable consistency. This attention to detail ensures that we provide our roasting partners with a broad portfolio of coffees while providing meaningful impact in our community.

THE TRADITIONAL WAY



THE ABIRA WAY



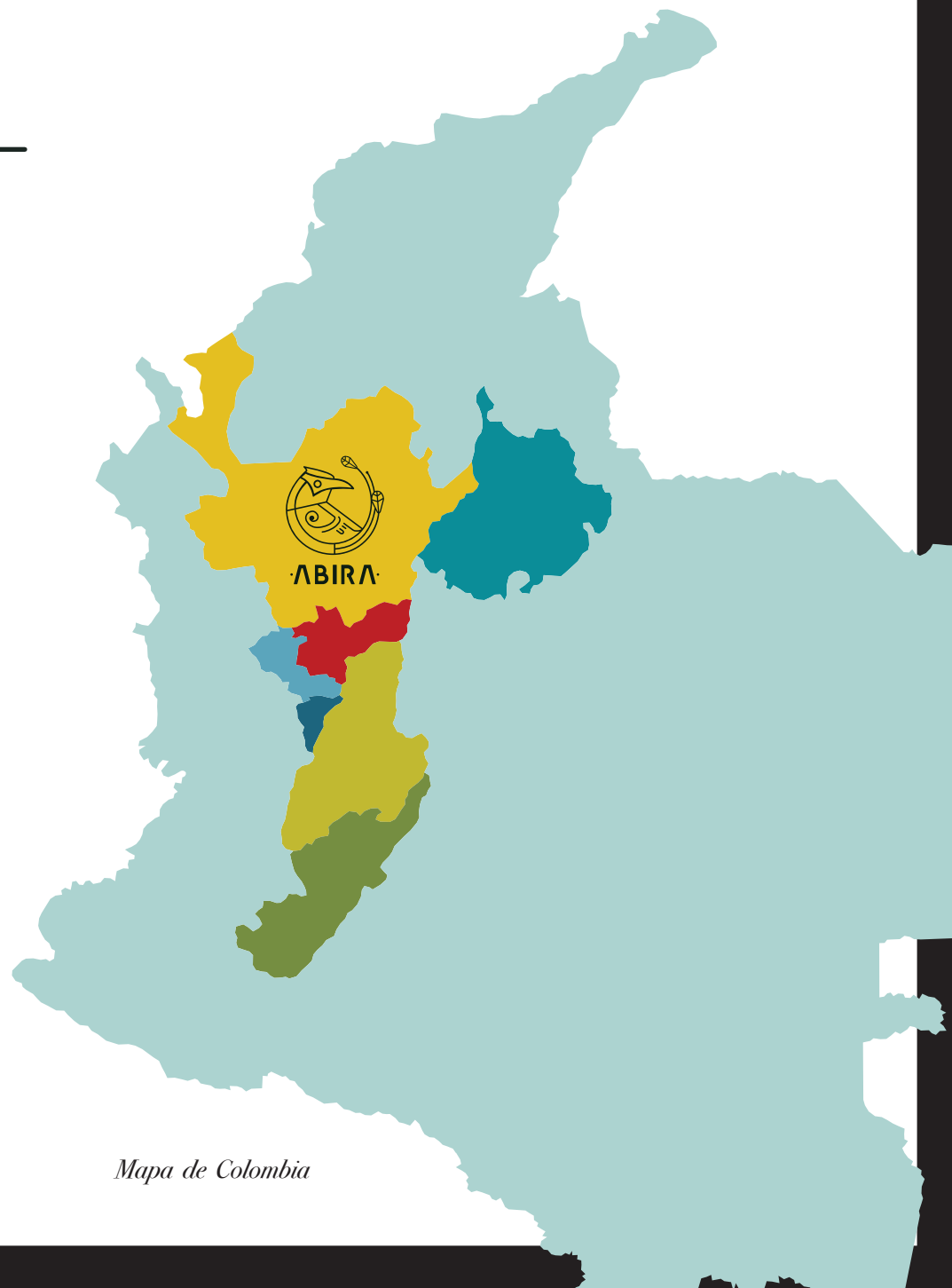
Farmers / Distributors

— OUR SOURCING —

- SANTANDER
- QUINDIO
- ANTIOQUIA
- TOLIMA
- CALDAS
- HUILA
- RISARALDA

*We have personal
relationships with farmers
across Colombia.*

Our dedicated, well-connected sourcing team has the capability to source coffees from all over Colombia. We maintain relationships with a large number of small and medium-sized farmers to ensure that they are appropriately compensated for the coffees they produce.



Mapa de Colombia

SALGAR

Our Home town

The Salgar Region has been a top producer of Colombia's specialty coffee for decades. With their ideal climate conditions, the scenic coffee farms set on misty slopes and nestled within lush foothills produce smooth-bodied brews, infusing a piece of the valley into every cup they fill. Situated between imposing hills lies the small town of Salgar. Founded in 1880, it is home to 9,000 people who are as much a part of the land as the coffee trees cultivated around them.

We maintain numerous relationships with our neighbours to ensure fair trade in the region & retain our ability to source excellent specialty coffees directly from both our farms and the farms around us.



OUR *Farms*



EL LEÓN

LA COLOMBIANA

LA GRECIA



EL LEÓN

Full-time workers: 25

Multi-cropping

Corn / Beans / Plantains

Altitude

1,400 - 1,700 masl

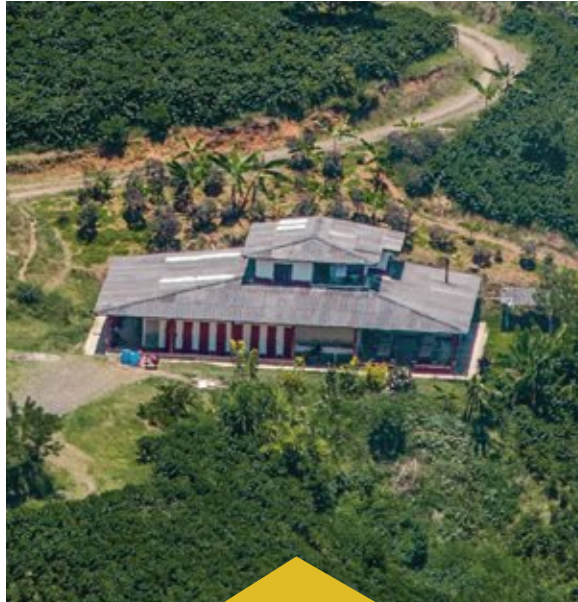
Avg Temperature: 20°

Hectares: 57

Trees planted: 251,237

Types of coffee plants

Castillo / Caturro



LA COLOMBIANA

Full-time workers: 15

Multi-cropping

Corn / Beans / Plantains

Altitude

1,400 - 1,700 masl

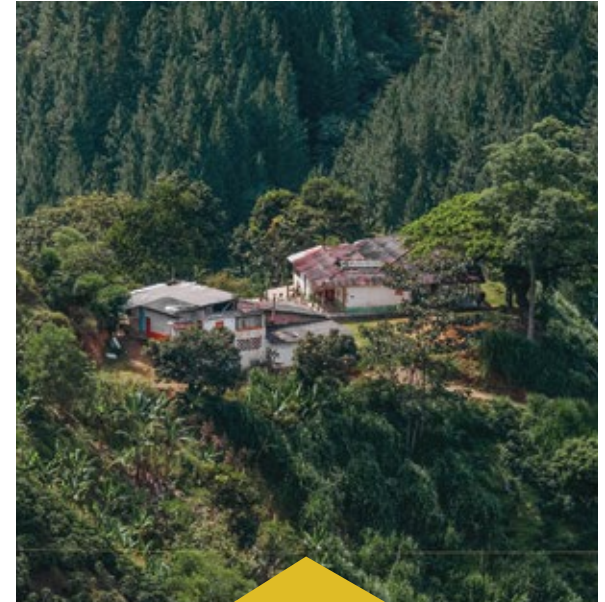
Avg Temperature: 20°

Hectares: 23

Trees planted: 103,800

Types of coffee plants

Castillo / F7 / F8 / Caturro



LA GRECIA

Full-time workers: 45

Multi-cropping

Corn / Beans / Plantains

Altitude

1,250 - 1,850 masl

Avg Temperature: 20°

Hectares: 170

Trees planted: 386,305

Types of coffee plants

Castillo / F7 / F8 / Caturro



·ABIRA·

ABOUT US

Abira Colombia S.A.S.
Calle 30 Norte # 25-40
Salgar, Colombia
sales@abira.com.co



WWW.ABIRA.COM.CO