



REA CONSULT

MANAGEMENT AND CONSULTING FOR SUSTAINABLE INVESTMENTS

WELCOME TO REACONSULT

We are experienced management and consulting experts committed to promoting sustainable international investments. With extensive experience of more than eighteen years, we work closely with investors and entrepreneurs to secure investments through thorough structuring and execution.

GLOBAL TRACK RECORD

Headquartered in Europe and firmly established in South America, REA Consult has a strong track record that spans all continents. Specializing in advising and overseeing the allocation of multi-million-dollar funds in sectors like renewable energy, sustainable industries, and infrastructure, we uphold high governance standards and provide personalized professional services to our clients.

4 GW

of Energy
Projects

\$ 3.5 Billion

of investments

References in

30

countries

Transparency | Reliability | Sustainability

OUR MISSION AND VALUES

REA Consult embodies a change in business culture towards sustainable, responsible investments. Our fundamental principles are in line with global management and consulting standards, advocating for strong risk management and enhanced profitability.

SECTOR ENGAGEMENT



RENEWABLES AND
HYBRID INVESTMENTS

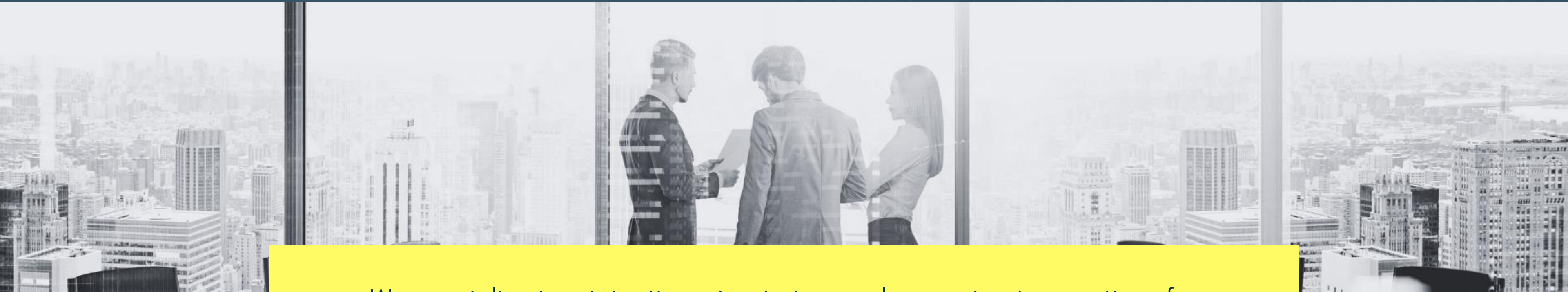
GREEN HYDROGEN



WE ARE PART OF:



OUR SERVICES



We specialize in originating, structuring, and arranging transactions for renewable energy enterprises. With a robust presence in Europe and South America, we stand as a reliable partner in the pursuit of global sustainability. We excel in crafting strategic financial solutions tailored to the unique needs of renewable energy projects.

WE DELIVER

Deal Origination

Valuation and Financial Modelling

Contract Arrangement

Project De-Risking

M&A | LBOs | Transactions

Asset Management Consultancy



REFERENCES

Navigate our list of project references.

SEE PORTFOLIO



MEET OUR FOUNDER

Rachel Andalaft is a forward-thinking finance professional and entrepreneur with over 18 years of leadership experience in the renewable energy and energy transition sectors. Her impressive portfolio amounts to approximately 4 GW of Solar, Wind, Biomass & Hydropower. Rachel has successfully led her own companies for several years, excelling in leadership roles. She is inherently driven and passionate about global sustainability initiatives, taking a key role in strategic business development across Europe and the Americas, and establishing a network of investors and financiers. In 2016, Rachel founded REA Consult; in 2017, she established the REA Treuhand Group, and in 2023, she launched RTS Sun & Savings.

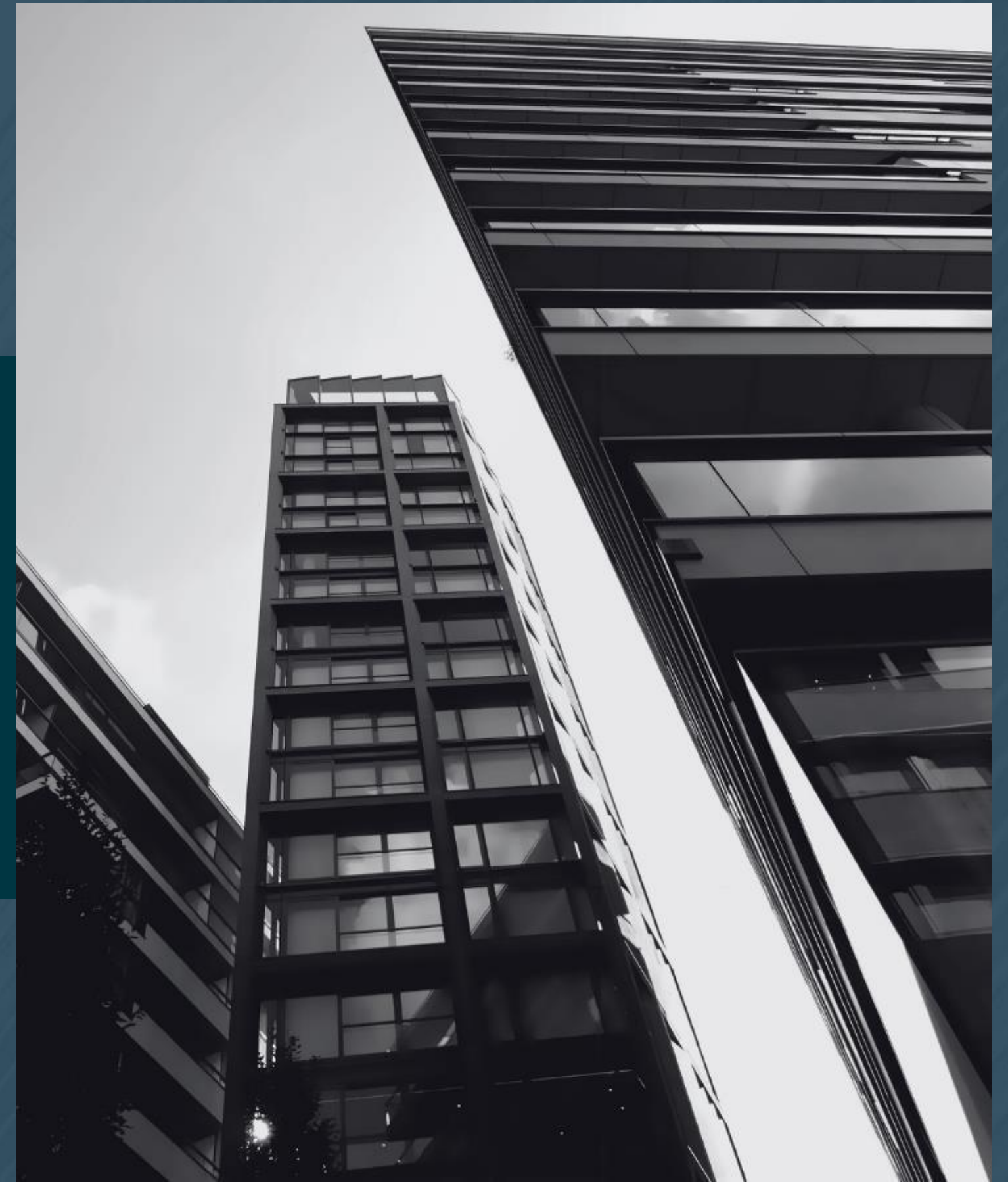


OUR CONTACT

Website : www.rea-consult.com

Email : info@rea-consult.com

We are at home in Cologne, Germany and in Sao Paulo, Brazil



Thank You

