



COMPANY PROFILE & SERVICES



Allcranetec



Allcranetec

Your competitive advantage is directly related to the effectiveness of your personnel.

Allcranetec improves that effectiveness through training and workforce development.

We improve quality and safety through training and engineering, delivering the skills and technology to improve your organization work flow, safely and profitably.

Whether you are working with mobile cranes, overhead cranes, tower cranes, forklifts, aerial platforms or scaffolding, have the need to improve your riggers, operators, inspectors or supervisor's skills.

Working under OSHA, ASME, ANSI or a specially regulated industry performance; Allcranetec will qualify your personnel, extend the service life of your equipment and reduce your exposure to accidents.



Crane accidents and accidental damage cost industry billions each year.

Build reliability into every job with specialized crane operator and inspector training.

Inspections help you meet strict OSHA regulations and will reduce repair costs and unnecessary downtime.

Ensure compliance and extend the life of your valuable equipment.

Hands-on training coupled with performance qualification ensures your personnel are equipped to meet their job challenges.

Training prepares personnel for testing and provides the foundation for crane operation safety.

Crane operation, in the opinion of many is simply an act of pushing a button or pulling a lever.

Don't let these seemingly simple acts deceive you. The skill and judgment necessary require considerable skill.

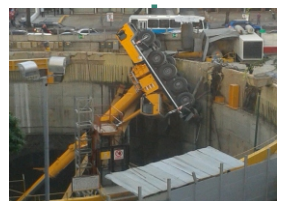
Rigging is one of the most misunderstood and dangerous jobs in industry.

Knowledge of sling stress, components, turning and drifting loads, and other common tasks requires precision and skill.

Allcranetec offers specialized pedestal crane and marine platforms training.

Personnel handling is one of the most critical areas and programs are available on aerial lifts, scaffolding and personnel baskets for operators, users and management.

Allcranetec provides accident investigations, site safety surveys, expert witness testimony, pre-purchase evaluations and equipment application assessments.



Reliability

Allcranetec dedicates thousands of man hours and resources each year to bring

you innovative services which ensure the finest quality services available.

When selecting a training company ask about:

Instructor qualifications

Course manuals

Compliance issues

Site-specific orientation

Computerized presentations

Guaranteed delivery
Years in service

References



contact:

efigeac@allcranetec.com

efigeac@allkrane.com



All too often management relies on word alone regarding the qualifications of equipment operators.

Documentation of operator training may sound insignificant, especially when told “they've been checked out.”

But the consequences of allowing untrained operators on your job-site are costly.

Lost production time, increased costs for damaged equipment, inefficient operations, accidents and noncompliance can cost thousands, if not millions of dollars.



Training improves your work flow, increases profitability and provides safety measures not otherwise available.

How often are you experiencing a “near miss”? Do you wonder why certain jobs take so long to complete? Are you constantly explaining why you are experiencing work delays and added costs?



Allcranetec specializes in material handling training and can provide just the service you need to increase job-site safety and increase profits.

Call on us to help build reliability into your work and profits to your bottom line.

ON-SITE TRAINING



Training At Your Location Programs Immediately Available:

Qualified Signal Person
Qualified Rigger Level I
Qualified Rigger Level II
Qualified Rigger Level III – Director
Mobile Cranes Operator
Boom Trucks Operator
Knuckle Boom Trucks Operator
Pedestal Cranes Operator
– Ship - Mounted Cranes Marine Platforms
Overhead Cranes Operator
Tower Cranes Operator
Forklift Operator
Telescopic Boom Forklift Operator
Aerial Platforms
Inspector courses
OSHA regulations
Mechanics



contact:

efigeac@allcranetec.com
efigeac@allkrane.com

On-site training is our most requested service and your call puts a team into action customizing a program for your exact needs.

Technical training, hands-on training and workshops are each geared to your facility for on-site orientation.

Your organization's equipment, regulatory requirements and your personnel's level of experience become focused elements—each addressed as critical elements of your program.

Whether you are working in construction, manufacturing, transportation, mining, power generation, a marine industry or any of the vast industries utilizing material handling equipment—

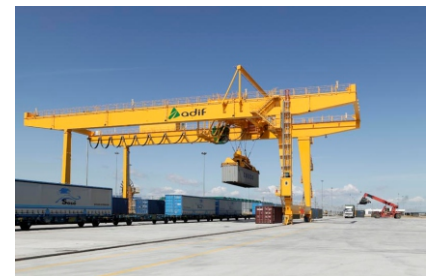
Allcranetec programs will improve safety, increase the skill of your personnel, help add years to the life of your equipment and ensure your continual compliance with regulations.

Allcranetec services don't stop when your training is complete. You can count on toll free, no-charge, technical support for as long as you require.

Exceptional quality training that will serve your company for many years.

All On-Site Programs Include

- Customized Program Content. Site specific training is tailored to your work-site, personnel, job requirements and equipment.
- Hands-on Training. Conducted using your equipment enabling qualification to specific equipment.
- Programs are Confidential. Allowing your personnel to discuss sensitive issues specific to their facility and operations.



Mobile cranes, by their design and commonly adverse operating conditions, present a greater potential for serious injury and property damage than other types of material handling equipment.



The forces involved, effects of weather, dynamics, manufacturers' limitations, difficult to interpret load charts—which publicize capacities within a small percentage of tipping or structural failure, combine to allow only a small margin of error.

A few miscalculations can rapidly eliminate this safety margin.

Help your personnel gain the necessary skills to eliminate guesswork, accidents and work stoppage.

Personnel work with renewed confidence after completing these courses, building reliability into every job.



Major Course Topics

- Crane Failures and Accident Avoidance
- Regulations and Compliance
- Use of Load Rating Charts
- Proper Crane Set-Up
- Structural and Stability Limitations
- Load Handling
- Pick and Carry Operations
- Jibs and Extensions
- Hand Signals and Communications
- Pre-Operational Inspections
- Complex/Critical Lifts
- Inspection, Testing and Certification



Training Available For

- Power plants
- Steel mills
- Manufacturing
- Processing industries
- Wood and Pulp Mills
- Industrial and Maritime
- Overhead Bridge Cranes
- Hoists and Gantries

**All training
complies with
OSHA and ASME**



contact:

efigeac@allcranetec.com
efigeac@allkrane.com



More than pushing a button or pulling a lever, the responsibilities of safe operation and competent inspection may only be correctly performed through proper instruction and hands-on training.

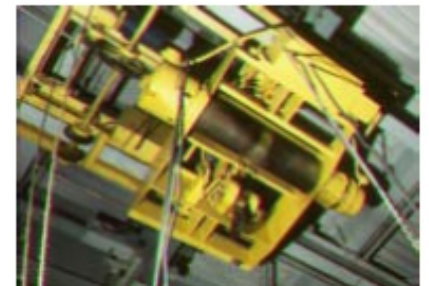
Allcranetec instructors have years of practical, on-the-job, experience and are prepared to ensure your personnel's competency and boost your bottom line

Training eliminates poor load handling techniques and needless damage to equipment.

Operators and inspectors learn proven safety measures that provides the knowledge and skill required to become a positive influence over safety.

Competent operators and inspectors are capable of recognizing mechanical, electrical and hoisting conditions that may result in equipment damage or loss of load.

Training provides immediate and measurable results, and meets OSHA and ASME qualification requirements.



Major Course Topics

- Safe Operating Techniques
- Recognition of Deficiencies
- Load Handling and Load Control
- Pre-use, Monthly and Annual Inspections
- Operator and Inspector Qualification
- Application of OSHA and ASME Standards
- Wire Rope: Types, Application & Inspection
- High Strength Structural Bolted Connections
- Rigging Gear Inspection & Certification
- Documentation of Equipment Condition



Courses Immediately Available

- Basic Rigging Skills
- Craft & Trades Rigging
- Applied Rigging
- Practices
- Advanced Rigging
- Rigging Inspector Certification.

Allcranetec provides complex lift plan programs to help your personnel learn the details of planning complex single and multi-crane lifts.



contact:

efigeac@allcranetec.com
efigeac@allkrane.com



Riggers who have not had the advantage of qualified training have difficulties with rigging concepts and calculating the forces involved.

Mistakes become accidents, and lives become at risk, because many riggers cannot solve what seems an insurmountable problem.

Guesswork becomes the norm, and the entire job-site becomes at risk.

There's little doubt that proper rigging techniques, and sound personal judgment, are deciding factors in reduced rigging accidents.

But, the process of learning the rigging trade has historically been an informal procedure, handed down—decades out of date.

Allcranetec rigging programs simplify the concepts and mathematics of this complex subject.

Personnel begin working safely, as solutions are found, and previously unknown forces are considered.

Give your personnel the training they require to work smarter using simplified, practical methods.

Personnel working in all trades are called upon to rig loads, and to play a part in "below-the-hook" safety.

Enhanced technical skills and practical knowledge combine to provide safety, confidence and productivity

Major Course Topics

- Selection of Gear
- Multiple Leg Slings
- Regulations and Compliance
- Effects of Dynamics
- Sling Angle Stress
- Center of Gravity
- Rigging Charts & Ratings
- Safe Operating Practices
- Inspection & Testing
- Use of Chain Falls
- Synthetic, Wire & Chain Slings
- Crane Considerations



Major Course Topics:

- Boom Trucks types
- Parts & Components
- General Stability &
- Rear Stability
- Structural Competence
- Load Rated Charts
- Boom Trucks Operation
- Knuckle Boom Trucks
- Operation
- Boom Trucks Inspection
- Wire rope inspection
- Safety Practices
- OSHA 1910.180

Train your personal to know distinct types of cranes that can be used in your site work and know required features for a good performance en each type of operation.

Boom trucks usefulness and travel capacity, makes them essential in work sites.

Boom Trucks and Knuckle Boom Trucks Operator Training are designed to improve knowledge and skills of your operators, trainees, security personal, inspectors, maintenance personal, managers and supervisors.

Given information in classroom is complemented in hands-on training with boom trucks.

Every person assisting to our programs are going to have important skills for good operational practices, with a better technical comprehension, safe operating rules, requirements application and operator's responsibilities (in accordance with standards).



contact:

efigeac@allcranetec.com

efigeac@allkrane.com

Aerial Lift standards require that your personnel meet strict OSHA requirements 1910.67(c)(2)(ii) "Only trained persons shall operate an aerial lift."

Allcranetec's Operator and Trainer's course provides instruction necessary to avoid accidents and equipment failures. Participants learn practical methods to ensure safety and equipment reliability.



Major Course Topics

- | | |
|---|---|
| <ul style="list-style-type: none">• Operation Safety• Manual Controls• Fall Protection• Inspection & Testing• Brake Systems & Operation• Failures & Accident Avoidance | <ul style="list-style-type: none">• Control Features• Boarding & Exiting• Safety Precautions• OSHA/ASME Compliance• Qualifying Operators• Emergency Controls |
|---|---|

Forklift training covers the counterbalance, telescopic boom and narrow aisle reach trucks.

New OSHA training requirements under 29 CFR Part 1910.178 place stringent new requirements for initial training, refresher training, operator testing and performance evaluations.



Major Course Topics

- | | |
|--|--|
| <ul style="list-style-type: none">• Operator Qualification & Certification• Stability Triangle• Principles of a Fork Lift• Load Handling Techniques• Proper Fueling (Diesel, LPG, Gasoline)• Travel, Transit & Shutdown | <ul style="list-style-type: none">• Load Bearing Components• Recordkeeping requirements• Safe Operation• OSHA/ASME Compliance• Performance Evaluations• Inspection Requirements |
|--|--|

Competent Scaffold Builders learn proper methods of construction, bracing and ground support ensuring safe use, erection and dismantling.

Meet OSHA training requirements and help your workforce complete their jobs safely and on-time helping keep you on schedule and budget.

Major Course Topics



- | | |
|---|---|
| <ul style="list-style-type: none">• Erection/Dismantling Standards• Erection/Dismantling Standards Mud Sills & Ground Support• Ladders and Scaffold Access Scaffold Boards & Planking | <ul style="list-style-type: none">• Tagging Methods• Fall Protection• Builder and User Safety• OSHA/ASME Compliance Component Inspection |
|---|---|

PEDESTAL CRANES – SHIP-MOUNTED CRANES- MARINE PLATFORMS



Allcranetec's Training Program put emphasis in accident prevention through safe work practices and procedure.

Whether if you operate pedestal cranes, ship-mounted cranes or marine platforms, you are always exposed to accidents.

Capacitation is made in efficient short sessions, given necessary technological knowledge and required personnel skills to prevent accidents and work in an efficient way.

This approved training give correct instructions at the same time trained personnel learn many skills.



Security Training Video **Inspection reports (dairy, monthly & annual)**

- Mobile Cranes
- Overhead Cranes
- Boom Trucks
- Wire rope
- Slings & Rigging Hardware
- Forklift Truck
- Aerial Platforms
- Scaffold

Laminated Wallet Cards

Rigger's Reference

- Rigging Hardware Inspection
- Mobile Cranes Inspection
- Mobile Cranes Hand Signals
- Overhead Cranes Hand Signals

Hand Signals Chart (Decals available)

Inspector Tool Kit

Equip models for training

Safety Meeting Compliance at Door Emergency

CRANE INSPECTION & CERTIFICATION



Accredited Inspection Service Our Inspectors Will

- Provide a comprehensive inspection.
- Conduct operational testing.
- Provide load testing service.
- Issue professional detailed reports.
- Provide a documentation folder containing reports and certifications.
- Provide after inspection service to help you maintain compliance.

What You Will Receive

- Crane Condition Report
- Recommendations Report.
- Certification Documents.
- Certification Decal.
- Wire Rope Reports.
- Monthly Inspection Forms.
- Daily Inspection Forms.
- Nondestructive Test Report.



contact:

efigeac@allcranetec.com
efigeac@allkrane.com

Compliance with OSHA regulations requires accurate verification of crane safety in all operating environments.

Allcranetec is a recognized private agency accredited for the inspection and certification of cranes.

Cranes not regulated by Maritime or specific state laws are inspected in accordance with applicable standards.



You receive an objective and comprehensive inspection.

Whether your cranes are working in Maritime, General Industry, or Construction this valuable service provides the assurance you require for safety and compliance.

Allcranetec's inspection procedure is the most detailed in the industry.

You can rest assured findings are not inflated to sell additional services or parts you may not need.



Allcranetec's inspection service, eliminates the conflict of interest common with companies who inspect and repair cranes.

You receive a thorough evaluation of your equipment from an unbiased inspector.

Inspections include all forms, reports and certifications to verify your equipment's condition.

To assist your continual compliance efforts, you also receive daily and monthly inspection reports

Performance

Helping you maintain a highly qualified professional crew is our primary focus.

Allcranetec's competency based training methods, performance qualification testing, and continuing education services ensures that your personnel are ready to meet their assigned tasks.

Allcranetec's Training Center is a modern, state-of-the-art, facility designed to provide the most valuable learning environment available.

Equipped with computerized projection equipment, digital projection cameras, and advanced audiovisual equipment, participants learn the skills of their trade in a comfortable workshop environment.



Hundreds of hardware sample and working cranes enables training that 'hits the mark', ensuring your personnel have every advantage to build their professional skills and knowledge.



Open Enrollment Seminars are regularly conducted at the Training Center covering subjects of; Mobile Crane Operation and Inspection, Overhead Cranes, Rigging, Safety Management, Scaffold Building and Train-the-Trainer courses in Forklifts and Aerial Lifts.

See why so many turn our Training Center for their material handling training.

Course offerings are listed under
"Open Enrollment Seminars."

Programs Meet OSHA and ASME
Training Requirements!



contact:

efigeac@allcranetec.com

efigeac@allkrane.com

OPEN ENROLLMENT SEMINARS

Seminars

- Mobile Cranes & Rigging
- Applied Rigging Practices
- Overhead Cranes, Hoists & Rigging
- Mobile Crane Inspector
- Safety Management
- Aerial Lift Safety
- Forklift Safety

Train-the-Trainer Courses

- Any course may include Train the Trainer.

How To Register For Courses

Call to our contacts and ask to speak with our Registrar.

We will send you a complete enrollment package, course outline and travel information.

You can also apply to our courses on-line



contact:

efigeac@allcranetec.com
efigeac@allkrane.com



Seminar training upgrades your technical expertise and enhances your safety awareness.

Whether you have years of experience, or are new to the material handling field, these programs provide a foundation for the concepts essential to understanding the dynamics and complexities of modern material handling equipment.

Learn how common mistakes and misconceptions affect safe operations; why so many authorities point out that the absence of accidents is not a good indicator for job-site safety or proper equipment utilization.

Allcranetec seminars are offered on a variety of equipment types at our Tampa Training Center—a modern state of the art training facility. Students gain valuable technical information and participate in hands-on training during each course.



Programs include OSHA and ASME requirements, presented in a comfortable workshop format, where participants learn from instructors with years of practical experience.

Our instructors relate to your operations, providing solutions to your material handling requirements.

Who Should Attend

- Equipment Operators
- Safety & Loss Control
- Inspectors
- Test Personnel
- Industrial Engineers
- Maintenance Personnel
- Management and Field Supervision
- Training Personnel



Para una programación de entrenamiento llama:

Capacitation and Services

www.allcranetec.com efigeac@allcranetec.com

Crane sales & rental

www.allkrane.com efigeac@allkrane.com



We provide 100% training in Spanish with all the following courses:

TRAINING

- Qualified Signal Person
- Qualified Rigger Level I
- Qualified Rigger Level II
- Qualified Rigger Level III. Director
- Mobile Cranes Operator
- Boom Truck Operator
- Knuckle Boom Truck Operator
- Pedestal Cranes, Marine Platforms, Shipyard Operator
- Overhead Cranes Operator
- Tower Cranes Operator
- Forklift Operator
- Telescopic Boom Forklift Operator
- Aerial Platforms Operator
- Inspector Courses
- OSHA Regulations
- Earth Moving Equipment
- Mechanics Skills

SERVICES

- Deficiency Analysis
- Writing Procedures
- Accident Investigation
- Skills Development
- Personalized Program Development adapted to your requirements
- Training in your Company
- Qualifying your Company
- Operator Certification
- Operator Training
- Rigger Certification
- Rigger Training
- Training in our installations
- Training Seminars
- Business Consulting
- Evaluation Analysis
- Personnel Management
- Online Courses

We offer Industrial & Occupational Safety Training Courses:

APEC Courses

- Basic/10
- Basic Orientation
- SafeLand
- SafeGulf
- Anti-terrorism
- HS2 Course
- GHS/JSA Course
- Basic Intro to Pipeline

Training Centers:

USA · Mexico · Central America · Panamá · Colombia · Caribbean

Allcranetec - USA
Hwy 10
Katy, TX 77949
1 713 893 8181
1 713 589 4800

Allcranetec - Mexico
Mariano Otero
Guadalajara Jalisco
Mexico cp 45600
52 338 421 3000

Allcranetec - Panamá
World Trade Center Panamá
Corregimiento Bellavista,
Cd. De Panamá C.P. 0832
507 6977 7007 - 6977 6500

Allcranetec - Colombia
Avenida El Dorado
Aeropuerto el Dorado
Bogota, Colombia.
57 313 251 0627

ACTITI
Allcranetec International
Training Institute

Allcranetec - El Salvador. C.A.
Whatsapp +503 7472 7233 - 6106 8181

www.allcranetec.com www.allkrane.com
efigeac@allcranetec.com efigeac@allkrane.com
Facebook: Allcranetec – Allkrane Gruas
Skype: allcranetec - allkrane

APEC
SAFETY